

UNITED STATES  
DEPARTMENT OF THE INTERIOR  
GEOLOGICAL SURVEY

APPLICATION FOR PERMIT TO DRILL, DEEPEN, OR PLUG BACK

1a. TYPE OF WORK

DRILL ☒

DEEPEN ☐

PLUG BACK ☐

b. TYPE OF WELL

OIL  
WELL ☒

GAS  
WELL ☐

OTHER

SINGLE  
ZONE ☒

MULTIPLE  
ZONE ☐

2. NAME OF OPERATOR

TEXACO INC.

3. ADDRESS OF OPERATOR

P. O. BOX 3109, MIDLAND, TEXAS 79701

4. LOCATION OF WELL (Report location clearly and in accordance with any State requirements.)\*  
At surface

1980' FS&WL, Section 34, T-24-S, R-32-E

At proposed prod. zone

14. DISTANCE IN MILES AND DIRECTION FROM NEAREST TOWN OR POST OFFICE\*

21 miles Southeast of Malaga, New Mexico

15. DISTANCE FROM PROPOSED\*

LOCATION TO NEAREST  
PROPERTY OR LEASE LINE, FT.  
(Also to nearest drlg. unit line, if any)

3300'

16. NO. OF ACRES IN LEASE

35,146.30

17. NO. OF ACRES ASSIGNED  
TO THIS WELL

40

18. DISTANCE FROM PROPOSED LOCATION\*

TO NEAREST WELL, DRILLING COMPLETED,  
OR APPLIED FOR, ON THIS LEASE, FT.

9500'

19. PROPOSED DEPTH

4950'

20. ROTARY OR CABLE TOOLS

Rotary

21. ELEVATIONS (Show whether DF, RT, GR, etc.)

Not available

22. APPROX. DATE WORK WILL START\*

At once

23.

PROPOSED CASING AND CEMENTING PROGRAM

SIZE OF HOLE	SIZE OF CASING	WEIGHT PER FOOT	SETTING DEPTH	QUANTITY OF CEMENT
9 7/8"	7 5/8"	24#, 15.28#	425'	*250 sx - 300% to circ.
6 3/4"	4 1/2"	9.5#	4950'	*200 sx - 300% to tie-back to evaporate section

\*Cement w/250 sx Class "C" w/1% CaChl. (300% to circ). Cement must circ.

\*\*Cement w/200 sx Class "C" w/10#/sk salt, 14.8#/gal (300% to tie-back to evaporate section).  
Not necessary for cement to circ.

COMPLETION PROGRAM

1. Perf 2 JSPI.
2. Treat w/500 gals 15% N.E. acid.
3. Swab test.
4. Frac w/2,000 gals refined oil & 2,000# sand.

FORMATION TOPS EXPECTED

Dewey Lake	420'	Salado	1169'	Lamar Ls.	4735'
Rustler	836'	Castile	3135'	Delaware Sd.	4755'
				Total Depth	4950'

IN ABOVE SPACE DESCRIBE PROPOSED PROGRAM: If proposal is to deepen or plug back, give data on present productive zone and proposed new productive zone. If proposal is to drill or deepen directionally, give pertinent data on subsurface locations and measured and true vertical depths. Give blowout preventer program, if any.

24.

SIGNED

*J. J. Velten*

TITLE

Division Civil Engineer

DATE

10/18/67

(This space for Federal or State office use)

PERMIT NO.

APPROVED BY

CONDITIONS OF APPROVAL, IF ANY:

TITLE

APPROVED  
OCT 19 1967  
A. R. BROWN  
DISTRICT ENGINEER

DATE

NEW MEXICO OIL CONSERVATION COMMISSION  
WELL LOCATION AND ACREAGE DEDICATION PLAT

Form C-102  
Supersedes C-128  
Effective 1-1-65

All distances must be from the outer boundaries of the Section.

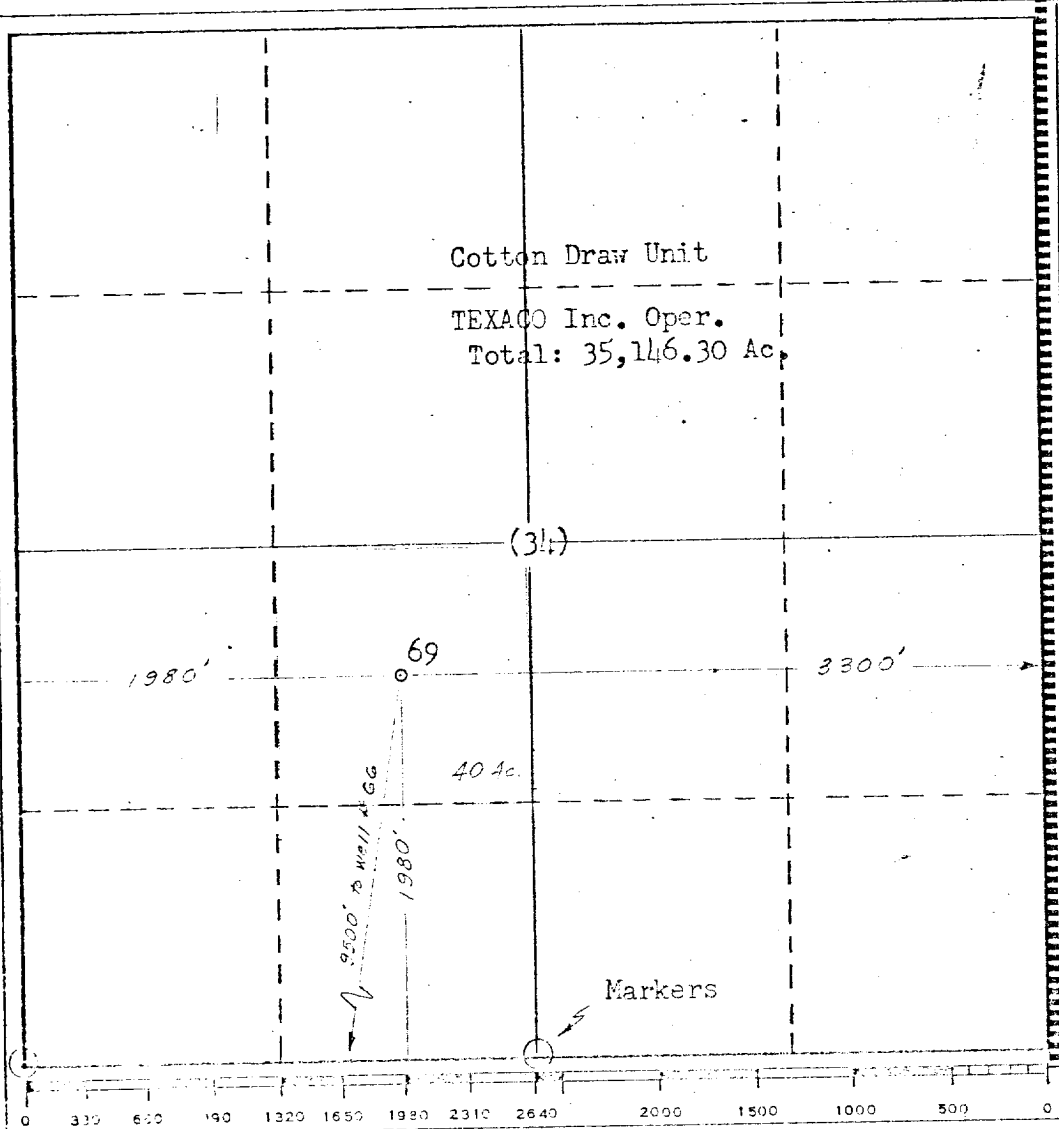
Operator <b>TEXACO Inc.</b>		Lease <b>Cotton Draw Unit</b>		Well No. <b>69</b>
Unit Letter <b>K</b>	Section <b>34</b>	Township <b>24 South</b>	Range <b>32 East</b>	County <b>Lea</b>
Actual Footage Location of Well: <b>1980</b> feet from the <b>South</b> line and <b>1980</b> feet from the <b>West</b> line <b>Sec. 34</b>				
Ground Level Elev. <b>Not Available</b>	Producing Formation <b>Delaware Sand</b>	Pool <b>Wildcat</b>	Dedicated Acreage: <b>40</b> Acres	

- Outline the acreage dedicated to the subject well by colored pencil or hachure marks on the plat below.
- If more than one lease is dedicated to the well, outline each and identify the ownership thereof (both as to working interest and royalty).
- If more than one lease of different ownership is dedicated to the well, have the interests of all owners been consolidated by communitization, unitization, force-pooling, etc?

☒ Yes ☐ No If answer is "yes," type of consolidation Unitization & Development Agreement

If answer is "no," list the owners and tract descriptions which have actually been consolidated. (Use reverse side of this form if necessary.)

No allowable will be assigned to the well until all interests have been consolidated (by communitization, unitization, forced-pooling, or otherwise) or until a non-standard unit, eliminating such interests, has been approved by the Commission.



CERTIFICATION	
I hereby certify that the information contained herein is true and complete to the best of my knowledge and belief.	
Name	<b>J. J. Velten</b>
Position	<b>Division Civil Engineer</b>
Company	<b>TEXACO Inc.</b>
Date	<b>10/18/67</b>
I hereby certify that the well location shown on this plat was plotted from field notes of actual surveys made by me or under my supervision, and that the same is true and correct to the best of my knowledge and belief.	
Date Surveyed	<b>10/17/67</b>
Registered Professional Engineer and/or Land Surveyor	<b>J. J. Velten</b>
Certificate No.	<b>8174</b>