

NEW MEXICO OIL CONSERVATION COMMISSION
SOUTHEAST NEW MEXICO PACKER LEAKAGE TEST

Operator Solar Oil Company, _____				Lease Travis		Well No. 2	
Location of Well	Unit J	Sec 21	Twp 23-S	Rge 37-E	County Lea		
	Name of Reservoir or Pool		Type of Prod (Oil or Gas)	Method of Prod Flow, Art Lift	Prod. Medium (Tbg or Csg)	Choke Size	
Upper Compl	Blinebry		Oil	Flow	tbg.	15/64"	
Lower Compl	Tubbs		Oil	Flow	tbg.	28/64"	

FLOW TEST NO. 1

Both zones shut-in at (hour, date): 3-8-68 - 6:00 AM

	Upper Completion	Lower Completion
Well opened at (hour, date): 3-9-68 - 6:00 AM		
Indicate by (X) the zone producing.....	X	
Pressure at beginning of test.....	750	1420
Stabilized? (Yes or No).....	Yes	Yes
Maximum pressure during test.....	750	1420
Minimum pressure during test.....	750	1420
Pressure at conclusion of test.....	750	1420
Pressure change during test (Maximum minus Minimum).....	0	0
Was pressure change an increase or a decrease?.....	n/a	n/a
Well closed at (hour, date): 3-9-68 - 6:00 AM	Total Time On Production 24 hrs.	
Oil Production	Gas Production	
During Test: 165 bbls; Grav. 40.2 ; During Test 432 MCF/Day MCF; GOR 2618		

Remarks _____

FLOW TEST NO. 2

Well opened at (hour, date): 6:00 AM - 3-20-68	Upper Completion	Lower Completion
Indicate by (X) the zone producing.....		X
Pressure at beginning of test.....	1075	1750
Stabilized? (Yes or No).....	Yes	Yes
Maximum pressure during test.....	1210	1750
Minimum pressure during test.....	1075	350
Pressure at conclusion of test.....	1210	350
Pressure change during test (Maximum minus Minimum).....	135	1400
Was pressure change an increase or a decrease?.....	Increase	Decrease
Well closed at (hour, date) 3-21-68 - 6:00 AM	Total time on Production 24 hrs.	
Oil Production	Gas Production	
During Test: 36 bbls; Grav. 39.6 ; During Test n/a MCF; GOR n/a		

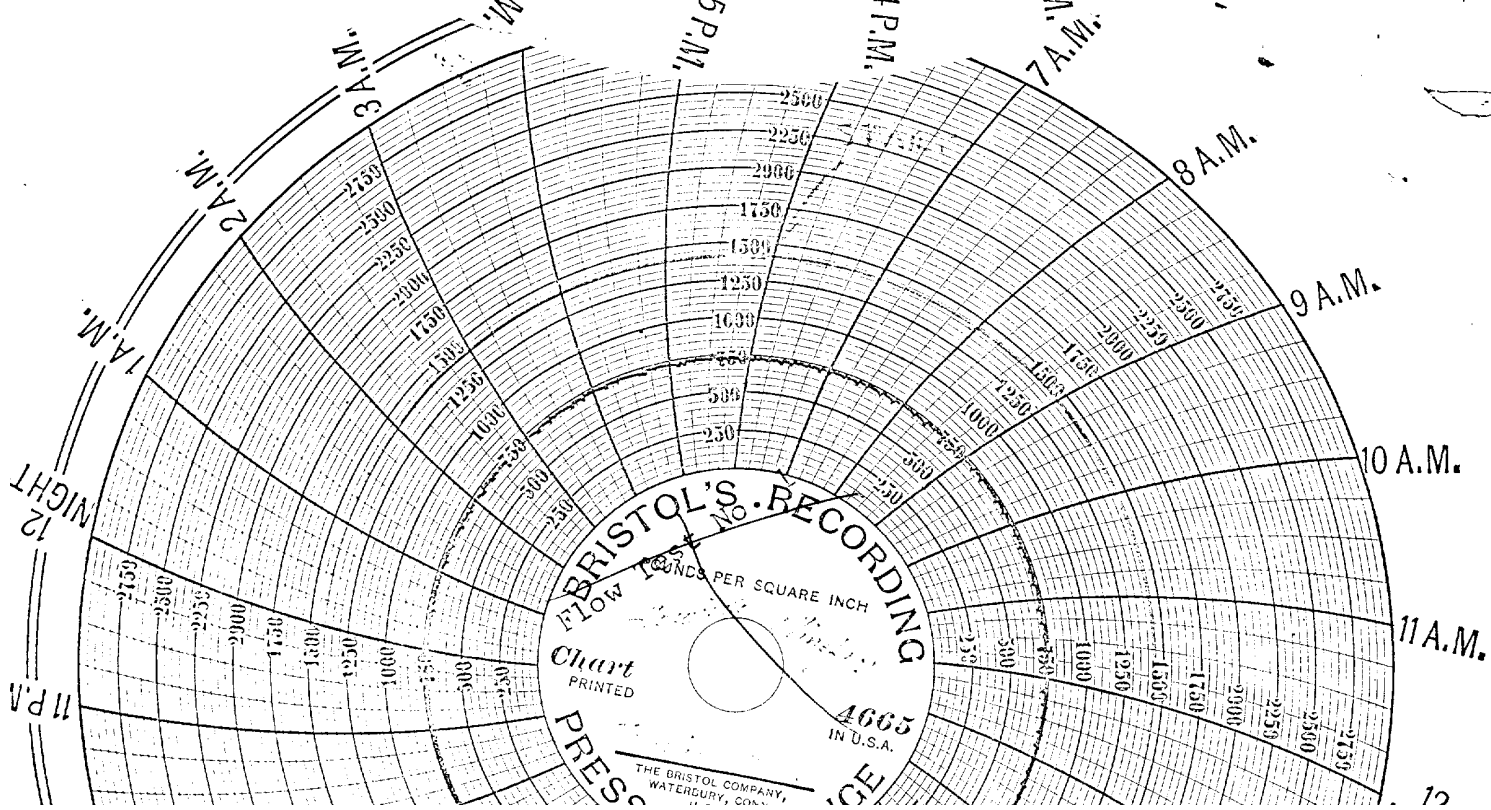
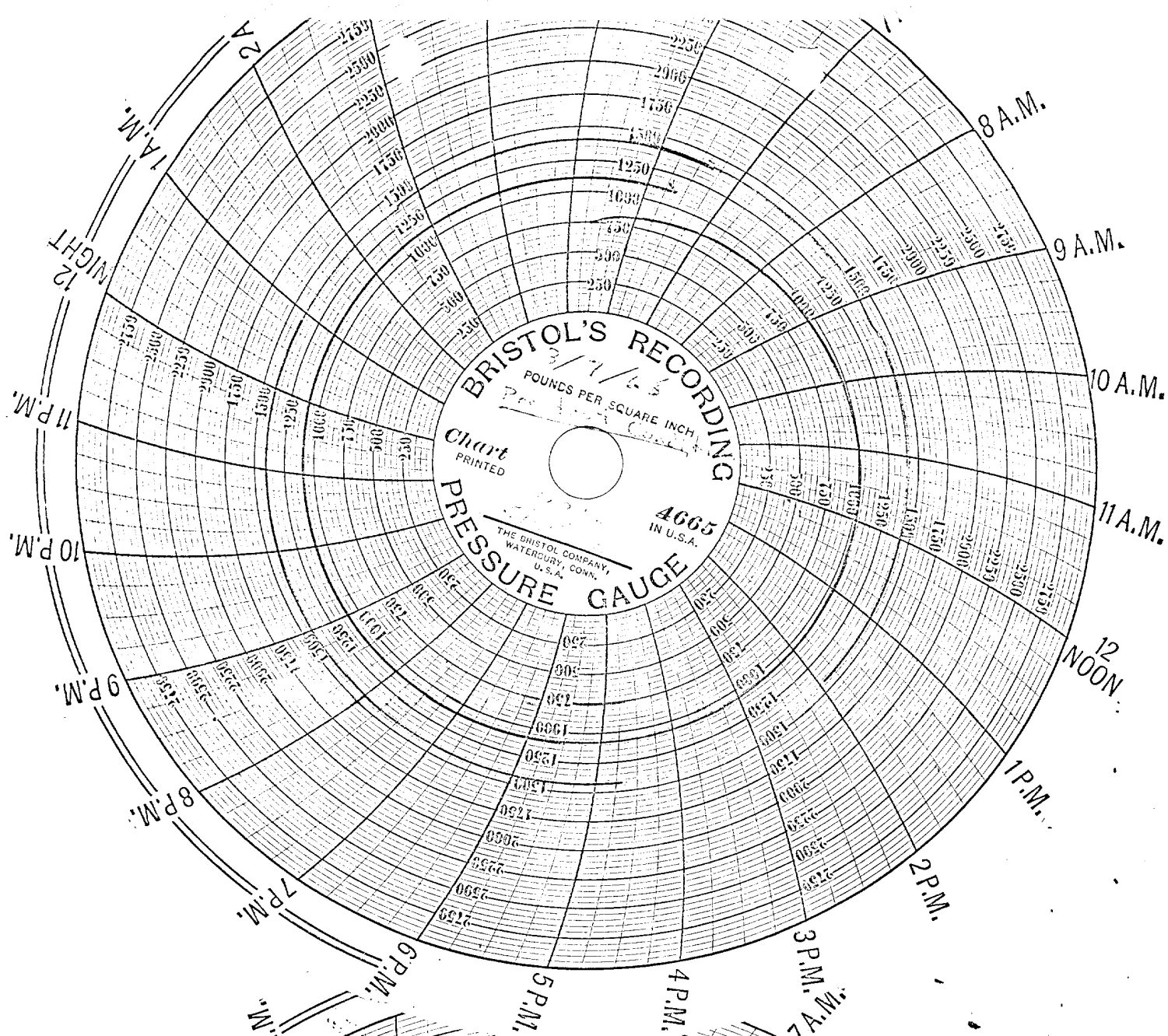
Remarks _____

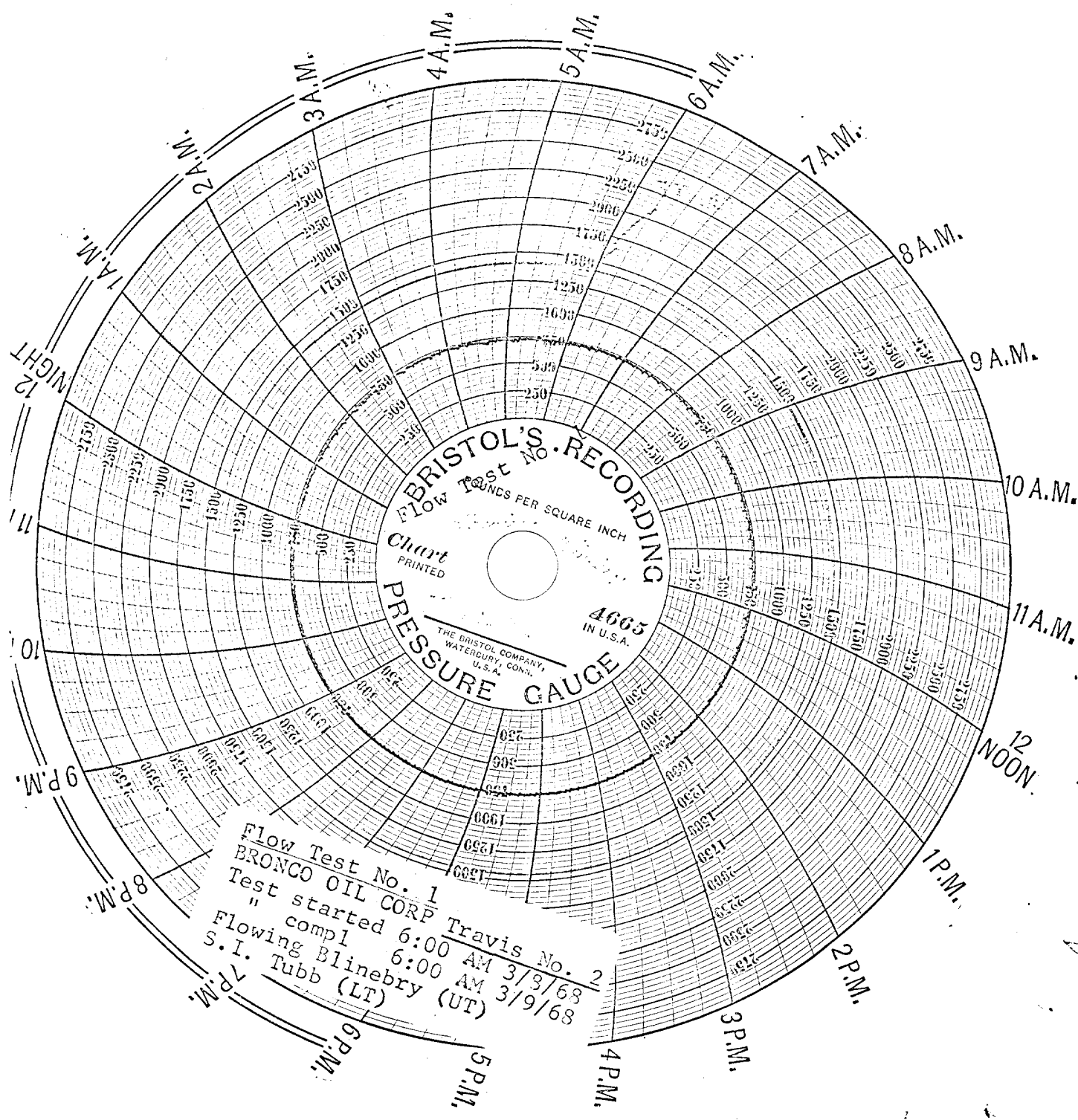
I hereby certify that the information herein contained is true and complete to the best of my knowledge.

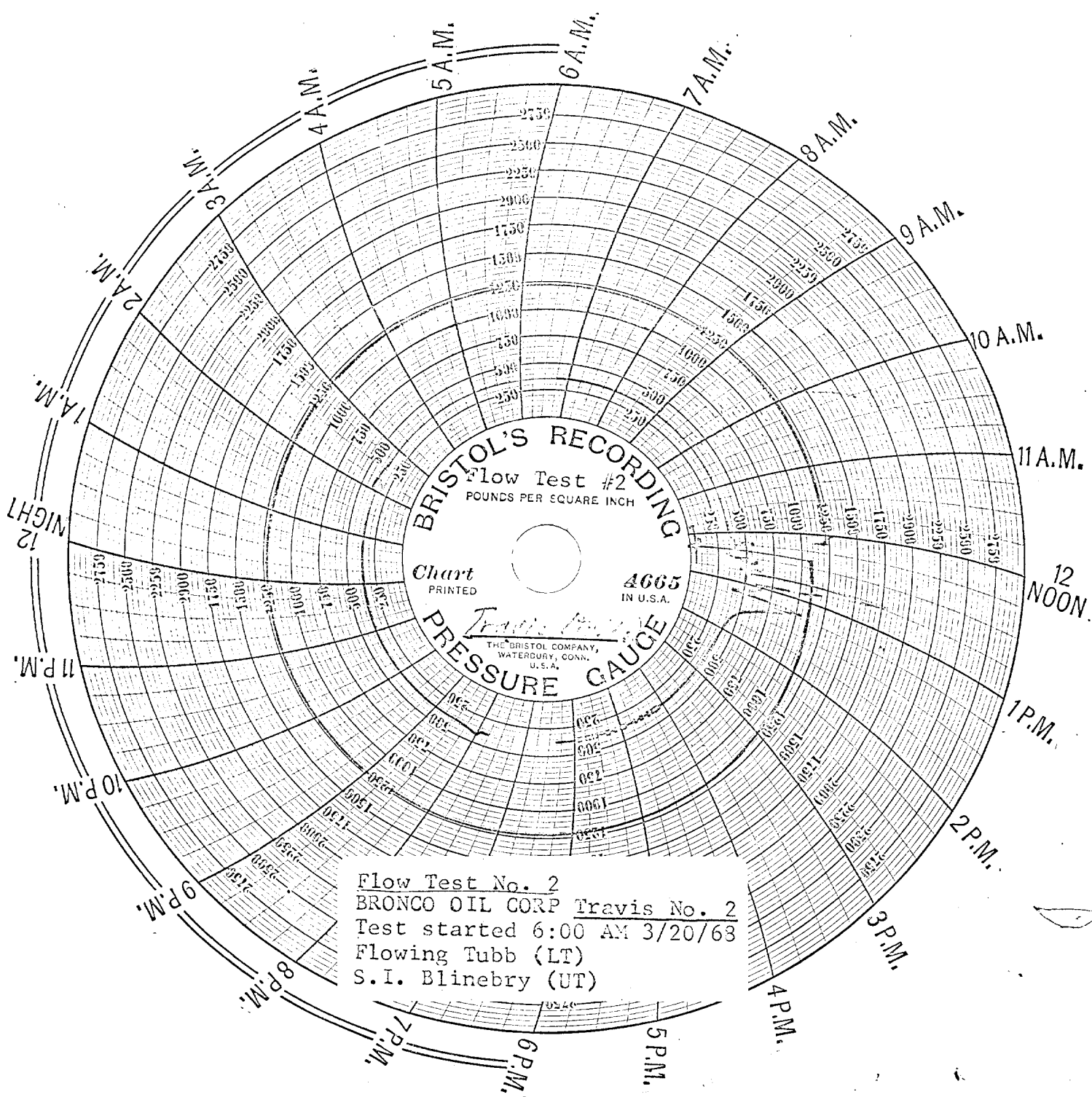
Approved _____ 19 _____
New Mexico Oil Conservation Commission

Operator _____ Solar Oil Company
By D. H. O'Quinn
Title _____ Vice President

By [Signature]

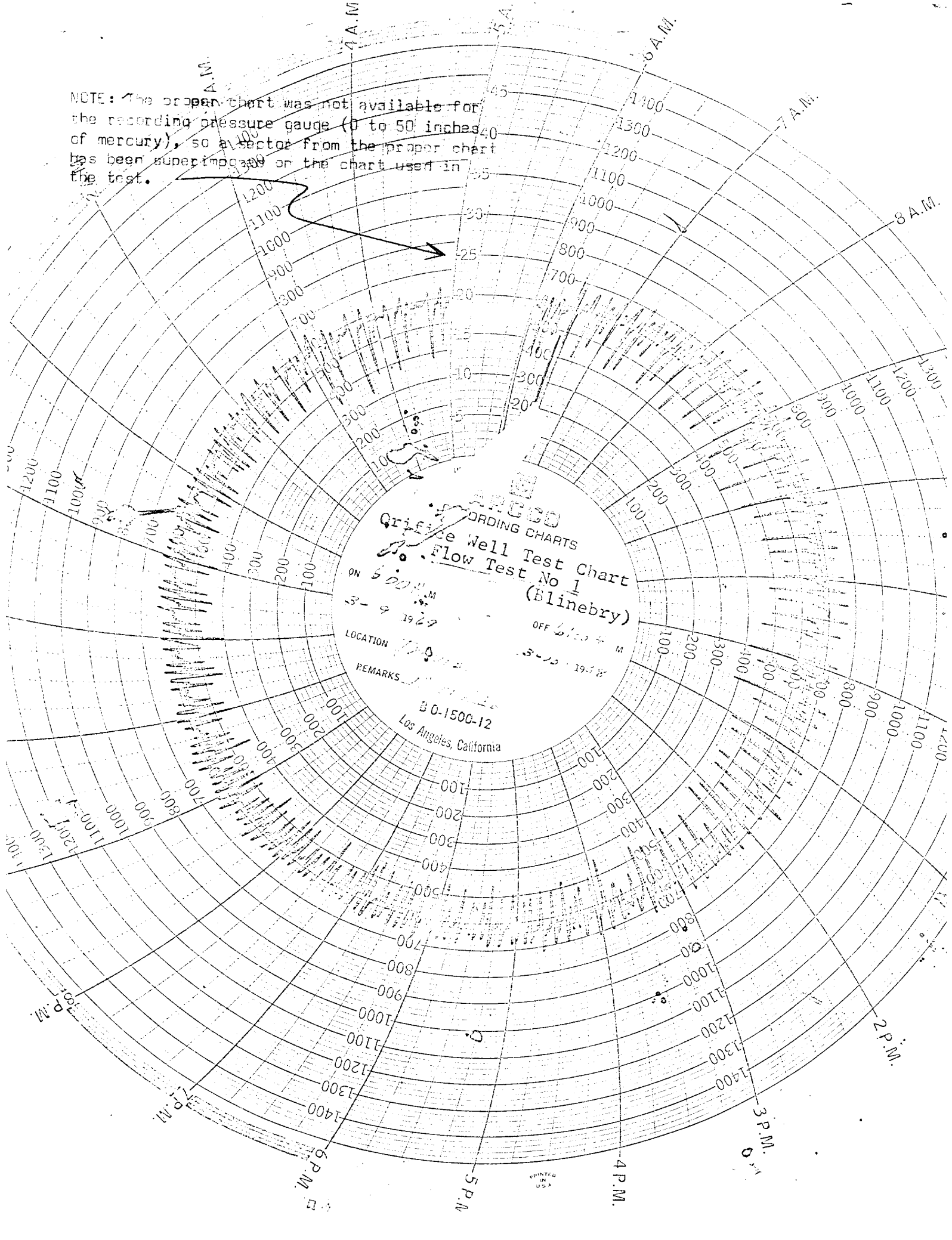






Flow Test No. 2
BRONCO OIL CORP Travis No. 2
Test started 6:00 AM 3/20/68
Flowing Tubb (LT)
S.I. Blinebry (UT)

NOTE: The proper chart was not available for the recording pressure gauge (0 to 50 inches of mercury), so a sector from the proper chart has been superimposed on the chart used in the test.



RECORDING CHARTS
Griffith Well Test Chart
Flow Test No 1
(Blinebry)

ON 5:00 P.M.
3-9-1927

OFF 6:10 P.M.
3-10-1927

LOCATION

REMARKS

B O-1500-12
Los Angeles, California

PRINTED IN U.S.A.