

**NEW MEXICO OIL CONSERVATION COMMISSION
WELL LOCATION AND ACREAGE DEDICATION PLAT**

Form C-102
Supersedes C-128
Effective 1-1-65

All distances must be from the outer boundaries of the Section.

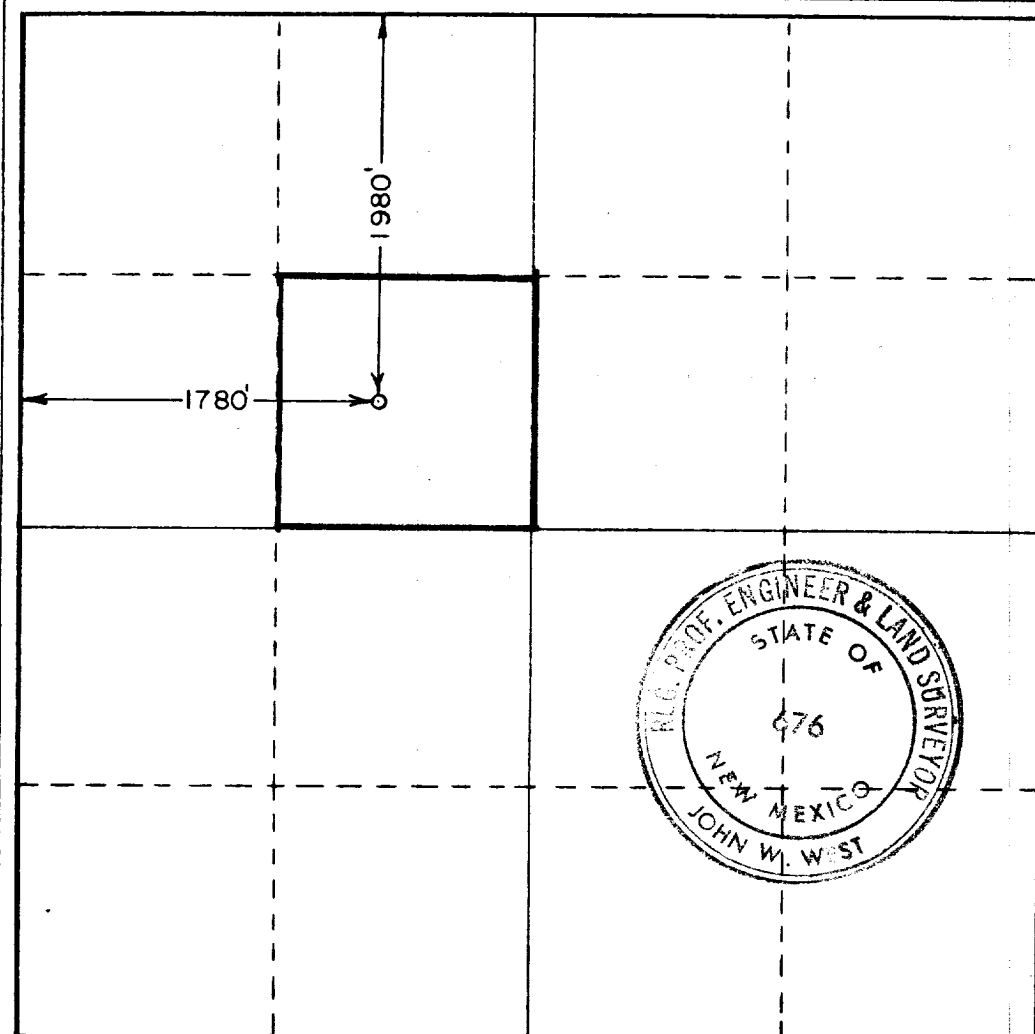
Operator GULF OIL CORP.			Lease C.E. LAMUNYON		Well No. 26
Unit Letter F	Section 27	Township 23 SOUTH	Range 37 EAST	County LEA	
Actual Footage Location of Well: 1980 feet from the NORTH line and 1780 feet from the WEST line					
Ground Level Elev. 3288.0	Producing Formation Klinebry		Pool Teague Klinebry	Dedicated Acreage: 40 Acres	

1. Outline the acreage dedicated to the subject well by colored pencil or hachure marks on the plat below.
2. If more than one lease is dedicated to the well, outline each and identify the ownership thereof (both as to working interest and royalty).
3. If more than one lease of different ownership is dedicated to the well, have the interests of all owners been consolidated by communitization, unitization, force-pooling, etc?

☐ Yes ☐ No If answer is "yes," type of consolidation _____

If answer is "no," list the owners and tract descriptions which have actually been consolidated. (Use reverse side of this form if necessary.) _____

No allowable will be assigned to the well until all interests have been consolidated (by communitization, unitization, forced-pooling, or otherwise) or until a non-standard unit, eliminating such interests, has been approved by the Commission.



CERTIFICATION

I hereby certify that the information contained herein is true and complete to the best of my knowledge and belief.

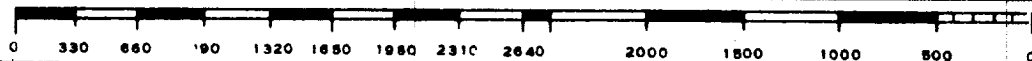
H. J. Swannack

Name H. J. Swannack
Position Area Manager
Company Gulf Oil Corp.
Date 2-2-68

I hereby certify that the well location shown on this plat was plotted from field notes of actual surveys made by me or under my supervision, and that the same is true and correct to the best of my knowledge and belief.

Date Surveyed JANUARY 31, 1968
Registered Professional Engineer and/or Land Surveyor

John W. West
Certificate No. **676**



COUNTY	LEA	FIELD	Teague	STATE	NM
CORP	GULF OIL CORP.			MAP	
26 LaMunyon, C. E.					
Sec. 27, T-23-S, R-37-E					
1980' BNL, 1780' FWL of Sec.				CO-ORD 30-025-02-28	
Spd 2-9-68					
Cmp 3-16-68		CLASS		EL [REDACTED]	
		FORMATION	DATUM	FORMATION	DATUM
CSG & SX - TUBING					
8 5/8" 896' 370					
5 1/2" 5919' 440					
LOGS EL GR RA IND HC A					
		TD 5925', PED 5885'			
IP Blinetry Perfs 5601-5735' Pmpd 41 EOPD + 117 EW. Pot.					
Based on 24 hr test, GOR 1854, Gravity 40.2.					

Distribution limited and publication prohibited by subscribers' agreement.
Reproduction rights reserved by Williams & Lee Scouting Service, Inc.

CONT Cactus Drilg. Co. PROP DEPTH 6300' TYPE RC
DATE

F.R. 2-15-68
FD 6300' - Bli.
Contr. - Cactus
2-19-68 Drilg. 4400' lm & sd.
2-26-68 Drilg. 5860' lm.
3-4-68 TD 5925', PED 5885', SI.
Perf 5601-03', 5668-70', 5733-25' W/4 SPF
Acid (5601-5735') 4000 gals (7 1/2")
Brac (5601-5735') 15,000 gals gelled brine
+ 12,000# sd.
3-11-68 TD 5925', PED 5885', WO Electricity
Swcd 31 EO + 86 EW in 8 1/2 hrs.
3-18-68 TD 5925', PED 5885', COMPLETE
LOG: Glor 4958', Blinetry 5350'