

UNITED STATES
DEPARTMENT OF THE INTERIOR
GEOLOGICAL SURVEY

APPLICATION FOR PERMIT TO DRILL, DEEPEN, OR PLUG BACK

1a. TYPE OF WORK

DRILL ☒DEEPEN ☐PLUG BACK ☐

b. TYPE OF WELL.

OIL
WELL ☐GAS
WELL ☒

OTHER

SINGLE
ZONE ☒MULTIPLE
ZONE ☐

2. NAME OF OPERATOR

TEXACO INC.

3. ADDRESS OF OPERATOR

P. O. BOX 3109, MIDLAND, TEXAS 79701

4. LOCATION OF WELL (Report location clearly and in accordance with any State requirements.)*

At surface

660' FSL & 660' FEL, SEC. 33, T-24-S, R-32-E.

At proposed prod. zone

14. DISTANCE IN MILES AND DIRECTION FROM NEAREST TOWN OR POST OFFICE*

21 miles south of Malaga, New Mexico

15. DISTANCE FROM PROPOSED*

LOCATION TO NEAREST
PROPERTY OR LEASE LINE, FT.
(Also to nearest drlg. unit line, if any)

5940'

16. NO. OF ACRES IN LEASE

35,146.30

18. DISTANCE FROM PROPOSED LOCATION*

TO NEAREST WELL, DRILLING, COMPLETED,
OR APPLIED FOR, ON THIS LEASE, FT.

1866'

19. PROPOSED DEPTH

4850

21. ELEVATIONS (Show whether DF, RT, GR, etc.)

Not Available

17. NO. OF ACRES ASSIGNED
TO THIS WELL

40

20. ROTARY OR CABLE TOOLS

Rotary

22. APPROX. DATE WORK WILL START*

At once

23.

PROPOSED CASING AND CEMENTING PROGRAM

SIZE OF HOLE	SIZE OF CASING	WEIGHT PER FOOT	SETTING DEPTH	QUANTITY OF CEMENT
9 7/8	7 5/8	24#	475	*300 Sx-300% to circulate
6 3/4	4 1/2	95#	4850'	**150 Sx-200% to tie back to base of salt.

* Cement with 300 Sx Class "C" w/1% Ca Chl., 14.8#/gal. (300% to circulate)
Cement must circulate**Cement with 150 Sx Class "C" w/10#/Sk Salt, 14.8#/gal. Run centralizers 4600'-
TD. (200% to tie back to base of salt.)

COMPLETION PROGRAM

1. Perf. 2 J S P F. 2. Treat w/500 gals. 15% N.E. acid followed by 2000 gals
refined oil w/2000# 10-20 Sd.

FORMATION TOPS EXPECTED

Base Salt 4470'
Dewey Lake 460'
Top Anhydrite 860'Delaware Sand 4705'
Total Depth 4850'

IN ABOVE SPACE DESCRIBE PROPOSED PROGRAM: If proposal is to deepen or plug back, give data on present productive zone and proposed new productive zone. If proposal is to drill or deepen directionally, give pertinent data on subsurface locations and measured and true vertical depths. Give blowout preventer program, if any.

24.

SIGNED

J. J. Velten

TITLE

Civil Engineer

DATE

8/28/68

(This space for Federal or State office use)

PERMIT NO.

APPROVAL DATE

APPROVED BY

TITLE

CONDITIONS OF APPROVAL, IF ANY:

APPROVED
AUG 29 1968
A. R. BROWN
DISTRICT ENGINEER

*See Instructions On Reverse Side

NEW MEXICO OIL CONSERVATION COMMISSION
WELL LOCATION AND ACREAGE DEDICATION PLAT

Form C-102
 Supersedes C-128
 Effective 1-1-65

All distances must be from the outer boundaries of the Section.

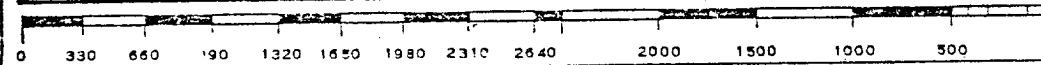
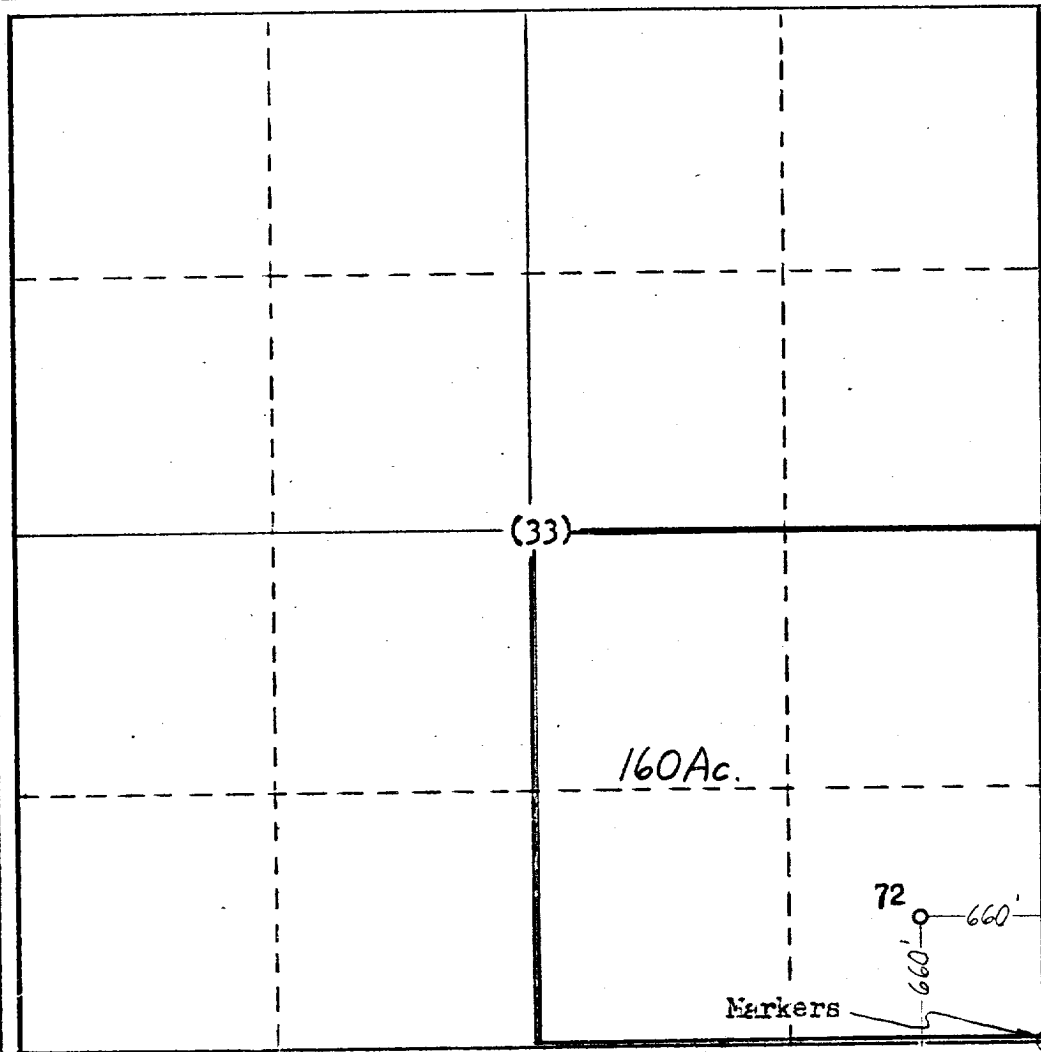
Operator TEXACO Inc.			Lease Cotton Draw Unit			Well No. 72		
Unit Letter P	Section 33	Township 24 South	Range 32 East	County Lea				
Actual Footage Location of Well: 660' feet from the South line and 660' feet from the East line Sec. 33								
Ground Level Elev. Not Available	Producing Formation Delaware Sand		Pool UNDESIGNATED North Paduca - Delaware			Dedicated Acreage: 160 Acres		

1. Outline the acreage dedicated to the subject well by colored pencil or hachure marks on the plat below.
2. If more than one lease is dedicated to the well, outline each and identify the ownership thereof (both as to working interest and royalty).
3. If more than one lease of different ownership is dedicated to the well, have the interests of all owners been consolidated by communitization, unitization, force-pooling, etc?

☒ Yes ☐ No If answer is "yes," type of consolidation **Unitization & Development Agreement**

If answer is "no," list the owners and tract descriptions which have actually been consolidated. (Use reverse side of this form if necessary.) _____

No allowable will be assigned to the well until all interests have been consolidated (by communitization, unitization, forced-pooling, or otherwise) or until a non-standard unit, eliminating such interests, has been approved by the Commission.



CERTIFICATION	
I hereby certify that the information contained herein is true and complete to the best of my knowledge and belief.	
Name	J. J. Velten
Position	Division Civil Engineer
Company	TEXACO Inc.
Date	8/28/68
I hereby certify that the well location shown on this plat was plotted from field notes of actual surveys made by me or under my supervision, and that the same is true and correct to the best of my knowledge and belief.	
Date Surveyed	8/28/68
Registered Professional Engineer and/or Land Surveyor	J. J. Velten
Certificate No.	8174