

UNITED STATES
DEPARTMENT OF THE INTERIOR
GEOLOGICAL SURVEY

APPLICATION FOR PERMIT TO DRILL, DEEPEN, OR PLUG BACK

1a. TYPE OF WORK

DRILL ☒

DEEPEN ☐

PLUG BACK ☐

b. TYPE OF WELL

OIL
WELL ☒

GAS
WELL ☐

OTHER

SINGLE
ZONE ☐

MULTIPLE
ZONE ☐

2. NAME OF OPERATOR

Gulf Oil Corporation

3. ADDRESS OF OPERATOR

P. O. Box 980, Kermit, Texas

4. LOCATION OF WELL (Report location clearly and in accordance with any State requirements.*)

At surface

660' FWL & 660' FWL

At proposed prod. zone

Within 300' of surface location

14. DISTANCE IN MILES AND DIRECTION FROM NEAREST TOWN OR POST OFFICE*

11 miles North of Jol, New Mexico

15. DISTANCE FROM PROPOSED*

LOCATION TO NEAREST

PROPERTY OR LEASE LINE, FT.

(Also to nearest drlg. unit line, if any)

660'

16. NO. OF ACRES IN LEASE

1600

17. NO. OF ACRES ASSIGNED
TO THIS WELL

40

18. DISTANCE FROM PROPOSED LOCATION*

TO NEAREST WELL, DRILLING, COMPLETED,

OR APPLIED FOR, ON THIS LEASE, FT.

467 ft SW

Langie Hill No. 2

19. PROPOSED DEPTH

5900'

20. ROTARY OR CABLE TOOLS

Rotary

21. ELEVATIONS (Show whether DF, RT, GR, etc.)

3295' GR

22. APPROX. DATE WORK WILL START*

Upon approval

23.

PROPOSED CASING AND CEMENTING PROGRAM

SIZE OF HOLE	SIZE OF CASING	WEIGHT PER FOOT	SETTING DEPTH	QUANTITY OF CEMENT
11"	8-5/8"	24.00	850'	Circulate to surface
7-7/8"	5-1/2"	15.50	5900'	Top @ base of salt (2300')

Propose to drill to 5900' to test the Teague
Blinsbury formation within the interval 5350' to 5900'.

IN ABOVE SPACE DESCRIBE PROPOSED PROGRAM: If proposal is to deepen or plug back, give data on present productive zone and proposed new productive zone. If proposal is to drill or deepen directionally, give pertinent data on subsurface locations and measured and true vertical depths. Give blowout preventer program, if any.

24. ORIGINAL SIGNED BY: H. F. SWANBACK
SIGNED: H. F. Swanback TITLE: Area Production Manager DATE: May 1, 1969
(This space for Federal or State office use)

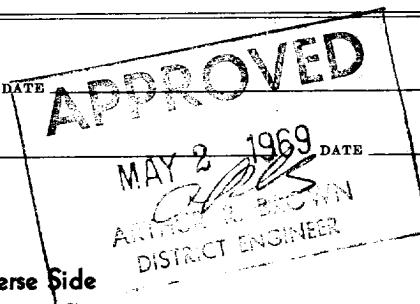
PERMIT NO.

APPROVAL DATE

APPROVED BY

TITLE

CONDITIONS OF APPROVAL, IF ANY:



*See Instructions On Reverse Side

Instructions

General: This form is designed for submitting proposals to perform certain well operations, as indicated, on all types of lands and leases for appropriate action by either a Federal or a State agency, or both, pursuant to applicable Federal and/or State laws and regulations. Any necessary special instructions concerning the use of this form and the number of copies to be submitted, particularly with regard to local, area, or regional procedures and practices, either are shown below or will be issued by, or may be obtained from, the local Federal and/or State office.

Item 1: If the proposal is to redrill to the same reservoir at a different subsurface location or to a new reservoir, use this form with appropriate notations. Consult applicable State or Federal regulations concerning subsequent work proposals or reports on the well.

Item 4: If there are no applicable State requirements, locations on Federal or Indian land should be described in accordance with Federal requirements. Consult local State or Federal office for specific instructions.

Item 14: Needed only when location of well cannot readily be found by road from the land or lease description. A plat, or plats, separate or on this reverse side, showing the roads to, and the surveyed location of, the well, and any other required information, should be furnished when required by Federal or State agency offices.

Items 15 and 18: If well is to be, or has been directionally drilled, give distances for subsurface location of hole in any present or objective production zone.

Item 22: Consult applicable Federal or State regulations, or appropriate officials, concerning approval of the proposal before operations are started.

NEW MEXICO OIL CONSERVATION COMMISSION
WELL LOCATION AND ACREAGE DEDICATION PLAT
HOBBBS OFFICE O. C. C.

Form C-102
Supersedes C-128
Effective 1-1-65

All distances must be from the outer boundaries of the Section.

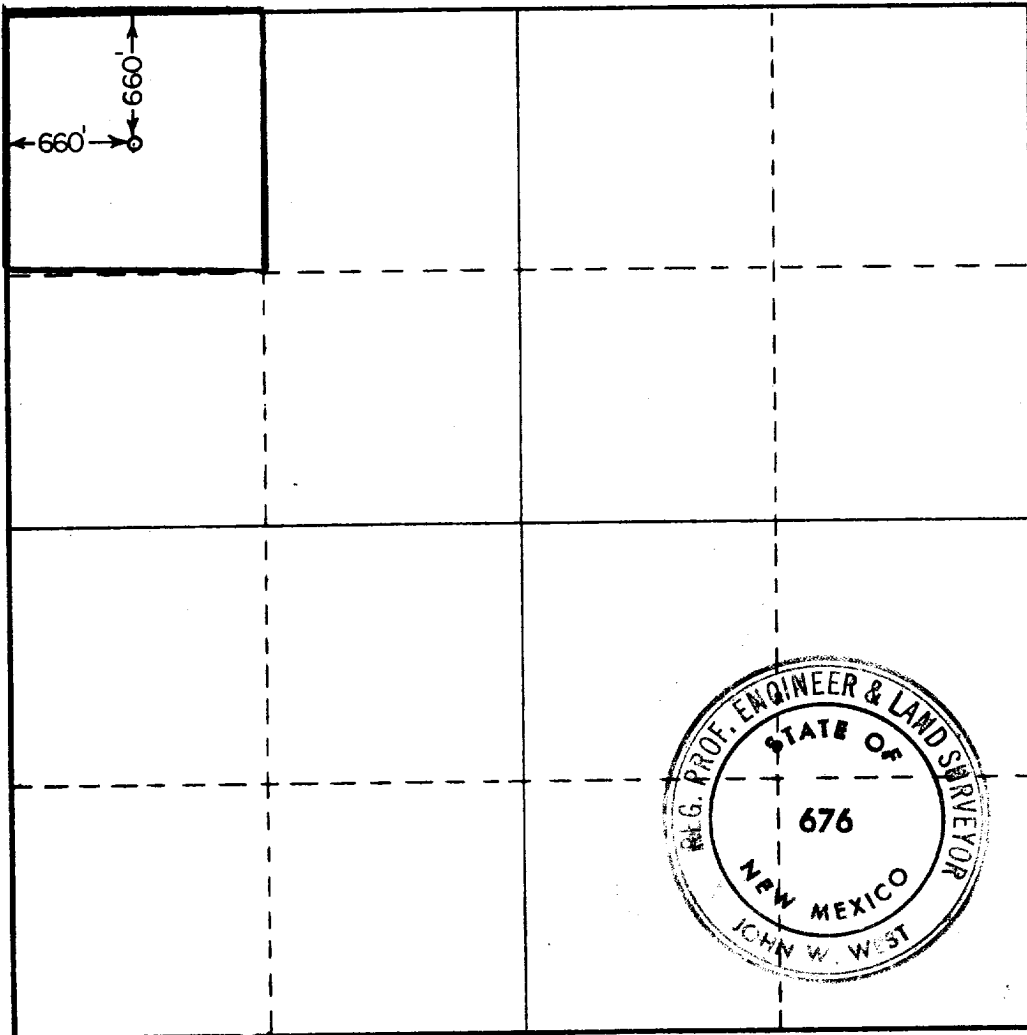
Operator GULF OIL CORP.		Lease MAY 6 9 01 AM '69 C.E. LA MUNYON		Well No. 44
Unit Letter D	Section 22	Township 23 SOUTH	Range 37 EAST	County LEA
Actual Footage Location of Well: 660 feet from the NORTH line and 660 feet from the WEST line				
Ground Level Elev. 3294.92	Producing Formation Elmory	Pool Elmory	Dedicated Acreage: 40 Acres	

1. Outline the acreage dedicated to the subject well by colored pencil or hachure marks on the plat below.
2. If more than one lease is dedicated to the well, outline each and identify the ownership thereof (both as to working interest and royalty).
3. If more than one lease of different ownership is dedicated to the well, have the interests of all owners been consolidated by communitization, unitization, force-pooling, etc?

☐ Yes ☐ No If answer is "yes," type of consolidation _____

If answer is "no," list the owners and tract descriptions which have actually been consolidated. (Use reverse side of this form if necessary.) _____

No allowable will be assigned to the well until all interests have been consolidated (by communitization, unitization, forced-pooling, or otherwise) or until a non-standard unit, eliminating such interests, has been approved by the Commission.



CERTIFICATION

I hereby certify that the information contained herein is true and complete to the best of my knowledge and belief.

ORIGINAL
SIGNED BY: **H. F. SWANBACK**

Name
H. F. Swanback

Position
Area Production Manager

Company
Gulf Oil Corporation

Date
May 1, 1969

I hereby certify that the well location shown on this plat was plotted from field notes of actual surveys made by me or under my supervision, and that the same is true and correct to the best of my knowledge and belief.

Date Surveyed
APRIL 30, 1969

Registered Professional Engineer
and/or Land Surveyor

John W. West
Certificate No. **676**

473

COUNTY LEA FIELD Teague STATE NM 30-025-23133
 OPR GULF OIL CORP. MAP
 44 LaMunyon, C. E.
 Sec 22, T-23-S, R-37-E
 660' FNL, 660' FWL of Sec. CO-ORD
 Spd 5-20-69
 Cmp 6-13-69 CLASS

CSG & SX - TUBING
 8 5/8" at 903' w/350 sx
 5 1/2" at 5900' w/440 sx

LOGS EL GR RA IND HC A

TD 5900'

IP (Blinebry) Perfs 5390-5812' F 394 BOPD + 201 BW. Pot based on
 24 hr test thru 1/2" chk, TP 290#

Distribution limited and publication prohibited by subscribers' agreement.
 Reproduction rights reserved by Williams & Lee Scouting Service, Inc.

CONT. Cactus
 DATE

PROP DEPTH 5900' TYPE

F.R. 5-6-69
 PD 5900' (Blinebry)
 Contractor - Cactus
 5-26-69 Drlg. 3520' 1m
 6-2-69 Drlg. 5550' 1m
 6-9-69 TD 5900'; Prep perf
 6-16-69 TD 5900'; WO Pot
 Perf 5390-92', 5440-42', 5487-89', 5650-52',
 5708-10', 5756-58', 5810-12' w/4 SPF
 Acid (5390-5812') 7000 gals
 Frac (5390-5812') 60,000 gals gel wtr + 9000# sd
 Flwd 394 BO + 201 BLW in 24 hrs, thru 1/2" chk,
 TP 290#
 6-23-69 TD 5900'; COMPLETE
 6-26-69 COMPLETION REPORTED

100