

UNITED STATES
DEPARTMENT OF THE INTERIOR
GEOLOGICAL SURVEY

APPLICATION FOR PERMIT TO DRILL, DEEPEN, OR PLUG BACK

1a. TYPE OF WORK

DRILL ☒DEEPEN ☐PLUG BACK ☐

b. TYPE OF WELL

OIL
WELL ☒GAS
WELL ☐OTHER ☐SINGLE
ZONE ☒MULTIPLE
ZONE ☐

2. NAME OF OPERATOR

Amoco Production Company

3. ADDRESS OF OPERATOR

P. O. Box 68 Hobbs, NM 88240

4. LOCATION OF WELL (Report location clearly and in accordance with applicable regulations.)

At surface

660' FNL & 1980' FEL

At proposed prod. zone (Unit B, NW/4, NE/4)

14. DISTANCE IN MILES AND DIRECTION FROM NEAREST TOWN OR POST OFFICE

25 miles west of Jal, NM

15. DISTANCE FROM PROPOSED*

LOCATION TO NEAREST
PROPERTY OR LEASE LINE, FT.
(Also to nearest drlg. unit line, if any)

16. NO. OF ACRES IN LEASE

17. NO. OF ACRES ASSIGNED
TO THIS WELL

40

18. DISTANCE FROM PROPOSED LOCATION*
TO NEAREST WELL, DRILLING, COMPLETED,
OR APPLIED FOR, ON THIS LEASE, FT.

19. PROPOSED DEPTH

5500'

20. ROTARY OR CABLE TOOLS

Rotary

21. ELEVATIONS (Show whether DF, RT, GR, etc.)

3240.4'

22. APPROX. DATE WORK WILL START*

4-15-81

23.

PROPOSED CASING AND CEMENTING PROGRAM

SIZE OF HOLE	SIZE OF CASING	WEIGHT PER FOOT	SETTING DEPTH	QUANTITY OF CEMENT
12-1/4"	8-5/8"	36#	800'	Circulate to surface
7-7/8"	5-1/2"	20#	5500'	Tie back to 8-5/8"

Propose to drill and equip well in the Delaware formation. After reaching TD, logs will be run and evaluated. Will perforate and stimulate as necessary in attempting commercial production.

MUD PROGRAM: 0'-800' Native mud and fresh water
800'-TD Commercial mud and brine with minimum properties for safe hole conditions.

Archaeological survey attached
BOP Program Attached.

0+6-USGS, H 1-Hou 1-Susp 1-LBG 1-W. Stafford, Hou

IN ABOVE SPACE DESCRIBE PROPOSED PROGRAM: If proposal is to deepen or plug back, give data on present productive zone and proposed new productive zone. If proposal is to drill or deepen directionally, give pertinent data on subsurface locations and measured and true vertical depths. Give blowout preventer program, if any.

24.

SIGNED

TITLE Assist. Admin. Analyst

DATE 3-10-81

(This space for Federal or State office use)

PERMIT NO.

APPROVED

APPROVAL DATE

APPROVED BY

GEORGE H. STEWART

TITLE

DATE

CONDITIONS OF APPROVAL, IF ANY:

APR 10 1981

JAMES A. GILLHAM*
DISTRICT SUPERVISOR

*See Instructions On Reverse Side

**NEW MEXICO OIL CONSERVATION COMMISSION
WELL LOCATION AND ACREAGE DEDICATION PLAT**

Form C-102
Supersedes C-128
Effective 1-1-65

All distances must be from the outer boundaries of the Section.

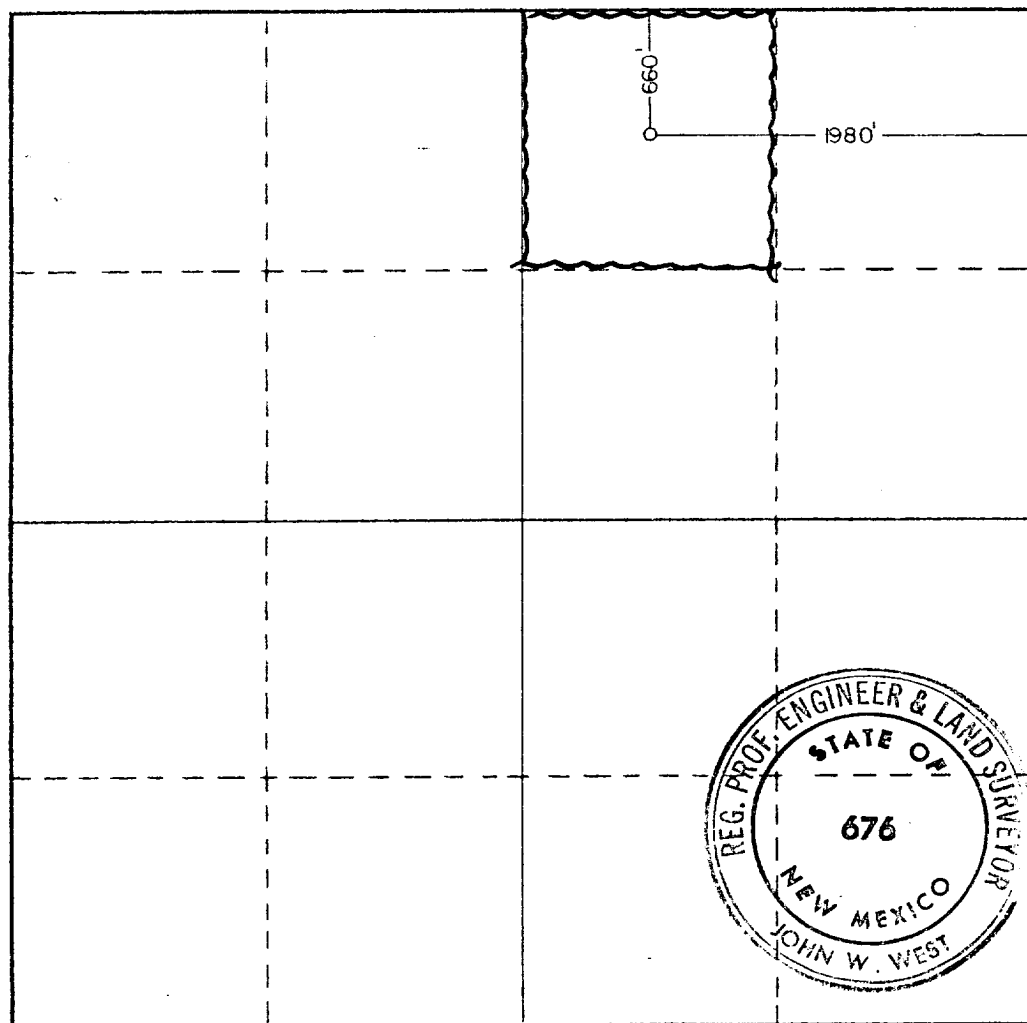
Operator Amoco Production Co.			Lease Fed. CH		Well No. 1
Unit Letter B	Section 22	Township 26 South	Range 34 East	County Lea	
Actual Footage Location of Well: <div style="display: flex; justify-content: space-between;"> 660 feet from the North line and 1980 feet from the East line </div>					
Ground Level Elev. 3240.4	Producing Formation Delaware	Pool Wildcat Delaware		Dedicated Acreage: 40 Acres	

1. Outline the acreage dedicated to the subject well by colored pencil or hatchure marks on the plat below.
2. If more than one lease is dedicated to the well, outline each and identify the ownership thereof (both as to working interest and royalty).
3. If more than one lease of different ownership is dedicated to the well, have the interests of all owners been consolidated by communitization, unitization, force-pooling, etc?

☐ Yes ☐ No If answer is "yes," type of consolidation _____

If answer is "no," list the owners and tract descriptions which have actually been consolidated. (Use reverse side of this form if necessary.) _____

No allowable will be assigned to the well until all interests have been consolidated (by communitization, unitization, forced-pooling, or otherwise) or until a non-standard unit, eliminating such interests, has been approved by the Commission.



CERTIFICATION

I hereby certify that the information contained herein is true and complete to the best of my knowledge and belief.

Name: Benton Green
Position: Assistant Admin. Analyst
Company: Amoco Production Company
Date: 3-10-81

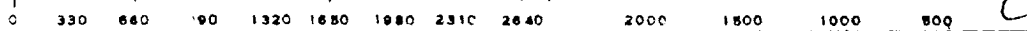
I hereby certify that the well location shown on this plat was plotted from field notes of actual surveys made by me or under my supervision, and that the same is true and correct to the best of my knowledge and belief.

Date Surveyed: 2-18-81

Registered Professional Engineer and/or Land Surveyor

John W. West

Certificate No. JOHN W. WEST 676
PATRICK A. ROMERO 6863
Ronald J. Eidson 3239



RECEIVED
APR 21 1981

One hundred and thirty.