

UNITED STATES
DEPARTMENT OF THE INTERIOR
GEOLOGICAL SURVEY

SUBMIT IN TRIPLICATE*
(Other instructions on
reverse side)

Form approved.
Budget Bureau No. 42-R1425.

30 825-23913

N.M. 7951

APPLICATION FOR PERMIT TO DRILL, DEEPEN, OR PLUG BACK

1a. TYPE OF WORK DRILL ☒ DEEPEN ☐ PLUG BACK ☐

b. TYPE OF WELL OIL WELL ☒ GAS WELL ☐ OTHER ☐ SINGLE ZONE ☐ MULTIPLE ZONE ☐

2. NAME OF OPERATOR The Petroleum Corporation

3. ADDRESS OF OPERATOR 3303 Lee Parkway, Dallas, Texas 75219

4. LOCATION OF WELL (Report location clearly and in accordance with any State requirements.*)
At surface Unit N, 990 feet from the south line and 2310 feet from the west line of Section 12
At proposed prod. zone

14. DISTANCE IN MILES AND DIRECTION FROM NEAREST TOWN OR POST OFFICE*
Seven miles southeast of Jal

10. DISTANCE FROM PROPOSED* LOCATION TO NEAREST PROPERTY OR LEASE LINE, FT. (Also to nearest drilg. unit line, if any) 990

18. DISTANCE FROM PROPOSED LOCATION* TO NEAREST WELL, DRILLING COMPLETED, OR APPLIED FOR, ON THIS LEASE, FT. 12,000

21. ELEVATIONS (Show whether DF, RT, GR, etc.)

PROPOSED CASING AND CEMENTING PROGRAM

SIZE OF HOLE	SIZE OF CASING	WEIGHT PER FOOT	SETTING DEPTH	QUANTITY OF CEMENT
15	11-3/4	42	400	circulated
11	8-5/8	24 and 32	3,800	500 sacks
7-7/8	5-1/2	20 and 17	12,000	400 sacks

Double ram blowout preventer will be used from 400 feet to total depth along with appropriate choke manifold.

IN ABOVE SPACE DESCRIBE PROPOSED PROGRAM: If proposal is to deepen or plug back, give data on present productive zone and proposed new productive zone. If proposal is to drill or deepen directionally, give pertinent data on subsurface locations and measured and true vertical depths. Give blowout preventer program, if any.

SIGNED Sammy C. Brown
(This space for Federal or State office use)

PERMIT NO. _____

APPROVED BY _____
CONDITIONS OF APPROVAL, IF ANY:

TITLE Petroleum Engineer DATE November 23, 1971
APPROVED
APPROVAL DATE DEC 1 1971
ARTHUR R. BROWN
DISTRICT ENGINEER

5. LEASE DESIGNATION AND SERIAL NO. NM 062384.
6. IF INDIAN, ALLOTTEE OR TRIBE NAME
7. UNIT AGREEMENT NAME
8. FARM OR LEASE NAME Tenneco Federal
9. WELL NO. 1
10. FIELD AND POOL, OR WILDCAT Wildcat
11. SEC., T., R., M., OR BLK. AND SURVEY OR AREA Section 12, T26S-R37E
12. COUNTY OR PARISH Lea
13. STATE New Mexico

17. NO. OF ACRES ASSIGNED TO THIS WELL 40
20. ROTARY OR CABLE TOOLS rotary
22. APPROX. DATE WORK WILL START* Dec. 2, 1971

NEW MEXICO OIL CONSERVATION COMMISSION
WELL LOCATION AND ACREAGE DEDICATION PLAT

Form C-102
Supersedes C-128
Effective 1-1-65

All distances must be from the outer boundaries of the Section

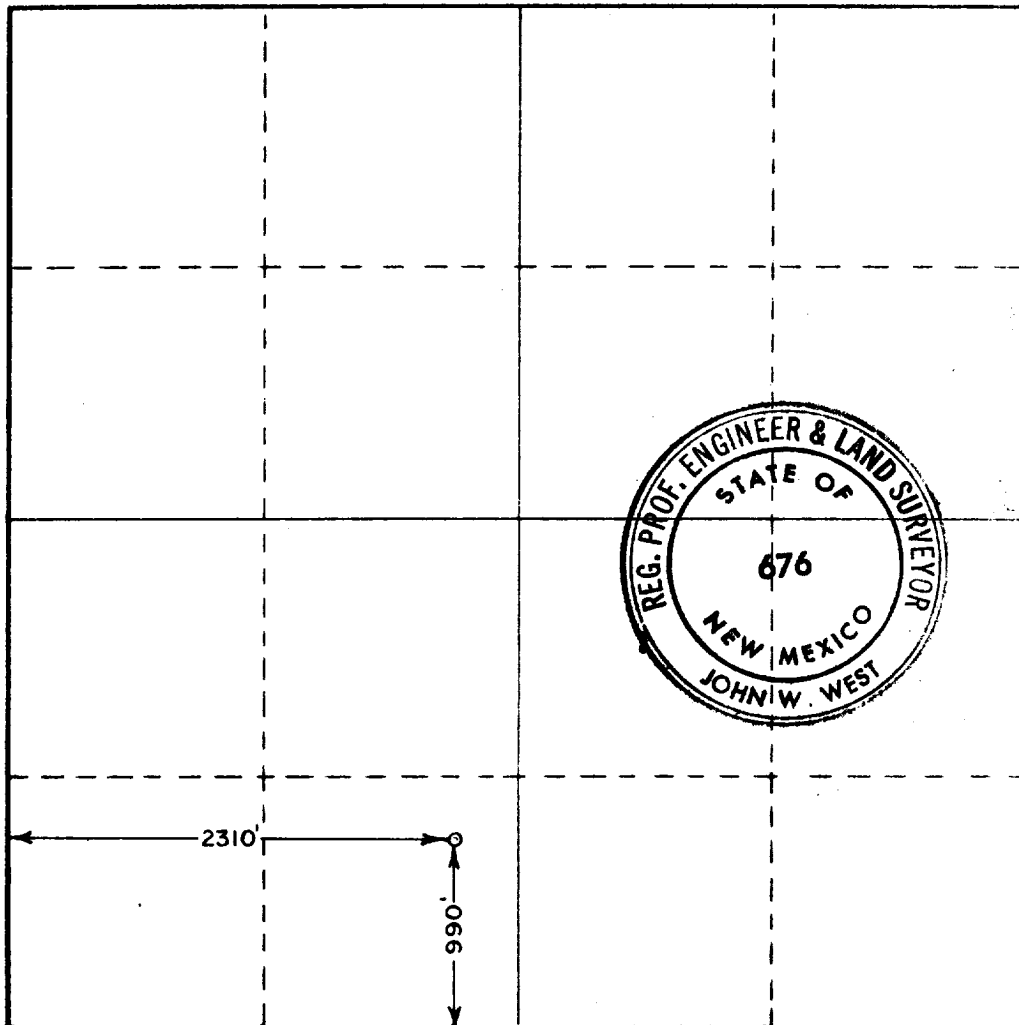
Operator THE PETROLEUM CORP.			Lease TENNECO FEDERAL		Well No. 1
Unit Letter N	Section 12	Township 26 SOUTH	Range 37 EAST	County LEA	
Actual Footage Location of Well: 990 feet from the SOUTH line and 2310 feet from the WEST line					
Ground Level Elev. 3000.8	Producing Formation ELLENBURGER		Pool WILDCAT	Dedicated Acreage: 40 Acres	

1. Outline the acreage dedicated to the subject well by colored pencil or hatchure marks on the plat below.
2. If more than one lease is dedicated to the well, outline each and identify the ownership thereof (both as to working interest and royalty).
3. If more than one lease of different ownership is dedicated to the well, have the interests of all owners been consolidated by communitization, unitization, force-pooling, etc?

☐ Yes ☐ No If answer is "yes," type of consolidation _____

If answer is "no," list the owners and tract descriptions which have actually been consolidated. (Use reverse side of this form if necessary.) _____

No allowable will be assigned to the well until all interests have been consolidated (by communitization, unitization, forced-pooling, or otherwise) or until a non-standard unit, eliminating such interests, has been approved by the Commission.



CERTIFICATION

I hereby certify that the information contained herein is true and complete to the best of my knowledge and belief.

Name *John W West*
Position

AGENT

Company
THE PETROLEUM CORP.

Date
Nov. 24, 1971

I hereby certify that the well location shown on this plat was plotted from field notes of actual surveys made by me or under my supervision, and that the same is true and correct to the best of my knowledge and belief.

Date Surveyed

NOVEMBER 24, 1971

Registered Professional Engineer and/or Land Surveyor

John W West
Certificate No.

676

