

UNITED STATES
DEPARTMENT OF THE INTERIOR
GEOLOGICAL SURVEY

APPLICATION FOR PERMIT TO DRILL, DEEPEN, OR PLUG BACK

1a. TYPE OF WORK

DRILL ☒DEEPEN ☐PLUG BACK ☐

b. TYPE OF WELL

OIL
WELL ☒GAS
WELL ☐

OTHER

SINGLE
ZONE ☒MULTIPLE
ZONE ☐

2. NAME OF OPERATOR

TEXACO INC.

c/o DARRELL SMITH

3. ADDRESS OF OPERATOR

P. O. BOX 3109, MIDLAND, TEXAS 79701

4. LOCATION OF WELL (Report location clearly and in accordance with any State requirements.)*

At surface 1980' FNAWL, Section 26, T-26-S, R-37-E

At proposed prod. zone

14. DISTANCE IN MILES AND DIRECTION FROM NEAREST TOWN OR POST OFFICE*

6 miles Southeast of Jal, New Mexico

15. DISTANCE FROM PROPOSED*

LOCATION TO NEAREST
PROPERTY OR LEASE LINE, FT.
(Also to nearest drlg. unit line, if any)

1980'

18. DISTANCE FROM PROPOSED LOCATION*

TO NEAREST WELL, DRILLING, COMPLETED,
OR APPLIED FOR, ON THIS LEASE, FT.

1153'

16. NO. OF ACRES IN LEASE

1600

19. PROPOSED DEPTH

3400'

17. NO. OF ACRES ASSIGNED

TO THIS WELL

40

20. ROTARY OR CABLE TOOLS

Rotary

21. ELEVATIONS (Show whether DF, RT, GR, etc.)

GR 2993

22. APPROX. DATE WORK WILL START*

At Once

23.

PROPOSED CASING AND CEMENTING PROGRAM

| SIZE OF HOLE | SIZE OF CASING | WEIGHT PER FOOT | SETTING DEPTH | QUANTITY OF CEMENT |
|--------------|----------------|-----------------|---------------|---|
| 11" | 8 5/8" | 20# | 450' | * 250 ax - 250% to Circulate |
| 7 7/8" | 5 1/2" | 14# | 3400' | **320 ax - 150% to bring cement top to 1750' |

*250 ax Class C cement + 2% CaCl 14.8 ppg (250% to Circulate)

**320 ax Class C + 10#/sk salt 14.8 ppg (150% to bring cement top to 1750')

FORMATION TOPS

Yates 2820'

Seven Rivers-Yates 3140'

Total Depth 3400'

IN ABOVE SPACE DESCRIBE PROPOSED PROGRAM: If proposal is to deepen or plug back, give data on present productive zone and proposed new productive zone. If proposal is to drill or deepen directionally, give pertinent data on subsurface locations and measured and true vertical depths. Give blowout preventer program, if any.

24.

SIGNED

Arthur L. Eiland

TITLE

Civil Engineer

DATE

December 20, 1971

(This space for Federal or State office use)

PERMIT NO.

APPROVAL DATE

APPROVED BY

TITLE

CONDITIONS OF APPROVAL, IF ANY:

APPROVED
DEC 21 1971ARTHUR R. BROWN
DISTRICT ENGINEER

*See Instructions On Reverse Side

RECEIVED

APR 21 1971

OIL CONSERVATION COMM.
HOUSTON, TEXAS

NEW TEXACO OIL CONSERVATION COMMISSION
WELL LOCATION AND ACREAGE DEDICATION PLAT

Form C-102
Supersedes C-12B
Effective 1-1-65

All distances must be from the outer boundaries of the Section.

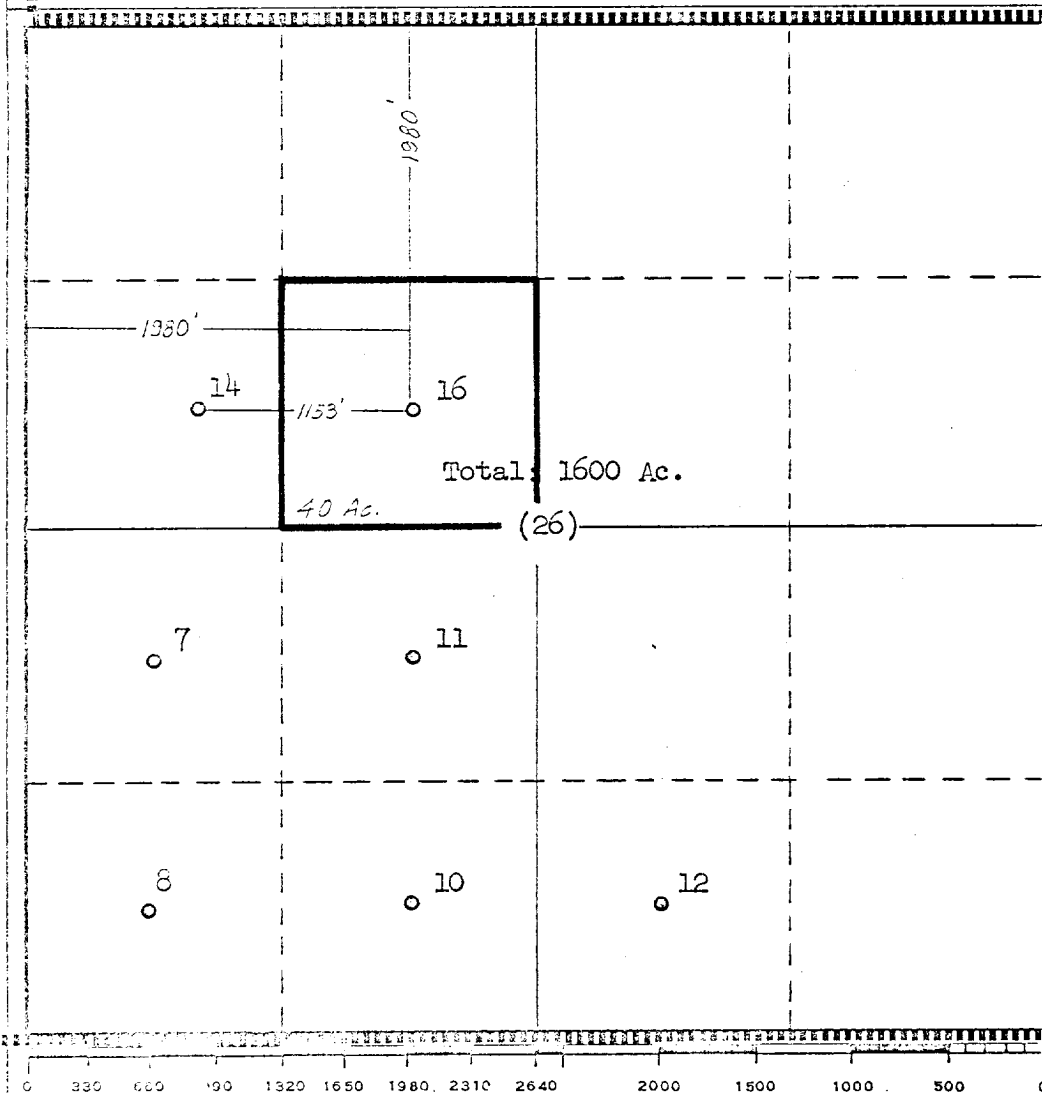
| | | | | |
|--|---|--------------------------------------|--------------------------------|----------------|
| Operator TEXACO Inc. | | Lease W. H. Rhodes Fed. "B" NCT-1 | | Well No. 16 |
| Unit Letter F | Section 26 | Township 26 South | Range 37 East | County Lea |
| Actual Postage Location of Well: 1980' feet from the North line and 1980' feet from the West line Sec. 26 | | | | |
| Ground Level Elev. 2993' | Producing Formation Yates-Seven Rivers | Pool Rhodes Yates | Dedicated Acreage: 40 Acres | |

1. Outline the acreage dedicated to the subject well by colored pencil or hachure marks on the plat below.
2. If more than one lease is dedicated to the well, outline each and identify the ownership thereof (both as to working interest and royalty).
3. If more than one lease of different ownership is dedicated to the well, have the interests of all owners been consolidated by communitization, unitization, force-pooling, etc?

☐ Yes ☐ No If answer is "yes," type of consolidation _____

If answer is "no," list the owners and tract descriptions which have actually been consolidated. (Use reverse side of this form if necessary.) _____

No allowable will be assigned to the well until all interests have been consolidated (by communitization, unitization, forced-pooling, or otherwise) or until a non-standard unit, eliminating such interests, has been approved by the Commission.



| | |
|---|--------------------------|
| CERTIFICATION | |
| I hereby certify that the information contained herein is true and complete to the best of my knowledge and belief. | |
| <i>B. L. Eiland</i> | |
| Name | B. L. Eiland |
| Position | Registered Land Surveyor |
| Company | TEXACO Inc. |
| Date | 12/20/71 |
| I hereby certify that the well location shown on this plat was plotted from field notes of actual surveys made by me or under my supervision, and that the same is true and correct to the best of my knowledge and belief. | |
| <i>B. L. Eiland</i> | |
| Date Surveyed | 12/16/71 |
| Registered Professional Engineer and/or Land Surveyor | |
| B. L. Eiland | |
| Certificate No. | 4386 |

RECEIVED

FEB 20 1971

**OIL CONSERVATION COMM.
HOBBS, N. M.**