

Submit to Appropriate
District Office
State Lease - 4 copies
Fee Lease - 3 copies

State of New Mexico
Energy, Minerals and Natural Resources Department

Form C-102
Revised 1-1-89

OIL CONSERVATION DIVISION

P.O. Box 2088
Santa Fe, New Mexico 87504-2088

DISTRICT I
P.O. Box 1980, Hobbs, NM 88240

DISTRICT II
P.O. Drawer DD, Artesia, NM 88210

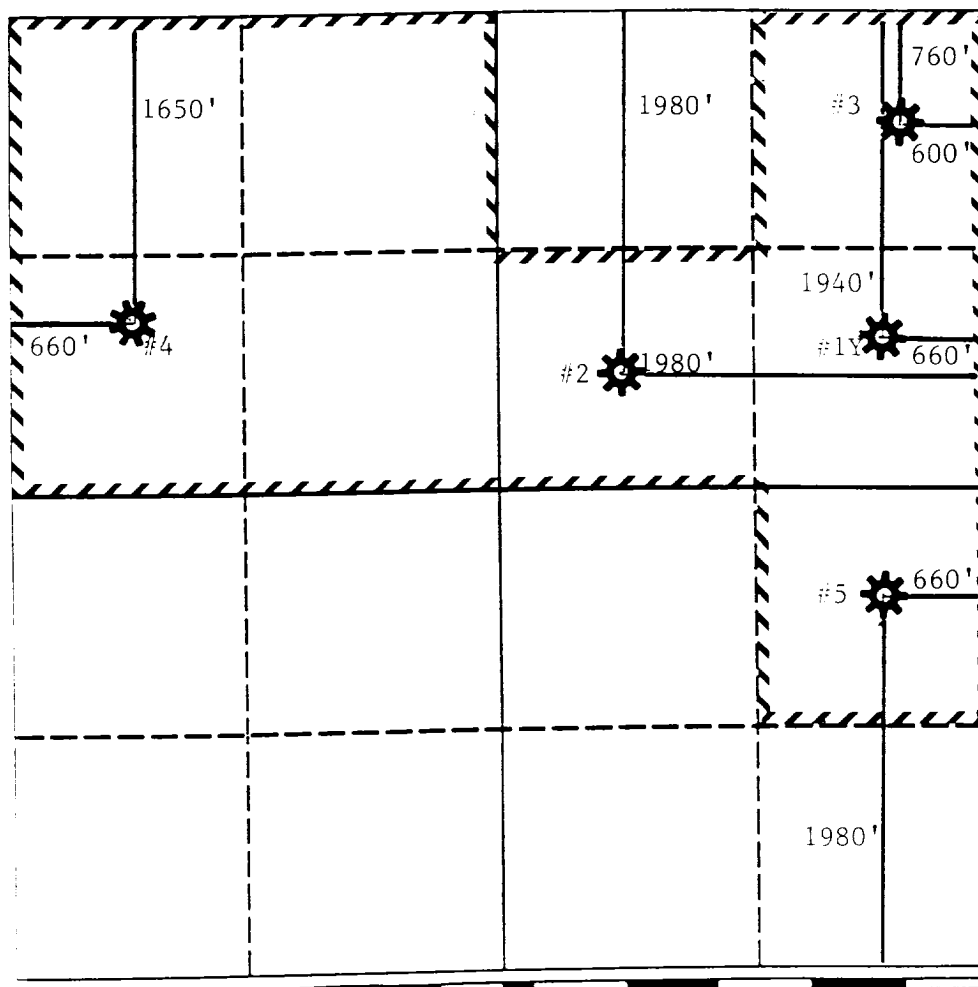
DISTRICT III
1000 Rio Brazos Rd., Aztec, NM 87410

WELL LOCATION AND ACREAGE DEDICATION PLAT

All Distances must be from the outer boundaries of the section

Operator			Lease		Well No.
ARCO OIL AND GAS COMPANY			JOHN P. COMBEST WN		#4
Unit Letter	Section	Township	Range	County	
E	35	T-23S	R-36E	NMPM LEA	
Actual Footage Location of Well:					
1650 feet from the		NORTH	line and	660'	feet from the WEST line
Ground level Elev.	Producing Formation		Pool	Dedicated Acreage:	
3362'	TANSILL/YATES/7-RIVERS		JALMAT	320 Acres	

1. Outline the acreage dedicated to the subject well by colored pencil or hatchure marks on the plat below.
2. If more than one lease is dedicated to the well, outline each and identify the ownership thereof (both as to working interest and royalty).
3. If more than one lease of different ownership is dedicated to the well, have the interest of all owners been consolidated by communitization, unitization, force-pooling, etc.?
☐ Yes ☐ No If answer is "yes" type of consolidation _____
If answer is "no" list the owners and tract descriptions which have actually been consolidated. (Use reverse side of this form if necessary.) _____
No allowable will be assigned to the well until all interests have been consolidated (by communitization, unitization, forced-pooling, or otherwise) or until a non-standard unit, eliminating such interest, has been approved by the Division.



OPERATOR CERTIFICATION

I hereby certify that the information contained herein is true and complete to the best of my knowledge and belief.

Signature
Evelyn E. Gilson
Printed Name
E. E. GILSON
Position
ENGINEERING TECHNICIAN
Company
ARCO OIL AND GAS COMPANY
Date
JUNE 1, 1993

SURVEYOR CERTIFICATION

I hereby certify that the well location shown on this plat was plotted from field notes of actual surveys made by me or under my supervision, and that the same is true and correct to the best of my knowledge and belief.

Date Surveyed
Signature & Seal of Professional Surveyor
Certificate No.

R-36E

NEW MEXICO OIL CONSERVATION COMMISSION
WELL LOCATION AND ACREAGE DEDICATION PLAT

Form C-128
Supersedes C-128
Effective 1-1-65

All distances must be from the outer boundaries of the Section.

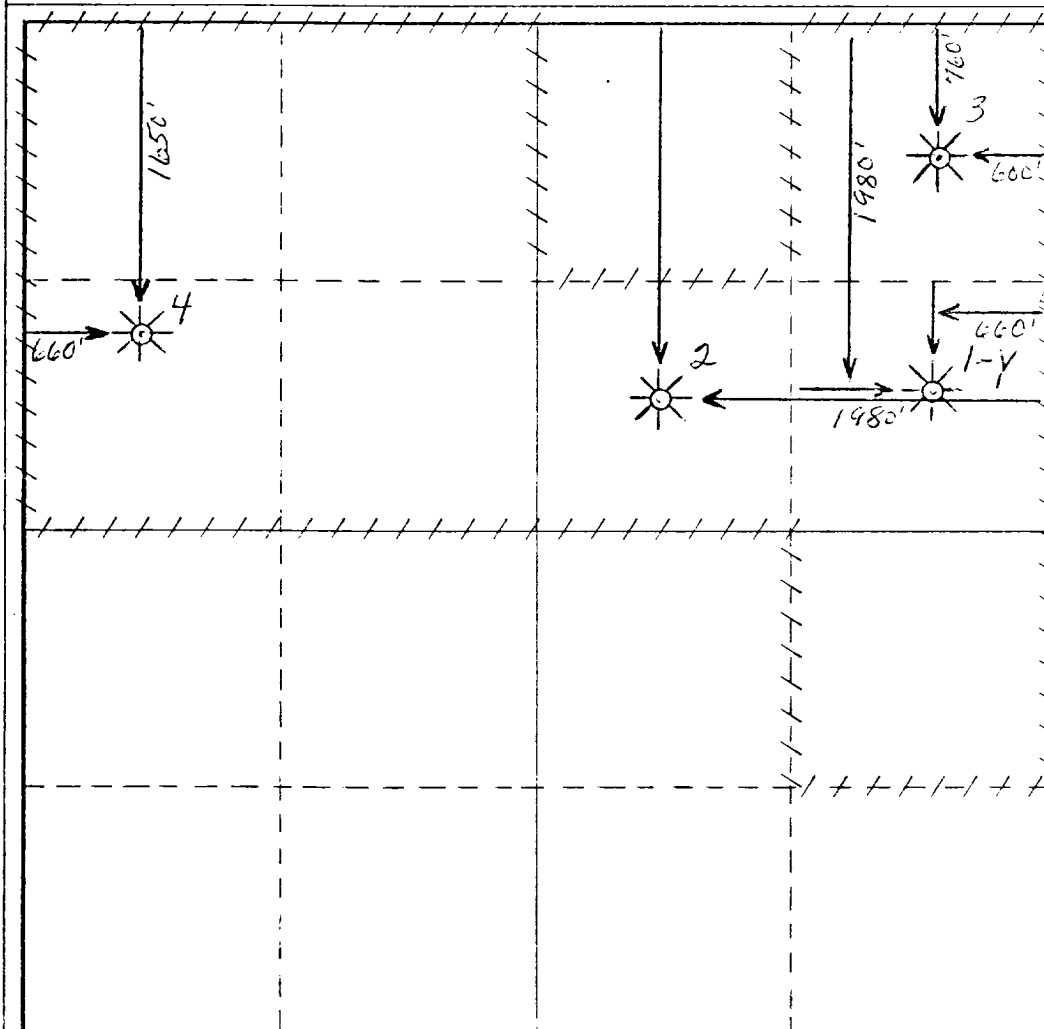
Operator Atlantic Richfield Company			Lease John P. Combest WN			Well No. 4		
Unit Letter E	Section 35	Township 23S		Range 36E	County Lea			
Actual Footage Location of Well: 1650 feet from the North line and 660 feet from the West line								
Ground Level Elev. 3362'	Producing Formation Yates-7Rivers			Pool Jalmat Gas			Dedicated Acreage: 320 Acres	

1. Outline the acreage dedicated to the subject well by colored pencil or hachure marks on the plat below.
2. If more than one lease is dedicated to the well, outline each and identify the ownership thereof (both as to working interest and royalty).
3. If more than one lease of different ownership is dedicated to the well, have the interests of all owners been consolidated by communitization, unitization, force-pooling, etc?

☐ Yes ☐ No If answer is "yes," type of consolidation _____

If answer is "no," list the owners and tract descriptions which have actually been consolidated. (Use reverse side of this form if necessary.) _____

No allowable will be assigned to the well until all interests have been consolidated (by communitization, unitization, forced-pooling, or otherwise) or until a non-standard unit, eliminating such interests, has been approved by the Commission.



CERTIFICATION

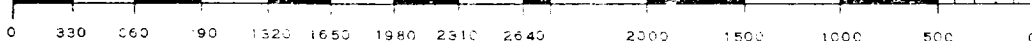
I hereby certify that the information contained herein is true and complete to the best of my knowledge and belief.

Name _____
Position _____
Dist. Drlg. Supt. _____
Company
Atlantic Richfield Company
Date
7/19/77

I hereby certify that the well location shown on this plat was plotted from field notes of actual surveys made by me or under my supervision, and that the same is true and correct to the best of my knowledge and belief.

Date Surveyed _____
Registered Professional Engineer and/or Land Surveyor _____

Certificate No. _____



NEW MEXICO OIL CONSERVATION COMMISSION
WELL LOCATION AND ACREAGE DEDICATION PLAT - AMENDED

Form C-108
 Supersedes C-108
 Effective 1-1-65

All distances must be from the outer boundaries of the Section

Owner: ATLANTIC RICHFIELD COMPANY			Lessee: John P. Combest WN		Well No.: 4
Section: E	Township: 35	Range: 23-S	Meridian: 36-E	Locality: Lea	
Section 1650 North 660 West line					
Acres: 3362' GR	Producing Formation: Yates, 7 Rivers		Pool: Jalmat-Gas		Dedicated Acreage: 320*

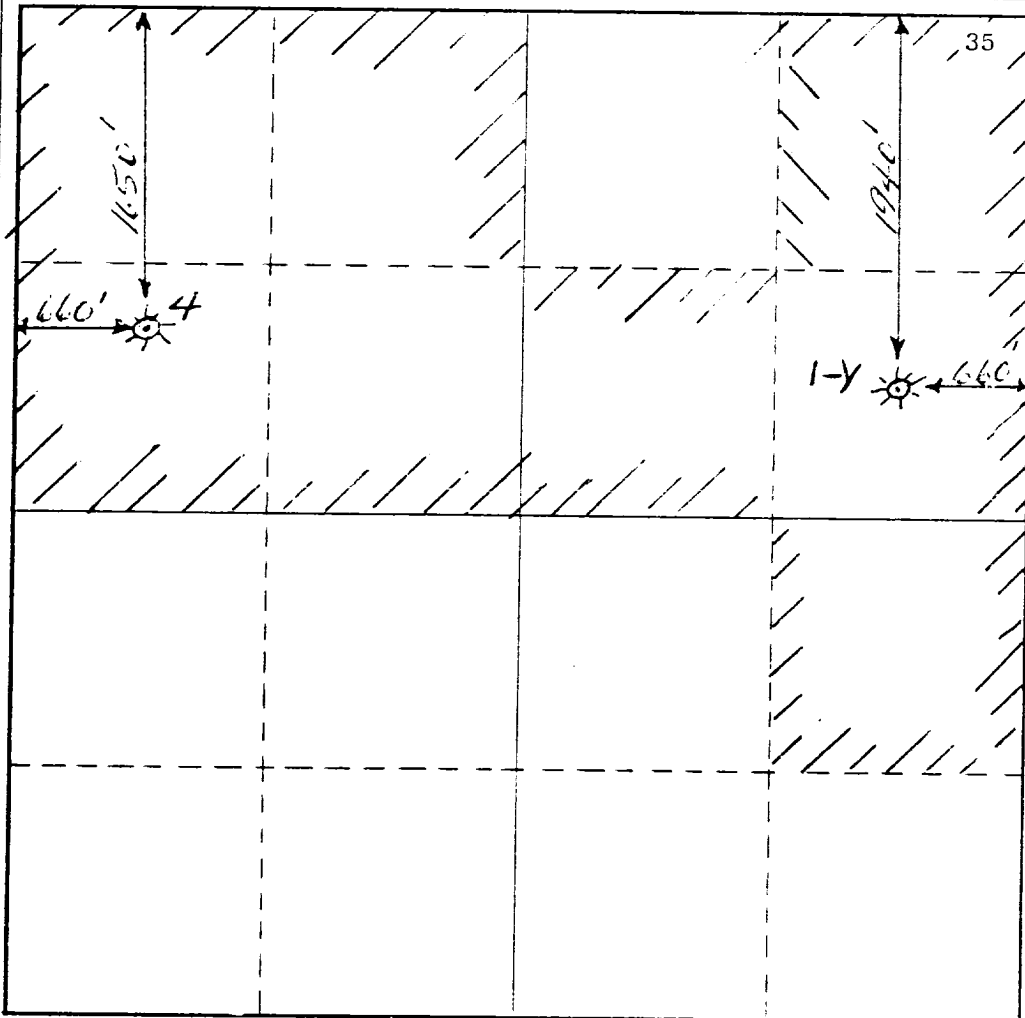
1. Outline the acreage dedicated to the subject well by colored pencil or hachure marks on the plat below.
2. If more than one lease is dedicated to the well, outline each and identify the ownership thereof (both as to working interest and royalty). ***Joint dedication to Wells No. 4 & 1-Y**
3. If more than one lease of different ownership is dedicated to the well, have the interests of all owners been consolidated by communitization, unitization, force-pooling, etc?

☐ Yes ☐ No If answer is "yes," type of consolidation _____

If answer is "no," list the owners and tract descriptions which have actually been consolidated. (Use reverse side of this form if necessary.) _____

No allowable will be assigned to the well until all interests have been consolidated (by communitization, unitization, forced-pooling, or otherwise) or until a non-standard unit, eliminating such interests, has been approved by the Commission.

R-36-E



CERTIFICATION

I hereby certify that the information contained herein is true and complete to the best of my knowledge and belief.

O. D. Bretches

Name
O. D. Bretches

Position
Dist. Drlg. Supervisor

Company
Atlantic Richfield Co.

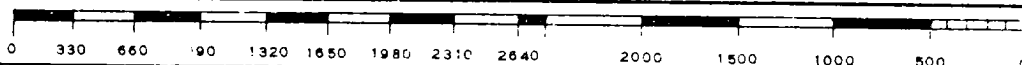
Date
July 25, 1973

I hereby certify that the well location shown on this plat was plotted from field notes of actual surveys made by me or under my supervision, and that the same is true and correct to the best of my knowledge and belief.

Date Surveyed

Registered Professional Engineer and/or Land Surveyor

Certificate No.



F.R. 7-2-73 (Yates-Queen)
8-25-73 AMEND LOCATION: Formerly reported as 1650' FNL,
660' FEL of Sec
7-10-73 Drlg 3285'
7-16-73 TD 3669'; WOC
7-30-73 TD 3669'; Prep Pot
Perf 3039', 3043', 3048', 3057', 3061', 3081',
3085', 3089', 3115', 3118', 3121', 3139', 3143',
3225', 3239', 3299', 3363', 3367' w/18 holes
Acid (3039-3367') 2000 gals
Flwd 908 MCFGPD in 24 hrs thru 1/2" chk, TP 200#,
CP 240#
8-6-73 TD 3669'; WO Pot
8-13-73 TD 3669'; WO Pot
8-21-73 TD 3669'; COMPLETE
LOG TOPS: Anhydrite 1200', Salt 1570', Base
Salt 2884', Seven Rivers 3252'
8-25-73 COMPLETION REPORTED