

UNITED STATES
DEPARTMENT OF THE INTERIOR
GEOLOGICAL SURVEY

APPLICATION FOR PERMIT TO DRILL, DEEPEN, OR PLUG BACK

1a. TYPE OF WORK

DRILL ☒DEEPEN ☐PLUG BACK ☐

b. TYPE OF WELL

OIL
WELL ☒GAS
WELL ☐OTHER ☐SINGLE
ZONE ☒MULTIPLE
ZONE ☐

2. NAME OF OPERATOR

Continental Oil Company

3. ADDRESS OF OPERATOR

Box 460 Hobbs, N. Mexico

4. LOCATION OF WELL (Report location clearly and in accordance with any State requirements.)*

At surface

1980' FNL and 660' FEL of Sec 12

At proposed prod. zone

Same

14. DISTANCE IN MILES AND DIRECTION FROM NEAREST TOWN OR POST OFFICE*

15. DISTANCE FROM PROPOSED*

LOCATION TO NEAREST
PROPERTY OR LEASE LINE, FT.
(Also to nearest drg. unit line, if any)18. DISTANCE FROM PROPOSED LOCATION*
TO NEAREST WELL, DRILLING, COMPLETED,
OR APPLIED FOR, ON THIS LEASE, FT.

21. ELEVATIONS (Show whether DF, RT, GR, etc.)

3570' gr

16. NO. OF ACRES IN LEASE

160

19. PROPOSED DEPTH

5070'

17. NO. OF ACRES ASSIGNED
TO THIS WELL

40

20. ROTARY OR CABLE TOOLS

Rotary

22. APPROX. DATE WORK WILL START*

6-29-73

23.

PROPOSED CASING AND CEMENTING PROGRAM

SIZE OF HOLE	SIZE OF CASING	WEIGHT PER FOOT	SETTING DEPTH	QUANTITY OF CEMENT
12 1/4"	8 5/8" H-40	20#	400'	Circ - 225 sacks
7 7/8"	5 1/2" K-55	14#	5070'	430 sacks

It is proposed to drill a straight hole to a TD of 5070' and complete as an oilwell in the Triplex Delaware Field. Mud Program - 0-400' (8.5-9.5 Spud mud) and 1200'-5070' (9.5-10.5 salt gel). Blowout preventer specifications are attached. Location of flowline will be determined when battery is constructed.

IN ABOVE SPACE DESCRIBE PROPOSED PROGRAM: If proposal is to deepen or plug back, give data on present productive zone and proposed new productive zone. If proposal is to drill or deepen directionally, give pertinent data on subsurface locations and measured and true vertical depths. Give blowout preventer program, if any.

24.

SIGNED

TITLE

Sr. Analyst

DATE

6-27-73

(This space for Federal or State office use)

PERMIT NO.

APPROVAL DATE

APPROVED BY

TITLE

CONDITIONS OF APPROVAL, IF ANY:

APPROVED

JUN 29 1973

ARTHUR R. BROWN
DISTRICT ENGINEER

*See Instructions On Reverse Side

11565-6 File

NEW MEXICO OIL CONSERVATION COMMISSION
WELL LOCATION AND ACREAGE DEDICATION PLAT

Form C-102
Supersedes C-128
Effective 1-1-65

All distances must be from the outer boundaries of the Section

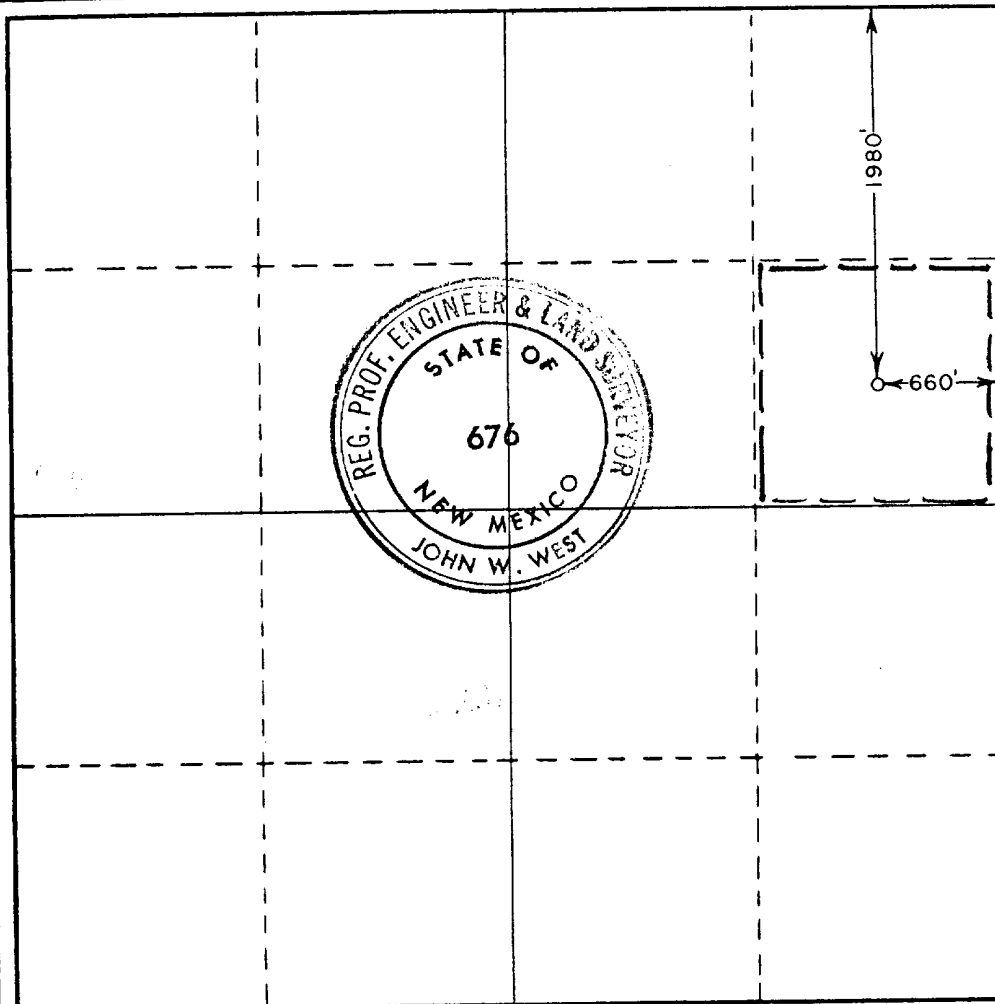
Operator CONTINENTAL OIL COMPANY			Lease WIMBERLY 12		Well No. 2
Unit Letter H	Section 12	Township 24 SOUTH	Range 32 EAST	County LEA	
Actual Footage Location of Well: 1980 feet from the NORTH line and 660 feet from the EAST line					
Ground Level Elev. 3570	Producing Formation Delaware		Pool Triple X Delaware	Dedicated Acreage: 40 Acres	

1. Outline the acreage dedicated to the subject well by colored pencil or hachure marks on the plat below.
2. If more than one lease is dedicated to the well, outline each and identify the ownership thereof (both as to working interest and royalty).
3. If more than one lease of different ownership is dedicated to the well, have the interests of all owners been consolidated by communitization, unitization, force-pooling, etc?

☐ Yes ☐ No If answer is "yes," type of consolidation _____

If answer is "no," list the owners and tract descriptions which have actually been consolidated. (Use reverse side of this form if necessary.) _____

No allowable will be assigned to the well until all interests have been consolidated (by communitization, unitization, forced-pooling, or otherwise) or until a non-standard unit, eliminating such interests, has been approved by the Commission.



CERTIFICATION

I hereby certify that the information contained herein is true and complete to the best of my knowledge and belief.

Name Thurston
Position Dr. Analyst
Company Continental Oil Co.
Date June 27, 1973

I hereby certify that the well location shown on this plat was plotted from field notes of actual surveys made by me or under my supervision, and that the same is true and correct to the best of my knowledge and belief.

Date Surveyed
MAY 4, 1973

Registered Professional Engineer and/or Land Surveyor

John W. West
Certificate No. **676**

ENVIRONMENT CONSIDERATION STATEMENT

Application to Drill on Federal Leases

The attached plat shows the existing roads and, by red coloring, the proposed roads to service the proposed well. The plat also shows the location of tank battery and flowlines. There are no camps or airstrips contemplated to serve this lease.

Litter, such as paper, scrap iron, etc., will be picked up and hauled away. Salt water and other undesirable liquids will be picked up for disposal in approved disposal wells. Mud, drill cuttings, and other inert material will be disposed of by burying in the reserve pit when it is abandoned and the surface restored to level condition.

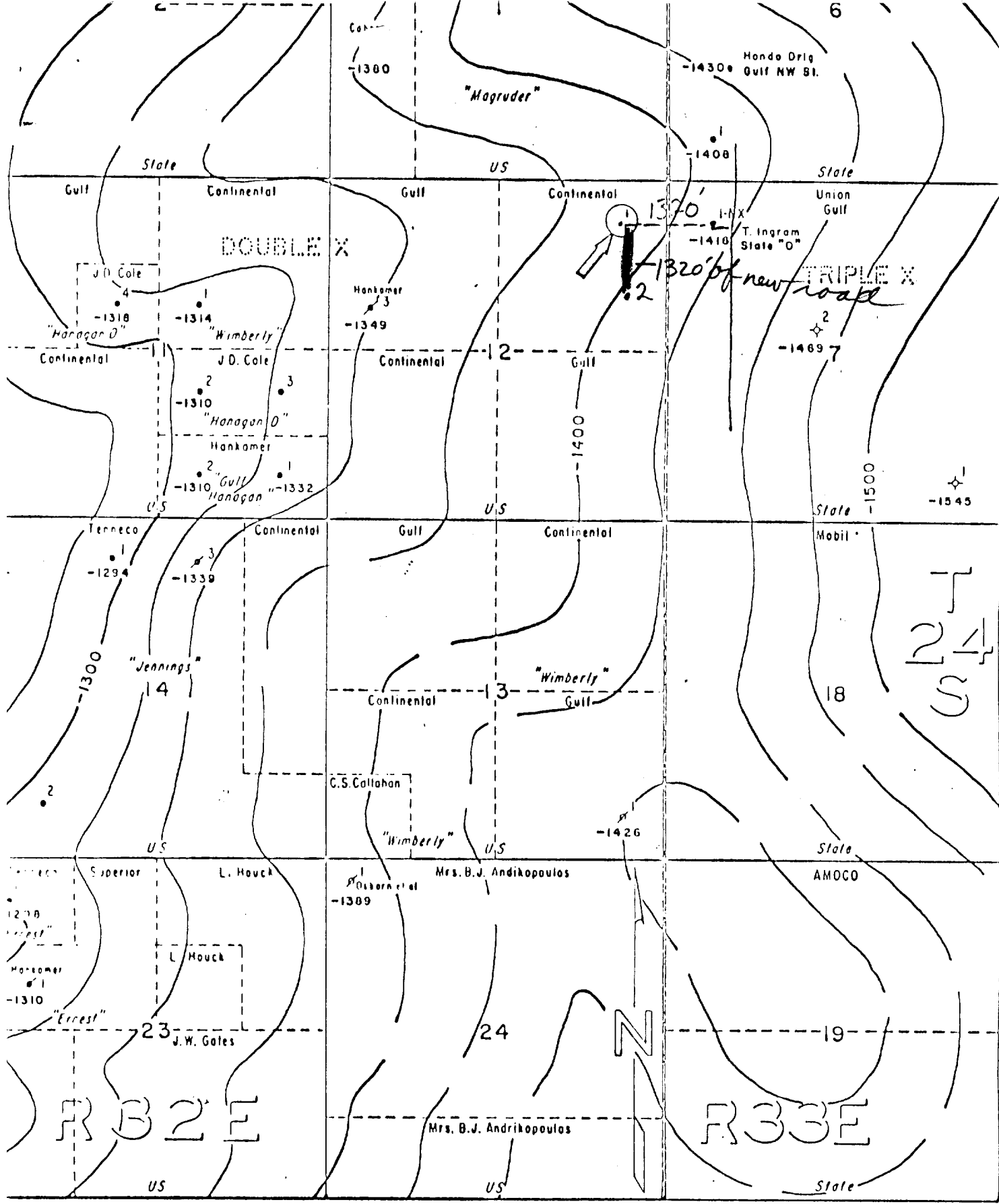
The second plat shows the proposed layout of the drilling rig in relation to the pad and shows the location of mud tanks, reserve pits, pipe racks, etc.

(X)

Water will be hauled to the location.

()

A flowline will be laid from the battery to the well and will be used to furnish water during drilling operations and then will be used to handle the wells' production following completion.



CONOCO

PRODUCTION DEPARTMENT

HOBBS DIVISION

LEA COUNTY, NEW MEXICO

TRIPLE X DELAWARE

RAMSEY SAND STRUCTURE

CI: 25'

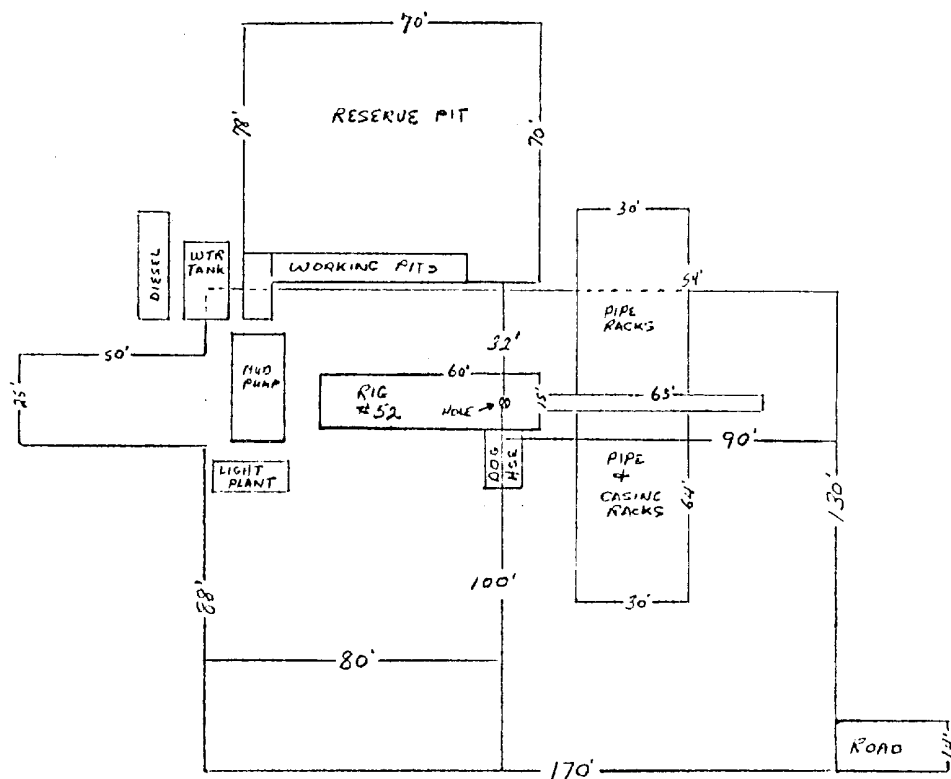
SCALE

0 1000' 2000'

NGC 3-73

erw

CACTUS DRILLING CO.
RIG # 52



LOCATION:

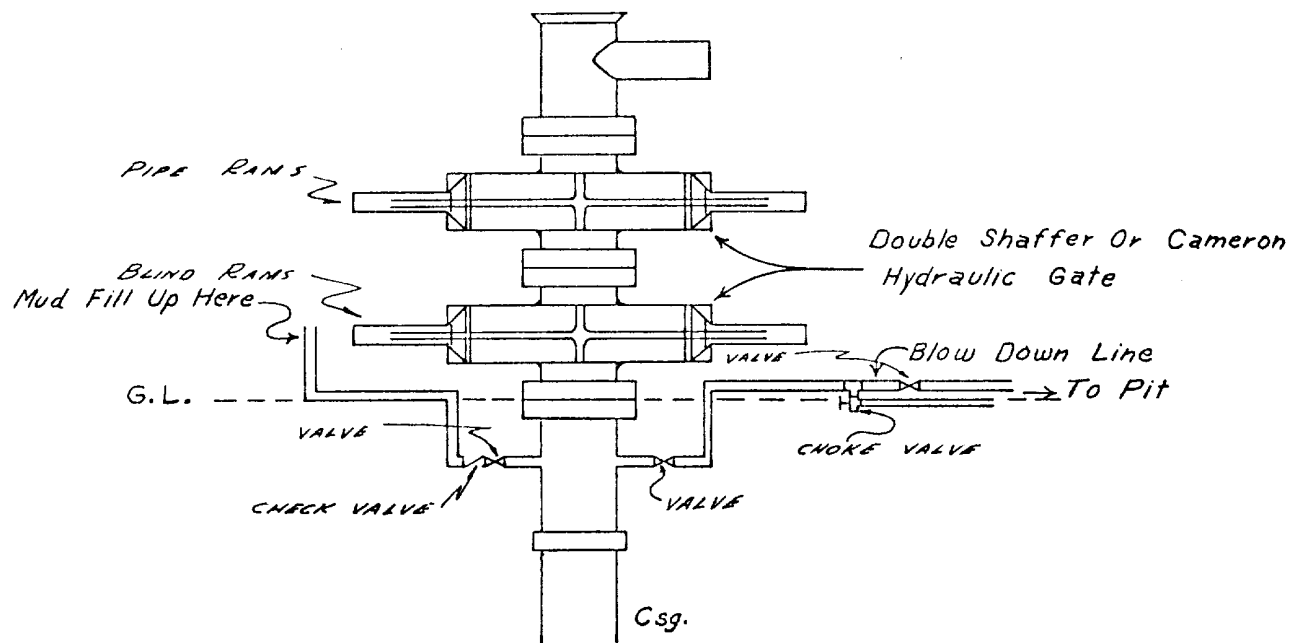
130' - N to S
170' - E to W

HOLE: 30' FNL
80' FWL
100' FSL
90' FEL

25' X 50' STINGER ON WEST SIDE
OF LOCATION FOR TRAILER MTD RIG.

3/16 INCH = 10 foot

CONTINENTAL OIL COMPANY
Blow-out Preventer Specifications



NOTE:

Manual and hydraulic controls with closing unit no less than 75' from well head.