

NEW MEXICO OIL CONSERVATION COMMISSION
WELL LOCATION AND ACREAGE DEDICATION PLAT

Form O-1-2
Supersedes O-1-1
Effective 1-1-65

All distances must be from the outer boundaries of the Section

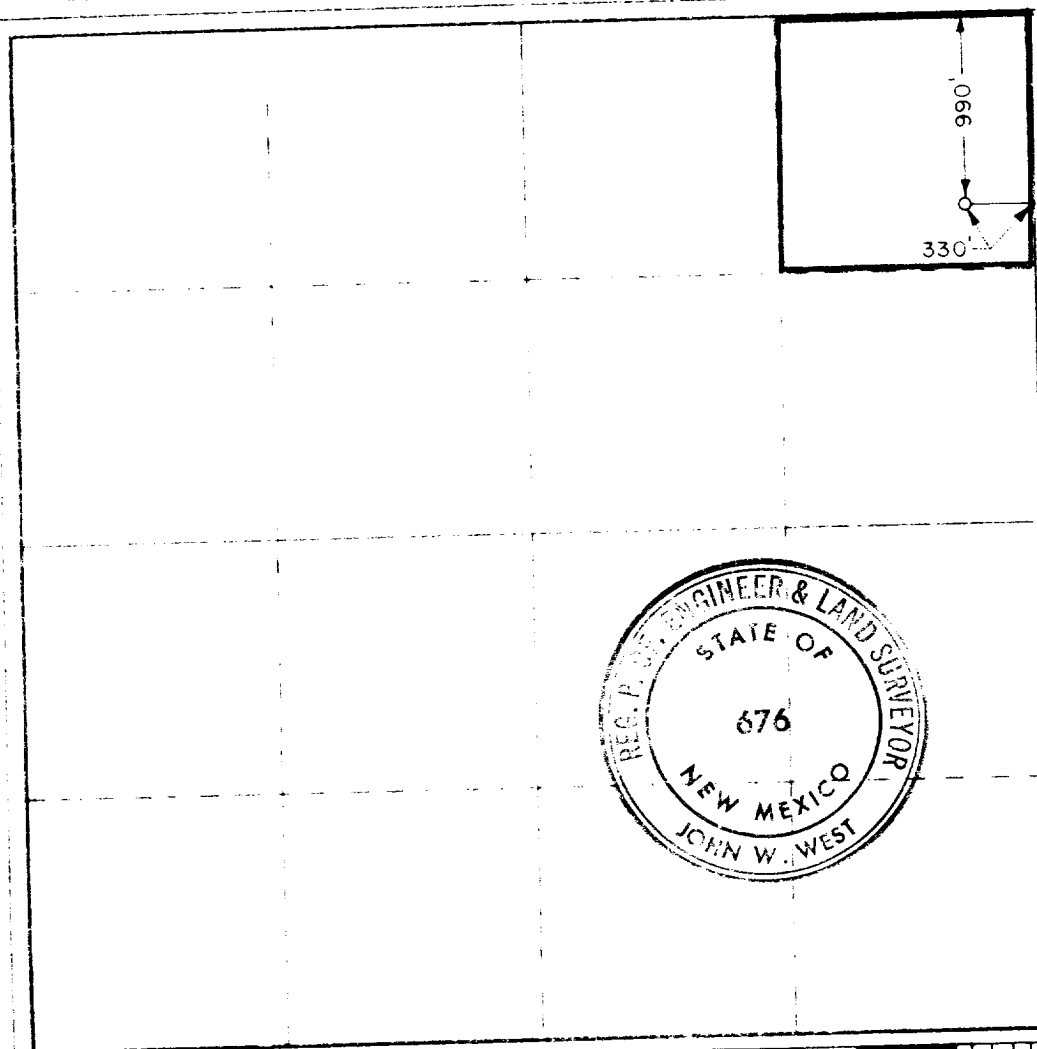
Operator SKELLY OIL COMPANY			Lease ELLEN SIMS A		Well No. 2
Plot Letter A	Section 3	Township 23 SOUTH	Range 37 EAST	County LEA	
Actual Portage Location of Well: 990 feet from the NORTH line and 330 feet from the EAST line					
Circumferential Elev. 3302.9	Producing Formation Queen (Penrose Sand)		Fracture Langlie-Mattix		Dedicated Acreage 40 44.77

1. Outline the acreage dedicated to the subject well by colored pencil or hachure marks on the plat below.
2. If more than one lease is dedicated to the well, outline each and identify the ownership thereof (both as to working interest and royalty)
3. If more than one lease of different ownership is dedicated to the well, have the interests of all owners been consolidated by communitization, unitization, force-pooling, etc?

☐ Yes ☐ No If answer is "yes," type of consolidation _____

If answer is "no," list the owners and tract descriptions which have actually been consolidated. (Use reverse side of this form if necessary.) _____

No allowable will be assigned to the well until all interests have been consolidated (by communitization, unitization, force-pooling, or otherwise) or until a non-standard unit, eliminating such interests, has been approved by the Commission.



CERTIFICATION

I hereby certify that the information contained herein is true and complete to the best of my knowledge and belief.

Name *D. R. Crow*
D. R. Crow (signed) D. R. Crow

Lead Clerk

Company
Skelly Oil Company

Date
November 12, 1973

I hereby certify that the well location shown on this plat was plotted from field notes of actual surveys made by me or under my supervision and that the same is true and correct to the best of my knowledge and belief.

Date Surveyed
NOVEMBER 10, 1973

Registered Professional Engineer and Land Surveyor

John W. West
Certificate No. **676**

