

UNITED STATES  
DEPARTMENT OF THE INTERIOR  
GEOLOGICAL SURVEY

## APPLICATION FOR PERMIT TO DRILL, DEEPEN, OR PLUG BACK

## 1a. TYPE OF WORK

DRILL ☒DEEPEN ☐PLUG BACK ☐

## b. TYPE OF WELL

OIL  
WELL ☒GAS  
WELL ☐OTHER ☐SINGLE  
ZONE ☐MULTIPLE  
ZONE ☐

## 2. NAME OF OPERATOR

McCLELLAN OIL CORPORATION

## 3. ADDRESS OF OPERATOR

P. O. Box 848, Roswell, New Mexico 88201

## 4. LOCATION OF WELL (Report location clearly and in accordance with any State requirements.)\*

At surface

1980' FSL &amp; 990' FEL SECTION 29

At proposed prod. zone

## 14. DISTANCE IN MILES AND DIRECTION FROM NEAREST TOWN OR POST OFFICE\*

9 MILES Southeast of JAL, New Mexico

## 15. DISTANCE FROM PROPOSED\*

LOCATION TO NEAREST

PROPERTY OR LEASE LINE, FT.

(Also to nearest drlg. unit line, if any)

990'

## 16. NO. OF ACRES IN LEASE

2008

## 17. NO. OF ACRES ASSIGNED

TO THIS WELL

40

## 18. DISTANCE FROM PROPOSED LOCATION\*

TO NEAREST WELL, DRILLING, COMPLETED,

OR APPLIED FOR, ON THIS LEASE, FT.

1000' FROM DRY HOLE

3000'

## 19. PROPOSED DEPTH

## 20. ROTARY OR CABLE TOOLS

ROTARY

## 21. ELEVATIONS (Show whether DF, RT, GR, etc.)

2958.2 GR

## 22. APPROX. DATE WORK WILL START\*

MARCH 28, 1974

## 23.

## PROPOSED CASING AND CEMENTING PROGRAM

SIZE OF HOLE	SIZE OF CASING	WEIGHT PER FOOT	SETTING DEPTH	QUANTITY OF CEMENT
12 1/4"	8-5/8"	24#	300'	175 SX (CIRC)
7-7/8"	5-1/2"	15#	3000'	500 SX

PROPOSE TO DRILL 12 1/4" HOLE TO 300' - USING WATER AND NATIVE MUD. WILL SET AND CEMENT 8-5/8", 24# CASING. CEMENT WILL CIRCULATE. WILL THEN DRILL 7-7/8" HOLE TO TOTAL DEPTH. WILL DRILL STEM TEST YATES, IF INDICATED, AND RUN ELECTRIC LOGS. WILL USE BRINE WATER MUD. CONTRACTOR WILL FURNISH SERIES 900 CAMERON HYDRAULIC BLOWOUT PREVENTER WITH DOUBLE RAMS. BLOWOUT PREVENTER WILL BE TESTED EACH TOUR. IF PRODUCTION IS ACHIEVED WILL RUN 5 1/2", 15#, J-55, ST&C CASING AND CEMENT WITH SUFFICIENT CEMENT TO CARRY CEMENT 300', ABOVE THE TOP OF THE PAY ZONE.

600'

IN ABOVE SPACE DESCRIBE PROPOSED PROGRAM: If proposal is to deepen or plug back, give data on present productive zone and proposed new productive zone. If proposal is to drill or deepen directionally, give pertinent data on subsurface locations and measured and true vertical depths. Give blowout preventer program, if any.

## 24.

SIGNED

*John W. Stewart*

TITLE

AGENT

DATE

MARCH 8, 1974

(This space for Federal or State office use)

PERMIT NO.

APPROVAL DATE

APPROVED BY

TITLE

CONDITIONS OF APPROVAL, IF ANY:

\*See Instructions On Reverse Side

**NEW MEXICO OIL CONSERVATION COMMISSION  
WELL LOCATION AND ACREAGE DEDICATION PLAN**

Form C-102  
Supersedes C-128  
Effective 1-1-65

All distances must be from the outer boundaries of the Section.

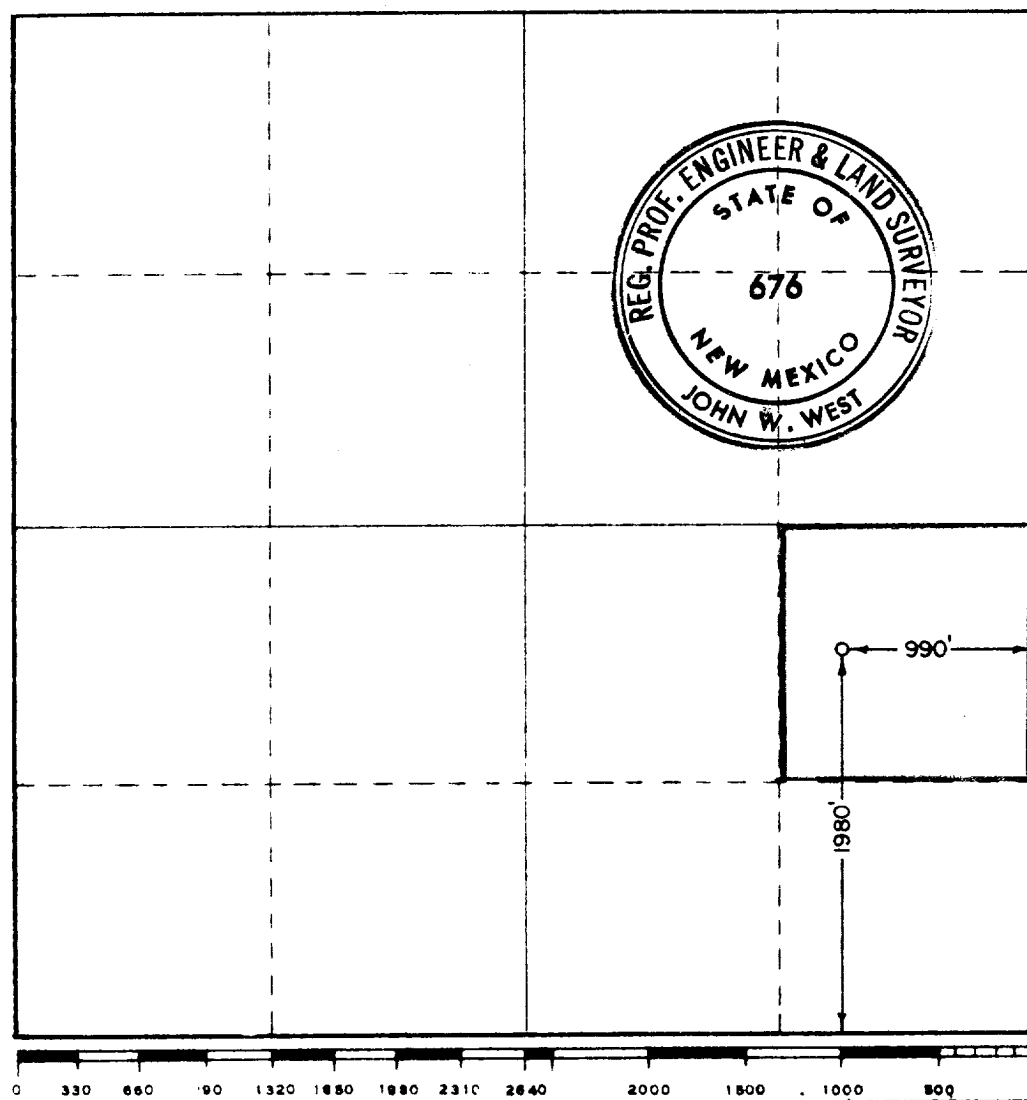
Operator <b>McCLELLAND OIL CORPORATION</b>			Lease <b>TIP FEDERAL</b>		Well No. <b>1</b>
Unit Letter <b>I</b>	Section <b>29</b>	Township <b>26 SOUTH</b>	Range <b>38 EAST</b>	County <b>LEA</b>	
Actual Portage Location of Well: <div style="display: flex; justify-content: space-between;"> <span><b>1980</b> feet from the <b>SOUTH</b> line and</span> <span><b>990</b> feet from the <b>EAST</b> line</span> </div>					
Ground Level Elev. <b>2958.2</b>	Producing Formation <b>YATES</b>	Pool <b>UNDEVELOPED WC</b>		Dedicated Acreage: <b>40</b> Acres	

1. Outline the acreage dedicated to the subject well by colored pencil or hatchure marks on the plat below.
2. If more than one lease is dedicated to the well, outline each and identify the ownership thereof (both as to working interest and royalty).
3. If more than one lease of different ownership is dedicated to the well, have the interests of all owners been consolidated by communitization, unitization, force-pooling, etc?

☐ Yes ☐ No If answer is "yes," type of consolidation \_\_\_\_\_

If answer is "no," list the owners and tract descriptions which have actually been consolidated. (Use reverse side of this form if necessary.) \_\_\_\_\_

No allowable will be assigned to the well until all interests have been consolidated (by communitization, unitization, forced-pooling, or otherwise) or until a non-standard unit, eliminating such interests, has been approved by the Commission.



**CERTIFICATION**

I hereby certify that the information contained herein is true and complete to the best of my knowledge and belief.

*Hal M. Stierwalt*

Name  
**HAL M. STIERWALT**

Position  
**AGENT**

Company  
**McCLELLAN OIL CORPORATION**

Date  
**MARCH 8, 1974**

I hereby certify that the well location shown on this plat was plotted from field notes of actual surveys made by me or under my supervision, and that the same is true and correct to the best of my knowledge and belief.

Date Surveyed  
**MARCH 2, 1974**

Registered Professional Engineer and/or Land Surveyor

*John W. West*

Certificate No. **676**