

TP (Yates-Seven Rivers) Perfs 2945-3401' F 300 MCEGPD. Pot based on 24 hr test thru 3/4' ckb; CP 175#, TP 100#

F.R. 4-14-75
(Seven Rivers)
4-28-75 Drlg 1230'
5-5-75 ID 3550'; Circ
5-8-75 TD 3553'; PBD 3551'; Prep Acid
Perfs (Yates-Seven Rivers) @ 2945', 2953', 2962',
2968', 2983', 2991', 2999', 3004', 3019', 3026',
3043', 3049', 3068', 3076', 3121', 3126', 3137',
3143', 3148', 3201', 3206', 3360', 3365', 3390',
3395', 3401' w/l SPI
5-19-75 ID 3553'; PBD 3551'; Tstg
Acid (2945-3401') 3650 gals
Frac (2945-3401') 20,000 gals wtr + 45,000# sd
Flwd 300 MCFGPD (2945-3401')
5-23-75 ID 3553'; PBD 3551'; SI WO Gas Conn
6-9-75 ID 3553'; PBD 3551'; Complete

LEA
ATLANTIC RICHFIELD CO.

Jalmar
4 Toby, G. W. WN Gas Com.
Sec 12, T24S, R36E

NM
Page #2

6-9-75

Continued

LOG TOPS: Anhydrite 1170', Yates 2940', Seven
Rivers 3152', Queen 3533'

6-14-75

COMPLETION ISSUED

6-2-18 NM

NEW MEXICO OIL CONSERVATION COMMISSION
WELL LOCATION AND ACREAGE DEDICATION PLAT

Form O-1
Revised 6-128
Effective 1-1-65

All distances must be from the outer boundaries of the Section.

Atlantic Richfield Company			Lease G. W. Toby WN Gas Unit		Well No. 4
Tract Letter I	Section 12	Township 24S	Range 36E	County Lea	
Actual Footage Location of Well:					
1880 feet from the South line and		760 feet from the East line			
Ground Level Elev.	Producing Formation Yates & Seven Rivers		Pool Jalmat Gas		Dedicated Acreage: 320 Acres

- Outline the acreage dedicated to the subject well by colored pencil or hatchure marks on the plat below.
- If more than one lease is dedicated to the well, outline each and identify the ownership thereof (both as to working interest and royalty).
- If more than one lease of different ownership is dedicated to the well, have the interests of all owners been consolidated by communitization, unitization, force-pooling, etc?

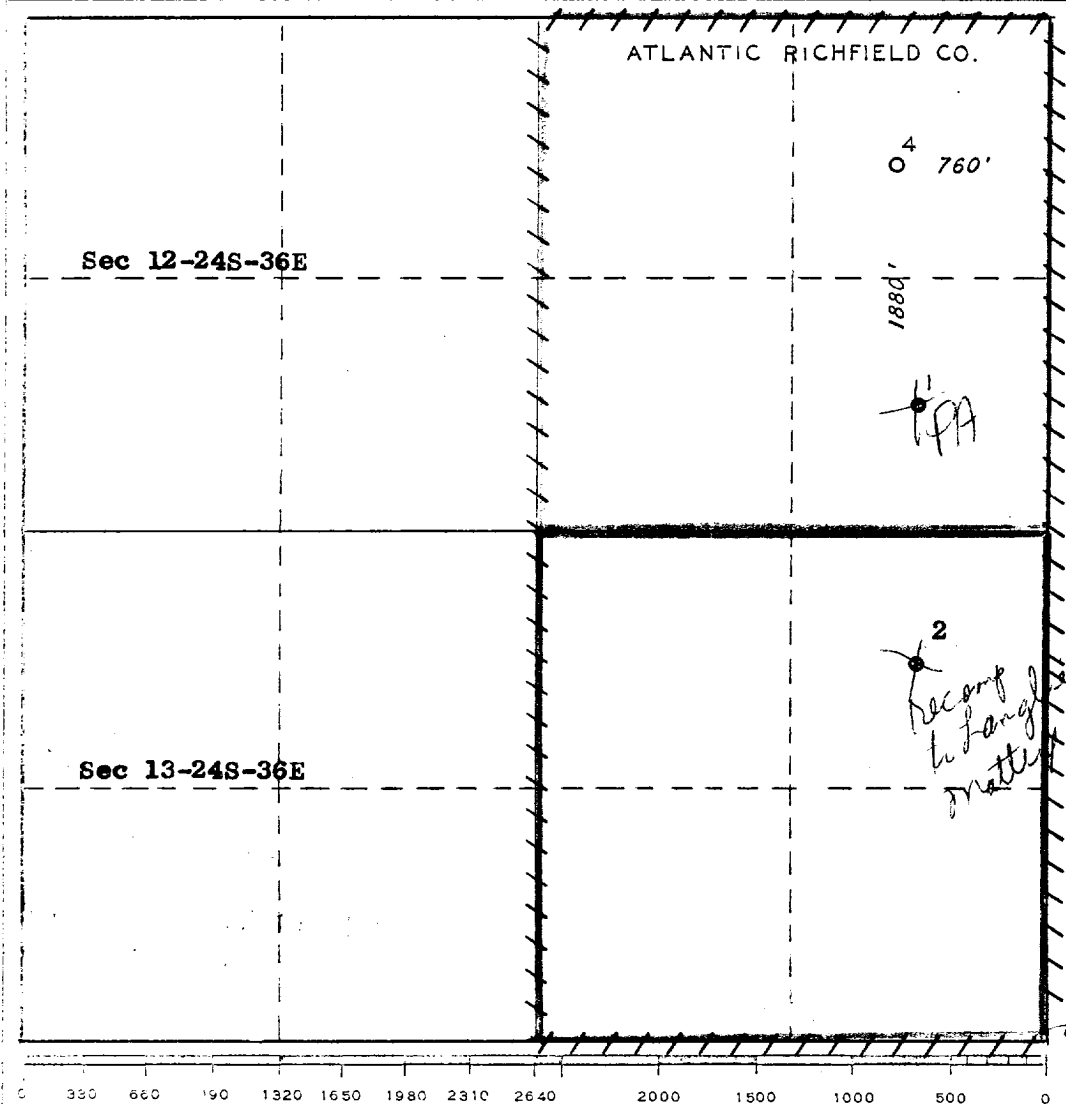
Pooled by Lease Amendment as to

☒ Yes ☐ No If answer is "yes," type of consolidation Jalmat Gas only

If answer is "no," list the owners and tract descriptions which have actually been consolidated. (Use reverse side of this form if necessary.)

No allowable will be assigned to the well until all interests have been consolidated (by communitization, unitization, forced-pooling, or otherwise) or until a non-standard unit, eliminating such interests, has been approved by the Commission.

R 36 E



CERTIFICATION

I hereby certify that the information contained herein is true and complete to the best of my knowledge and belief.

Name Ray Knott
Position Dist. Drlg. Supv.
Company Atlantic Richfield Company
Date 4/9/75

I hereby certify that the well location shown on this plat was plotted from field notes of actual surveys made by me or under my supervision, and that the same is true and correct to the best of my knowledge and belief.

Date Surveyed APRIL 2, 1974

Registered Professional Engineer and/or Land Surveyor

[Signature]
Certificate No. 648

173

RECEIVED

APR 9 1975

OIL CONSERVATION COMM.
HOBBS, N. M.