

UNITED STATES
DEPARTMENT OF THE INTERIOR
GEOLOGICAL SURVEY

APPLICATION FOR PERMIT TO DRILL, DEEPEN, OR PLUG BACK

1a. TYPE OF WORK

DRILL ☒DEEPEN ☐PLUG BACK ☐

b. TYPE OF WELL

OIL
WELL ☒GAS
WELL ☐

OTHER

SINGLE
ZONE ☒MULTIPLE
ZONE ☐

2. NAME OF OPERATOR

CONTINENTAL OIL COMPANY

3. ADDRESS OF OPERATOR

Box 460, Hobbs, N.M. 88240

4. LOCATION OF WELL (Report location clearly and in accordance with any State requirements.)*

At surface

2310' FSL & 2310' FWL of Sec. 30

At proposed prod. zone

14. DISTANCE IN MILES AND DIRECTION FROM NEAREST TOWN OR POST OFFICE*

15. DISTANCE FROM PROPOSED*

LOCATION TO NEAREST
PROPERTY OR LEASE LINE, FT.
(Also to nearest drlg. unit line, if any)

18. DISTANCE FROM PROPOSED LOCATION*

TO NEAREST WELL, DRILLING, COMPLETED,
OR APPLIED FOR, ON THIS LEASE, FT.

21. ELEVATIONS (Show whether DF, RT, GR, etc.)

3135' GR.

23.

PROPOSED CASING AND CEMENTING PROGRAM

SIZE OF HOLE	SIZE OF CASING	WEIGHT PER FOOT	SETTING DEPTH	QUANTITY OF CEMENT
12 1/4"	9 5/8"	32.30 #	1180'	500 SX. - Circ.
8 3/4"	7"	20.0 #	4450'	300 SX.
6 1/4"	4 1/2" LINER	10.5 #	4350'-5900'	175 SX.

IT IS PROPOSED TO DRILL A STRAIGHT HOLE TO A T.D. OF 5900' & TEST THE CHERRY CANYON. IF PRODUCTION IS NOT ESTABLISHED, PLUG BACK & COMPLETE IN THE NORTH MASON DELAWARE.

MUD PROGRAM: 0-1180', FRESH WATER; 1180-4450', SALT GEL, 9.0-10.0 #; 4450-5900', FRESH WTR. GEL, 8.5-8.9 #
SEE ATTACHED FOR B.O.P. PROGRAM.
SEE ATTACHED PROPOSED WELL PLAN FOR FORMATION TOPS, LOGGING, ETC.

IN ABOVE SPACE DESCRIBE PROPOSED PROGRAM: If proposal is to deepen or plug back, give data on present productive zone and proposed new productive zone. If proposal is to drill or deepen directionally, give pertinent data on subsurface locations and measured and true vertical depths. Give blowout preventer program, if any.

24.

SIGNED

Wm. H. Tuttle

TITLE

ADMIN. SUPV.

DATE

7-27-76

(This space for Federal or State office use)

PERMIT NO.

12-14-76

APPROVAL DATE

APPROVED BY

CONDITIONS OF APPROVAL, IF ANY:

TITLE

SEE ATTACHED
CONDITIONS OF APPROVAL

APPROVED
AS AMENDED

SEP 14 1976

BERNARD MOROZ
ACTING DISTRICT ENGINEER

*See Instructions On Reverse Side

USGS (6), FILE

NEW MEXICO OIL CONSERVATION COMMISSION
WELL LOCATION AND ACREAGE DEDICATION PLAN

Form C-102
Supersedes C-128
Effective 1-1-65

All distances must be from the outer boundaries of the Section

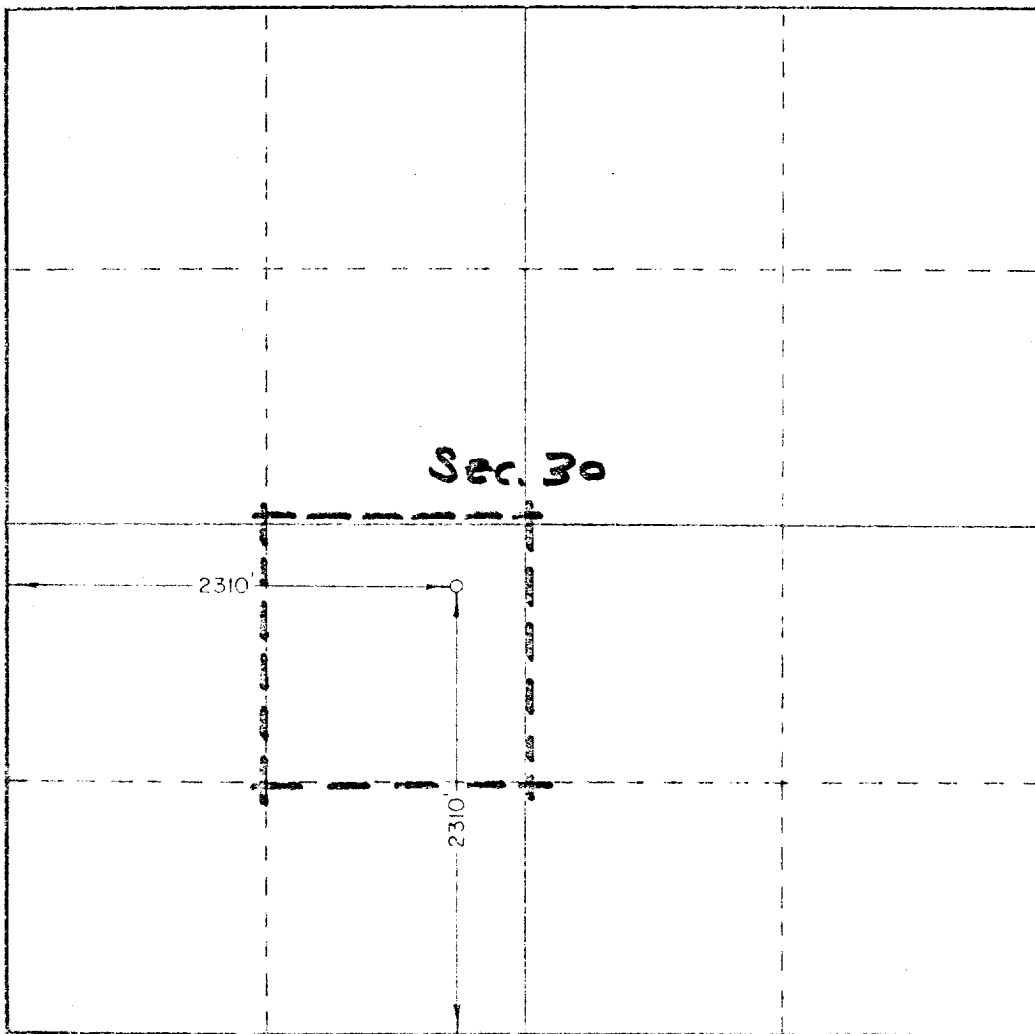
Operator Continental Oil Company		Lease Russell 30 Federal		Well No. 8
Unit Letter K	Section 30	Township 26 South	Range 32 East	County Lea
Actual Well Location of Well:				
2310	feet from the	South	line and	2310 feet from the West line
Ground Elev. Elev. 3135.1	Producing Formation CHERRY CANYON WILDCAT		Dedicated Acreage: 40 Acres	

1. Outline the acreage dedicated to the subject well by colored pencil or hachure marks on the plat below.
2. If more than one lease is dedicated to the well, outline each and identify the ownership thereof (both as to working interest and royalty).
3. If more than one lease of different ownership is dedicated to the well, have the interests of all owners been consolidated by communitization, unitization, force-pooling, etc?

☐ Yes ☐ No If answer is "yes," type of consolidation _____

If answer is "no," list the owners and tract descriptions which have actually been consolidated. (Use reverse side of this form if necessary.) _____

No allowable will be assigned to the well until all interests have been consolidated (by communitization, unitization, forced-pooling, or otherwise) or until a non-standard unit, eliminating such interests, has been approved by the Commission.

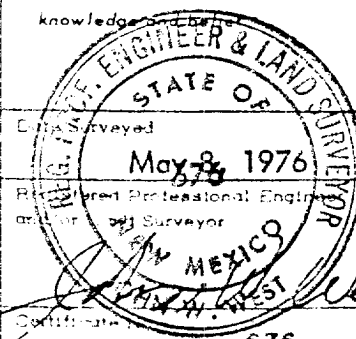


CERTIFICATION

I hereby certify that the information contained herein is true and complete to the best of my knowledge and belief.

Name Wm. A. Butterfield
Position ADMIN. SUPERVISOR
Company CONTINENTAL OIL CO.
Date JULY 27, 1976

I hereby certify that the well location shown on this plat was plotted from field notes of actual surveys made by me or under my supervision, and that the same is true and correct to the best of my knowledge and belief.



Date Surveyed May 8, 1976

By J. W. West Professional Engineer and/or Surveyor

676

PROPOSED WELL PLAN

Russell 30 No. 8

Lea County, New Me 20

Well Name 2310 FS & WL
Location: Sec. 30-26S-32E

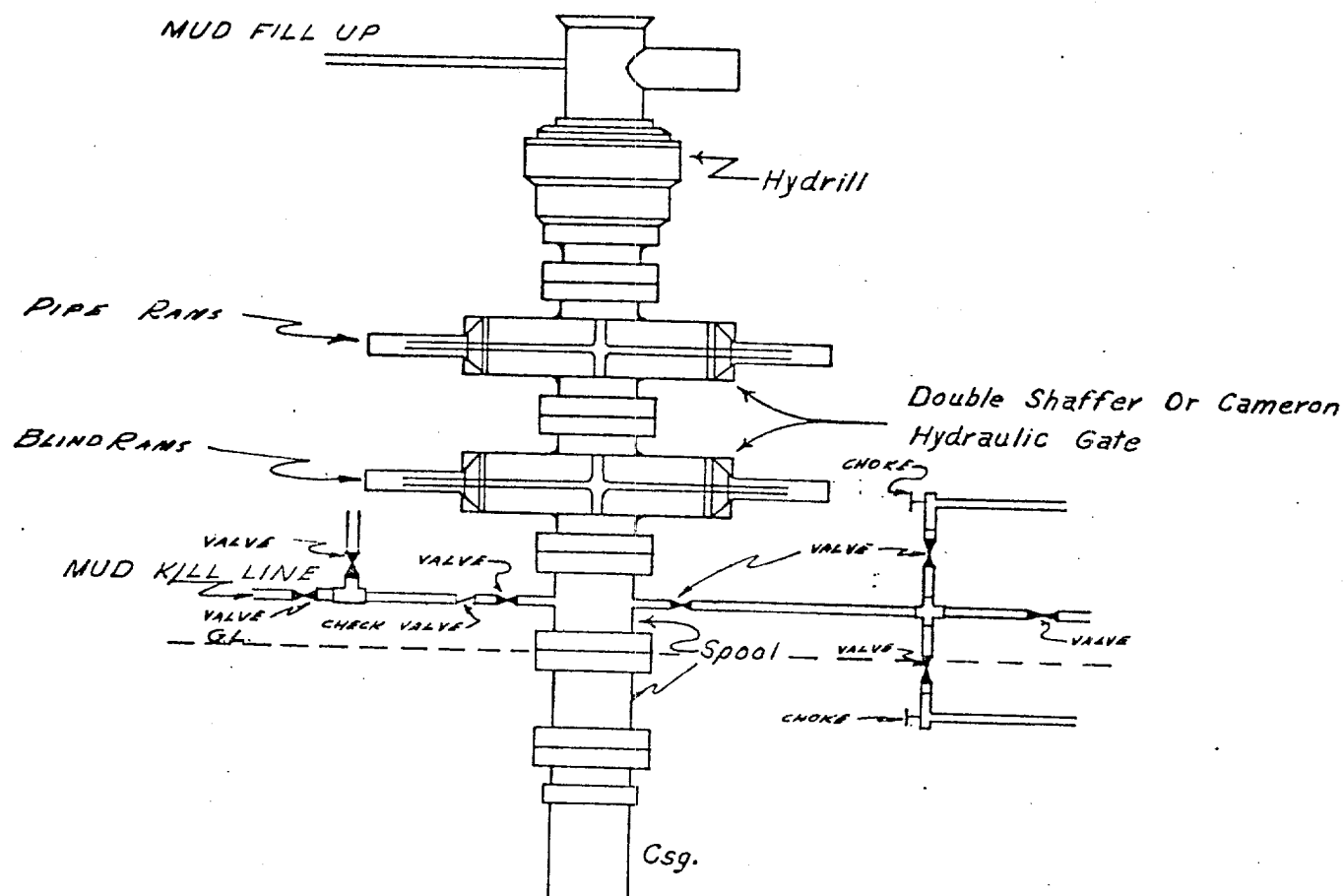
County & State

Elev: 3138 est. grd. 3149 est. DF

[illegible]

CONTINENTAL OIL COMPANY
Blow-out Preventer Specifications

Russell 30 Federal No. 8



NOTE:

Manual and Hydraulic controls with closing unit no less than 75' from well head.
Remote controls on rig floor.

*DUE TO SUBSTRUCTURE CLEARANCE,
HYDRILL MAY OR MAY NOT BE USED.*

U. S. GEOLOGICAL SURVEY
P. O. Box 1157
Hobbs, New Mexico 88240

HOBBS DISTRICT

Continental Oil Company
No. 8 Russell 30 Federal
NE1/4 Sec. 30-26S-32E
2310' S&W

Above Data Required on Well Sign

CONDITIONS OF APPROVAL

1. Drilling operations authorized are subject to the attached sheet for general requirements for drilling and producing operations.
2. Notify this office (telephone (505) 393-3612) when the well is spudded and in sufficient time for a representative to witness cementing operations.
3. Immediate notice is required of all blowouts, fires, spills, and accidents involving life-threatening injuries or loss of life.
4. Secure prior approval before changing the approved drilling program or commencing plugging operations, plug-back work, casing repair work, or corrective cementing operations.
5. Blowout prevention equipment is to be installed, tested, and in working order before drilling below the surface casing and shall be maintained ready for use until drilling operations are completed.
6. A kill-line is to be properly installed and is not to be used as a fill-up line.
7. Blowout preventers are to have proper casing rams when running casing.
8. Drill string safety valve(s) to fit all pipe in the drill string to be maintained on the rig floor while drilling operations are in progress.
9. Blowout prevention drills are to be conducted as necessary to assure that equipment is operational and that each crew is properly trained to carry out emergency duties. All BOP tests and drills are to be recorded on the driller's log.
10. If the well is to be plugged back, secure prior approval of plugs to be placed.
11. If, during operations, the operator or any person working in his behalf, discover any historic or prehistoric ruin, monument or site, or any object of antiquity subject to the Antiquities Act of June 8, 1906, (34 Stat. 225, 16 U.S.C. Secs. 431-433), and 43 CFR Part 3, then work will be suspended and the discovery promptly reported to the District Manager. The Bureau will then take such action as required under the Act and regulations thereunder. When directed by the District Manager, the operator will obtain, at his expense, a qualified archeologist to examine and, if necessary, excavate or gather such ruins or objects.

12. All access roads constructed in conjunction with the drilling permit should be limited to 12 feet in width, along with turnouts. If well is a producer, all roads will be adequately drained to control runoff and soil erosion. Drainage facilities may include ditches, water bars, culverts and/or any other measure deemed necessary by the responsible BLM representative.
13. Materials removed during construction must be disposed of in such a manner that it does not detract from the aesthetics and does not accelerate erosion. When clearing the area of operations of vegetation other than grass, the vegetation removed will be placed in drainages, washes, gullies, etc., and "walked down" by crawler type tractor. If no drainages are in the immediate area, the vegetation will be "walked down" in place. After construction has been completed, the affected area will be left in as aesthetically pleasing condition as possible. All trash resultant from construction activities will be disposed of. Any large rocks left as a result of construction activities will not be piled or left in rolls but will be left so they do not detract from the scenic attributes of the area and will not hinder the movement of livestock or big game animals.
14. Any "available topsoil" encountered during the construction of the drill site area will be stockpiled and made available for re-surfacing of the reserve pit area (after pits are covered) after completion of the drilling operation.
15. The "mud pits" shall be well constructed and under no circumstances will they be allowed to leak or be cut to drain. They shall not be located on natural drainages. Waste or discharge of any kind will not be allowed to enter any drainage. Any plastic material used to line pits and/or sumps shall be cut-off below ground level, as far down as possible, and disposed of before the pits are covered. All unattended pits, containing liquids, will be fenced and the liquid portion allowed to evaporate before the pits are broken.
16. All pits found to contain toxic liquids will be fenced and covered with a fine-mesh netting for the protection of wildlife as directed by the responsible BLM representative.

17. All waste associated with the drilling operation will be buried in place (in a separate trash pit) or removed and deposited in an approved sanitary landfill. All garbage (metal containers will be crushed) and debris left on site will be buried at least three feet deep. All trash and debris will be buried or removed from the site within one month after removal of the drill rig. The permittee will comply with all state laws and regulations pertaining to the disposal of human waste.
18. The well "site", if a producer, will be maintained and kept clean of all trash and litter or other foreign material which detracts from the surrounding environment. Maintenance shall also include measures necessary to stabilize soil conditions (other than reseeding) on the road and pad area, and maintenance of facilities associated with said well, to the satisfaction of the District Manager for the lifetime of the well.
19. In the event the oil or gas test results in a dry hole, the drill pad and access road will be ripped in accordance with "BLM Roswell Districts' Ripping Recommendations for Caliche or Compacted Drill Pads and Access Roads" (3109). (Reseeding of the affected areas may be required at the discretion of the District Manager).

RECEIVED

1976

OIL CONSERVATION COM. L.
H-BUS, R. M.

1976