

UNITED STATES
DEPARTMENT OF THE INTERIOR
GEOLOGICAL SURVEY

APPLICATION FOR PERMIT TO DRILL, DEEPEN, OR PLUG BACK

1a. TYPE OF WORK

DRILL ☒DEEPEN ☐PLUG BACK ☐

b. TYPE OF WELL

OIL
WELL ☒GAS
WELL ☐OTHER ☐SINGLE
ZONE ☐MULTIPLE
ZONE ☐

2. NAME OF OPERATOR

CONTINENTAL OIL COMPANY

3. ADDRESS OF OPERATOR

Box 460, Hobbs, N.M. 88240

4. LOCATION OF WELL (Report location clearly and in accordance with any State requirements.)*

At surface

660' FNL & 1980' FEL OF SEC 11

At proposed prod. zone

SAME

14. DISTANCE IN MILES AND DIRECTION FROM NEAREST TOWN OR POST OFFICE*

15. DISTANCE FROM PROPOSED*

LOCATION TO NEAREST
PROPERTY OR LEASE LINE, FT.
(Also to nearest drlg. unit line, if any)

18. DISTANCE FROM PROPOSED LOCATION*

TO NEAREST WELL, DRILLING, COMPLETED,
OR APPLIED FOR, ON THIS LEASE, FT.

21. ELEVATIONS (Show whether DF, RT, GR, etc.)

3570.9 GR

23.

PROPOSED CASING AND CEMENTING PROGRAM

SIZE OF HOLE	SIZE OF CASING	WEIGHT PER FOOT	SETTING DEPTH	QUANTITY OF CEMENT
12 1/4"	8 1/8"	24#	1250'	650 SX Circ.
7 7/8"	5 1/2"	14#	5100'	350 SX

IT IS Proposed to Drill a Straight Hole to a TD
of 5100' and complete as an oil well in the Ramsey
Zone, (Delaware).

Mud Program: 0-1250' Fresh Water; 1250-5100', Salt
Gel. 9.0-10.0#.

See Attached For B.O.P. Program.

See Attached Proposed Well Plan For Formation Tops,
Logging, Etc.

1-13-77

IN ABOVE SPACE DESCRIBE PROPOSED PROGRAM: If proposal is to deepen or plug back, give data on present productive zone and proposed new productive zone. If proposal is to drill or deepen directionally, give pertinent data on subsurface locations and measured and true vertical depths. Give blowout preventer program, if any.

24.

SIGNED

Bill Renfrow

TITLE

Adm Supervisor

DATE

9-14-76

(This space for Federal or State office use)

PERMIT NO.

APPROVAL DATE

APPROVED BY

TITLE

DATE

CONDITIONS OF APPROVAL, IF ANY:

*See Instructions On Reverse Side

USGS-6 File

NEW MEXICO OIL CONSERVATION COMMISSION
WELL LOCATION AND ACREAGE DEDICATION PLAT

Form C-10,
Supersedes C-128
Effective 1-1-65

All distances must be from the outer boundaries of the Section.

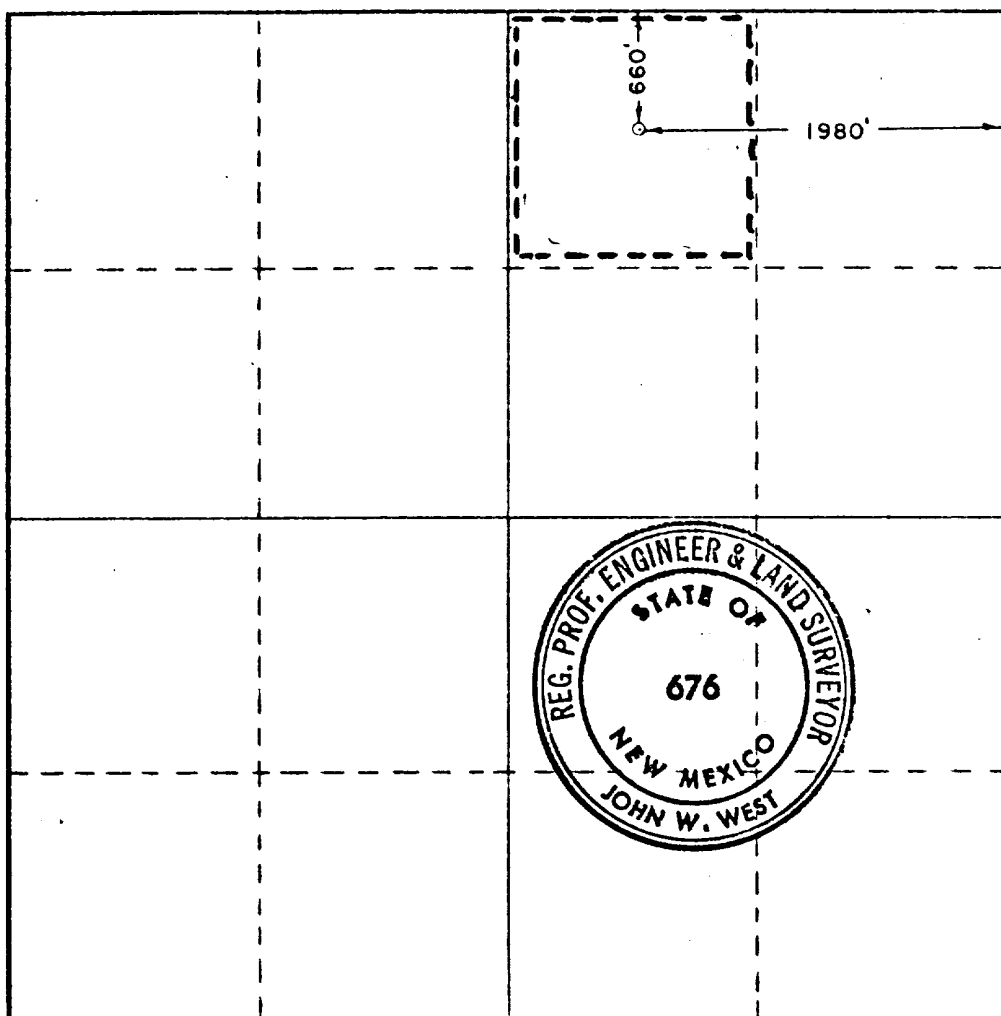
Operator CONTINENTAL OIL COMPANY		Lease Wimberly		Well No. 6
Unit Letter B	Section 11	Township 24 South	Range 32 East	County Lea
Actual Footage Location of Well: 660 feet from the north line and 1980 feet from the east line				
Ground Level Elev. 3570.9	Producing Formation Delaware	Pool Double X Delaware	Dedicated Acreage: 40 Acres	

1. Outline the acreage dedicated to the subject well by colored pencil or hatchure marks on the plat below.
2. If more than one lease is dedicated to the well, outline each and identify the ownership thereof (both as to working interest and royalty).
3. If more than one lease of different ownership is dedicated to the well, have the interests of all owners been consolidated by communitization, unitization, force-pooling, etc?

☐ Yes ☐ No If answer is "yes," type of consolidation _____

If answer is "no," list the owners and tract descriptions which have actually been consolidated. (Use reverse side of this form if necessary.) _____

No allowable will be assigned to the well until all interests have been consolidated (by communitization, unitization, forced-pooling, or otherwise) or until a non-standard unit, eliminating such interests, has been approved by the Commission.



CERTIFICATION

I hereby certify that the information contained herein is true and complete to the best of my knowledge and belief.

Bill Penlow
Name
Adm. Supervisor
Position

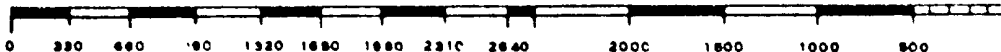
Company
CONTINENTAL OIL CO.
Date
9-14-76

I hereby certify that the well location shown on this plat was plotted from field notes of actual surveys made by me or under my supervision, and that the same is true and correct to the best of my knowledge and belief.

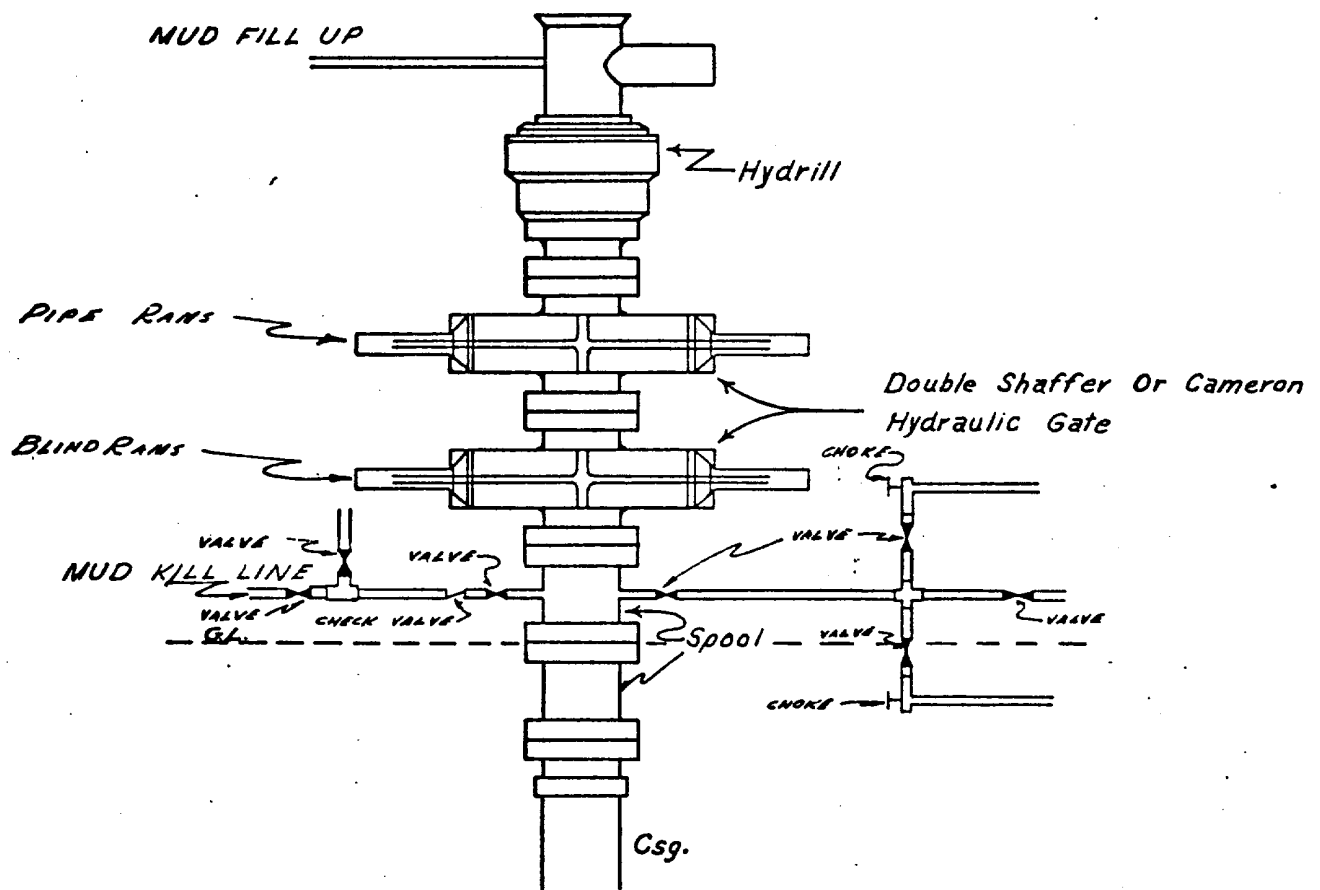
Date Surveyed
August 23, 1976

Registered Professional Engineer and/or Land Surveyor

John W. West
Signature No. **676**



CONTINENTAL OIL COMPANY
Blow-out Preventer Specifications



API Series 900

NOTE:

Manual and Hydraulic controls with closing unit no less than 75' from well head.
Remote controls on rig floor.

**DUE TO SUBSTRUCTURE CLEARANCE,
HYDRILL MAY OR MAY NOT BE USED.**

COPIES . . .

STATE: New Jico

DEPTH	FORMATION TOPS & TYPE	DRILLING PROBLEMS	TYPE OF FORMATION EVALUATION	HOLE SIZE	CASING		FRACTURE GRADIENT	FORMATION PRESSURE GRADIENT	MUD	
					SIZE	DEPTH			WEIGHT	TYPE
	Rustler 1160 Salado 1310	Poss. L. Circ.		12-1/4	8-5/8	1250	-	-	8.5 9.0	Fresh Water
	Lamar 4900 Ramsey 4950 5100 TD	Prob. L. Circ	GR-BHC Sonic 4400' TD DIL or DLL 4900' TD	7-7/8	5-1/2	5100	12.0 12.5	Less than 8.3	9.0 10.0	Salt Gel

Prepared by: _____

SURFACE USE PLAN

Continental Oil Company, Wimberly No. .
660' FNL and 1980' FEL of Sec. 11, T-24S, R-32E
Lease NM02889, Lea County, N.M.

This plan is to accompany "Application for Permit to Drill" the subject well which is located approximately 30 miles on a direct line south-west of Eunice, New Mexico. The following is a discussion of pertinent information concerning possible effect which the proposed drilling of the well may have on the environment of the well and road sites and surrounding acreage. A copy will be posted on the derrick floor so that all contractors and sub-contractors will be aware of all items of this plan.

1. Existing Roads - Exhibit "A" and "B", a portion of a New Mexico road map showing existing black top roads. Directions to the location (outlined in red on map) from Eunice, New Mexico are as follows: from the blinking light at Conoco station in Euncie, travel 2.5 miles south; turn west on Delaware Basin Road and go 32.2 miles to Highway No. 128; turn west and travel 8 miles; turn north on caliche road and go 1.9 miles and the location road stakes are on the north side of road.
2. Planned Roads - 12' x 800' (staked) compacted with caliche, 6" thick.
3. Locations of Existing Wells - See Exhibit "C".
4. Tank Battery and Flowlines - The existing battery and lines are shown on exhibit "C".
5. Water Supply - The fresh water will be hauled from Carl Johnson Water Station in Section 16, T-24S, R-33E on the north side of Highway 128. The salt water will be hauled from Teleydene Water Station approximately 7 miles east of Loving on side of Highway 128.
6. Source of Construction Materials - Caliche pit located NW/SW Section 14, T-24S, R-32E, and caliche to be hauled 1.1 mile north on existing caliche road to the new road location.
7. Waste Disposal - Well cuttings will be disposed in reserve pit. Barrel trash containers to be in accessible locations within drill site area during drilling and completion procedures. All detrimental waste will be hauled away, burned or buried with a minimum cover of 24" of dirt. See Exhibit "D" for location of pits. If well is productive, maintenance waste will be placed in special trash cans and hauled away periodically. Any produced water will be collected in tanks until hauled to an approved disposal system, or separate disposal applications will be submitted to the survey for appropriate approval.
8. Ancillary Facilities - None.
9. Proposed Well Mat and Immediate Area - Refer to Exhibit "D" for direction orientation.
 - a. Size of drilling Pad - 200' x 180' (staked)

- b. Surfaced - Will be topped with 6" of caliche, bladed, watered and compacted. Caliche to be purchased from BLM by dirt contractor.
 - c. Reserve Pit - 25' x 100' (staked) lined with plastic and joining mat on north side.
 - d. Cut and Fill - One foot of cut required running from north to south for approximately 100 feet.
 - e. Drill Site Layout - Exhibit "D" shows position of mat, reserve pits, burn pits, trash pits, and mud pits in relation to the well bore. Rig will be erected with the V-Door to the east.
10. Restoration of Surface - Pits will be backfilled and leveled as soon as practical to original condition. Commencement of rehabilitation operations will immediately follow removal of drilling and completion equipment from location and rehabilitation of the surface is planned to be completed within 45 days from commencement.
11. Other Information -
- a. Terrain - Low rolling sand hills. See Exhibit "B", topographic map of area.
 - b. Soil - Sandy.
 - c. Vegetation - Mesquite; rye grass.
 - d. Surface Use - Grazing.
 - e. Ponds and Steams - None within one mile.
 - f. Water Wells - None within one mile.
 - g. Residences and Buildings - None within one mile.
 - h. Arroyos, Canyons, Etc. - There are no significant surface features, see attached Exhibit "B".
 - i. Well Sign - Sign identifying and locating well will be maintained at drill site with the spudding of the well.
 - j. Open Pits - All pits containing mud or other liquids will be fenced.
 - k. Archaeological Resources - None observed.
12. Operator's Representative - Field personnel who can be contacted concerning compliance of this Surface Use Plan are as follows:

Production & Drilling
C. R. Paschal or D. A. Sowers
1001 North Turner
Hobbs, New Mexico 88240
Phone: 393-4141

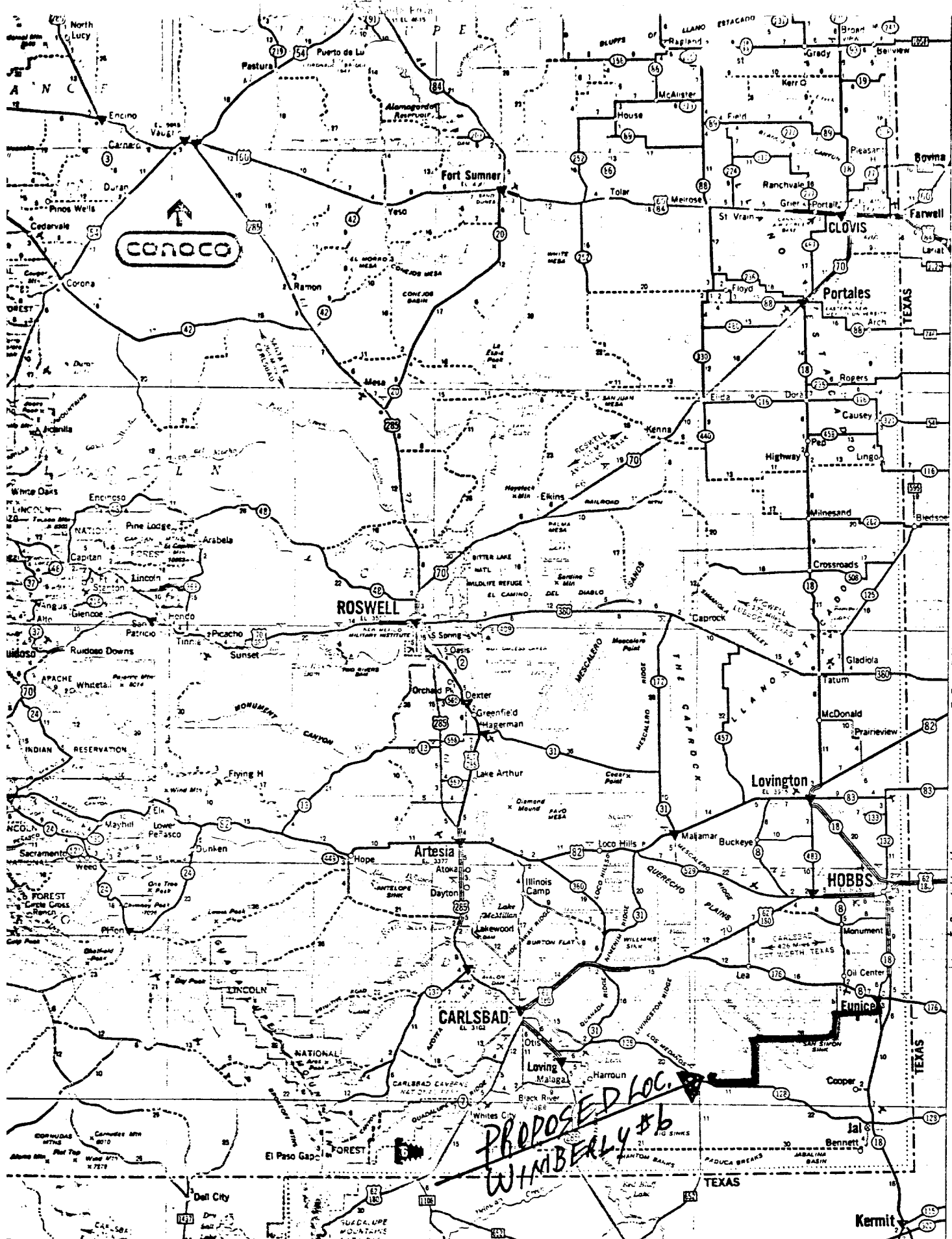
13. Certification - I hereby certify that I, or persons under my direct supervision, have inspected the proposed drill site and access route; that I am familiar with the conditions which presently exist; that the statements made in this plan are, to the best of my knowledge, true and correct; and that the work associated with the operations proposed herein will be performed by Continental Oil Company and its contractors and sub-contractors in conformity with this plan and the terms and conditions under which it is approved.

Date

9-14-76

D. A. Sowers

D. A. Sowers
Production Superintendent



CONTINENTAL OIL CO.
WIMBERLY NO. 6
EXHIBIT "A"

LOCATIONS WHERE CONOCO PRODUCTS ARE SOLD

Locations on Interstate Highways toll roads or major limited access highways where CONOCO PRODUCTS are sold.

▼ Other CONOCO station locations.

▼ Locations of CONOCO Travel Shoppes

▼ Locations where CONOCO DEALERS provide Trailer Travelers with Sanitary Disposal Facilities. Look for this sign:

CONOCO

T TRAILER DISPOSAL

TOURADE ATTRACTIONS

HISTORICAL

SCENIC

GENERAL

Attraction points described on reverse side

San Antonio	C-1	San Jose	D-6
San Diego	C-2	San Juan	D-7
San Francisco	C-3	San Marcos	D-8
San Gabriel	C-4	San Antonio	D-9
San Antonio	C-5	San Antonio	D-10
San Antonio	C-6	San Antonio	D-11
San Antonio	C-7	San Antonio	D-12
San Antonio	C-8	San Antonio	D-13
San Antonio	C-9	San Antonio	D-14
San Antonio	C-10	San Antonio	D-15
San Antonio	C-11	San Antonio	D-16
San Antonio	C-12	San Antonio	D-17
San Antonio	C-13	San Antonio	D-18
San Antonio	C-14	San Antonio	D-19
San Antonio	C-15	San Antonio	D-20
San Antonio	C-16	San Antonio	D-21
San Antonio	C-17	San Antonio	D-22
San Antonio	C-18	San Antonio	D-23
San Antonio	C-19	San Antonio	D-24
San Antonio	C-20	San Antonio	D-25
San Antonio	C-21	San Antonio	D-26
San Antonio	C-22	San Antonio	D-27
San Antonio	C-23	San Antonio	D-28
San Antonio	C-24	San Antonio	D-29
San Antonio	C-25	San Antonio	D-30
San Antonio	C-26	San Antonio	D-31
San Antonio	C-27	San Antonio	D-32
San Antonio	C-28	San Antonio	D-33
San Antonio	C-29	San Antonio	D-34
San Antonio	C-30	San Antonio	D-35
San Antonio	C-31	San Antonio	D-36
San Antonio	C-32	San Antonio	D-37
San Antonio	C-33	San Antonio	D-38
San Antonio	C-34	San Antonio	D-39
San Antonio	C-35	San Antonio	D-40
San Antonio	C-36	San Antonio	D-41
San Antonio	C-37	San Antonio	D-42
San Antonio	C-38	San Antonio	D-43
San Antonio	C-39	San Antonio	D-44
San Antonio	C-40	San Antonio	D-45
San Antonio	C-41	San Antonio	D-46
San Antonio	C-42	San Antonio	D-47
San Antonio	C-43	San Antonio	D-48
San Antonio	C-44	San Antonio	D-49
San Antonio	C-45	San Antonio	D-50
San Antonio	C-46	San Antonio	D-51
San Antonio	C-47	San Antonio	D-52
San Antonio	C-48	San Antonio	D-53
San Antonio	C-49	San Antonio	D-54
San Antonio	C-50	San Antonio	D-55
San Antonio	C-51	San Antonio	D-56
San Antonio	C-52	San Antonio	D-57
San Antonio	C-53	San Antonio	D-58
San Antonio	C-54	San Antonio	D-59
San Antonio	C-55	San Antonio	D-60
San Antonio	C-56	San Antonio	D-61
San Antonio	C-57	San Antonio	D-62
San Antonio	C-58	San Antonio	D-63
San Antonio	C-59	San Antonio	D-64
San Antonio	C-60	San Antonio	D-65
San Antonio	C-61	San Antonio	D-66
San Antonio	C-62	San Antonio	D-67
San Antonio	C-63	San Antonio	D-68
San Antonio	C-64	San Antonio	D-69
San Antonio	C-65	San Antonio	D-70
San Antonio	C-66	San Antonio	D-71
San Antonio	C-67	San Antonio	D-72
San Antonio	C-68	San Antonio	D-73
San Antonio	C-69	San Antonio	D-74
San Antonio	C-70	San Antonio	D-75
San Antonio	C-71	San Antonio	D-76
San Antonio	C-72	San Antonio	D-77
San Antonio	C-73	San Antonio	D-78
San Antonio	C-74	San Antonio	D-79
San Antonio	C-75	San Antonio	D-80
San Antonio	C-76	San Antonio	D-81
San Antonio	C-77	San Antonio	D-82
San Antonio	C-78	San Antonio	D-83
San Antonio	C-79	San Antonio	D-84
San Antonio	C-80	San Antonio	D-85
San Antonio	C-81	San Antonio	D-86
San Antonio	C-82	San Antonio	D-87
San Antonio	C-83	San Antonio	D-88
San Antonio	C-84	San Antonio	D-89
San Antonio	C-85	San Antonio	D-90
San Antonio	C-86	San Antonio	D-91
San Antonio	C-87	San Antonio	D-92
San Antonio	C-88	San Antonio	D-93
San Antonio	C-89	San Antonio	D-94
San Antonio	C-90	San Antonio	D-95
San Antonio	C-91	San Antonio	D-96
San Antonio	C-92	San Antonio	D-97
San Antonio	C-93	San Antonio	D-98
San Antonio	C-94	San Antonio	D-99
San Antonio	C-95	San Antonio	D-100

NEW MEXICO

SCALE OF MILES

ONE INCH EQUALS APPROXIMATELY 21.6 MILES

HIGHWAY MARKERS

INTERSTATE (I) UNITED STATES (U.S.) STATE (S) TEXAS FARM OR RANCH (F.R.)

ROAD CLASSIFICATIONS

CONTROLLED ACCESS DIVIDED HIGHWAYS

OTHER DIVIDED HIGHWAYS

PRINCIPAL THROUGH HIGHWAYS

MILEAGES

MILEAGE BETWEEN TOWNS AND JUNCTIONS

MILEAGE BETWEEN DOTS

LONG DISTANCE MILEAGES SHOWN IN RED

SPECIAL FEATURES

STATE PARKS

RECREATION AREAS

PORTS OF ENTRY

POINTS OF INTEREST

POPULATION SYMBOLS

State Capital

Under 1,000

2,500 to 5,000

5,000 to 10,000

25,000 to 50,000

50,000 to 100,000

SCHEDULED AIRLINE STOPS

MILITARY AIRPORTS

OTHER AIRPORTS

TOURIST INFORMATION

SKI AREAS

SELECTED REST AREAS

BOAT RAMPS

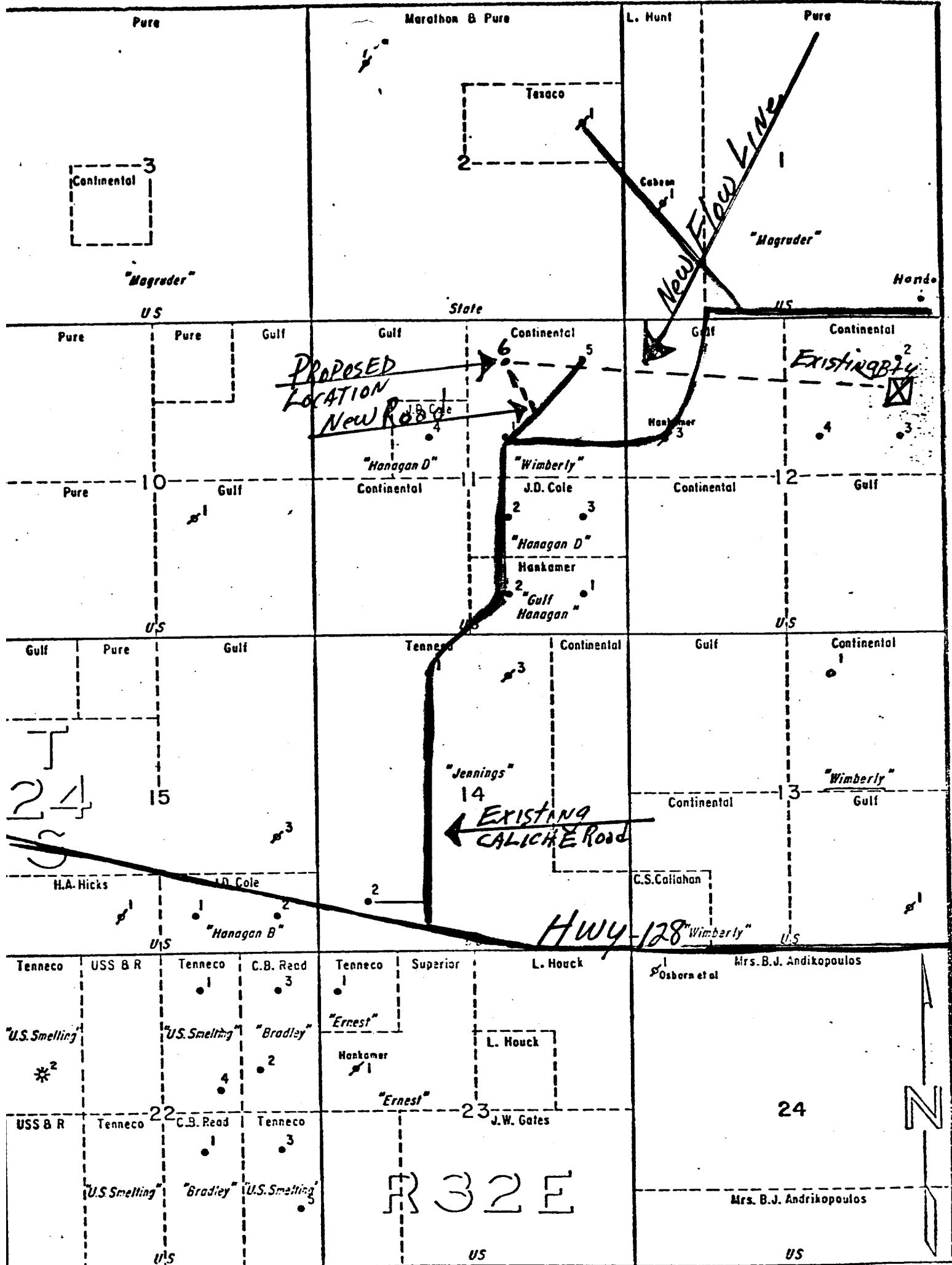
TIME ZONE BOUNDARY

7.5 MINUTE SERIES (TOPOGRAPHIC)

52481
(HAT MESA)
1:62 500



Wimberly, No. 6.
660' FNL & 1980' FEL
Sec. 11, T-24S, R. 32E
Lea County, N.M.



Wimberly No. 6
 660' FNL & 1980' FEL
 Sec. 11, T-24S, R-32E
 Lea Co., N.M.
 " "
 EXHIBIT "C"

CONTINENTAL OIL COMPANY

PRODUCTION DEPARTMENT—HOBBS DISTRICT

DOUBLE-X DELAWARE POOL

LEA COUNTY, NEW MEXICO

■ HIGHWAY 128

■ EXISTING FLOW LINE

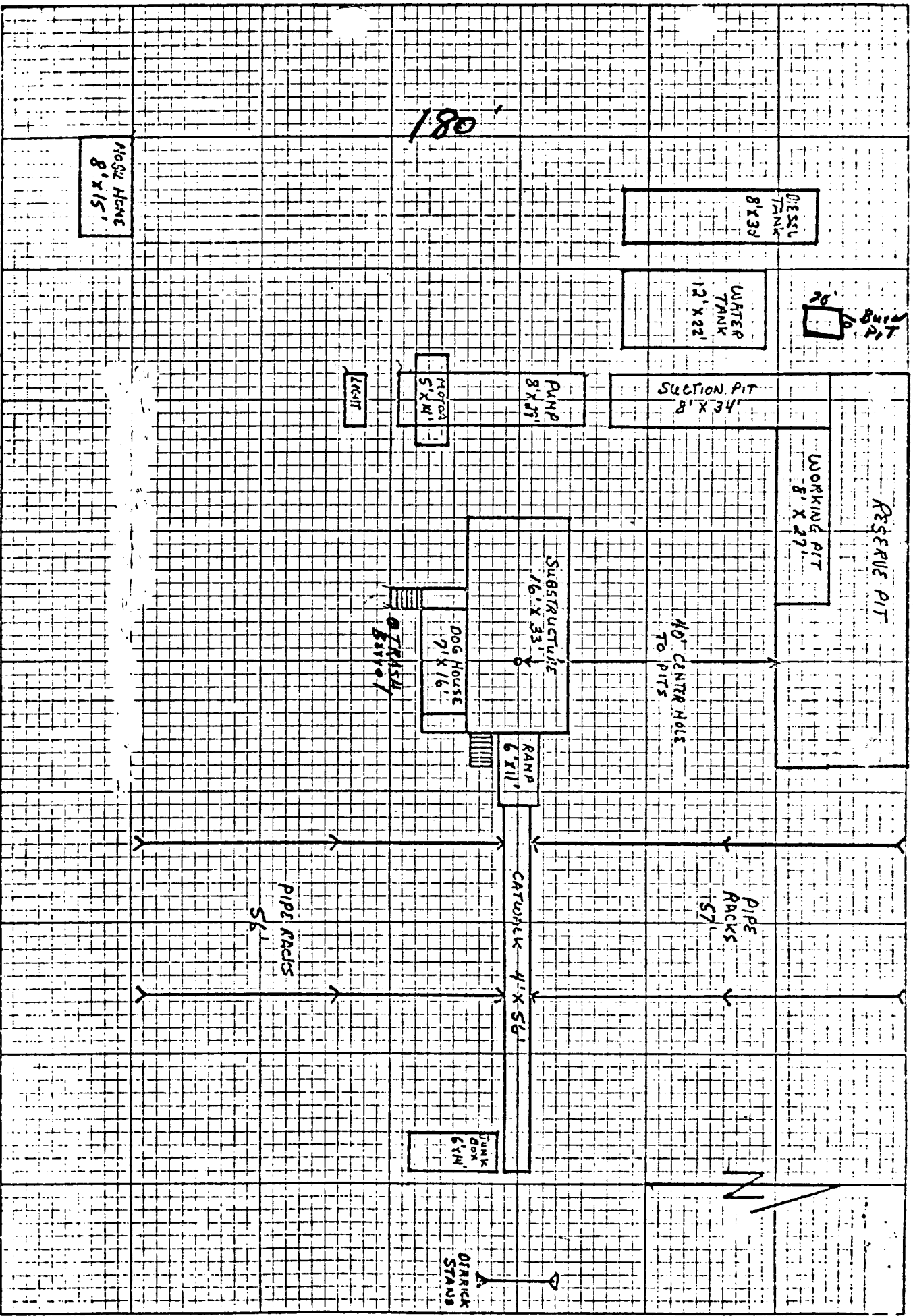
■ NEW FLOW LINE

■ EXISTING BTRY

SCALE

0' 1000' 2000'

200'



EXHAUST "N" ALUMINUM NO. 6 CONTINENTAL OIL CO.

U. S. GEOLOGICAL SURVEY
P. O. Box 1157
Hobbs, New Mexico 88240

HOBBS DISTRICT

Continental Oil Co.
No. 6 Wimberly
NW $\frac{1}{4}$ NE $\frac{1}{4}$ sec. 11-24S-32E
Lea County, N. M.

Above Data Required on Well Sign

CONDITIONS OF APPROVAL

1. Drilling operations authorized are subject to the attached sheet for general requirements for drilling and producing operations.
2. Notify this office (telephone (505) 393-3612) when the well is spudded and in sufficient time for a representative to witness cementing operations.
3. Immediate notice is required of all blowouts, fires, spills, and accidents involving life-threatening injuries or loss of life.
4. Secure prior approval before changing the approved drilling program or commencing plugging operations, plug-back work, casing repair work, or corrective cementing operations.
5. Blowout prevention equipment is to be installed, tested, and in working order before drilling below the surface casing and shall be maintained ready for use until drilling operations are completed.
6. A kill-line is to be properly installed and is not to be used as a fill-up line.
7. Blowout preventers are to have proper casing rams when running casing.
8. Drill string safety valve(s) to fit all pipe in the drill string to be maintained on the rig floor while drilling operations are in progress.
9. Blowout prevention drills are to be conducted as necessary to assure that equipment is operational and that each crew is properly trained to carry out emergency duties. All BOP tests and drills are to be recorded on the driller's log.
10. If, during operations, the operator or any person working in his behalf, discover any historic or prehistoric ruin, monument or site, or any object of antiquity subject to the Antiquities Act of June 8, 1906, (34 Stat. 225, 16 U.S.C. Secs. 431-433), and 43 CFR Part 3, then work will be suspended and the discovery promptly reported to the District Manager. The Bureau will then take such action as required under the Act and regulations thereunder. When directed by the District Manager, the operator will obtain, at his expense, a qualified archaeologist to examine and, if necessary, excavate or gather such ruins or objects.
11. All access roads constructed in conjunction with the drilling permit should be limited to 12 feet in width, along with turnouts. If well is a producer, all roads will be adequately drained to control runoff and soil erosion. Drainage facilities may include ditches, water bars, culverts and/or any other measure deemed necessary by the responsible BLM representative.

12. Materials removed during construction must be disposed of in such a manner that it does not detract from the aesthetics and does not accelerate erosion. When clearing the area of operations of vegetation other than grass, the vegetation removed will be placed in drainages, washes, gullies, etc., and "walked down" by crawler type tractor. If no drainages are in the immediate area, the vegetation will be "walked down" in place. After construction has been completed, the affected area will be left in as aesthetically pleasing condition as possible. All trash resultant from construction activities will be disposed of. Any large rocks left as a result of construction activities will not be piled or left in rolls but will be left so they do not detract from the scenic attributes of the area and will not hinder the movement of livestock or big game animals.
13. Any "available topsoil" encountered during the construction of the drill site area will be stockpiled and made available for re-surfacing of the reserve pit area (after pits are covered) after completion of the drilling operation.
14. "Caliche" for use in the construction of the drill pad and access road shall be obtained from existing authorized pits whenever possible, as determined by the responsible BLM representative. No new pits shall be opened without prior approval from the responsible BLM representative.
15. The "mud pits" shall be well constructed and under no circumstances will they be allowed to leak or be cut to drain. They shall not be located on natural drainages. Waste or discharge of any kind will not be allowed to enter any drainage. Any plastic material used to line pits and/or sumps shall be cut-off below ground level, as far down as possible, and disposed of before the pits are covered. All unattended pits, containing liquids, will be fenced and the liquid portion allowed to evaporate before the pits are broken.
16. All pits found to contain toxic liquids will be fenced and covered with a fine-mesh netting for the protection of wildlife as directed by the responsible BLM representative.
17. All waste associated with the drilling operation will be buried in place (in a separate trash pit) or removed and deposited in an approved sanitary landfill. All garbage (metal containers will be crushed) and debris left on site will be buried at least three feet deep. All trash and debris will be buried or removed from the site within one month after removal of the drill rig. The permittee will comply with all state laws and regulations pertaining to the disposal of human waste.

18. The well "site", if a producer, will be maintained and kept clean of all trash and litter or other foreign material which detracts from the surrounding environment. Maintenance shall also include measures necessary to stabilize soil conditions (other than reseeding) on the road and pad area, and maintenance of facilities associated with said well, to the satisfaction of the District Manager for the lifetime of the well.
19. In the event the oil or gas test results in a dry hole, the drill pad and access road will be ripped in accordance with "BLM Roswell Districts' Ripping Recommendations for Caliche or Compacted Drill Pads and Access Roads" (3109). (Reseeding of the affected areas may be required at the discretion of the District Manager).