

UNITED STATES
DEPARTMENT OF THE INTERIOR
GEOLOGICAL SURVEY

APPLICATION FOR PERMIT TO DRILL, DEEPEN, OR PLUG BACK

1a. TYPE OF WORK

DRILL ☒DEEPEN ☐PLUG BACK ☐

b. TYPE OF WELL

OIL
WELL ☒GAS
WELL ☐OTHER ☐SINGLE
ZONE ☐MULTIPLE
ZONE ☐

2. NAME OF OPERATOR

Continental Oil Company

3. ADDRESS OF OPERATOR

Box 460, Hobbs NM 88240

4. LOCATION OF WELL (Report location clearly and in accordance with any State requirements.)

At surface

1980' FSL & 1980' FWL OF SEC. 12

At proposed prod. zone

Same

14. DISTANCE IN MILES AND DIRECTION FROM NEAREST TOWN OR POST OFFICE*

10. DISTANCE FROM PROPOSED*

LOCATION TO NEAREST
PROPERTY OR LEASE LINE, FT.
(Also to nearest drlg. unit line, if any)

18. DISTANCE FROM PROPOSED LOCATION*

TO NEAREST WELL, DRILLING, COMPLETED,
OR APPLIED FOR, ON THIS LEASE, FT.

21. ELEVATIONS (Show whether DF, RT, GR, etc.)

3593' GR

16. NO. OF ACRES IN LEASE

17. NO. OF ACRES ASSIGNED
TO THIS WELL

19. PROPOSED DEPTH

5070'

20. ROTARY OR CABLE TOOLS

Rotary

22. APPROX. DATE WORK WILL START*

4-25-77

23.

PROPOSED CASING AND CEMENTING PROGRAM

SIZE OF HOLE	SIZE OF CASING	WEIGHT PER FOOT	SETTING DEPTH	QUANTITY OF CEMENT
12 1/2"	Now 8 3/8"	24#	1250'	650 SX CIRC
7 7/8"	Now 5 1/2"	14#	5070'	400 SX

IT IS Proposed TO Drill A Straight Hole TO A TD
OF 5070' and complete AS A Oil Well IN The Ramsey
Zone (Delaware),

See Attached For The B.O.P. Program, Mud Program,
Formation TOPS, Logging, ETC,

Unless Drilling Operations have
Commenced, this drilling approval
Expires 8-19-77

SEE ATTACHED FOR
CONDITIONS OF APPROVAL

IN ABOVE SPACE DESCRIBE PROPOSED PROGRAM: If proposal is to deepen or plug back, give data on present productive zone and proposed new productive zone. If proposal is to drill or deepen directionally, give pertinent data on subsurface locations and measured and true vertical depths. Give blowout preventer program, if any.

24.

SIGNED

Wm. A. Butts

TITLE

Admin. Serv.

DATE

3-28-77

(This space for Federal or State office use)

PERMIT NO.

APPROVAL DATE

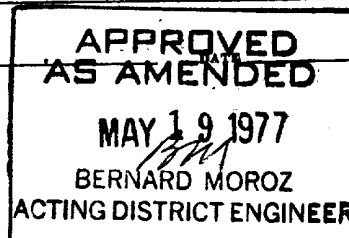
APPROVED BY

TITLE

CONDITIONS OF APPROVAL, IF ANY

APPROVAL TO FLARE GRANTED
WHILE DRILLING AND TESTING.

*See Instructions On Reverse Side



USGS (6) File (2)

QIL COMMUNICATIONS COMM.
HOBBS, N. M.
JAN 21 1987

Attachment to Form 9-331 C
Application for Permit to Drill

Continental Oil Company, Wimberly No. 8
1980' FSL and 1980' FWL of Section 12, T-24S, R-32E
Lea County, New Mexico

1. The geologic name of the surface formation is Quaternary Sand.
2. The estimated tops of important geologic markers are shown on the attached Proposed Well Plan.
3. The estimated depths at which anticipated water, oil, gas or other mineral-bearing formations to be encountered are as follows:

Aquifer SS 550' water	Lamar 4940' lime
Rustler 1180' redbed	Ramsey 4980' SS oil
Salado 1300' salt	Ford 5020' shale
4. The proposed casing program is as follows:

Surface - new 8 5/8" 24# K-55 STC set at 1250'
Production - new 5 1/2" 14# K-55 STC set at 5070'
5. A drawing of an API Series 900 Blowout Preventer Specification is attached. Pipe rams and blinds will be checked to 1,000 PSI for 30 minutes when BOP is installed. BOP will be checked when casing string is set and operated daily for checks.
6. The proposed mud program is as follows:

0-1250' fresh water	8.5-9.0 pounds per gallon
1250'-5070' salt gel	9.0-10.0 pounds per gallon
7. The auxiliary equipment to be used is:
 - (1) kelly cocks
 - (2) floats at the bit
8. It is proposed to run 2" and 5" GR-BHC Sonic Logs from TD to 4400' and DIL from TD to 4800'.
9. No abnormal pressures or temperatures are expected to be encountered in this well.
10. The anticipated starting date for this well is April 25, 1977 with a duration date of approximately ten days.

**NEW MEXICO OIL CONSERVATION COMMISSION
WELL LOCATION AND ACREAGE DEDICATION P**

Form C-102
Supersedes C-12H
Effective 1-1-65

All distances must be from the outer boundaries of the Section

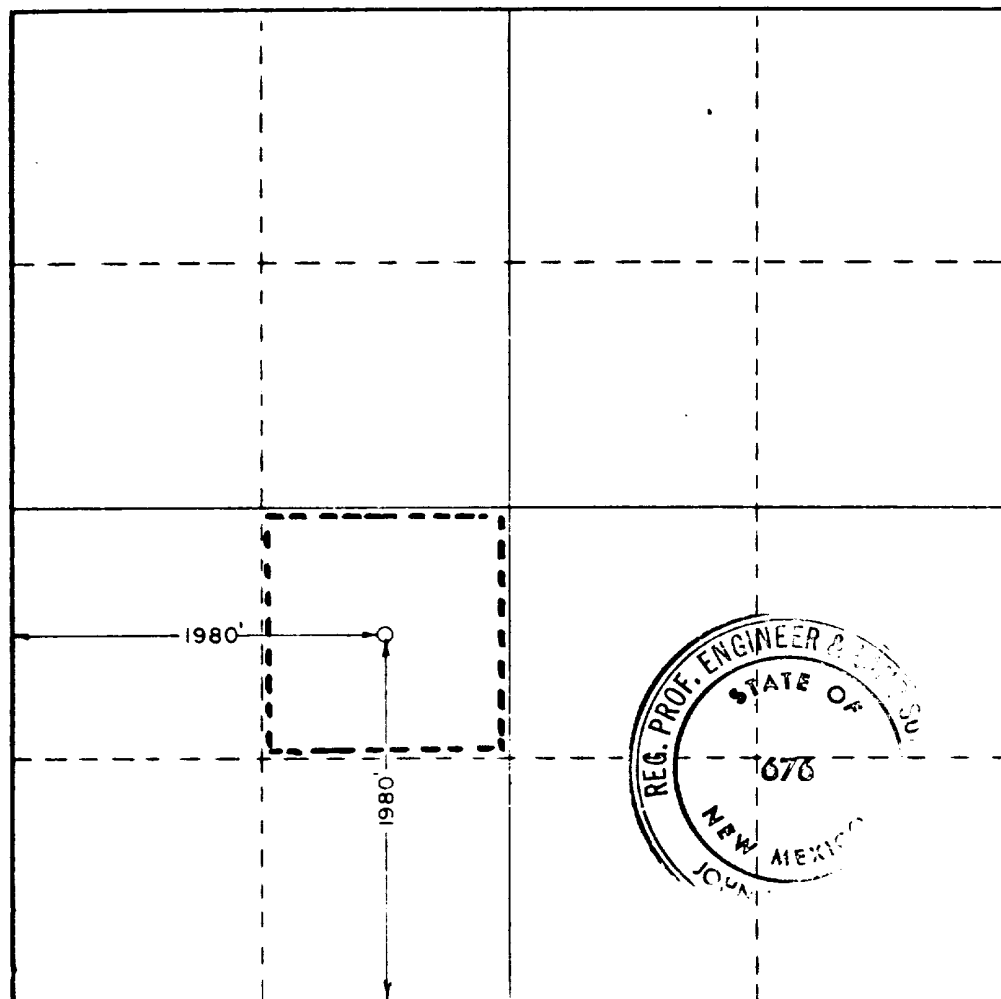
Operator CONTINENTAL OIL COMPANY			Lease WIMBERLY		Well No. 8
Unit Letter K	Section 12	Township 24 South	Range 32 East	County Lea	
Actual Well Location of Well:					
1980 feet from the South line and		1980 feet from the West line			
Ground Level Elev. 3593.85	Producing Formation Delaware	Pool Double X Delaware		Dedicated Acreage: 40	

1. Outline the acreage dedicated to the subject well by colored pencil or hatchure marks on the plat below.
2. If more than one lease is dedicated to the well, outline each and identify the ownership thereof (both as to working interest and royalty).
3. If more than one lease of different ownership is dedicated to the well, have the interests of all owners been consolidated by communitization, unitization, force-pooling, etc?

☐ Yes ☐ No If answer is "yes," type of consolidation _____

If answer is "no," list the owners and tract descriptions which have actually been consolidated. (Use reverse side of this form if necessary.) _____

No allowable will be assigned to the well until all interests have been consolidated (by communitization, unitization, forced-pooling, or otherwise) or until a non-standard unit, eliminating such interests, has been approved by the Commission.



CERTIFICATION

I hereby certify that the information contained herein is true and complete to the best of my knowledge and belief.

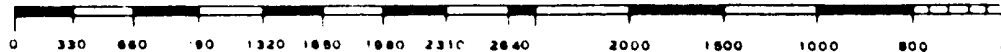
Name Wm. A. Butterfield
 Position ADMIN. SUPERV.
 Company CONTINENTAL OIL CO.
 Date 3-28-77

I hereby certify that the well location shown on this plat was plotted from field notes of actual surveys made by me or under my supervision, and that the same is true and correct to the best of my knowledge and belief.

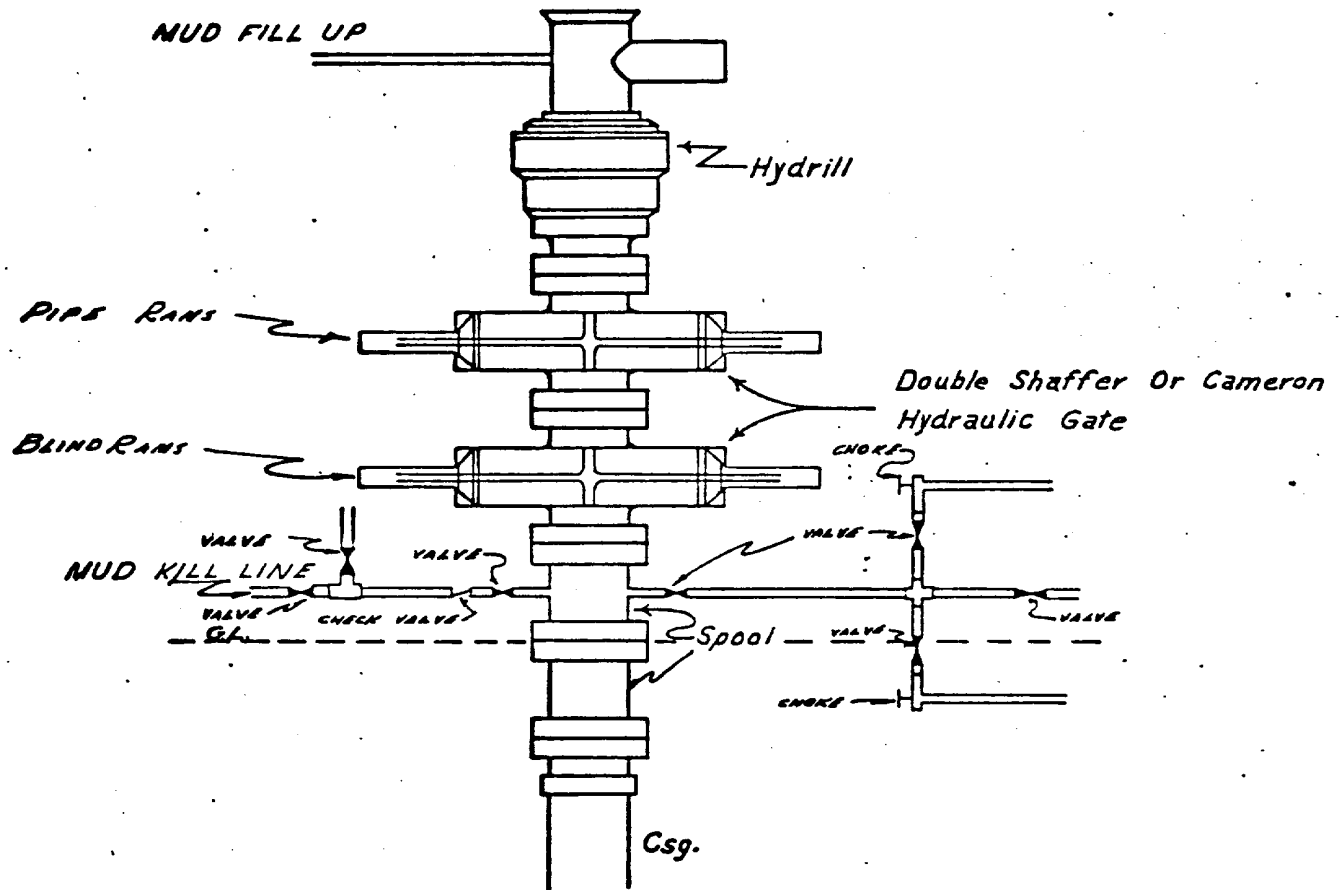
Date Surveyed
March 12, 1977

Registered Professional Engineer and/or Land Surveyor

John W. West
 Certificate No. **676**



CONTINENTAL OIL COMPANY
Blow-out Preventer Specifications



API Series 900

NOTE:

Manual and Hydraulic controls with closing unit no less than 75' from well head.
Remote controls on rig floor.

DUE TO SUBSTRUCTURE CLEARANCE,
HYDRILL MAY OR MAY NOT BE USED.

Winberly NO. 8

COUNTY OF LOS ANGELES

STATE: Essex 3607 KB

Approved: _____
 Div. Director

Prepared by: _____
 Div. Engineer Drilling Dept.

SURFACE USE PLAN
Continental Oil Company, Wimberly No. 8
1980' FSL and 1980' FWL of Section 12, T-24S, R-32E
Lease NM02889, Lea County, NM

This plan is to accompany "Application for Permit to Drill" the subject well which is located approximately 30 miles on a direct line southwest of Eunice, New Mexico. The following is a discussion of pertinent information concerning possible effect which the proposed drilling of the well may have on the environment of the well and road sites and surrounding acreage. A copy will be posted on the derrick floor so that all contractors and sub-contractors will be aware of all items of this plan.

1. Existing Roads

- A. The proposed well site is 1980' FSL and 1980' FWL of Section 12, T-24S, R-32E, Lea County, New Mexico.
- B. Exhibit "A" is a portion of a New Mexico road map showing existing black top roads. Directions to the location (outlined in red on map) from Eunice, New Mexico are as follows: from the blinking light at Conoco station in Eunice, travel 2.5 miles south; turn west on Delaware Basin Road and go 32.2 miles to Highway No. 128; turn west and travel 4.9 miles; turn northwest on caliche road and go 2.3 miles and turn west .4 mile, turn south .2 mile, turn west .2 mile, turn south .2 mile and the location road stakes are on the west side of the road.
- C,D,E. The access roads are shown on Exhibits "B" and "C".
- F. No improvement or maintenance are anticipated for the existing roads.

2. Planned Access Roads

- A. Width and Length: New road required will be 12 feet wide and 1250 feet long. This new road is labeled and color coded on Exhibits "B" and "C". (staked)
- B. Turnouts: One passing turnout will be constructed.
- C. Drainage Design: New road will have a drop of 6 inches from center line on each side.
- D. Culverts, Cuts and Fills: Culverts - None. The location cut will be 100' from southwest to northeast.
- E. Surfacing Material: Six inches of caliche, bladed, watered and compacted.

F. Cates, Cattleguards, Fences: One cattleguard will be installed in fence approximately 3/4 mile northeast of the well site on existing road.

G. The proposed road is staked.

3. Location of Existing Wells: See Exhibit "D".

4. Location of Existing and/or Proposed Facilities:

A. Tank Batteries:

The existing tank battery is located in the NE/4 of Section 12 and located on Exhibit "D".

B. Producing Facilities:

No additional producing facilities are required.

C. Oil Gathering Lines:

The flowline will follow the road to the tank battery (not buried) as shown on Exhibit "D".

D. Other Lines:

No additional gas gathering, injection or disposal lines will be required.

E. Rehabilitation:

Pits will be backfilled and leveled as soon as practical to original condition. Commencement of rehabilitation operations will immediately follow removal of drilling and completion equipment from location and rehabilitation of the surface is planned to be completed within 45 days from commencement.

F. Power Lines:

Approximately 990' of new proposed power line will be required as shown on plat for the power distribution.

5. Water Supply - The fresh water will be hauled from Carl Johnson Water Station in Section 16, T-24S, R-33E on the north side of Highway 128. The salt water will be hauled from Teleydene Water Station approximately 7 miles east of Loving on side of Highway 128.

6. Source of Construction Materials:

- A. Caliche for surfacing the new road and the well pad will be obtained from an existing pit in the NW/4 NE/4 of Section 7, T-24S, R-32E as shown on Exhibits "B" and "C".
- B. Caliche to be purchased from BLM by the dirt contractor.
- C. The caliche to be hauled, from the location, go 1250' east; north .2 mile; east .2 mile; north .2 mile; east .4 mile; south .2 mile and the pit is on the east side of road.

7. Methods for Handling Waste Disposal:

Waste Disposal:

Well cuttings will be disposed in reserve pit. Barrel trash containers to be in accessible locations within drill site area during drilling and completion procedures. All detrimental waste will be hauled away, burned or buried with a minimum cover of 24" of dirt. See Exhibit "E" for location of pits. If well is productive, maintenance waste will be placed in special trash cans and hauled away periodically. Any produced water will be collected in tanks until hauled to an approved disposal system, or separate disposal applications will be submitted to the survey for appropriate approval.

8. Ancillary Facilities: None

9. Well Site Layout:

Exhibit "E" shows the relative location and dimensions of the well pad, mud pit, reserve pit, trash barrel, etc. The reserve pit will be lined with plastic. The pad and pits are staked.

10. Plans for Restoration of Surface:

Pits will be backfilled and leveled as soon as practical to original condition. Commencement of rehabilitation operations will immediately follow removal of drilling and completion equipment from location and rehabilitation of the surface is planned to be completed within 45 days from commencement.

11. Other Information:

- a. Terrain - Low rolling sand hills. See Exhibit "B", topographic map of area.
- b. Soil - Sandy.
- c. Vegetation - Mesquite and grass.
- d. Surface Use - Grazing.

- e. Ponds and Streams - None within one mile.
- f. Water Wells - Four miles west of location.
- g. Residences and Buildings - Four miles west of location.
- h. Arroyos, Canyons, Etc. - There are no significant surface features, see attached Exhibit "B".
- i. Well Sign - Sign identifying and locating well will be maintained at drill site with the spudding of the well.
- j. Open Pits - All pits containing mud or other liquids will be fenced.
- k. Archaeological Resources - None observed.

12. Operator's Representative - Field personnel who can be contacted concerning compliance of this Surface Use Plan area as follows:

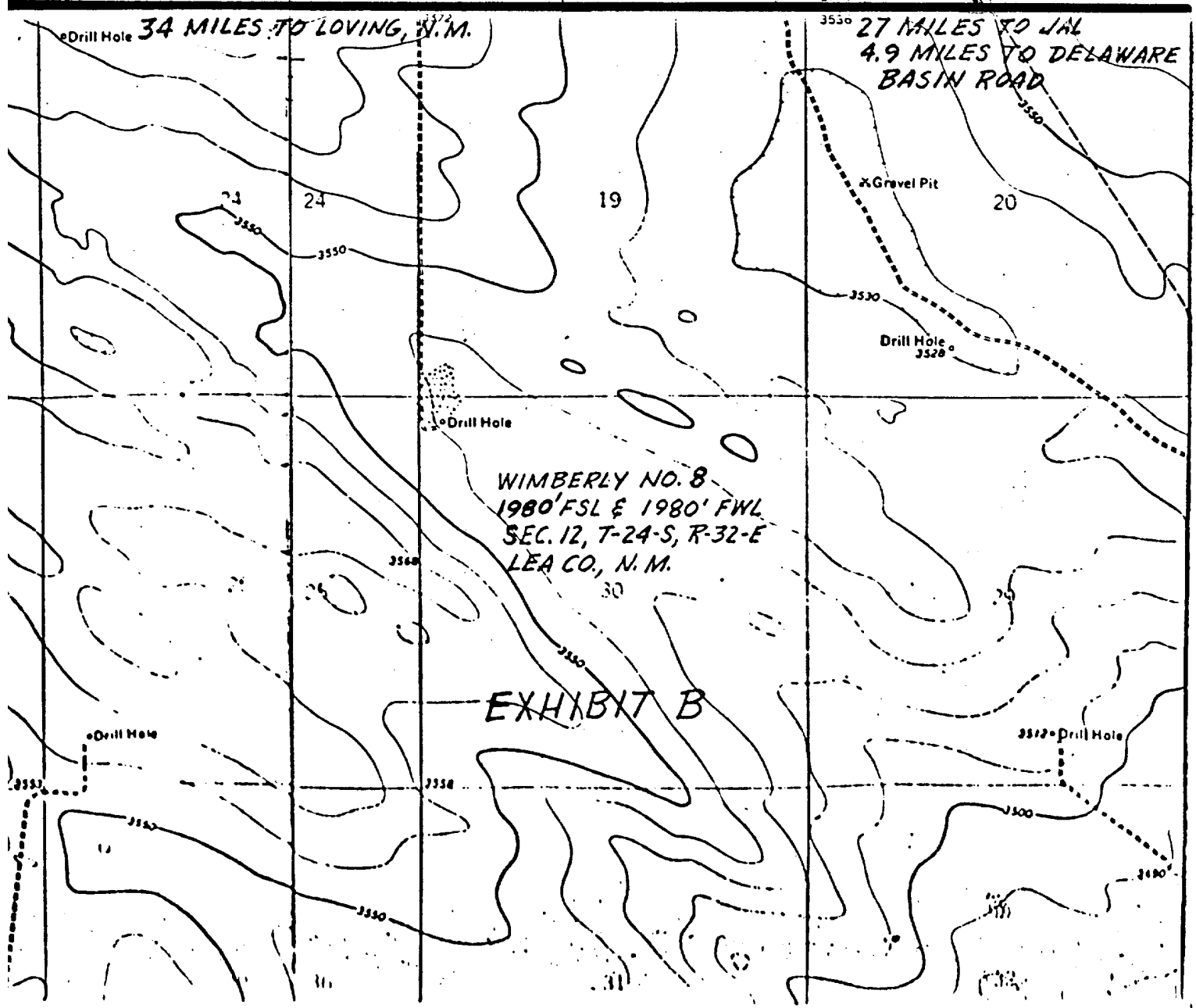
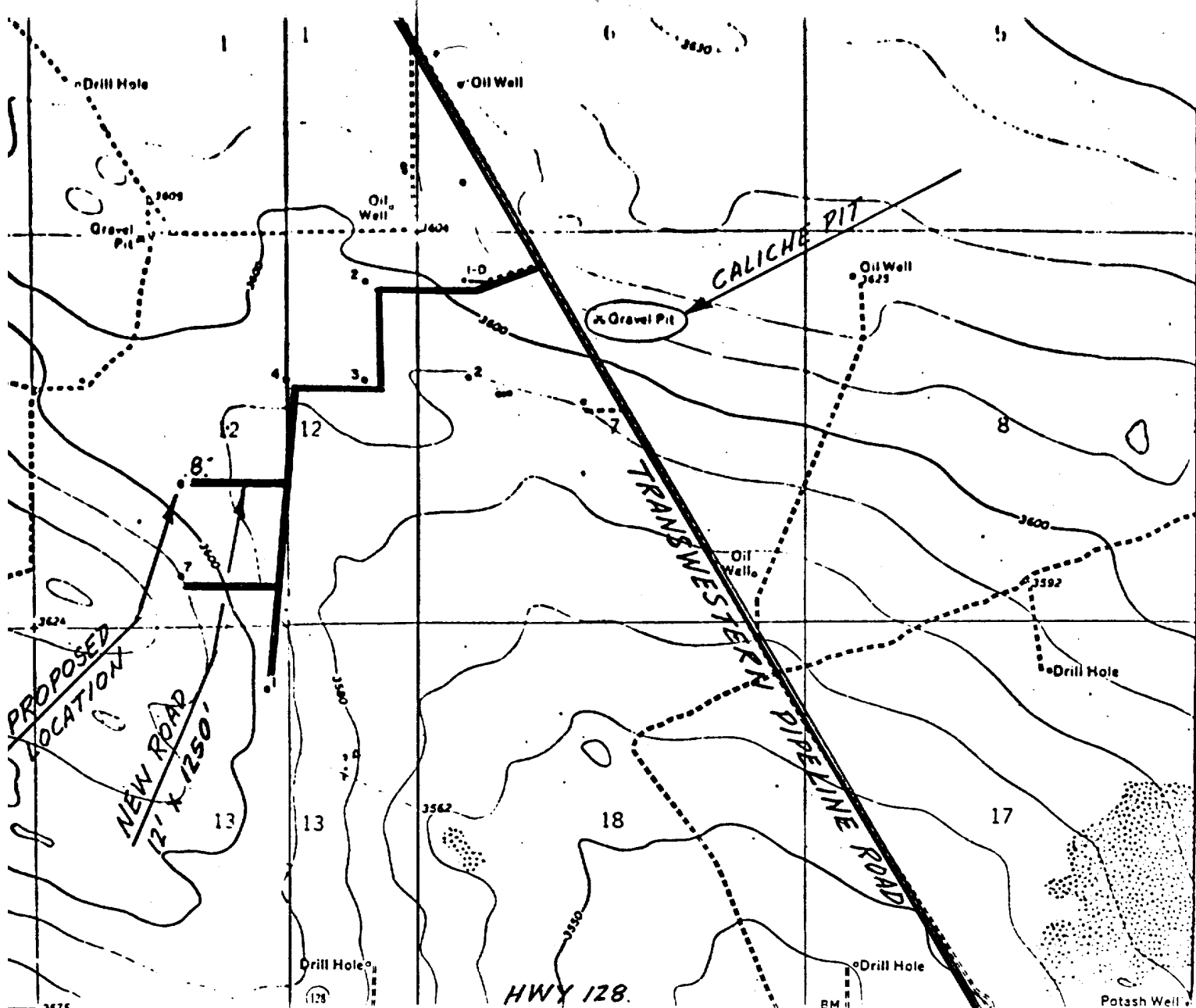
Production and Drilling
C. R. Paschal, D. A. Sowers or L. P. Thompson
1001 North Turner
Hobbs, New Mexico 88240
Phone: 393-4141

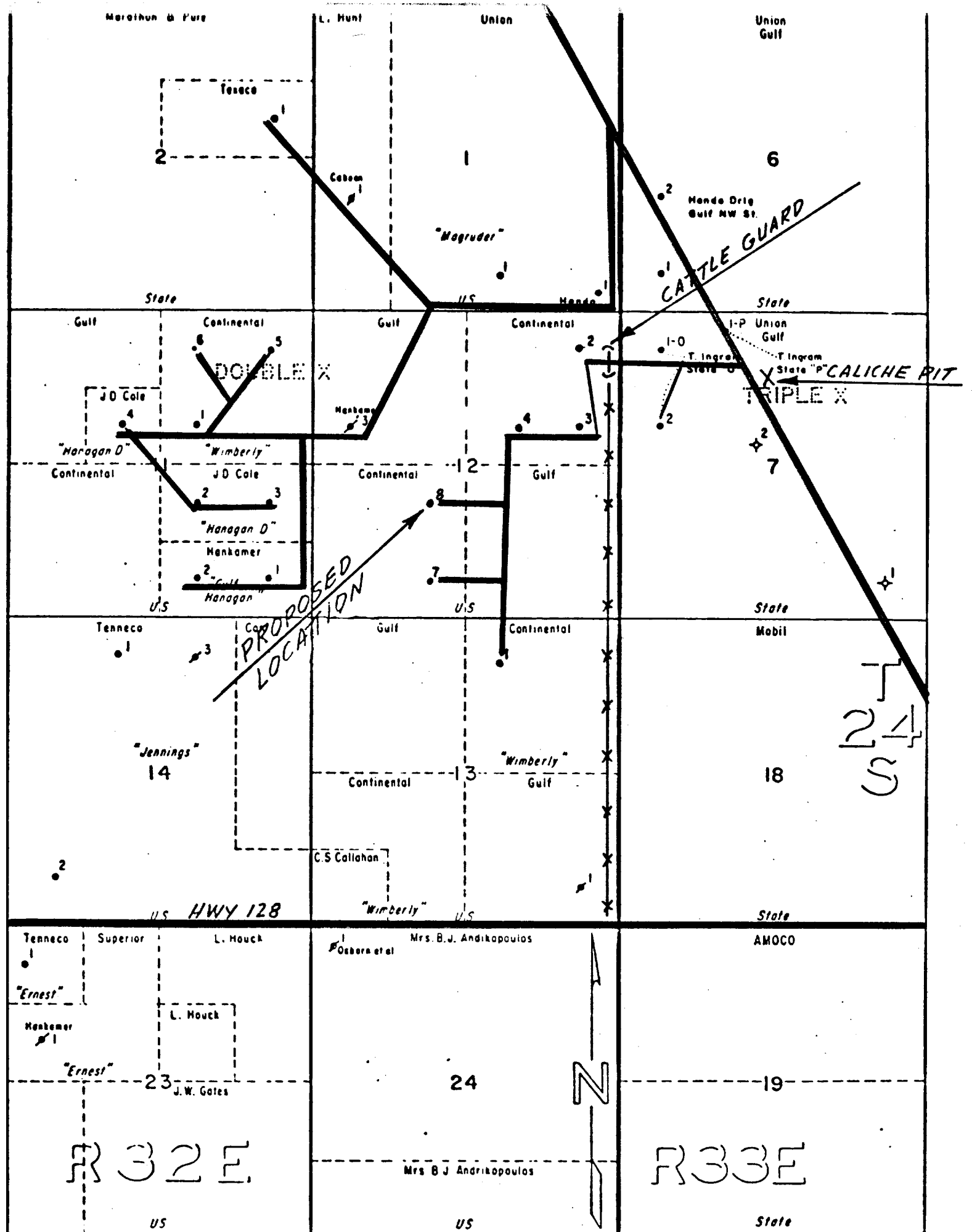
13. Certification - I hereby certify that I, or persons under my direct supervision, have inspected the proposed drill site and access route; that I am familiar with the conditions which presently exist; that the statements made in this plan are, to the best of my knowledge, true and correct; and that the work associated with the operations proposed herein will be performed by Continental Oil Company and its contractors and sub-contractors in conformity with this plan and the terms and conditions under which it is approved.

3 - 29 - 77

Date

David A. Sowers



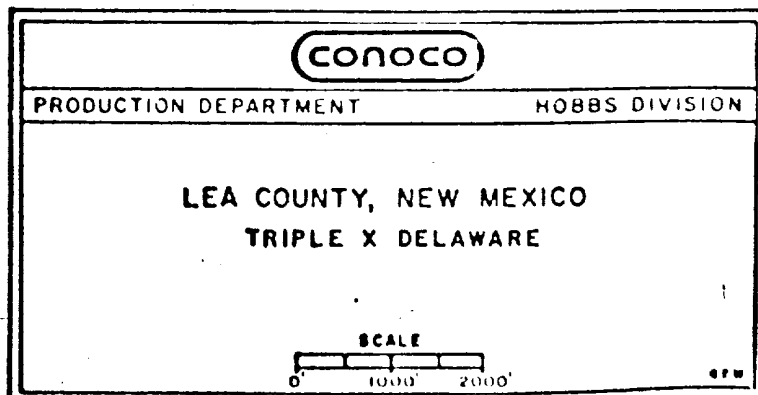


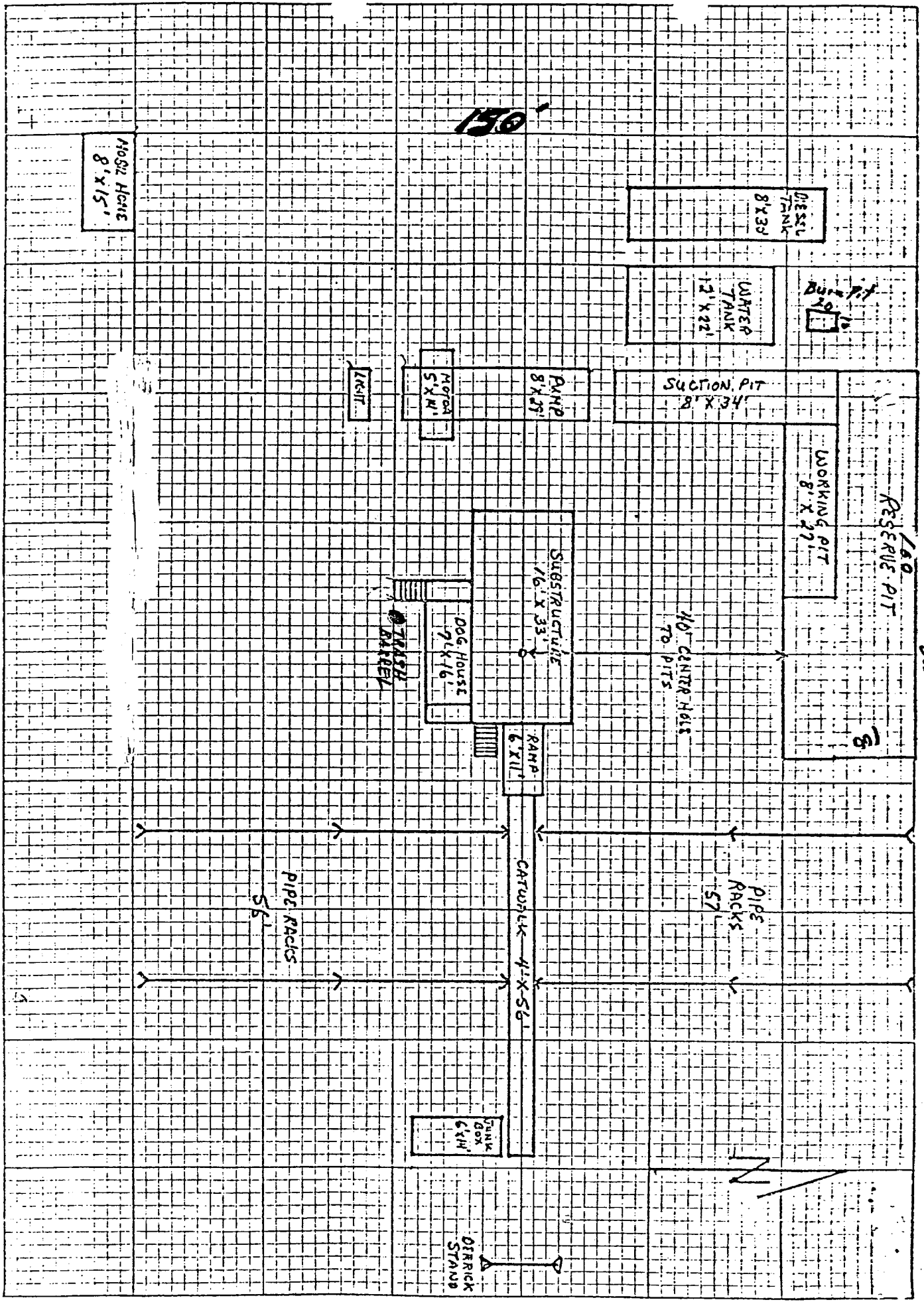
WIMBERLY NO. 8
1980' FSL & 1980' FWL
SEC. 12, T-24-S, R-32-E
LEA CO., N.M.

- EXISTING CALICHE ROADS
- NEW ROAD
- HIGHWAY 128
- (—) CATTLE GUARD
- *** FENCE
- X CALICHE PIT

CONOCO	
PRODUCTION DEPARTMENT	HOBBS DIVISION
LEA COUNTY, NEW MEXICO TRIPLE X DELAWARE	
SCALE 0' 1000' 2000'	

EXHIBIT C



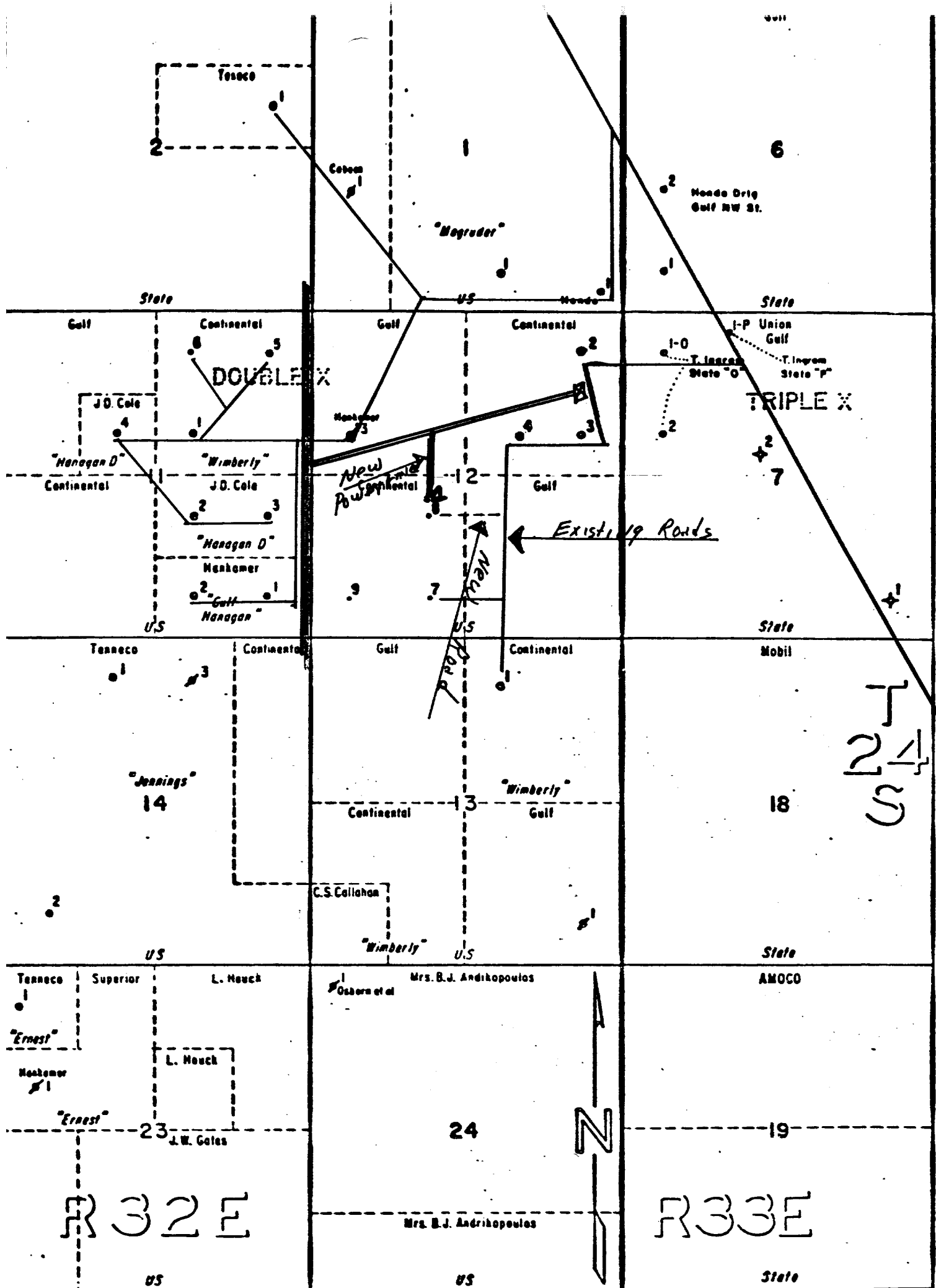


EV LIND T "E"
 MILLER IN NO. 8
 CANTON, TN 37010

Continental Oil Company
WIMBERLY No. 8 Power Distribution

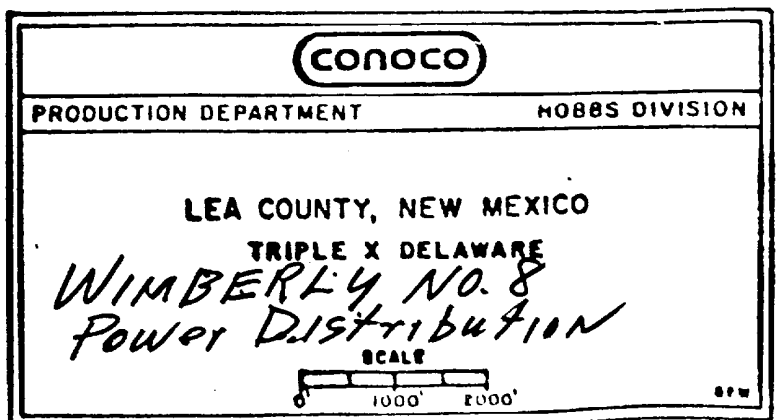
A Plot is attached showing the proposed Well location, existing roads, new road, existing power lines, proposed power line, also drawings of the Pole design.

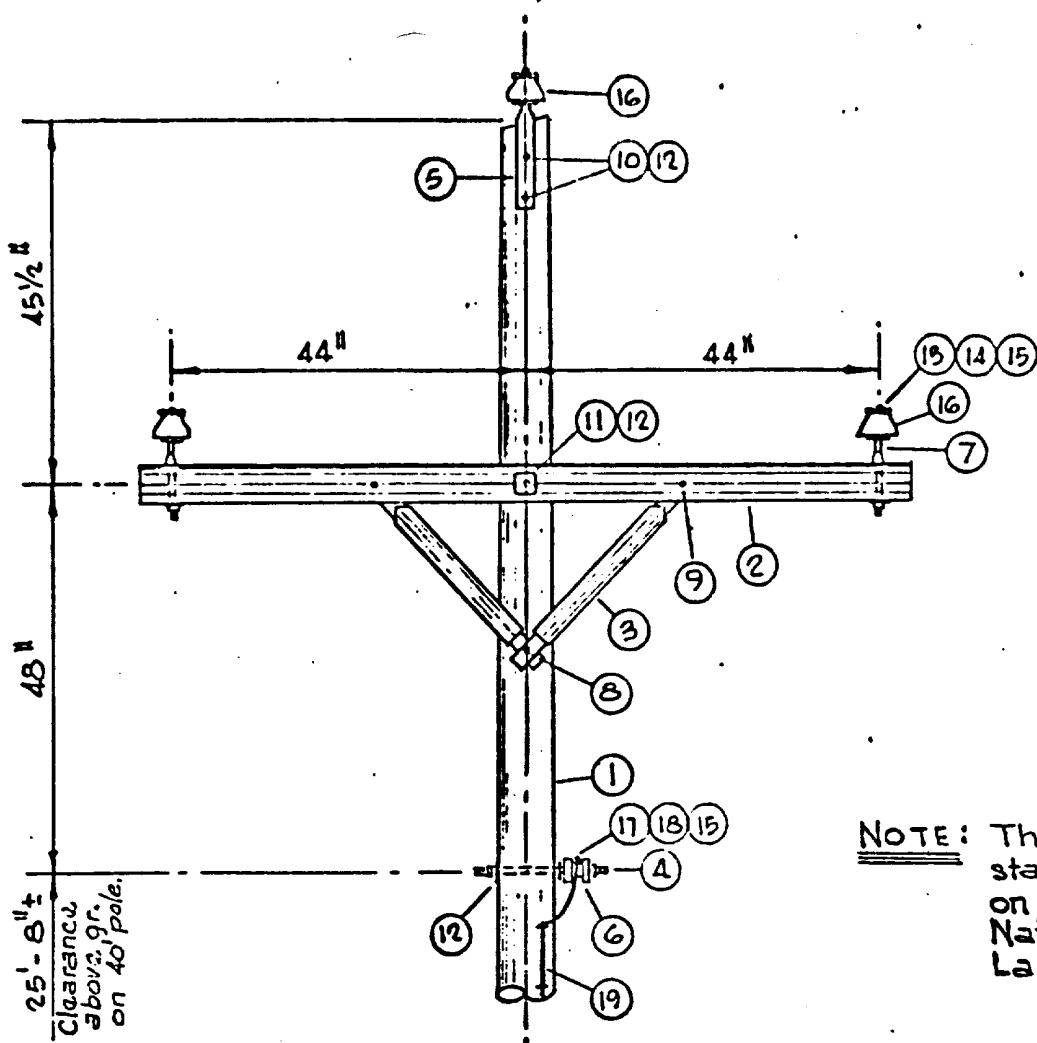
It is proposed to tie-in to an existing primary line and construct 3 spans (990') of primary line. The poles will be approximately 330' apart, 2-line poles and 1 pole with transformer bank. A 20' Right-of-Way will be required to install this line,



Producing & Proposed Oil Wells

- Injection Wells
- Existing Roads
- New Mexico Elec. Primary
- Existing Primary Line (CONOCO)
- Proposed Primary Line (CONOCO)
- Proposed Transformer Bank
- 3-330' Primary Spins - 40' Poles
- 20' Right-of-Way
- Existing Tank Bldg. Power Ditch





MATERIAL

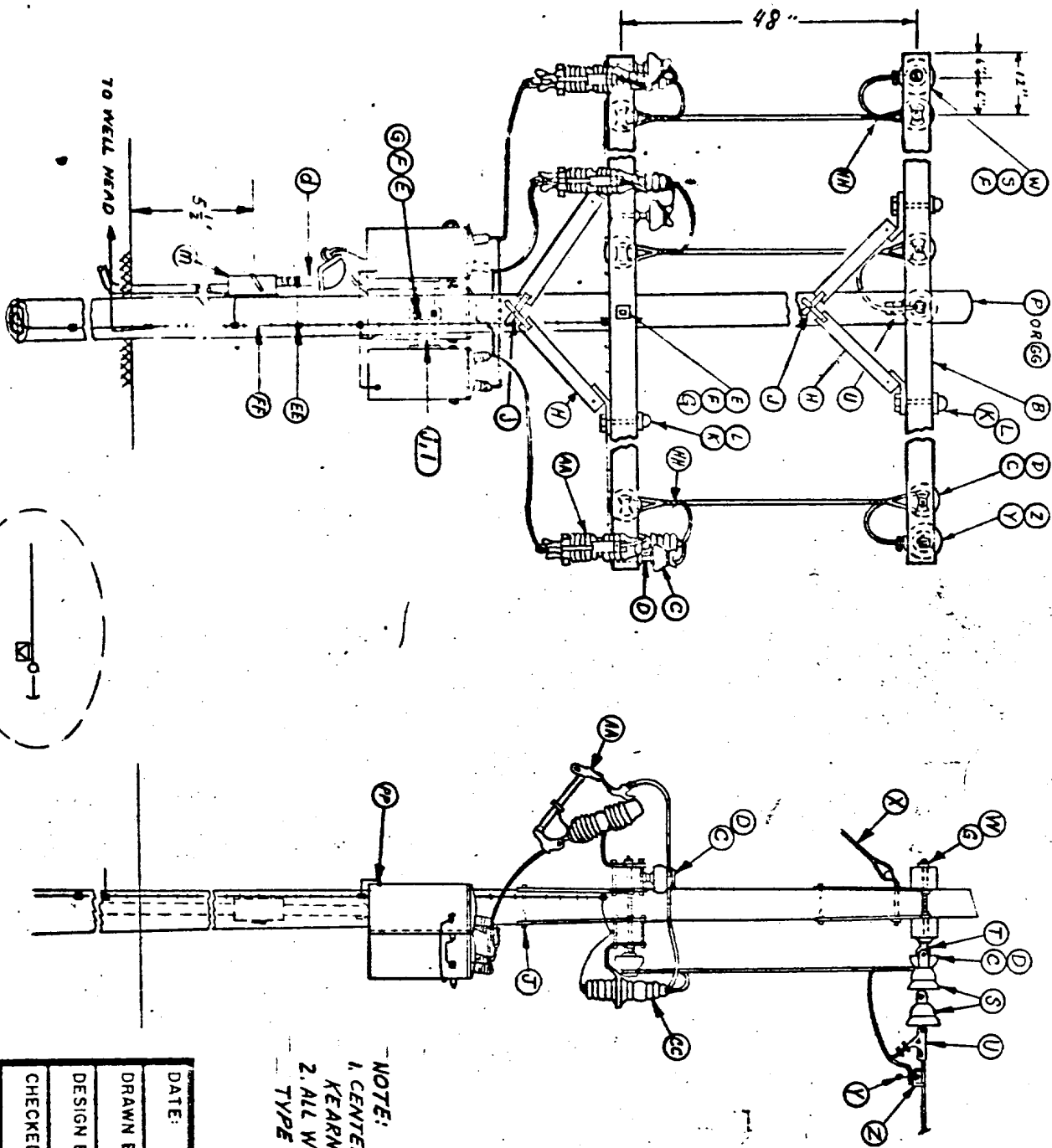
ITEM	REQD.	DESCRIPTION	ITEM	REQD.	
1	1	Pole, 40'	17	—	Neutral Conductor
2	1	Crossarm, 3 1/2" x 4 1/2" x 8'	18	1	Armor Rod
3	2	Brace, Wood	19	5 #	Pole Ground Wire, #6 Cu.
4	1	Stud Rack			
5	1	Ridge Pin, 15"			
6	1	Spool Insulator			
7	2	Steel Pin, 5/8" x 5"			
8	1	Lag Screw, 1/2" x 4"			
9	2	Carriage Bolt, 3/8" x 4 1/2"			
10	2	Machine Bolt, 5/8" x 10"			
11	1	Machine Bolt, 5/8" x 14"			
12	5	Washer, 2 1/4" Sq.			
13	—	Phase Conductor			
14	3	Armor Rod			
15	1 #	Tie Wire, #6 Al.			
16	3	Pin Insulator, 9 KV			

NOTE: All bolts will have locknuts.

REVISIONS			DATE:	TITLE:	
Q.	DESCRIPTION	DATE	BY:	PRIMARY IN LINE POLE	
			4-22-77	12,500 volt ACSR	
			DRAWN BY:	<div style="text-align: center;"> </div>	
			DESIGN BY:		
			CHECKED BY: SK		
			APPROVED BY:		
			SCALE: NONE	PRODUCTION DEPT.	HOBBS DIVISION
				JOB:	DRAWING NO:
				ELEC SPROS	ES-24

STARPAT PRODUCTS INC., FORT WASHINGTON, O.S.

WIMBERLY NO. 8
REVISED DRAWINGS



ITEM	QTY	REF
B	4	
C	9	
D	9	
E	3	
F	24	
G	12	
H	8	
J	4	
K	8	
L	8	
PORGG	1	ES-1A, NOTE 5
S	6	
T	3	
U	3	
W	5	
X	1	
Y	3	
Z	3	
AA	3	
CC	3	
EE	8	
FF	1	
HH	6	
D	1	
J.I	1	ES-1A, NOTE 2
M	1	
PP	3	

NOTE:
 1. CENTER PHASE ON BANK WILL HAVE EPOXY INS.
 KEARNRY NO. 323015-24 INSULATOR.
 2. ALL WIRE FROM POINT "U" WILL BE INSULATED
 TYPE WIRE ON TRANSFORMER BANK.

DATE:	12-13-71	TITLE:	SINGLE POLE SUBSTA. 1PH. TRANS. CLUSTER MOUNT PRIM. DEAD-END-12500/480V AGSR
DRAWN BY:	AKD	DESIGN BY:	AKD
CHECKED BY:		PRODUCTION DEPT.	CONOCO
APPROVED BY:		JOB:	ELC SPECS
SCALE:	NONE	DRAWING NO.:	ES-9

WIMBERLY NO. 8
 REVISED DRAWINGS

ITEM	DESCRIPTION	A. B. CHANCE NO.	JOSLYN NO.	OTHER MFRS. NO.	NO. SUB.
A	35' class 6 creosoted pine pole				
B	3 1/2" x 4 1/2" x 8' treated crossarm				
C	high density wet process porcelain pin insulator		463		
D	5/8" x 3" forged steel pin w/eq. washer, nut, & locknut	881			
E	5/8" x 12" machine bolt w/ nut (or length req'd)	8812			
F	2 1/4" x 2 1/4" x 3/16" x 11/16" hole sq. washer	6813			
G	5/8" MF locknut	3512			
H	wood crossarm brace 1 5/8" x 2 5/8" x 59"			GARY BAR #217	X
J	1/2" x 4" EZ Fetter Drive Log Screw	508754			
K	3/8" x 4 1/2" Carriage Bolt w/ Nut	8634 1/2			
L	3/8" MF locknut	3510			
M	preformed Aluminum Alloy Armor Rods, size req'd				
N	tie wire #6 strong alum. alloy				
O					
P	40' class 5 creosoted pine pole				
R	Aluminum double tab Squeeze on Connector for ACSR, Aluminum, or Copper-size req'd			HEARNEY SERIES "R1"	X
S	6" Suspension Insulator	66200			
T	5/8" Standard Oval Eye Nut	6502			
U	Primary Dead End Clamp		44050		
W	5/8" x 18" (or length req'd) Double Arming Bolt w/4 sq. nuts	8868			
X	guying detail - see detg No. ES-10 for specs.				
Y	Hot Line Clamp				
Z	Squeeze on basket, also required	515204GP		HEARNEY	X

DATE: 12-27-71		TITLE: DESCRIPTION MATERIALS	
DRAWN BY: E. WINTER			
DESIGN BY:			
CHECKED BY:			
APPROVED BY:			
SCALE: NONE		JOB: PRODUCTION DEPT. HOBBBS DIVISION	
ELEC SPECS		DRAWING NO: ES-1	
		SHEET 1 OF 3	

WIMBERLY NO. 8
REVISED DRAWINGS

ITEM	DESCRIPTION	A. B. CHANCE NO.	JOSLYN NO.	OTHER MERS. NO.	NO SUB.
AA	Primary Cutout - 100 amp, 15 KV, 16000 amp int. cap.	F2AK1015G			X
BB	General Purpose "U" bolt clamp	UC310AGP			
CC	Lightening arrester, 10 KV				
DD	Single phase oil switch, 16.4 KV			MGRAL-EDISON KVMC2	
EE	split bolt connector, size req'd			BLACK BURN W STYLES	
FF	grounding spec. see dwg No. ES-11 & ES-1A, Note 3				
GG	35' class 4 creosoted pine pole				
HH	Aluminum deadend Preforms for ACSR, size req'd				
JJ	30' class 6 creosoted pine pole				
KK	OVERHEAD GRND, #4 ACSR - If Req'd - Ref. DWG ES-11, ES-1A - Note 3				
LL	ground connector, motor			ALUMINUM KVC-22	X
MM	600 V. secondary lightening arrester single phase				
NN	Greenfield Type FF liquid-tight flexible steel conduit, size req'd, w/ necessary liquid-tight connectors.				
OO	req'd size LB fitting & cover & gasket				
PP	transformer tank grounding terminal	GW5-15			

DATE:	12-27-71	TITLE:	DESCRIPTION MATERIAL
DRAWN BY:	E. WINTER	<div>CONOCO</div> HOBBS DIVISION	
DESIGN BY:			
CHECKED BY:			
APPROVED BY:			
SCALE:	NONE	JOB:	PROD. DEPT.

WINIMBERLY NO.8
REVISED DRAWINGS

ITEM	DESCRIPTION	A. B. CHANCE NO.	JOSLYN NO.	OTHER MFRS. NO.	NO SUB.
a	double unset bolt s/eq. nut, round washer, and cotter key on short end, eq. nut and 1/4" locknut on long end, 15 1/8" long (or length required.)	7828			
b	wet process porcelain secondary spool insulator, 3" brown glaze		1101		
d	required size conduit w/ servicehead(s) & req'd size & rated insulated conductors. Ref. Dwg ES-1B				
e	Note: provide clamp and ground conduit parallel groove clamp, size req'd			ALUMINUM SERIES "UC"	
f	secondary insulator clevis for 4" insulator	6510			
g	5/8" thimble nut				
h	5/8" x 12" (or length req'd) straight thimble nut	5512			
j	bolt w/eq. nut			ALUMINUM FORM 6M3-6	X
k	transformer cluster mount bracket (small)			ALUMINUM FORM 15M3-6	X
l	transformer cluster mount bracket (large)				
m	req'd size raintight disconnect & fuses, 3-phase, 600 V. Ref. Dwg No. ES-1H				
n	16" cross plate anchor (or size req'd)	X-16 88135			
q	8-way expanding anchor (size req'd)		10101		
t	4" brown glaze wet process porcelain secondary spool insulator				
u	5/8" x 7' thimble anchor rod w/nut (use twineye if req'd - Chance No. 5367)	5317 (NUT 55006P)			
ae	3/8" high strength guy strand (10,800 lb.)				
bb	preformed guy grip for 3/8" guy strand	5010			
dd	5/8" x 10" angle thimble bolt w/nut	6813 1/2			X
ee	3"x3"x1/4"x11/16" hole curved washer				
ff	6" - guy clamp w/3-1/2" bolts				
gg	medium size strain insulator				
hh	serving sleeve for 3/8" guy strand	6454			
jj	3/16" x 2-1/2" x 7" lift plate	7887			X
nn	pole bottom ground plate (may use butt-wrap if desired)				
qq	Ground connection (See Dwg. ES-1Z)				
rr	wet process porcelain secondary spool insulator, 3" - white glaze				
tt	wet process porcelain secondary spool insulator, 4" - white glaze				

DATE: 12-27-71		TITLE: DESCRIPTION MATERIALS	
DRAWN BY: E. WINTER		<div style="text-align: center;"> CONOCO </div> <div style="text-align: right;"> HOBBS DIVISION </div>	
DESIGN BY:			
CHECKED BY:			
APPROVED BY:			
SCALE: NONE		JOB: ELEC SPECS	DRAWING NO.: ES-1
		SHEET 3 OF 3	

WIMBERLY NO. 8
REVISED DRAWINGS

U. S. Geological Survey

HOBBS DISTRICT

Continental Oil Company No. 8 Wimberly NE $\frac{1}{4}$ SW $\frac{1}{4}$ sec. 12-24S-32E Lea County, N. M.

Above Data Required on Well Sign

CONDITIONS OF APPROVAL

1. Drilling operations authorized are subject to compliance with the attached General Requirements for Drilling Operations on Federal Oil and Gas Leases, dated January 1, 1977.
2. Notify this office (telephone (505) 393-3612) when the well is to be spudded and in sufficient time for a representative to witness all cementing operations. Attached are names and telephone numbers of Geological Survey and Bureau of Land Management personnel who are available for consultation during construction, drilling, completion, and rehabilitation activities.
3. Immediate notice is required of all blowouts, fires, spills, and accidents involving life-threatening injuries or loss of life.
4. Secure prior approval of the District Engineer for variance from the approved drilling program and before commencing plugging operations, plug-back work, casing repair work, corrective cementing operations, or suspending drilling operations indefinitely.
5. Blowout prevention equipment is to be installed, tested, and in working order before drilling below the surface casing and shall be maintained ready for use until drilling operations are completed.
6. All pits found to contain toxic liquids will be fenced and covered with a fine-mesh netting for the protection of wildlife as directed by the responsible BLM representative.
7. In the event the oil or gas test results in a dry hole, the drill pad and access road will be ripped in accordance with "BLM Roswell Districts' Ripping Recommendations for Caliche or Compacted Drill Pads and Access Roads" (3109).
8. All structures and pipelines above ground, not subject to applicable conservation and safety requirements, should be painted a non-glare, non-reflective, non-chalking color that simulates the natural colors of the site. The Federal Standard Number to be used is Fed. Stand. 595, Color 30318.
9. For powerline stipulations, see attached drawing and comments labeled x-y-z.