

NEW MEXICO OIL CONSERVATION COMMISSION
WELL LOCATION AND ACREAGE DEDICATION PLAT

Form C-123
Supersedes C-123
Effective 1-1-65

All distances must be from the outer boundaries of the Section.

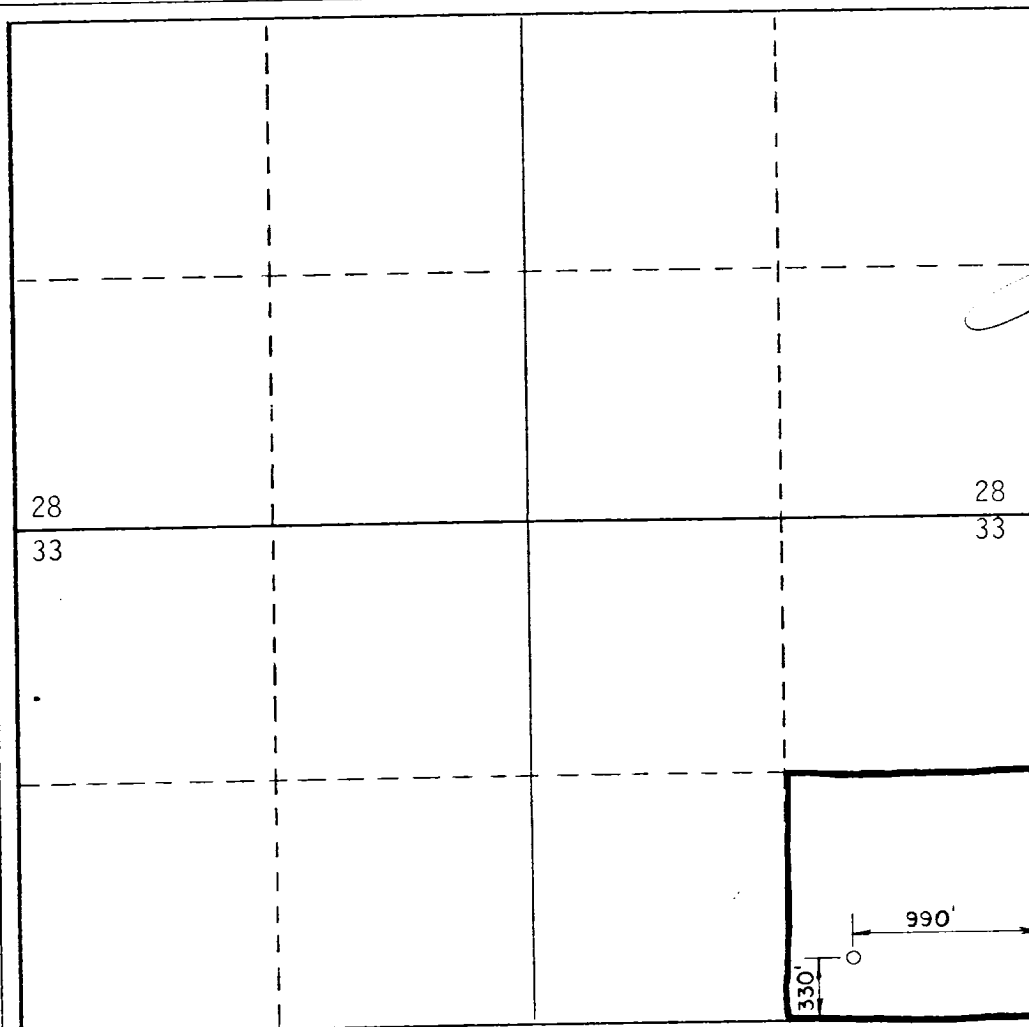
Operator GIFFORD, MITCHELL & WISENBAKER		Lease HORSE BACK		Well No. 5
Unit 33	Section 33	Township 26 South	Range 36 East	County Lea
Actual Plotting Location of Well: 330 feet from the south line and 990 feet from the east line				
Ground Level Elev. 2902'	Producing Formation Capitan Reef	Pool Comanche (Stateline)	Dedicated Acreage 40 Acres	

1. Outline the acreage dedicated to the subject well by colored pencil or hachure marks on the plat below.
2. If more than one lease is dedicated to the well, outline each and identify the ownership thereof (both as to working interest and royalty).
3. If more than one lease of different ownership is dedicated to the well, have the interests of all owners been consolidated by communitization, unitization, force-pooling, etc?

☐ Yes ☐ No If answer is "yes," type of consolidation _____

If answer is "no," list the owners and tract descriptions which have actually been consolidated. (Use reverse side of this form if necessary.) _____

No allowable will be assigned to the well until all interests have been consolidated (by communitization, unitization, forced-pooling, or otherwise) or until a non-standard unit, eliminating such interests, has been approved by the Commission.



CERTIFICATION

I hereby certify that the information contained herein is true and complete to the best of my knowledge and belief.

Name

Position

Production Clerk

Company

Gifford, Mitchell & Wisenbaker

Date

4/20/78

I hereby certify that the well location shown on this plat was plotted from field notes of actual surveys made by me or under my supervision, and that the same is true and correct to the best of my knowledge and belief.

April 11, 1978

Date Surveyed

Gary N. Haner

Registered Professional Engineer

GARY

HANER

No. 5657

Certificate No.

5657

PROFESSIONAL ENGINEER

