

NO. OF COPIES RECEIVED		
DISTRIBUTION		
SANTA FE		
FILE		
U.S.G.S.		
LAND OFFICE		
OPERATOR		

NEW MEXICO OIL CONSERVATION COMMISSION

Form C-101
Revised 1-1-65

5A. Indicate Type of Lease	
STATE <input checked="" type="checkbox"/>	FEE <input type="checkbox"/>
5. State Oil & Gas Lease No.	
3002	
7. Unit Agreement Name	
8. Farm or Lease Name	
New Mexico CV State	
9. Well No.	
1	
10. Field and Pool, or Wildcat	
Scarborough Yates, West	
12. County	
Lea	
19. Proposed Depth	19A. Formation
3400	Yates
20. Rotary or C.T.	
Rotary	
21. Elevations (Show whether DF, RT, etc.)	22. Approx. Date Work will start
To be filed later	June 1, 1978

1a. Type of Work	
b. Type of Well	
DRILL <input checked="" type="checkbox"/>	DEEPEN <input type="checkbox"/>
OIL WELL <input checked="" type="checkbox"/>	GAS WELL <input type="checkbox"/>
OTHER <input type="checkbox"/>	
2. Name of Operator	
EXXON CORPORATION	
3. Address of Operator	
P. O. BOX 1600, MIDLAND, TEXAS 79701	
4. Location of Well	
UNIT LETTER J	LOCATED 1644 FEET FROM THE south LINE
AND 2311 FEET FROM THE east	LINE OF SEC. 28 TWP. 26S RGE. 36E NMPM
19. Proposed Depth	
3400	
19A. Formation	
Yates	
20. Rotary or C.T.	
Rotary	
21. Elevations (Show whether DF, RT, etc.)	22. Approx. Date Work will start
To be filed later	June 1, 1978

23. PROPOSED CASING AND CEMENT PROGRAM					
SIZE OF HOLE	SIZE OF CASING	WEIGHT PER FOOT	SETTING DEPTH	SACKS OF CEMENT	EST. TOP
12-1/2 or 11"	8-5/8	24	1300	700	Surface
7-7/8"	5-1/2	14	3400	300	2000'

Proposed Mud Program

Depth Interval	Type	Weight
0-1300	Fresh Water Mud	9.0-9.1
1300-3400	Fresh Water Mud	9.0-9.2

Howco method of cementing to be used. A diagrammatic sketch and specifications of Blowout Preventer equipment is attached.

IN ABOVE SPACE DESCRIBE PROPOSED PROGRAM; IF PROPOSAL IS TO DEEPEN OR PLUG BACK, GIVE DATA ON PRESENT PRODUCTIVE ZONE AND PROPOSED NEW PRODUCTIVE ZONE. GIVE BLOWOUT PREVENTER PROGRAM, IF ANY.

I hereby certify that the information above is true and complete to the best of my knowledge and belief.

Signed Melba Knipling Title Proration Specialist Date May 18, 1978
(This space for State Use)

APPROVED BY [Signature] TITLE SUPERVISOR DISTRICT I DATE MAY 28 1978
CONDITIONS OF APPROVAL, IF ANY:

Exxon Lse. No. _____ NEW MEXICO OIL CONSERVATION COMMISSION
State Lse. No. _____ WELL LOCATION AND ACREAGE DEDICATION PL.
Federal Lse. No. _____ All distances must be from the outer boundaries of the Section.

Form C-102
Supersedes C-128
Effective 1-1-65

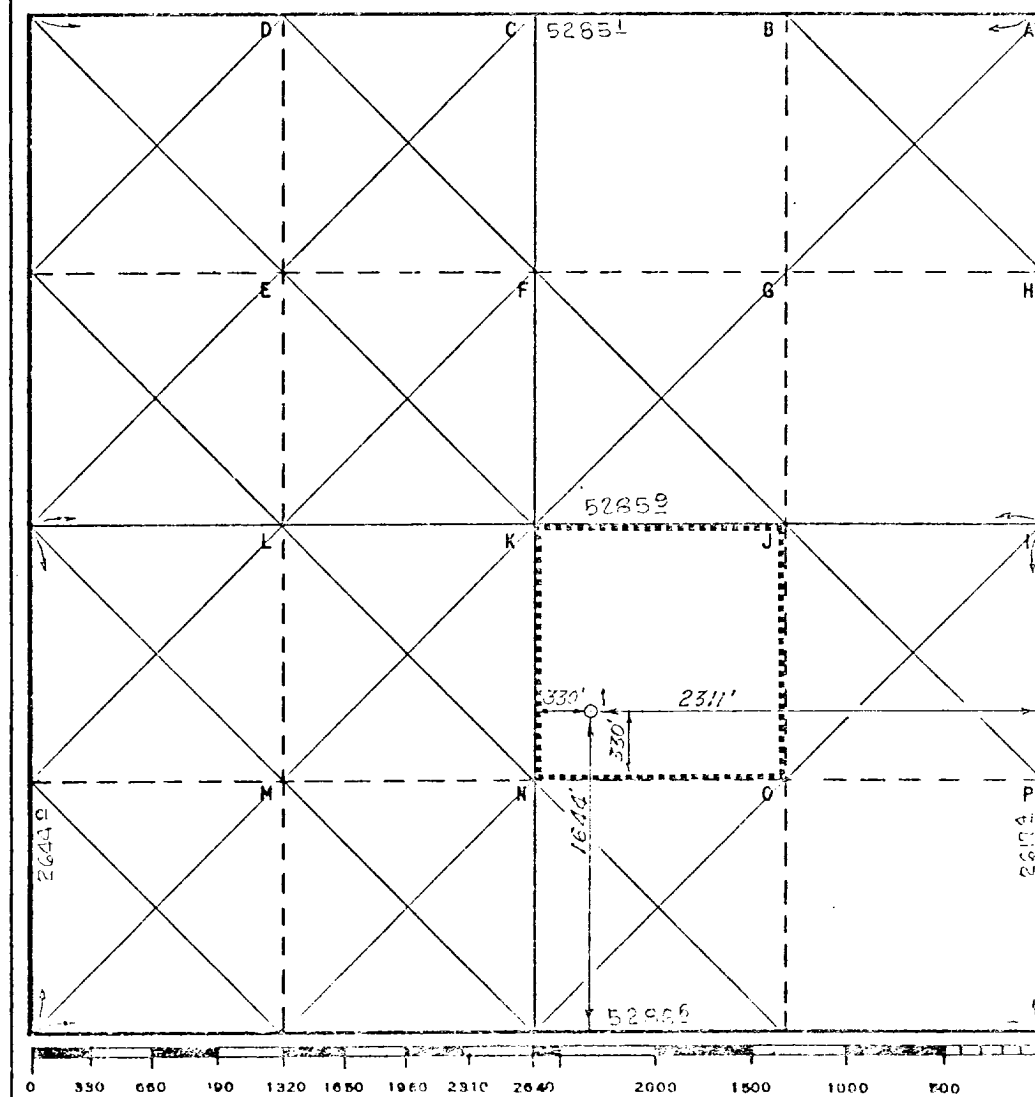
Operator Exxon Corporation		Lease New Mexico CV State		Well No. 1
Unit Letter J	Section 28	Township 26 S	Range 36 E	County Lea
Actual Footage Location of Well: 1644 feet from the South line and 2311 feet from the East line				
Ground Level Elev:	Producing Formation Yates	Pool Scarborough Yates, West	Dedicated Acreage: 40 Acres	

1. Outline the acreage dedicated to the subject well by colored pencil or hatchure marks on the plat below.
2. If more than one lease is dedicated to the well, outline each and identify the ownership thereof (both as to working interest and royalty).
3. If more than one lease of different ownership is dedicated to the well, have the interests of all owners been consolidated by communitization, unitization, force-pooling, etc?

☐ Yes ☐ No If answer is "yes," type of consolidation _____

If answer is "no," list the owners and tract descriptions which have actually been consolidated. (Use reverse side of this form if necessary.) _____

No allowable will be assigned to the well until all interests have been consolidated (by communitization, unitization, forced-pooling, or otherwise) or until a non-standard unit, eliminating such interests, has been approved by the Commission.



CERTIFICATION

I hereby certify that the information contained herein is true and complete to the best of my knowledge and belief.

Name
Melvin Kripling
Position
Proration Specialist

Company Exxon Corporation
Box 1600 Midland, Texas

Date
May 17, 1978

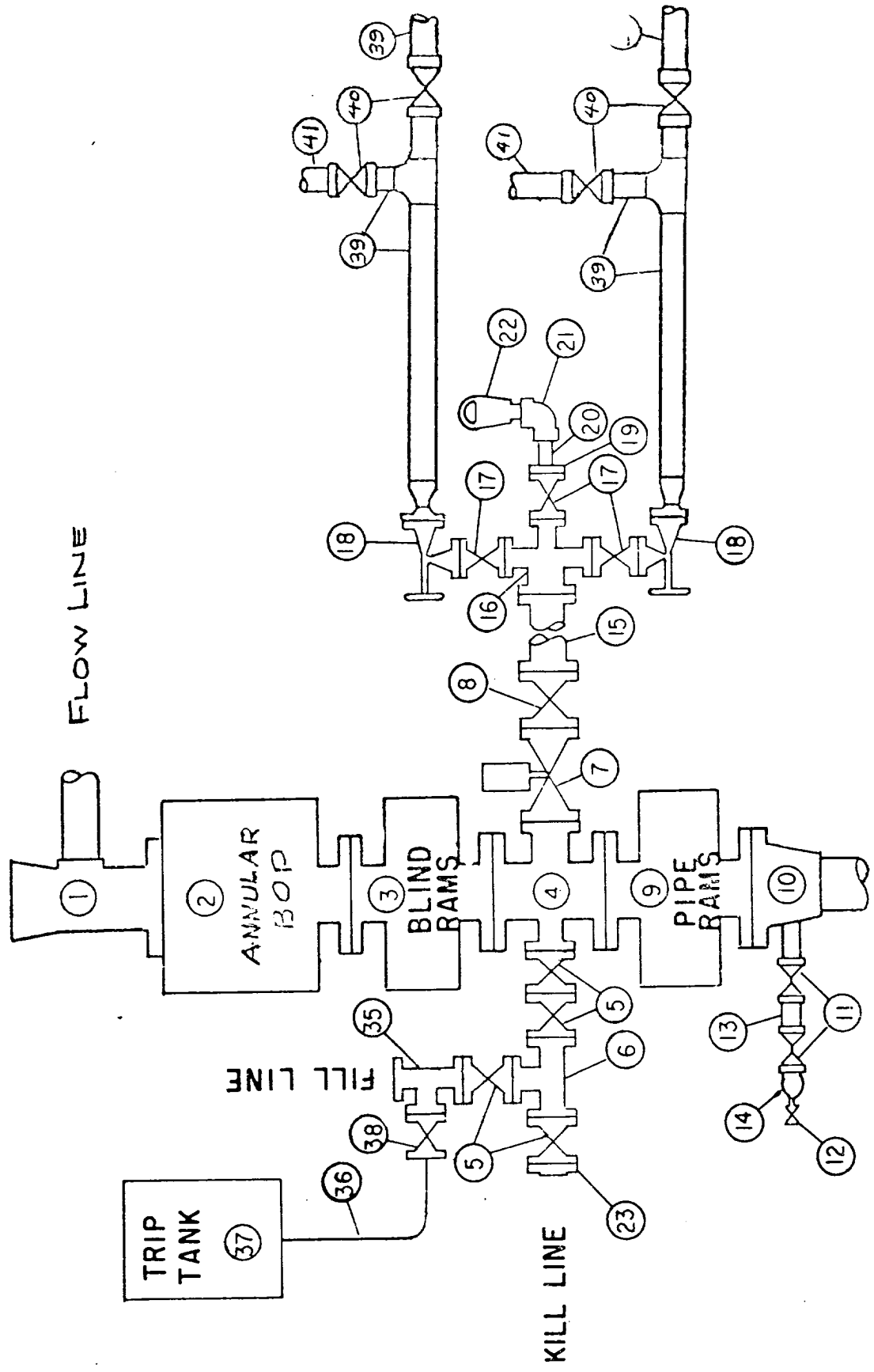
I hereby certify that the well location shown on this plat was plotted from field notes of actual surveys made by me or under my supervision, and that the same is true and correct to the best of my knowledge and belief.

Date Surveyed
5-16-78

Registered Professional Engineer
and/or Land Surveyor

Certificate No.
1382

MIDLAND DRILLING ORGANIZATION BLOWOUT PREVENTER SPECIFICATION TYPE II - C



BLOWOUT PREVENTER SPECIFICATION
EQUIPMENT DESCRIPTION

TYPE II-C

All equipment should be at least 2,000 psi WP or higher unless otherwise specified.

1. Bell nipple.
2. Hydril or Shaffer bag type preventer.
3. Ram type pressure operated blowout preventer with blind rams.
4. Flanged spool with one 4-inch and one 2-inch (minimum) outlet.
5. 2-inch (minimum) flanged plug or gate valve.
6. 2-inch by 2-inch by 2-inch (minimum) flanged tee.
7. 4-inch pressure operated gate valve.
8. 4-inch flanged gate or plug valve.
9. Ram type pressure operated blowout preventer with pipe rams.
10. Flanged type casing head with one side outlet (furnished by Exxon).
11. 2-inch threaded (or flanged) plug or gate valve (furnished by Exxon).
Flanged on 5000# WP, threaded on 3000# WP or less.
12. Needle valve (furnished by Exxon).
13. 2-inch nipple (furnished by Exxon).
14. Tapped bull plug (furnished by Exxon).
15. 4-inch flanged spacer spool.
16. 4-inch by 2-inch by 2-inch flanged cross.
17. 2-inch flanged plug or gate valve.
18. 2-inch flanged adjustable choke.
19. 2-inch threaded flange.
20. 2-inch XXH nipple.
21. 2-inch forged steel 90° Ell.
22. Cameron (or equal.) threaded pressure gage.
23. Threaded flange.
35. 2-inch flanged tee.
36. 3-inch (minimum) hose. (Furnished by Exxon).
37. Trip tank. (Furnished by Exxon).
38. 2-inch flanged plug or gate valve.
39. 2-1/2-inch pipe, 300' to pit, anchored.
40. 2-1/2-inch SE valve.
41. 2-1/2-inch line to steel pit or separator.

NOTES:

1. Items 3, 4 and 9 may be replaced with double ram type preventer with side outlets between the rams.
2. The two valves next to the stack on the fill and kill line to be closed unless drill string is being pulled.
3. Kill line is for emergency use only. This connection shall not be used for filling.
4. Replacement pipe rams and blind rams shall be on location at all times.
5. Only type U, LWS and QRC ram type preventers with secondary seals are acceptable for 5000 psi WP and higher BOP stacks.
6. Type E ram-type BOP's with factory modified side outlets may be used on 3000 psi or lower WP BOP stacks.