

NEW MEXICO OIL CONSERVATION COMMISSION
WELL LOCATION AND ACREAGE DEDICATION PLAT

Form C-102
Supersedes C-128
Effective 1-1-65

All distances must be from the outer boundaries of the Section.

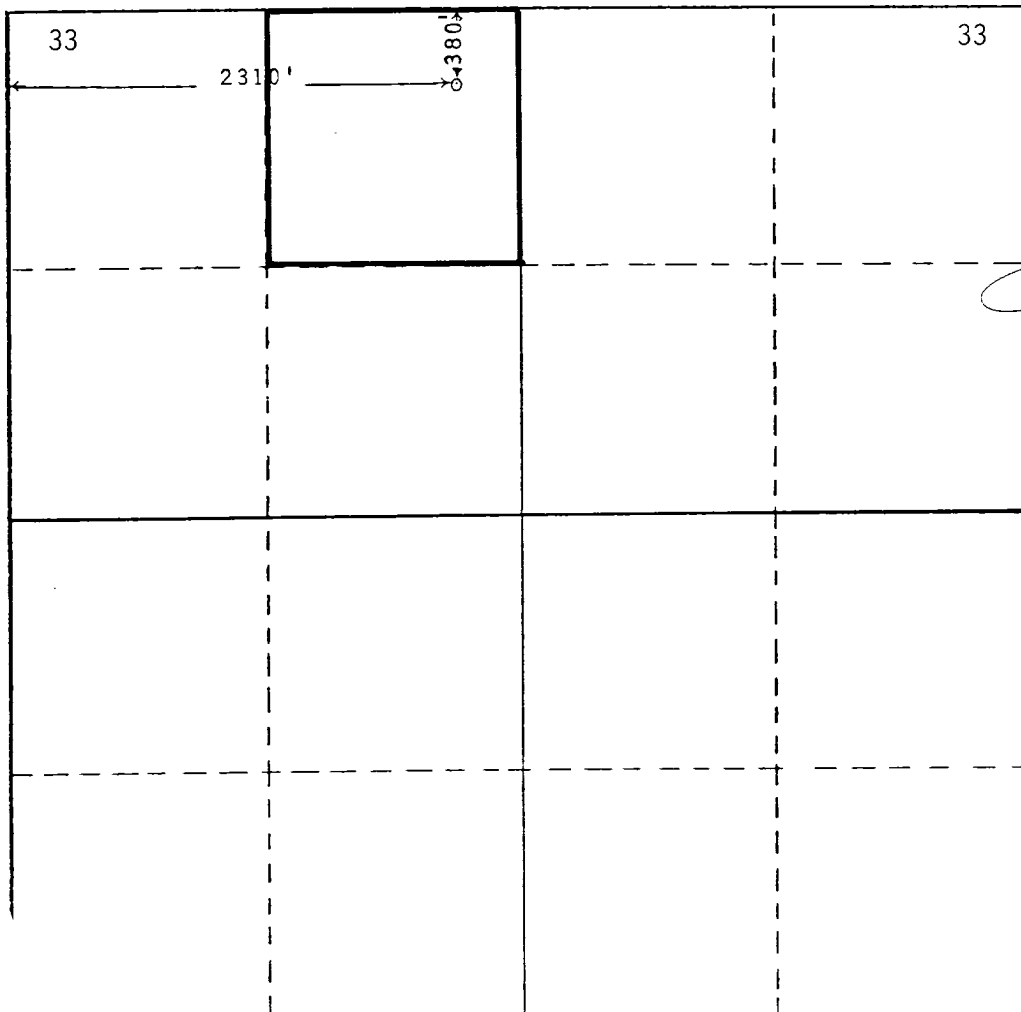
Operator GIFFORD, MITCHELL & WISENBAKER		Lease HORSE BACK		Well No. 4-Y
Unit Letter C	Section 33	Township 26 South	Range 36 East	County Lea
Actual Footage Location of Well: 380 feet from the north line and 2310 feet from the west line				
Ground Level Elev. 2898'	Producing Formation		Pool	Dedicated Acreage: Acres

1. Outline the acreage dedicated to the subject well by colored pencil or hachure marks on the plat below.
2. If more than one lease is dedicated to the well, outline each and identify the ownership thereof (both as to working interest and royalty).
3. If more than one lease of different ownership is dedicated to the well, have the interests of all owners been consolidated by communitization, unitization, force-pooling, etc?

☐ Yes ☐ No If answer is "yes," type of consolidation _____

If answer is "no," list the owners and tract descriptions which have actually been consolidated. (Use reverse side of this form if necessary.) _____

No allowable will be assigned to the well until all interests have been consolidated (by communitization, unitization, forced-pooling, or otherwise) or until a non-standard unit, eliminating such interests, has been approved by the Commission.



CERTIFICATION

I hereby certify that the information contained herein is true and complete to the best of my knowledge and belief.

Name
Gemma Lindberg
Position
Production Clerk
Company
Gifford, Mitchell & Wisenbaker
Date

I hereby certify that the well location shown on this plat was plotted from field notes of actual surveys made by me or under my supervision, and that the same is true and correct to the best of my knowledge and belief.

May 17, 1978

Date Surveyed
Gary N. Haner
Registered Professional Engineer
STATE OF NEW MEXICO
GARY N. HANER
No. 5657
REGISTERED PROFESSIONAL ENGINEER
Certificate No. 5657

THE CONSERVATION COMM.
HARRIS, N. M.

DEC 2 0 1978

RECEIVED