

UNITED STATES  
DEPARTMENT OF THE INTERIOR  
GEOLOGICAL SURVEY

## APPLICATION FOR PERMIT TO DRILL, DEEPEN, OR PLUG BACK

## 1a. TYPE OF WORK

DRILL ☐DEEPEN ☐PLUG BACK ☒

## b. TYPE OF WELL

OIL  
WELL ☒GAS  
WELL ☐

OTHER

SINGLE  
ZONE ☒MULTIPLE  
ZONE ☐

## 2. NAME OF OPERATOR

GULF OIL CORPORATION

## 3. ADDRESS OF OPERATOR

P.O. Box 670, Hobbs, NM 88240

## 4. LOCATION OF WELL (Report location clearly and in accordance with any State Requirements.)

At surface

1780' FSL &amp; 1880' FWL

At proposed prod. zone

same

## 14. DISTANCE IN MILES AND DIRECTION FROM NEAREST TOWN OR POST OFFICE\*

## 15. DISTANCE FROM PROPOSED\*

LOCATION TO NEAREST  
PROPERTY OR LEASE LINE, FT.  
(Also to nearest drlg. unit line, if any)

## 16. NO. OF ACRES IN LEASE

## 17. NO. OF ACRES ASSIGNED

TO THIS WELL

40

18. DISTANCE FROM PROPOSED LOCATION\*  
TO NEAREST WELL, DRILLING, COMPLETED,  
OR APPLIED FOR, ON THIS LEASE, FT.

## 19. PROPOSED DEPTH

7600'

## 20. ROTARY OR CABLE TOOLS

---

## 21. ELEVATIONS (Show whether DF, RT, GR, etc.)

3284' GL

## 22. APPROX. DATE WORK WILL START\*

## 23.

## PROPOSED CASING AND CEMENTING PROGRAM

SIZE OF HOLE	SIZE OF CASING	WEIGHT PER FOOT	SETTING DEPTH	QUANTITY OF CEMENT
12½"	8-5/8"	24#	1080'	500 sx Cl "C" - circ
7-7/8"	5½"	15.5# & 17#	7600'	1900 sx - circ (DV tool @ 2883')

Pull production equipment. Set cmt rtnr @ or near 6690'. Squeeze below rtnr w/100 sx Class "C" + 0.5% Halad-9. Reverse out excess cmt & test csg to 500 psi. Perf No. Teague Drinkard zone w/(2) ½" burrless, decentralized, 0-phase JHPF @ 6389-93'; 6420-24'; 6446-50'; 6491-95'; 6583-87' & 6621-25'. Straddle & acidize each set of Drinkard perfs with a total of 300 gal 15% NE, inhibited, iron-stabilized HCl per set. Swab & test.

IN ABOVE SPACE DESCRIBE PROPOSED PROGRAM: If proposal is to deepen or plug back, give data on present productive zone and proposed new productive zone. If proposal is to drill or deepen directionally, give pertinent data on subsurface locations and measured and true vertical depths. Give blowout preventer program, if any.

## 24.

SIGNED

*Gene Stone*

TITLE Area Engineer

DATE 7-24-79

(This space for Federal or State office use)

PERMIT NO. \_\_\_\_\_

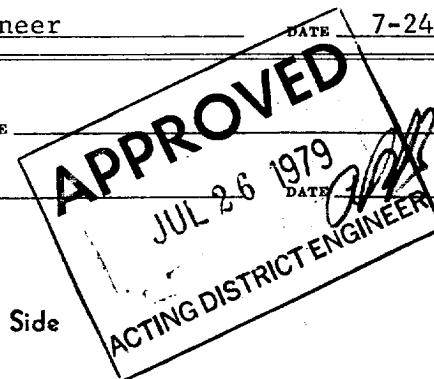
APPROVAL DATE \_\_\_\_\_

APPROVED BY \_\_\_\_\_

TITLE \_\_\_\_\_

CONDITIONS OF APPROVAL, IF ANY:

\*See Instructions On Reverse Side



NEW MEXICO OIL CONSERVATION COMMISSION  
WELL LOCATION AND ACREAGE DEDICATION PLAT

Form O-112  
Supersedes O-128  
Revised 1-1-65

All distances must be from the outer boundaries of the Section

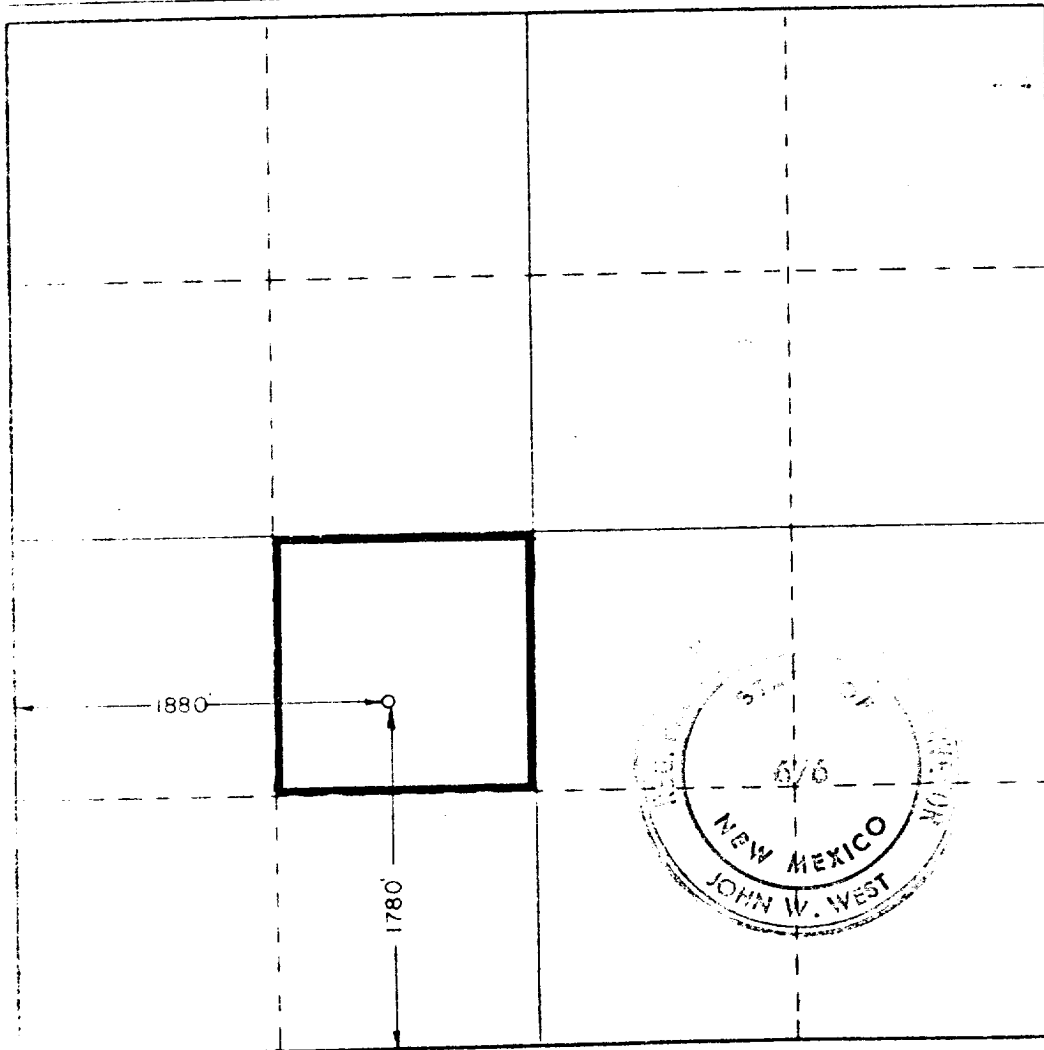
Gulf Oil Corp.			Lease C. E. La Munyon		Well No. 46
Section K	22	Township 23 South	Range 37 East	County Lea	
Location of Well: 1780 feet from the South line and 1880 feet from the West line					
Acres 3284.5	Producing Formation Drinkard		Pool <del>EMERSON</del> <del>LEBB-DRINKARD</del> No. <del>League Drinkard</del>	Dedicated Acreage: 40 Acres	

- Outline the acreage dedicated to the subject well by colored pencil or hatchure marks on the plat below.
- If more than one lease is dedicated to the well, outline each and identify the ownership thereof (both as to working interest and royalty).
- If more than one lease of different ownership is dedicated to the well, have the interests of all owners been consolidated by communitization, unitization, force-pooling, etc?

RECEIVED  
JUL 25 1979

U.S. GEOLOGICAL SURVEY  
HOBBS, NEW MEXICO

☐ Yes ☐ No If answer is "yes" type of consolidation \_\_\_\_\_  
If answer is "no" list the owners and tract descriptions which have actually been consolidated (by communitization, unitization, forced-pooling, or otherwise) or until a non-standard unit, eliminating such interests, has been approved by the Commission.  
No allowable will be assigned to the well until all interests have been consolidated (by communitization, unitization, forced-pooling, or otherwise) or until a non-standard unit, eliminating such interests, has been approved by the Commission.



CERTIFICATION

I hereby certify that the information contained herein is true and complete to the best of my knowledge and belief.

*Glyn Stone*  
Name

Glyn Stone

Position

Area Engineer

Company

Gulf Oil Corporation

Date

7-24-79

I hereby certify that the well location shown on this plat was plotted from field notes of actual surveys made by me or under my supervision, and that the same is true and correct to the best of my knowledge and belief.

Date Surveyed

Sept. 9, 1977

Registered Professional Engineer and Land Surveyor

*John W. West*  
Certificate No.

676

132 660 90 1320 1680 1980 2310 2640 2000 1800 1000 800