

NEW-MEXICO OIL CONSERVATION COMMISSION
WELL LOCATION AND ACREAGE DEDICATION PLAT

Form No. 1-65
 Effective 1-65

All distances must be from the outer boundaries of the Section

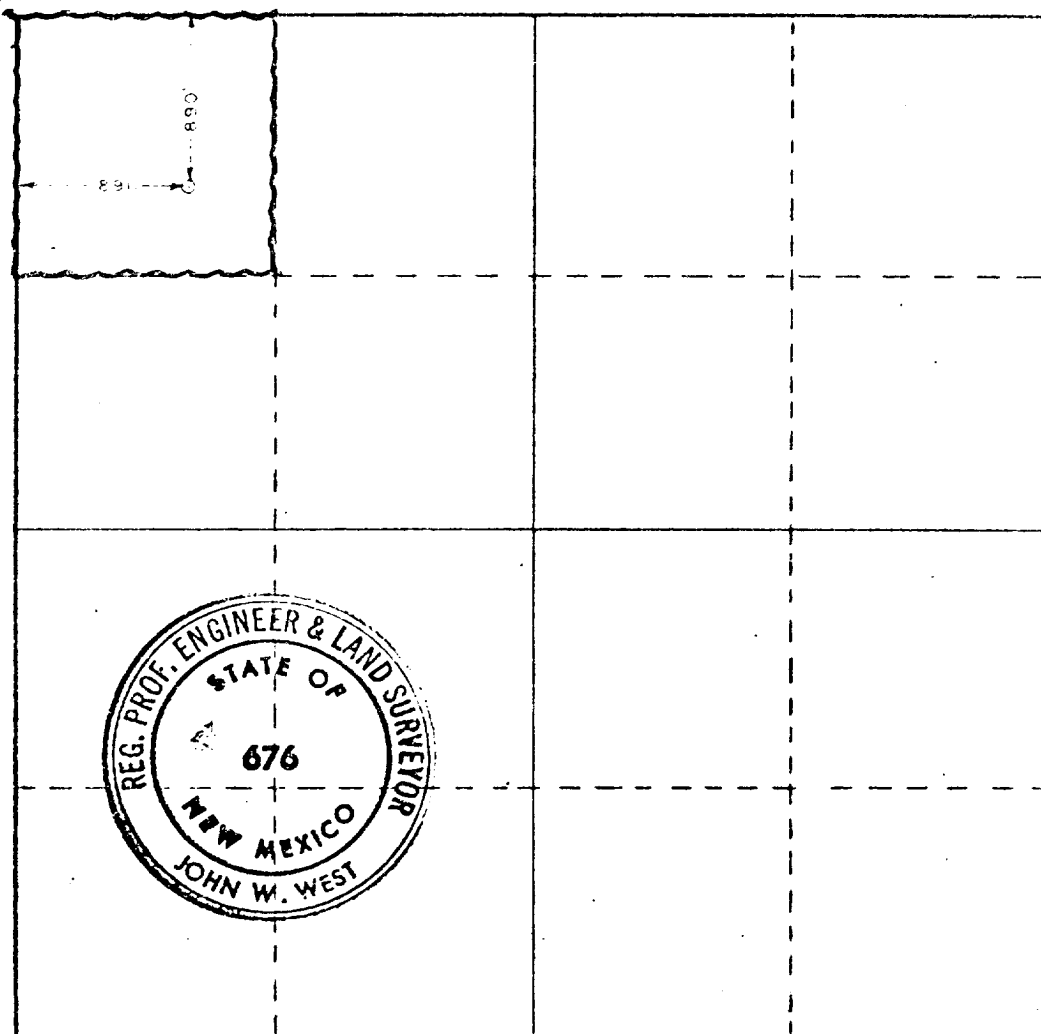
| | | | | | | | | |
|--|----------------------|--|--|----------------------|----------------------------|--------------------|------------------------------|--|
| Operator Amoco Production Co. | | | Lease Fornsworth "A" Federal | | | Acres 12 | | |
| Unit Letter D | Section 18 | Township 26 South | Range 37 East | County Leo | | | | |
| A well is located at the intersection of the 890 feet from the North line and 890 feet from the West line. | | | | | | | | |
| Ground Level Elev. 2957.0 | | Producing Formation YATES SEVEN RIVERS | | | Pool SCARBOROUGH | | Dedicated Acres 40 | |

1. Outline the acreage dedicated to the subject well by colored pencil or hatchure marks on the plat below.
2. If more than one lease is dedicated to the well, outline each and identify the ownership thereof (both as to working interest and royalty).
3. If more than one lease of different ownership is dedicated to the well, have the interests of all owners been consolidated by communitization, unitization, force-pooling, etc?

☐ Yes ☐ No If answer is "yes," type of consolidation _____

If answer is "no," list the owners and tract descriptions which have actually been consolidated. (Use reverse side of this form if necessary.) _____

No allowable will be assigned to the well until all interests have been consolidated (by communitization, unitization, forced-pooling, or otherwise) or until a non-standard unit, eliminating such interests, has been approved by the Commission.



CERTIFICATION

I hereby certify that the information contained herein is true and complete to the best of my knowledge and belief.

Name
Dennis Evans
 Position
Asst. Admin. Analyst
 Company
Amoco Prod. Co.
 Date
10-30-78

I hereby certify that the well location shown on this plat was plotted from field notes of actual surveys made by me or under my supervision, and that the same is true and correct to the best of my knowledge and belief.

Date Surveyed
October 20, 1978
 Registered Professional Engineer and/or Land Surveyor

 Certificate No. **John W. West 676**
Ronald J. Eldon 3239

0 330 660 990 1320 1650 1980 2310 2640 2970 3300 3630 3960 4290 4620 4950 5280 5610 5940 6270 6600