

UNITED STATES
DEPARTMENT OF THE INTERIOR
GEOLOGICAL SURVEY

APPLICATION FOR PERMIT TO DRILL, DEEPEN, OR PLUG BACK

1a. TYPE OF WORK

DRILL ☒DEEPEN ☐PLUG BACK ☐

b. TYPE OF WELL

OIL
WELL ☒GAS
WELL ☐

OTHER

SINGLE
ZONE ☐MULTIPLE
ZONE ☐

2. NAME OF OPERATOR

D A & S Oil Well Servicing, Incorporated

3. ADDRESS OF OPERATOR

P. O. Box 2545, Hobbs, N.M. 88240

4. LOCATION OF WELL (Report location clearly and in accordance with any State requirements.)*

At surface

660' FNL AND 1980' FEL of Section 10

At proposed prod. zone

14. DISTANCE IN MILES AND DIRECTION FROM NEAREST TOWN OR POST OFFICE*

Four (4) miles Southwest of Jal, N.M.

16. NO. OF ACRES IN LEASE

10. DISTANCE FROM PROPOSED*
LOCATION TO NEAREST
PROPERTY OR LEASE LINE, FT.
(Also to nearest drlg. unit line, if any)

480

18. DISTANCE FROM PROPOSED LOCATION*
TO NEAREST WELL, DRILLING, COMPLETED,
OR APPLIED FOR, ON THIS LEASE, FT.

3600'

17. NO. OF ACRES ASSIGNED
TO THIS WELL

40

20. ROTARY OR CABLE TOOLS

Rotary

21. ELEVATIONS (Show whether DF, RT, GR, etc.)

22. APPROX. DATE WORK WILL START*

1-25-79

23.

PROPOSED CASING AND CEMENTING PROGRAM

SIZE OF HOLE	SIZE OF CASING	WEIGHT PER FOOT	SETTING DEPTH	QUANTITY OF CEMENT
12 1/4	8-5/8	24	1400	750 sx. circulate
7 7/8	5 1/2	14	3600	850 sx. circulate

See Attachment for blowout preventer, mud program
and complete details of operations.

RECEIVED

JAN 19 1979

U. S. GEOLOGICAL SURVEY
HOBBS, NEW MEXICO

IN ABOVE SPACE DESCRIBE PROPOSED PROGRAM: If proposal is to deepen or plug back, give data on present productive zone and proposed new productive zone. If proposal is to drill or deepen directionally, give pertinent data on subsurface locations and measured and true vertical depths. Give blowout preventer program, if any.

24.

SIGNED Paul Bliss TITLE Vice-PresidentDATE 1-17-79

(This space for Federal or State office use)

PERMIT NO. _____

APPROVAL DATE _____

APPROVED BY _____

TITLE _____

DATE _____

CONDITIONS OF APPROVAL, IF ANY:

APPROVED
AS AMENDED
JAN 24 1979
ACTING DISTRICT ENGINEER

*See Instructions On Reverse Side

Instructions

General: This form is designed for submitting proposals to perform certain well operations, as indicated, on all types of lands and leases for appropriate action by either a Federal or a State agency, or both, pursuant to applicable Federal and/or State laws and regulations. Any necessary special instructions concerning the use of this form and the number of copies to be submitted, particularly with regard to local, area, or regional procedures and practices, either are shown below or will be issued by, or may be obtained from, the local Federal and/or State office.

Item 1: If the proposal is to redrill to the same reservoir at a different subsurface location or to a new reservoir, use this form with appropriate notations. Consult applicable State or Federal regulations concerning subsequent work proposals or reports on the well.

Item 4: If there are no applicable State requirements, locations on Federal or Indian land should be described in accordance with Federal requirements. Consult local State or Federal office for specific instructions.

Item 14: Needed only when location of well cannot readily be found by road from the land or lease description. A plat, or plats, separate or on this reverse side, showing the roads to, and the surveyed location of, the well, and any other required information, should be furnished when required by Federal or State agency offices.

Items 15 and 18: If well is to be, or has been directionally drilled, give distances for subsurface location of hole in any present or objective production zone.

Item 22: Consult applicable Federal or State regulations, or appropriate officials, concerning approval of the proposal before operations are started.

ATTACHMENT FORM 9-331-C

D A & S Oil Well Servicing, Incorporated

Federal "B" No. 1

Location: 660' FNL & 1980' FEL Section 10, T26S, R36E, Lea
County, New Mexico, Federal Lease NM 14502

1. Surface Formation: Quaternary Alluvium

2. Estimated tops of geologic markers: Base Salt 2800
Tansill 3150

3. Estimated depth of mineral-bearing formations:

Fresh Water - 80 to 200
Tansill 3150 oil and gas

4. Casing Program

Hole Size	Size of Casing	Weight Per ft.	Cond	Grade	Depth	Sacks Cement	Est Top Cement
12 1/4	8 5/8	24#	New	K-55	1400	750	Circ.
7 7/8	5 1/2	14#	New	K-55	3600	850	Circ.

5. Blowout Preventer: Shaffer Series 900 Double Hydraulic
with Payne Closing Unit. See Exhibit E.

6. Mud Program: 0-1400' native spud mud, 34 viscosity, weight
8.9#; 1400-2800 brine water; 2800-3600 salt
base mud viscosity 35-38, weight 10.1#, water
loss 20, 2% oil.

7. Auxiliary Equipment: Kelly valve, safety sub with full opening valve,
drill pipe float valve.

8. Logging and Testing: No drillstem tests or coring anticipated.
Log to consist of Gamma Ray-Neutron.

9. Anticipated pressure and potential hazards: The D A & S Federal "A"
No. 1 in Section 9, indicates that the maximum
pressure will be less than 1000# and that hydrogen
sulfide will not be encountered.

10. Starting date and duration: Starting date will be before January 30, 1979
and as determined by date of approval and avail-
ability of Capitan Drilling Co. Rig No. 20.
Operations are expected to be complete in 14 days.

RECEIVED

JAN 0 1979

OIL CONSERVATION COMM.
FEDS. B. B.

NEW MEXICO OIL CONSERVATION COMMISSION
WELL LOCATION AND ACREAGE DEDICATION FORM

Form C-102
Supersedes C-128
Effective 1-1-65

All distances must be from the outer boundaries of the Section

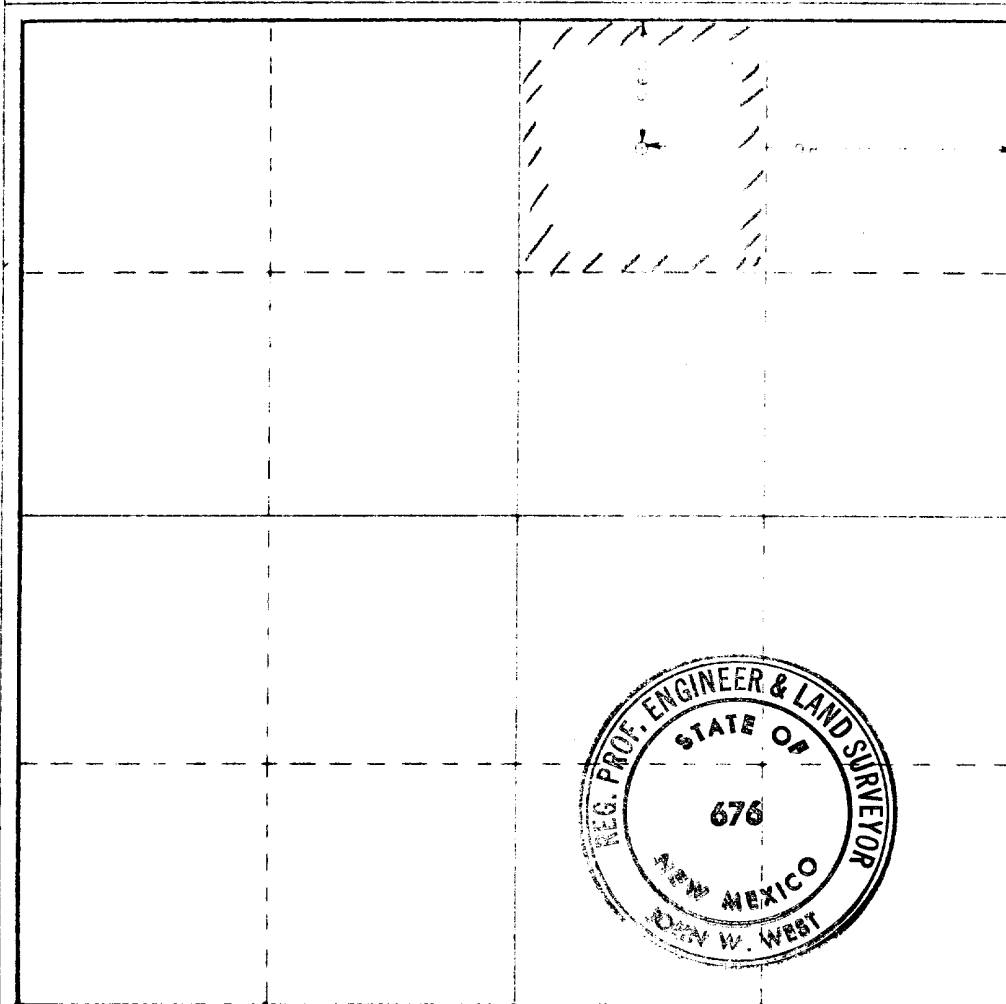
Operator D. A. & S. Oil Well Service, Inc.		Lease Federal "B"		Well No. 1
Tract Number B	Section 10	Range 26 South	Meridian 36 East	County Lea
Approximate Location of Well: 660 feet from the North line and 1980 feet from the East line				
Surface Elevation 2962.0	Producing Formation TAPSIN YATES	Designation UNDESIGNATED		Dedicated Acreage 40 Acres

1. Outline the acreage dedicated to the subject well by colored pencil or hatchure marks on the plat below.
2. If more than one lease is dedicated to the well, outline each and identify the ownership thereof (both as to working interest and royalty).
3. If more than one lease of different ownership is dedicated to the well, have the interests of all owners been consolidated by communitization, unitization, force-pooling, etc.?

☐ Yes ☐ No If answer is "yes," type of consolidation _____

If answer is "no," list the owners and tract descriptions which have actually been consolidated. (Use reverse side of this form if necessary.) _____

No allowable will be assigned to the well until all interests have been consolidated (by communitization, unitization, forced-pooling, or otherwise) or until a non-standard unit, eliminating such interests, has been approved by the Commission.



CERTIFICATION

I hereby certify that the information contained herein is true and complete to the best of my knowledge and belief.

Paul Bliss
Vice-President

DA&S Oil Well Serv, Inc.

1-19-79

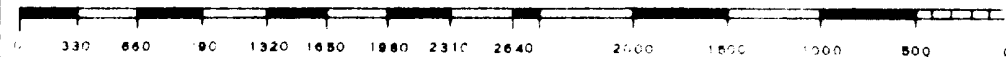
I hereby certify that the well location shown on this plat was plotted from field notes of actual surveys made by me or under my supervision and that the same is true and correct to the best of my knowledge and belief.

January 15, 1979

Registered Professional Engineer and Land Surveyor

John W. West
Certificate No. **John W. West** **676**

Ronald J. Eidson **3239**



RECEIVED

JAN 30 1979

OIL CONSERVATION COMM.
ECON. M. M.

MUTI-POINT SURFACE USE AND OPERATIONS PLAN

D A & S Oil Well Servicing, Incorporated

Federal "B" No. 1

Federal Lease NM 14502 660' FNL & 1980' FEL of Section 10, T26S, R36E, Lea
County, New Mexico

1. Existing Roads:

Exhibit "A" is a portion of a topographic map showing the existing lease roads that will be utilized and their junction with a county road 4.4 miles southwest of Jal, New Mexico.

2. Planned Access Road:

Length and Width: The existing road will be rebuilt to 12 feet wide and 460 feet long. As shown on Exhibit "B" the proposed road will tie into the unimproved existing road that crosses Section No. 10.

Surfacing Material: Six inches of caliche, watered, compacted and graded.

Maximum Grade: One percent.

Turnouts: None required.

Drainage Design: None required.

Culverts: None required

Cuts and Fills: None required.

Gates and Cattleguards: None required.

3. Location of Existing Wells:

Exhibit "C" is a portion of a Lea County ownership map showing all existing wells within a radius of 3 miles.

4. Location of Existing and/or Proposed Facilities:

Exhibit "B" shows the location of the proposed well, pipelines and roads in Section 10. In the event commercial production is found the tank battery or producing equipment will be located on the drilling pad.

5. Location and Type of Water Supply:

All water required for drilling and road construction will be hauled from the McCasland-Sims water station in Eunice, New Mexico.

6. Source of Construction Materials:

Caliche for roads and location pad will be obtained from an existing pit located in Southeast portion of Section 9, T26S, R36E, on Federal Land.

7. Methods of Handling Waste Disposal:

Drill cuttings will be disposed of in the drilling pits.

Drilling fluids will be allowed to evaporate in the drilling pits until pits are dry.

Water produced during test will be disposed of in the drilling pits. Oil produced during test will be stored in test tanks until transferred to tank battery for sale.

Current laws and regulations pertaining to the disposal of human waste will be complied with.

Trash, waste paper, garbage and junk will be buried in a separate trash pit and covered with a minimum of 24 inches of dirt. All waste material will be contained to prevent scattering by the wind. Location of trash pit is shown on Exhibit "D".

All trash and debris will be buried or removed from the wellsite within 30 days after finishing drilling and/or completion operations.

8. Ancillary Facilities: None required

9. Wellsite Layout:

Exhibit "D" shows the relative location and dimensions of the well pad, mud pits, reserve pit and location of major rig components.

The well site will require minor levelling of blow sand. No cuts and fills will be necessary.

The reserve pit will be plastic lined.

10. Plans for Restoration of the Surface:

After completion of drilling and/or completion operations, all equipment and other material not needed for operations will be removed. Pits will be filled and location cleaned of all trash and junk to leave wellsite in an aesthetically pleasing condition as possible.

Any unguarded pits containing fluids will be fenced until they are filled.

Settlement for damages has been made with the surface owner. A statement of the surface owner is attached hereto.

11. Other Information:

Topography: Land surface is rolling sand dunes.

Soil: Soil consists of 10 to 15 feet of sand on a caliche base.

Flora and Fauna: Vegetative cover is sparse and consists of mesquite, shin oak and native grass. Wildlife consists of coyotes, rabbits, rodents, reptiles, dove, quail and crows.

Ponds and Streams: None in the area.

Residences and Other Structures: The Anthony Ranch is located about one (1) mile Southwest of location. Exhibit "B" shows the pipe lines, ranch location and existing roads in Section 10.

Archeological, Historical and Cultural Sites: None observed in the area.

Land Use: Grazing and hunting in season.

Surface Ownership: Frank Anthony, Monahans, Texas.

12. Operator's Representatives:

The field representatives responsible for assuring compliance with the approved surface use and operations plan are as follows:

Paul Bliss
P. O. Box 2545
Hobbs, New Mexico 88240
(505) 392-6591


Dallas McCasland
P. O. Box 206
Eunice, New Mexico 88231
(505) 394-2581

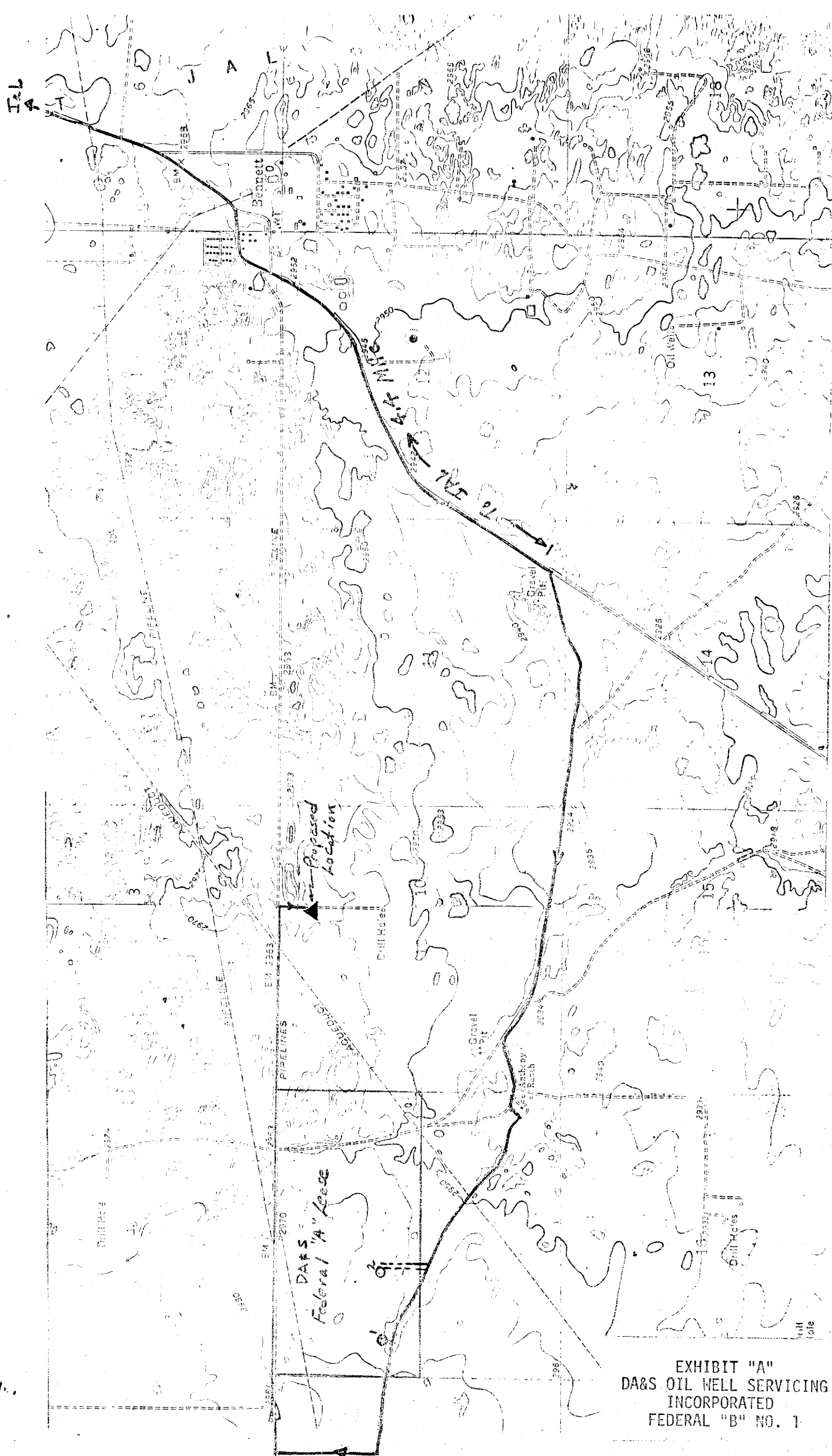
13. Certification:

I hereby certify that I, or persons under my direct supervision, have inspected the proposed drillsite and access route; that I am familiar with the conditions which presently exist; that the statements made in this plan are, to the best of my knowledge true and correct; and the work associated with the operation proposed herein will be performed by myself and my contractors and sub-contractors in conformity with this plan and the terms and conditions under which it is approved.

D A & S Oil Well Servicing, Incorporated

January 18, 1979


Paul Bliss
Vice-President





Reconnaissance
Excavation
Analysis
Explanation
Curation

NMAS New Mexico Archaeological Services, Inc.

P. O. Box 1341

Carlsbad, New Mexico 88220

(505) 887-7646

16 January 1979

Mr. Paul Bliss
D.A.&S. Oil Well Service, Inc.
P.O. Box 2545
Hobbs, NM 88240

Dear Mr. Bliss:

Enclosed please find NMAS' archaeological clearance report for D.A.&S. Oil Well Service's proposed Federal "E" Well No. 1 and its associated access road. No archaeological sites were recorded; however, the reconnoitered areas do host isolated manifestations. Cultural resources of this type represent en passant activities and lack sufficient concentration and diversity of remains to warrant site designation. NMAS is thus suggesting clearance for your location and access road.

If you have any questions, please call my office. Thank you for asking NMAS to do this reconnaissance.

Yours sincerely,

J. J. Loring Haskell
Principal Investigator

Enclosure

cc: Ms. Ann Ramare, BLM, Roswell
Mr. Jim Simms, USGS, Hobbs
Mr. Thomas W. Merlan, ARPO, Santa Fe

es

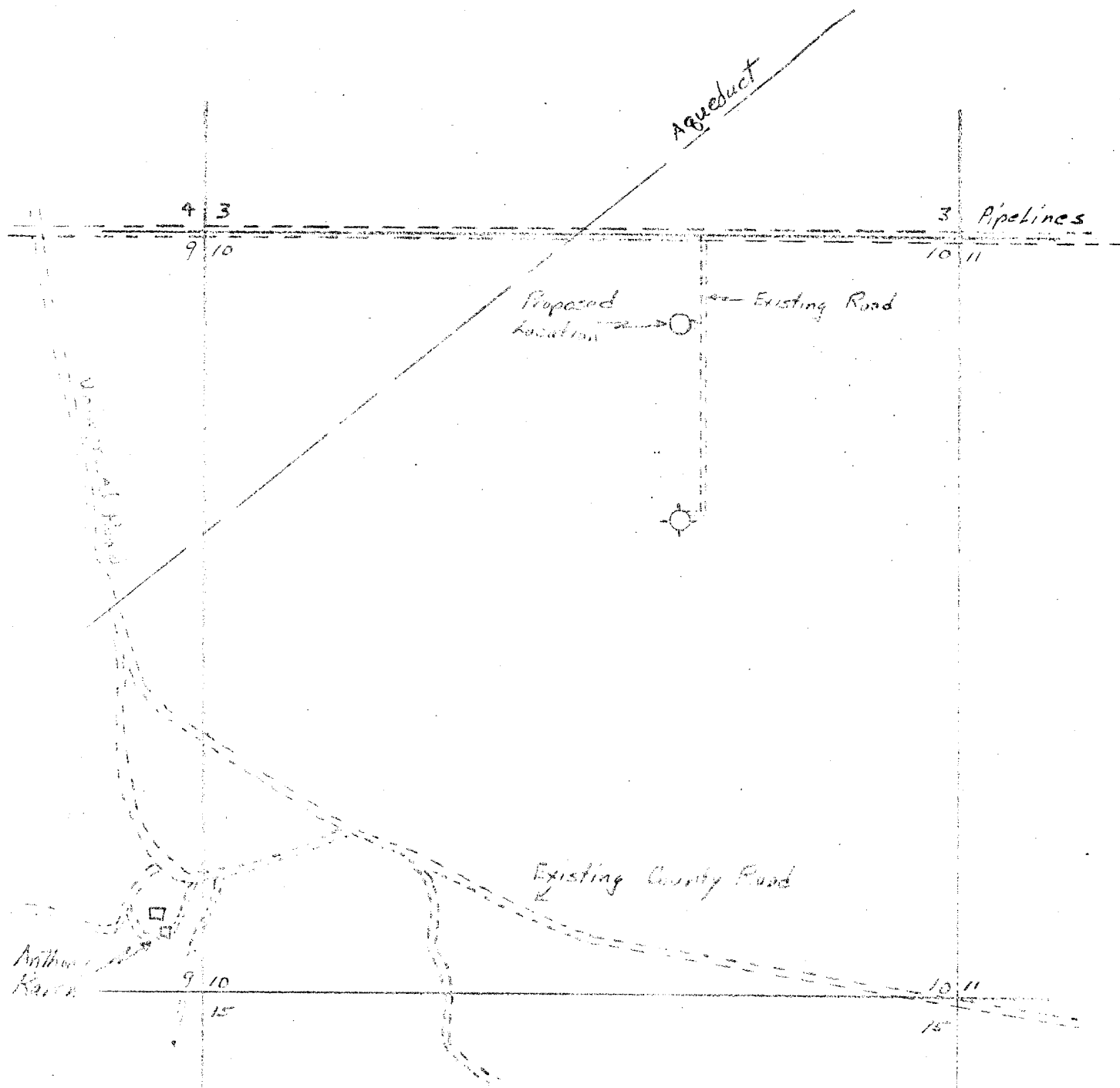


EXHIBIT "B"

DA&S OIL WELL SERVICING, INCORPORATED

CAPITAN DRILLING Co.

RIG No. 20

LOCATION

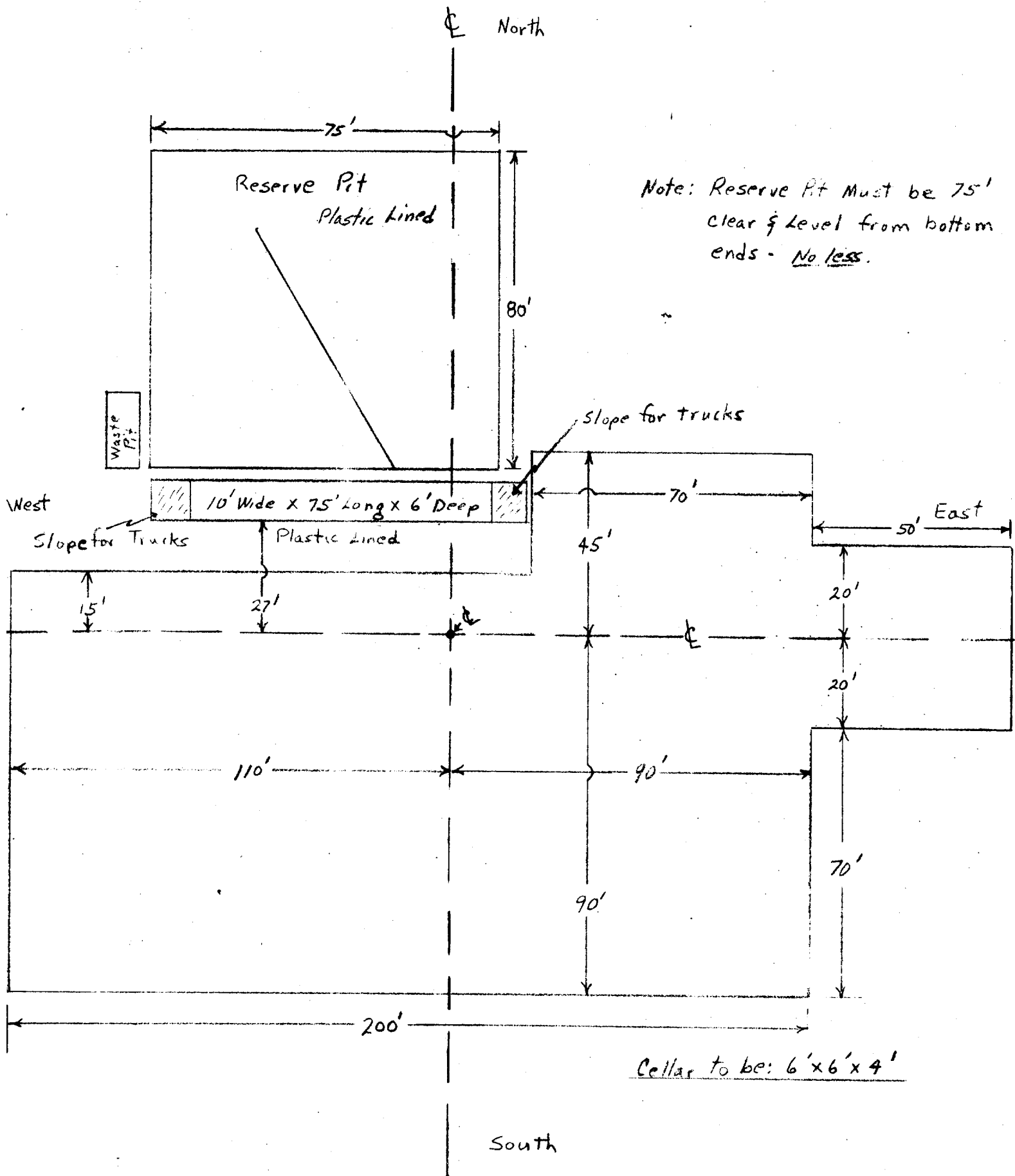
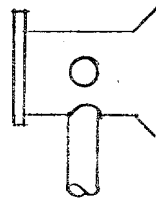


Exhibit D

Celanese Drilling Company
Rig 20

Base Rotary Table



Flow line will have to be
made to fit under
Rotary

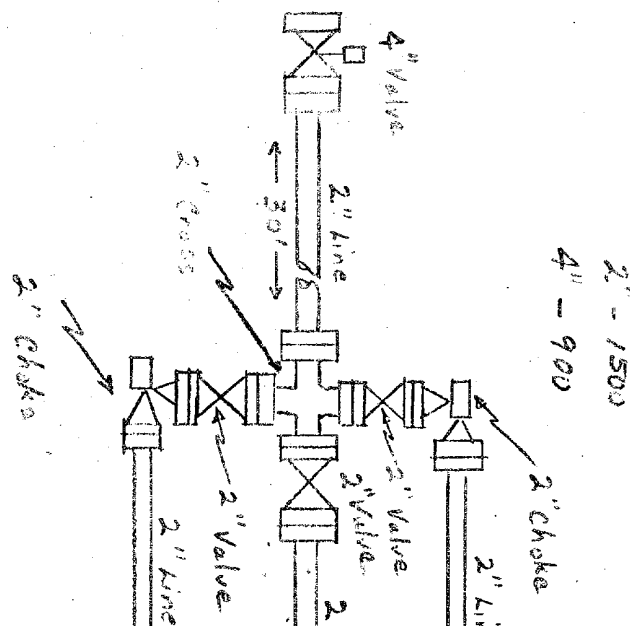
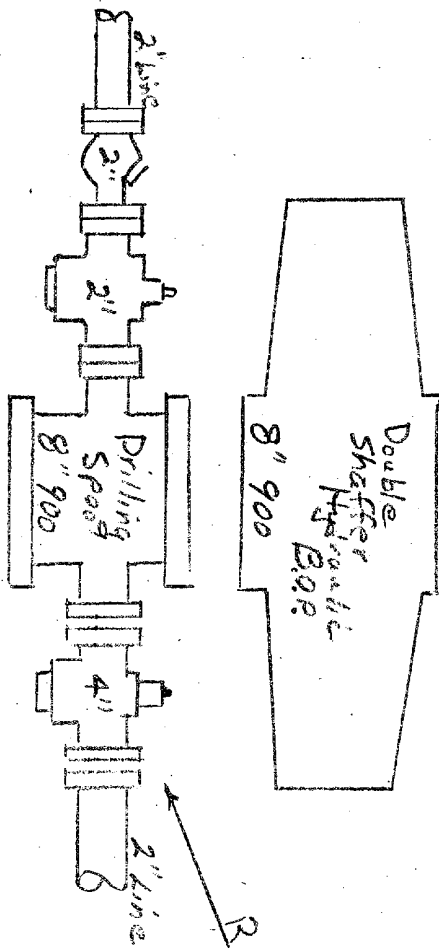


Exhibit 6

LOCATIONS

HOBBS, NEW MEXICO
LOVINGTON HIGHWAY
EUNICE, NEW MEXICO
MAIN AND AVE. O
ANDREWS, TEXAS
EUNICE HIGHWAY
MIDLAND, TEXAS

DA&S OIL WELL SERVICING

INCORPORATED

P. O. BOX 2545
HOBBS, NEW MEXICO 88240

TELEPHONES

HOBBS, 392-6591
EUNICE, 394-3021
ANDREWS, 523-4420
MIDLAND, 685-8555

January 19, 1979

United States
Department of The Interior
Geological Survey
414 W. Taylor
Hobbs, N.M. 88240

Gentlemen:

Reference is made to our Application For Permit to Drill: Federal "B" No. 1 located 660' FNL & 1980' FEL of Section 10, T26S, R36E, Lea County, New Mexico.

D A & S Oil Well Servicing, Incorporated has an agreement with Mr. Frank Anthony owner of the surface that:

1. The location will be cleaned up after drilling and the pits filled.
2. The caliche pad and road will be left in place in the event of abandonment.
3. Every effort will be made to keep surface damage to a minimum.

Sincerely,


Paul Bliss
Vice-President

PB:pj

Archaeological Clearance Report

for

D.A.&S. Oil Well Service, Inc.

Federal "B" Well No.1

Prepared

By

Dr. J. Loring Haskell

Submitted

By

Dr. J. Loring Haskell
Principal Investigator
New Mexico Archaeological Services, Inc.
Carlsbad, New Mexico

16 January 1979

Permit No. 78-NM-120

Introduction

On 16 January 1979, New Mexico Archaeological Services, Inc., (NMAS), Carlsbad, undertook for D.A.&S. Oil Well Service, Inc., Hobbs, an archaeological reconnaissance of lands administered by the Bureau of Land Management in Lea County, New Mexico. Reconnoitered areas will be impacted by the construction of a drill location and access road. This project was expedited by Mr. Paul Bliss, D.A.&S. Oil Well Service, Inc., and Dr. J. Loring Haskell, Principal Investigator, NMAS. Dr. Haskell conducted the reconnaissance under excellent field conditions.

Survey Technique

Methodologically, D.A.&S. Oil Well Service's proposed location was reconnoitered by walking it in a series of 20 ft wide, close interval (15° or less), east-west, zigzag transects. In addition, a zone embracing an added 20 ft, or more, on each side of the location was investigated as well in order to ensure the continued integrity of cultural resources there should they be encountered. As for access road, it was examined by the utilization of a similar means. This procedure served to maximize the visual examination of areas to be impacted by construction-related activities.

Federal "B" Well No.1

Location

As proposed, Federal "B" Well No.1 will be situated 600 ft from the north line and 1980 ft from the east line of:

Section 10, T26S, R36E, NMPM, Lea County, NM (BLM)

Thus it will be situated in the:

NW1/4, Section 10, T26S, R36E, NMPM, Lea County, NM (BLM)

The proposed access road will measure 12 X 3960 ft on federal lands and will pass through the:

SW1/4, Section 10, T26S, R36E, NMPM, Lea County, NM
 NW1/4, Section 10, T26S, R36E, NMPM, Lea County, NM
 SW1/4, Section 10, T26S, R36E, NMPM, Lea County, NM
 NW1/4, Section 10, T26S, R36E, NMPM, Lea County, NM

Map Reference:

USGS Javelina Basin, 7.5 Minute Series, 1973.

USGS Jal, 7.5 Minute Series, 1969.

Terrain

As a whole, investigated areas lie within the bounds of Javelina Basin which in its broader context represents the southwestward extension of South Plain. Javelina Basin, a large collapse structure, is distinguished by extensive areas of semi-stable to stabilized dunes and associated deflation basins. On the east, it is bordered by lacustrine, and often highly fossiliferous, deposits of Pleistocene age. Soil individuals belong to the Haplargid-Torrinsarment association with Typic Torrinsarments predominating in most instances.

Floristics

Local soils support a floral assemblage largely dominated by Prosopis juliflora and Yucca glauca. Prosopis is locally unique owing to the fact that it often achieves arborescent proportions. The highly areaceous soils on the north host Quercus havardii as well as the aforementioned. Frequently observed forbs, albeit browned owing to the season, include Trigonum annuum, Euphorbia missurica, Euphorbia sp., Lactis

sp., Chamaesaracha sp., Senecio smartoides, and Proboscidea sp. Grasses are well represented and include Munroa squarrosa, Galeria cucullata, Aristida sp., Sporobolus flexuosus, Sporobolus cryptandrus, and Setaria macrostachya.

Cultural Resources

No archaeological sites were recorded during this reconnaissance; however, NMAS did observe numerous isolated manifestations. On the location, isolated manifestations include several fragments of ground stone and a very light scatter of secondary decortication flakes in the southeastern quadrant, several secondary decortication flakes in the southwestern portion, and an occasional flake elsewhere. At a point 75 ft west of the central portion of the location several fragments of a metate were noted in association with debitage. North of the location, and within a dune field, a light scatter of secondary decortication flakes, several burned caliche cobbles, and some ground stone was noted. As for the proposed access road, a light scatter of secondary decortication flakes and several fragments of ground stone were noted in a deflation basin. Occasional waste flakes occurred elsewhere on the proposed access road. Remains of this type are typical of Javelina Basin and its immediate environs and represent the peregrinations of occasional social units engaged in hunting pursuits with a secondary emphasis on collecting activities.

Recommendations

NMNS recommends clearance for D.A.M.S. Oil Well Service's proposed Federal "B" Well No. 1 and its associated access road and suggests that work-related activities proceed according to existing plans.