

NEW MEXICO OIL CONSERVATION COMMISSION  
WELL LOCATION AND ACREAGE DEDICATION FORM

Form C-102  
Supersedes C-128  
Effective 1-1-65

All distances must be from the outer boundaries of the Section.

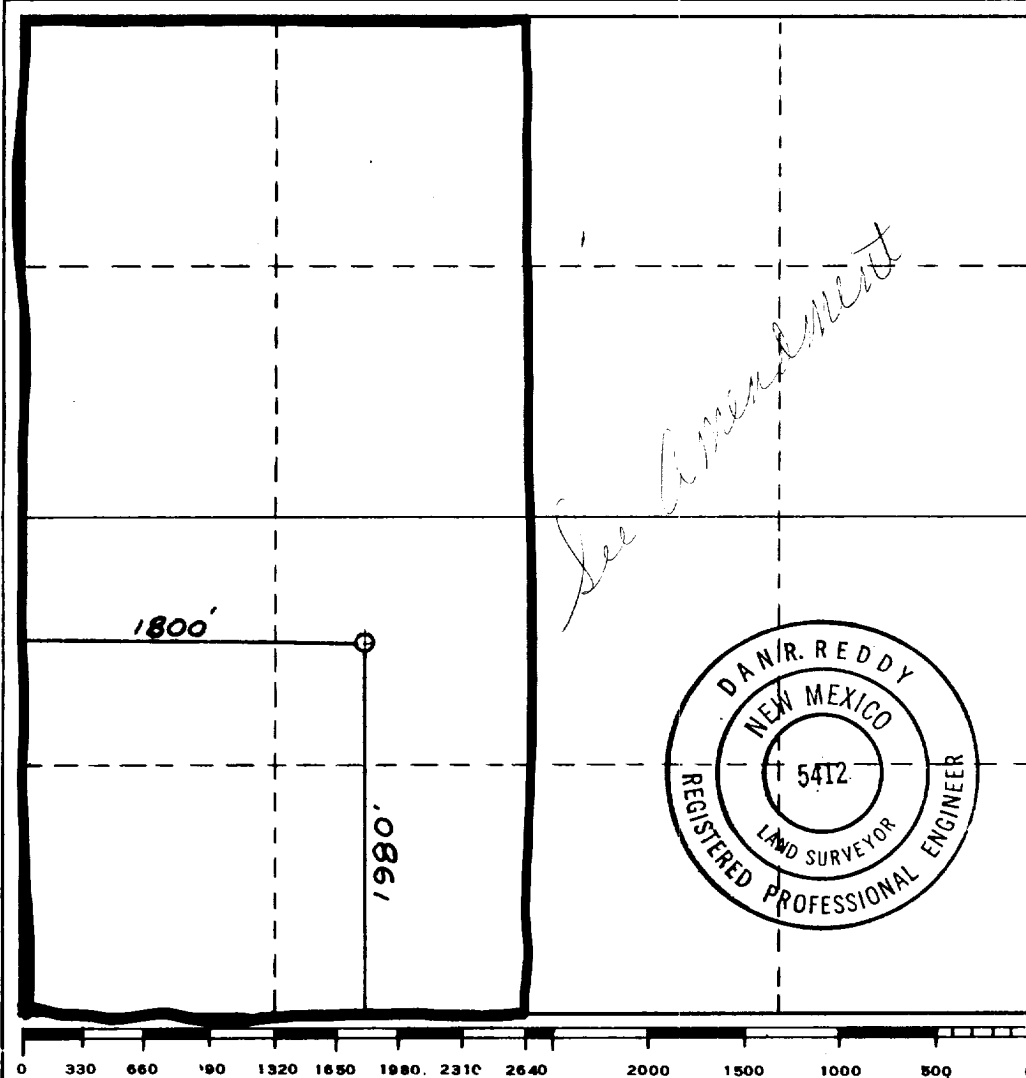
Operator <b>SUPERIOR OIL COMPANY</b>			Lease <b>Government L</b>		Well No. <b>2</b>
Unit Letter <b>K</b>	Section <b>18</b>	Township <b>24 South</b>	Range <b>34 East</b>	County <b>Lea</b>	
Actual Footage Location of Well: <b>1980'</b> feet from the <b>South</b> line and <b>1800'</b> feet from the <b>West</b> line					
Ground Level Elev. <b>3573.1</b>	Producing Formation <b>Morrow</b>		Pool <b>South Bell Lake</b>	Dedicated Acreage: <b>320</b> Acres	

1. Outline the acreage dedicated to the subject well by colored pencil or hachure marks on the plat below.
2. If more than one lease is dedicated to the well, outline each and identify the ownership thereof (both as to working interest and royalty).
3. If more than one lease of different ownership is dedicated to the well, have the interests of all owners been consolidated by communitization, unitization, force-pooling, etc?

☐ Yes ☐ No If answer is "yes," type of consolidation \_\_\_\_\_

If answer is "no," list the owners and tract descriptions which have actually been consolidated. (Use reverse side of this form if necessary.) \_\_\_\_\_

No allowable will be assigned to the well until all interests have been consolidated (by communitization, unitization, forced-pooling, or otherwise) or until a non-standard unit, eliminating such interests, has been approved by the Commission.



CERTIFICATION

I hereby certify that the information contained herein is true and complete to the best of my knowledge and belief.

*Leo J. Lory*  
Name  
Engineer Assistant

Position  
The Superior Oil Company

Company  
6-30-79

Date

I hereby certify that the well location shown on this plat was plotted from field notes of actual surveys made by me or under my supervision, and that the same is true and correct to the best of my knowledge and belief.

Date Surveyed

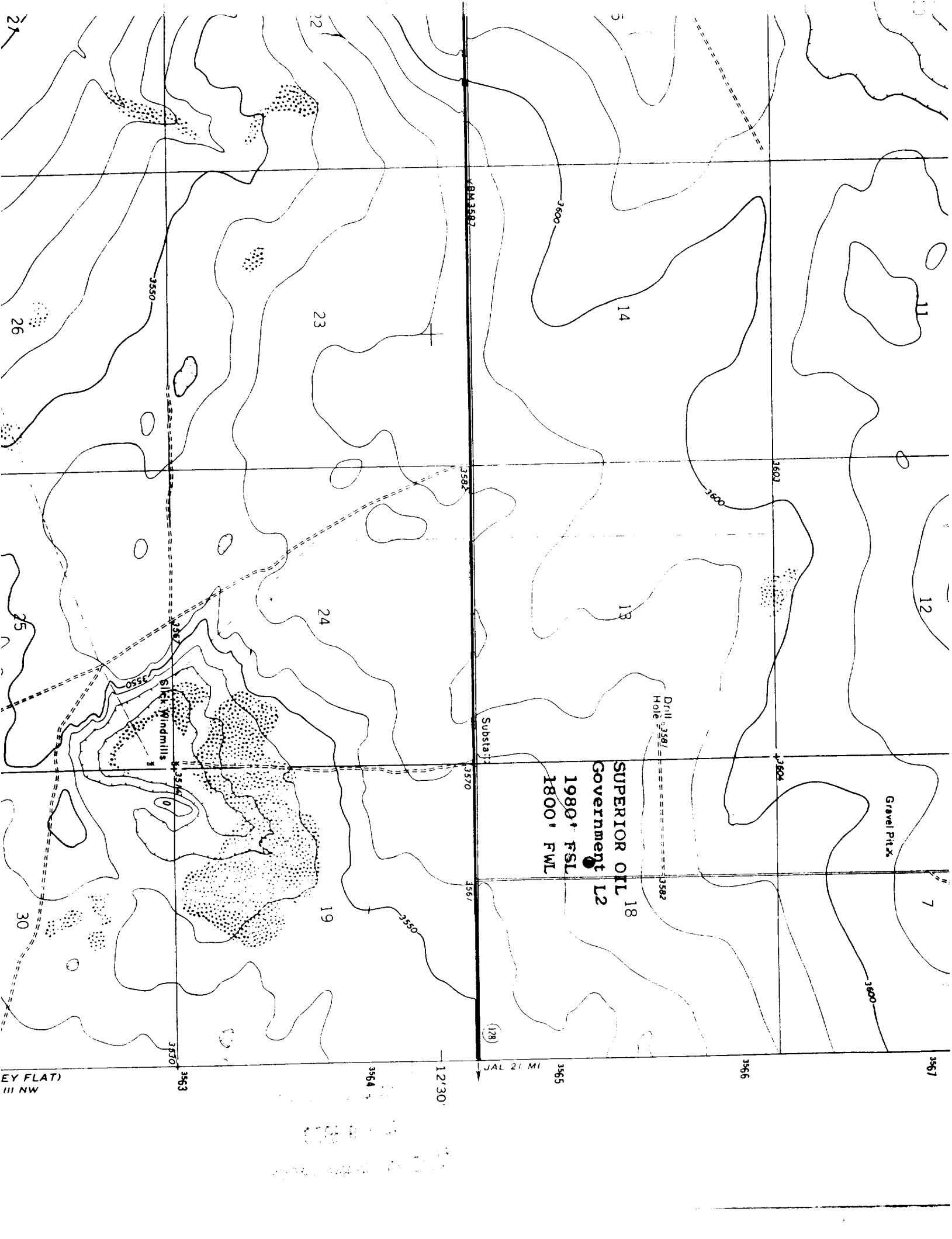
**June 15, 1979**

Registered Professional Engineer and/or Land Surveyor

*Dan R. Reddy*  
Certificate No.

**NMPE&LS #5412**

RECEIVED  
JUL - 9 1979  
O.C.D. HOBBS, OFFICE



SUPERIOR OIL 18  
Government L2  
1980' FSL  
1800' FWL

Slick Windmills

EY FLAT)  
III NW

(128)

JAL 21 MI

12'30"

3564

3565

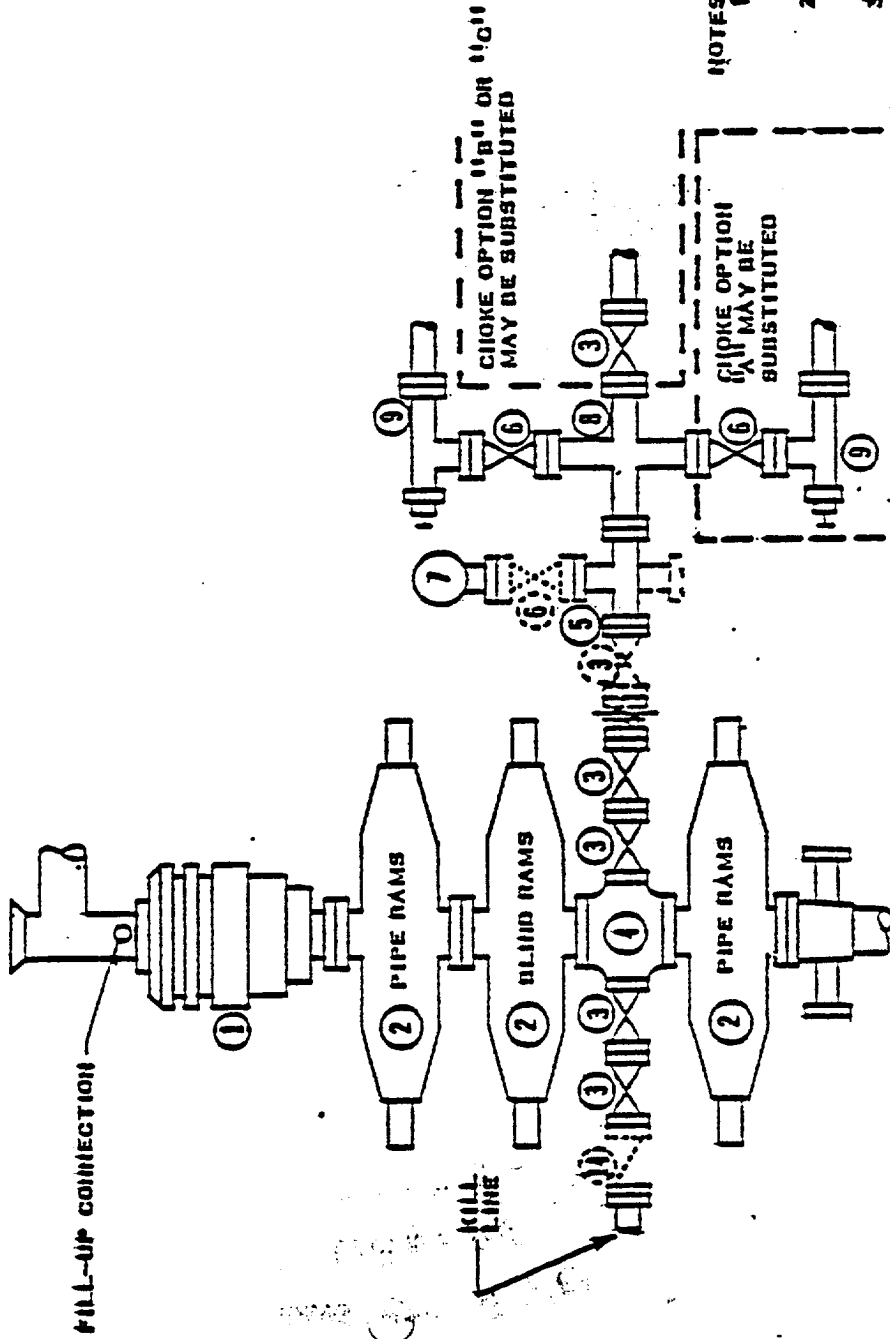
3566

3567

3563

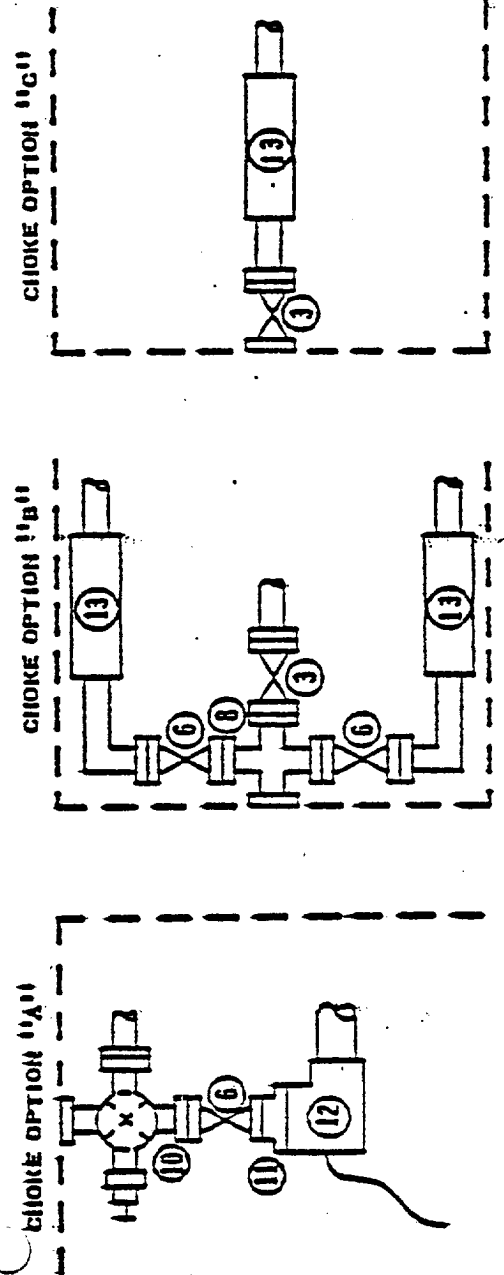
RECEIVED  
JUL - 9 1979  
O.C.D. HOBBS, OFFICE

----- OPTIONAL EQUIPMENT



NOTES

1. 5000 PSI WP OR BETTER CLAMP NUTS MAY BE SUBSTITUTED FOR FLANGES
2. ONE ADJUSTABLE CHOKER MAY BE REPLACED WITH A POSITIVE CHOKER
3. VALVES MAY BE EITHER HAND OR POWER OPERATED BUT, IF POWER OPERATED, THE VALVES FLANGED TO THE BOP MUST BE CAPABLE OF BEING OPENED AND CLOSED MANUALLY OR CLOSE ON POWER FAILURE AND BE CAPABLE OF BEING OPENED MANUALLY



- 1 SER. 1500 HYDRIL GK
- 2 SER. 1500 RAM-TYPE BOP (8)
- 3 3" SER. 1500 VALVE
- 4 SER. 1500 DRILLING SPOOL
- 5 3" SER. 1500 X 2" SER. 1500 STEEL TEE
- 6 2" SER. 1500 VALVE
- 7 2" MUD PRESSURE GAUGE
- 8 3" SER. 1500 X 2" SER. 1500 STEEL CROSS
- 9 2" SER. 1500 ADJ. CHOKER
- 10 2" SER. 1500 ADJ. CHOKER ON 2" SER. 1500 RISER VALVE ON SIDE OUTLET OF 2" SER. 1500 STEEL TEE
- 11 ADAPTER, 2" SER. 1500 X 10,000 LB FLANGE MATING (3) INLET
- 12 10,000 LB WP REMOTE CHOKER
- 13 HYDRAULIC CHOKER, 2500 LB WP OR BETTER
- 14 3" SER. 1500 CHECK VALVE

5000 PSI WORKING PRESSURE  
BLOWOUT PREVENTER HOOK-UP  
(SERIES 1500 FLANGES OR BETTER)