

COUNTY LEA FIELD Jalmat STATE NM
 OPR HARTMAN, DOYLE API 30-025-26500
 NO 1 LEASE Maralo State MAP
Sec 36, T23S, R36E COORD
330' FSL, 2310' FWL of Sec
9 mi N/Jal SPD 10-16-79 CMP 12-2-11 NM
11-1-79

8 5/8" at 462' w/300 sx
 5 1/2" at 3360' w/500 sx

WELL CLASS	INTE D	FIN	DG	FEET	FEET
FORMATION	DATUM	FORMATION	DATUM		
ID	3360' (SVRV)	PBD	3356'		

TP (Yates-Seven Rivers) Perfs 2895-3330' F 124 MCFGPD. Pot
 based on 24 hr test thru 12/64" chk. GOR (NR); gty (NR); CP
 169#; TP 140#

CONTR Kenai OPRSELEV 3325' GL PD 3360' RT

F.R. 10-15-79

(Yates-Seven Rivers)

12-8-79

AMEND ZONE: Formerly reported as Seven Rivers

12-3-79

TD 3360'; PBD 3356'; Complete

Perf (Yates-Seven Rivers) 2895-3330' (overall)

Acid (2895-3330') 4500 gals (15%)

Frac (2895-3330') 70,000 gals + 110,000# sd

LOG TOPS: Rustler Anhydrite 1170', Salt

1310', Base Salt 2725', Yates 2890', Seven

Rivers 3105'

12-8-79

COMPLETION ISSUED

12-2-11 NM

TC 30-025-70389-79

NEW MEXICO OIL CONSERVATION COMMISSION
WELL LOCATION AND ACREAGE DEDICATION FORM

Form O-102
Supersedes O-128
Effective 1-1-75

All distances must be from the outer boundaries of the Section

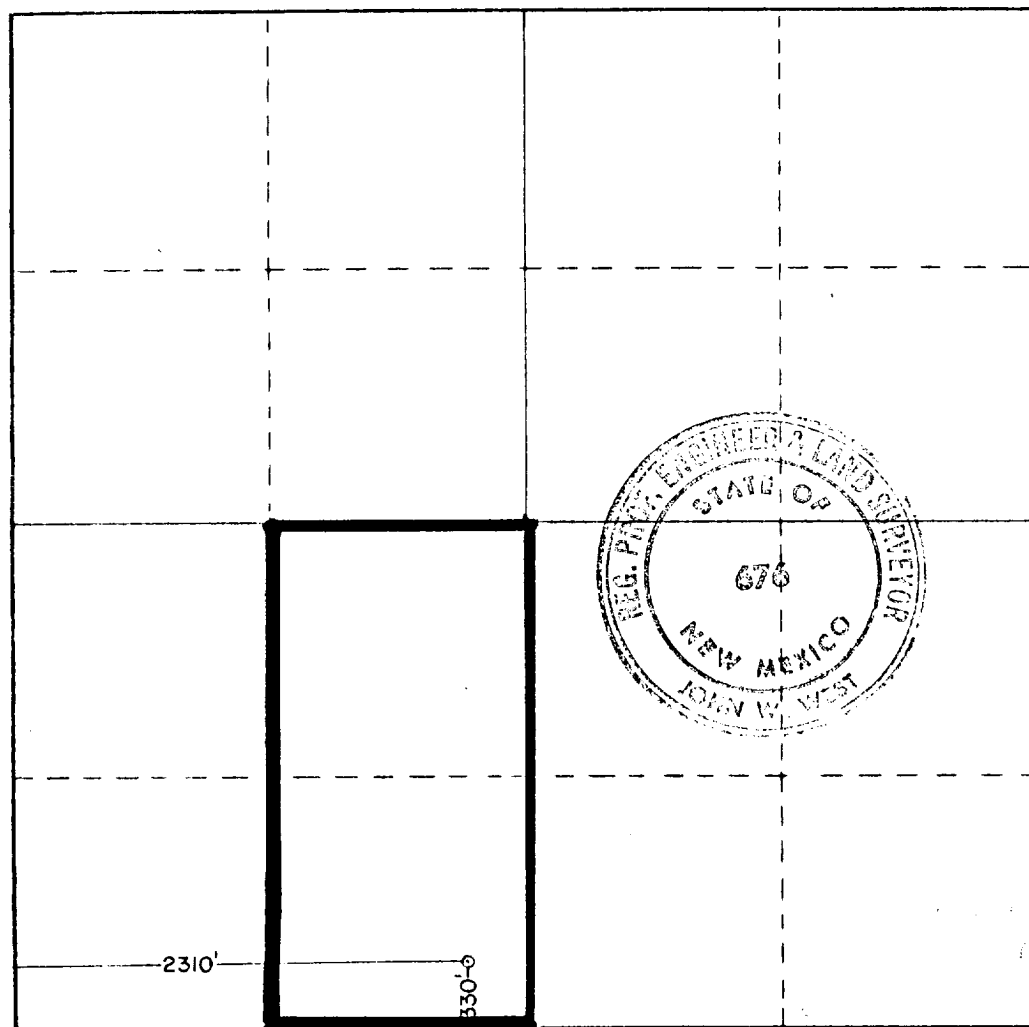
Lessee DOYLE HARTMAN			Lease Maralo		STATE LEA	Well No. 1
Section N	Section 36	Township 23 SOUTH	Range 36 EAST	County LEA		
Well Location Location of Well: 330 feet from the SOUTH line and 2310 feet from the WEST line						
Ground Level Elev. 3325.3	Producing Formation Yates-Seven Rivers	Pool Jalmit (Gas) Pool			Dedicated Acreage: * 80 Acres	

1. Outline the acreage dedicated to the subject well by colored pencil or hachure marks on the plat below.
2. If more than one lease is dedicated to the well, outline each and identify the ownership thereof (both as to working interest and royalty).
3. If more than one lease of different ownership is dedicated to the well, have the interests of all owners been consolidated by communitization, unitization, force-pooling, etc?

☐ Yes ☐ No If answer is "yes," type of consolidation _____

If answer is "no," list the owners and tract descriptions which have actually been consolidated (Use reverse side of this form if necessary.) _____

No allowable will be assigned to the well until all interests have been consolidated (by communitization, unitization, forced-pooling, or otherwise) or until a non-standard unit, eliminating such interests, has been approved by the Commission. *See note on reverse side



CERTIFICATION

I hereby certify that the information contained herein is true and complete to the best of my knowledge and belief.

Doyle Hartman
Name

Doyle Hartman
Position

Operator-Part Owner

Capacity
Individual

Date
10-08-79

I hereby certify that the well location shown on this plat was plotted from field notes of actual surveys made by me or under my supervision, and that the same is true and correct to the best of my knowledge and belief.

Date Surveyed

SEPTEMBER 22ND, 1979

Registered Professional Engineer and/or Land Surveyor

John W. West
Certificate No.

John W. West 676
Ronald J. Eidson 3239

NOTE: The E/2 SW/4 Section 36, T-23-S, R-36-E is presently dedicated to to the Maralo Shell "C" State No. 2 which is a highly marginal well in the Jalmat gas pool. On September 19, 1979, a hearing was held before the NMOCD (Case 6663) to obtain approval for infill drilling, non-standard Jalmat proration unit, and non-standard location for my proposed Maralo State No. 1 well. The Maralo State No. 1 will be spudded as a Jalmat (Gas) test as soon as possible after the necessary order from the NMOCD is rendered.

RECEIVED

OCT 10 1951

O.C.D. HOBBS, OFFICE

NEW MEXICO OIL CONSERVATION COMMISSION
WELL LOCATION AND ACREAGE DEDICATION PLAT

Form O-102
Supersedes O-128
Effective 1-1-65

REVISED

All distances must be from the outer boundaries of the Section

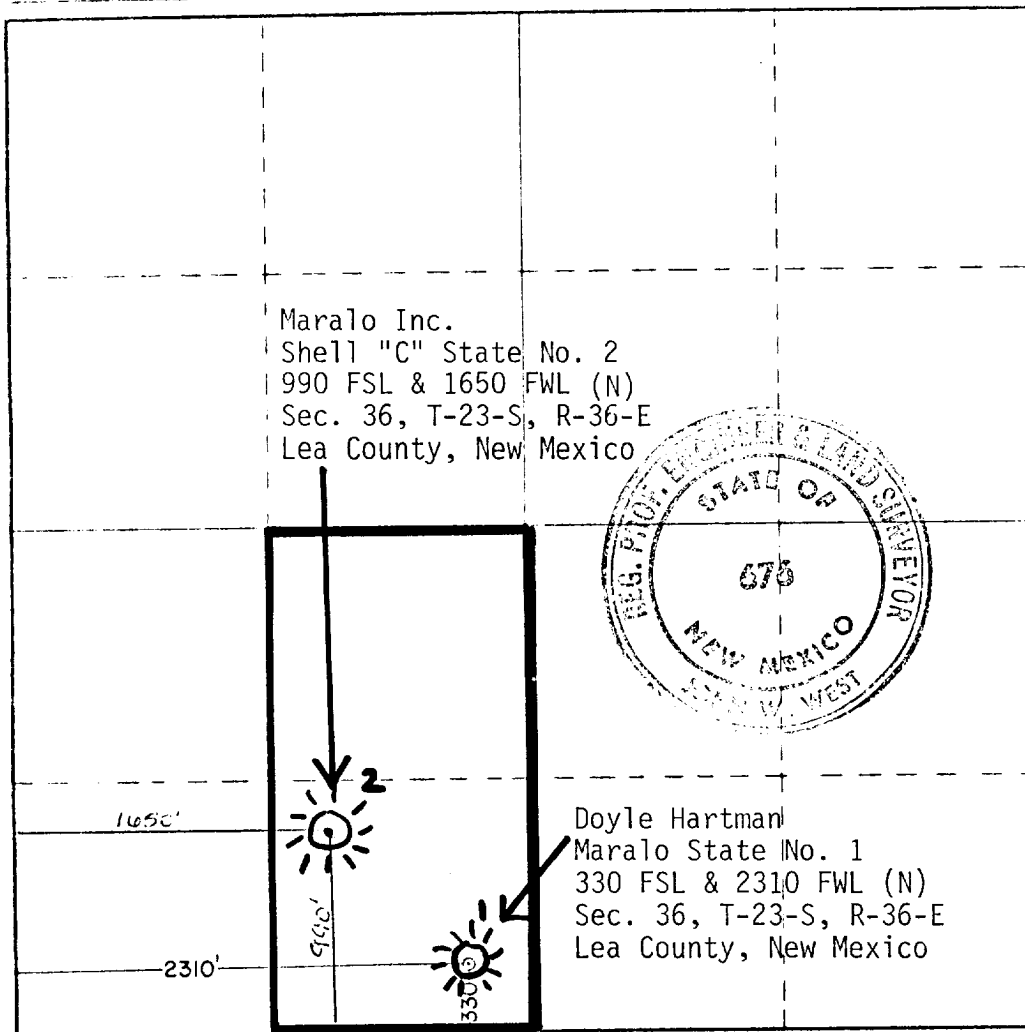
Owner DOYLE HARTMAN			Lease Maralo STATE			Well No. 1		
Section N	Section 36	Township 23 SOUTH	Range 36 EAST	County LEA				
Well Location of Well:								
330 feet from the SOUTH line and		2310 feet from the WEST line						
Ground Elev. 3325.3		Producing Formation Yates-Seven Rivers		Pool Jalpat (Gas) Pool			Dedicated Acreage 80 Acres	

- Outline the acreage dedicated to the subject well by colored pencil or hatchure marks on the plat below.
- If more than one lease is dedicated to the well, outline each and identify the ownership thereof (both as to working interest and royalty).
- If more than one lease of different ownership is dedicated to the well, have the interests of all owners been consolidated by communitization, unitization, force-pooling, etc?

☐ Yes ☐ No If answer is "yes," type of consolidation _____

If answer is "no," list the owners and tract descriptions which have actually been consolidated (Use reverse side of this form if necessary.) _____

No allowable will be assigned to the well until all interests have been consolidated (by communitization, unitization, forced-pooling, or otherwise) or until a non-standard unit, eliminating such interests, has been approved by the Commission.



CERTIFICATION

I hereby certify that the information contained herein is true and complete to the best of my knowledge and belief.

Michelle Hernandez

Assistant Office Manager

Doyle Hartman

Company

Date
11-12-79

I hereby certify that the well location shown on this plat was plotted from field notes of actual surveys made by me or under my supervision, and that the same is true and correct to the best of my knowledge and belief.

Date approved

SEPTEMBER 22ND, 1979

Registered Professional Engineer and Land Surveyor

John W. West

Certificate No. John W. West 676
Ronald J. Edson 3230