

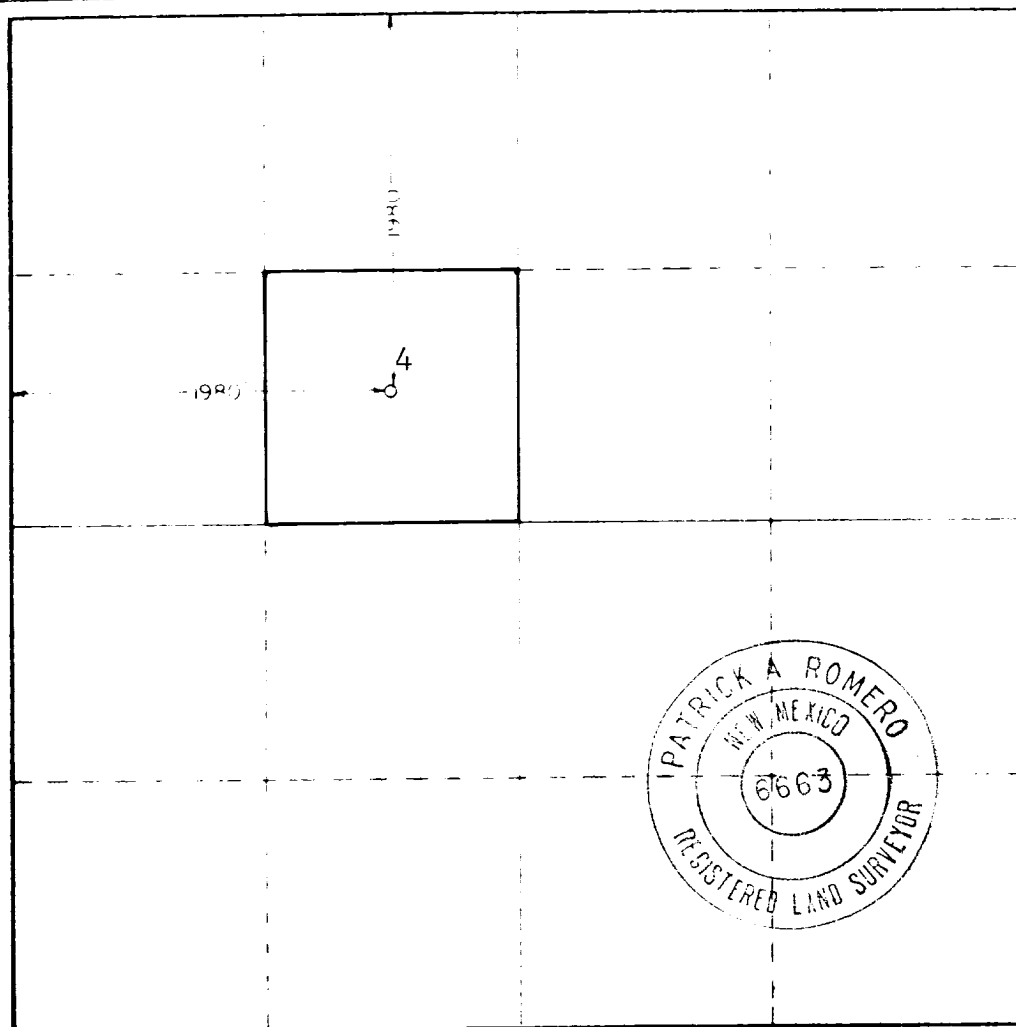
Form C-102  
Supersedes C-128  
Effective 1-1-65

Operator		Lease		Well No.	
Marolo Inc.		Marolo 10 State		4	
County		TOWNSHIP		RANGE	
10		26 South		36 East	
Section		Line and		Line	
198		10		West	
Tansill Yates 7 Rivers		Sioux Yates Pool		Estimated Acreage:	
201				40 Acres	

- Yes ☐ No ☐ If answer is "yes," type of consolidation \_\_\_\_\_

If answer is "no" list the owners and tract descriptions which have actually been consolidated. (Use reverse side of this form if necessary.) \_\_\_\_\_

No allowable will be assigned to the word until all interests have been consolidated (by communitization, unitization, forced-pooling, or otherwise) or until a non-standard unit, eliminating such interests, has been approved by the Commission.



I hereby certify that the information contained herein is true and complete to the best of my knowledge and belief.

Jan Davis

Jan Davis

Production Clerk

MARALO, INC.

January 21, 1980

I hereby certify that the well location shown on this plat was plotted from field notes of actual surveys made by me or under my supervision, and that the same is true and correct to the best of my knowledge and belief.

One Surveyed:

January 15, 1980

Registered Professional Engineer  
and/or Land Surveyor

and or Land Surveyor

*Patrick J. Boncio*

Certificate No	JOHN W. WEST	070
	PATRICK A. ROMERO	0003
	Ronald J. Eidson	3239

RECEIVED

JAN 22 1980

OIL CONSERVATION DIV

