

NEW MEXICO OIL CONSERVATION COMMISSION
 WELL LOCATION AND ACREAGE DEDICATION PLAT

Form C-102
 Supersedes C-128
 Effective 1-1-65

All distances must be from the outer boundaries of the Section.

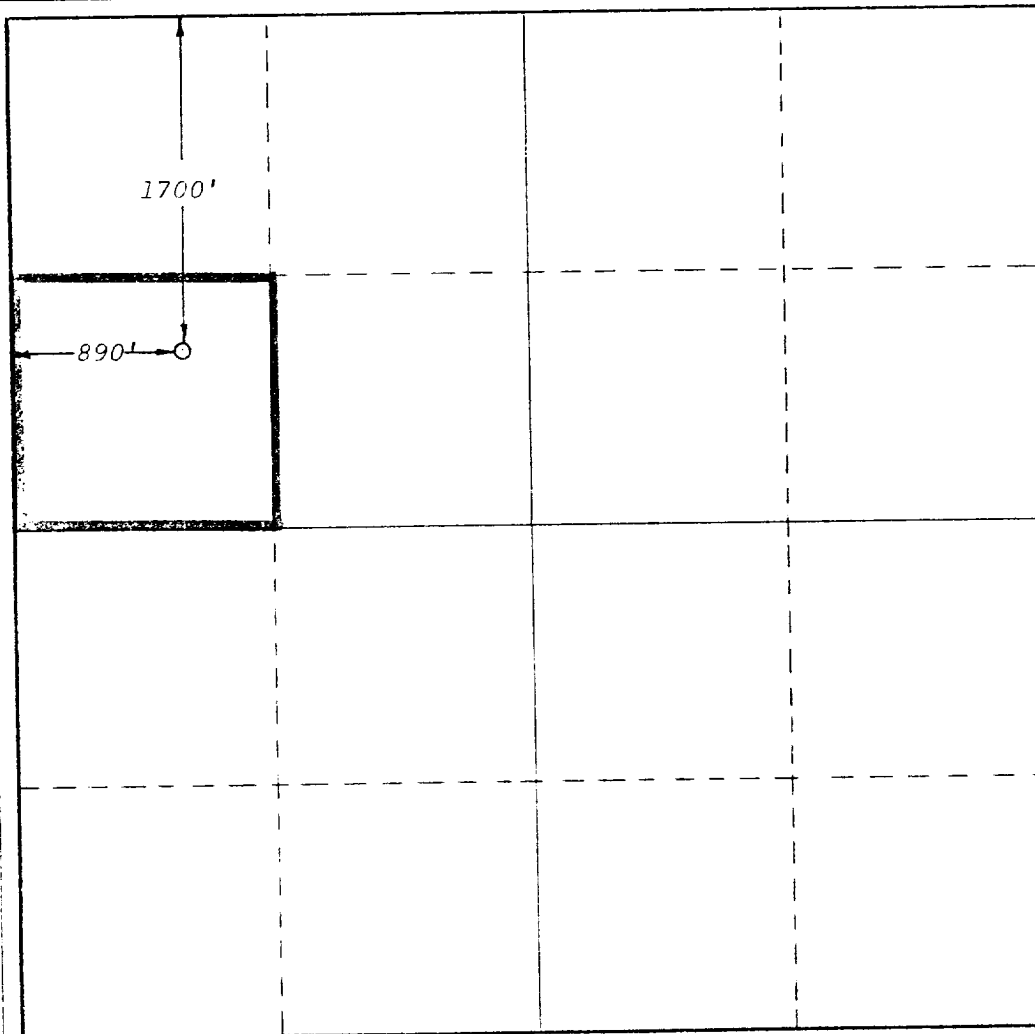
Lessor H.N.G. OIL COMPANY		Lease Wilson 21 Federal		Well No. 6 Y	
Tract Letter E	Section 21	Township 26-S	Range 36-E	County Lea	
Annual Percentage Location of Well:					
1700'	feet from the	North	line and	890'	feet from the
				West	line
2934'	Producers' Location Yates		Pool Und. Comanche Stateline		Dedicated Acreage 40

- Outline the acreage dedicated to the subject well by colored pencil or hachure marks on the plat below.
- If more than one lease is dedicated to the well, outline each and identify the ownership thereof (both as to working interest and royalty).
- If more than one lease of different ownership is dedicated to the well, have the interests of all owners been consolidated by communitization, unitization, force-pooling, etc?

Yes No If answer is "yes," type of consolidation _____

If answer is "no," list the owners and tract descriptions which have actually been consolidated. (Use reverse side of this form if necessary.) _____

No allowable will be assigned to the well until all interests have been consolidated (by communitization, unitization, forced-pooling, or otherwise) or until a non-standard unit, eliminating such interests, has been approved by the Commission.



CERTIFICATION

I hereby certify that the information contained herein is true and complete to the best of my knowledge and belief.

Name
Betty A. Gildon
 Position
Regulatory Clerk
 Company
HNG Oil Company
 Date
February 4, 1980

I hereby certify that the well location shown on this plat was plotted from field notes of actual surveys made by me or under my supervision, and that the same is true and correct to the best of my knowledge and belief.

Date
January 24, 1980
 Registered Professional Engineer
 No. 6689
 REGISTERED LAND SURVEYOR
 Gary D. Boswell
 Certificate No. 6689

