

NEW MEXICO OIL CONSERVATION COMMISSION
WELL LOCATION AND ACREAGE DEDICATION AT

Form C-102
Supersedes C-128
Effective 1-1-65

All distances must be from the outer boundaries of the Section.

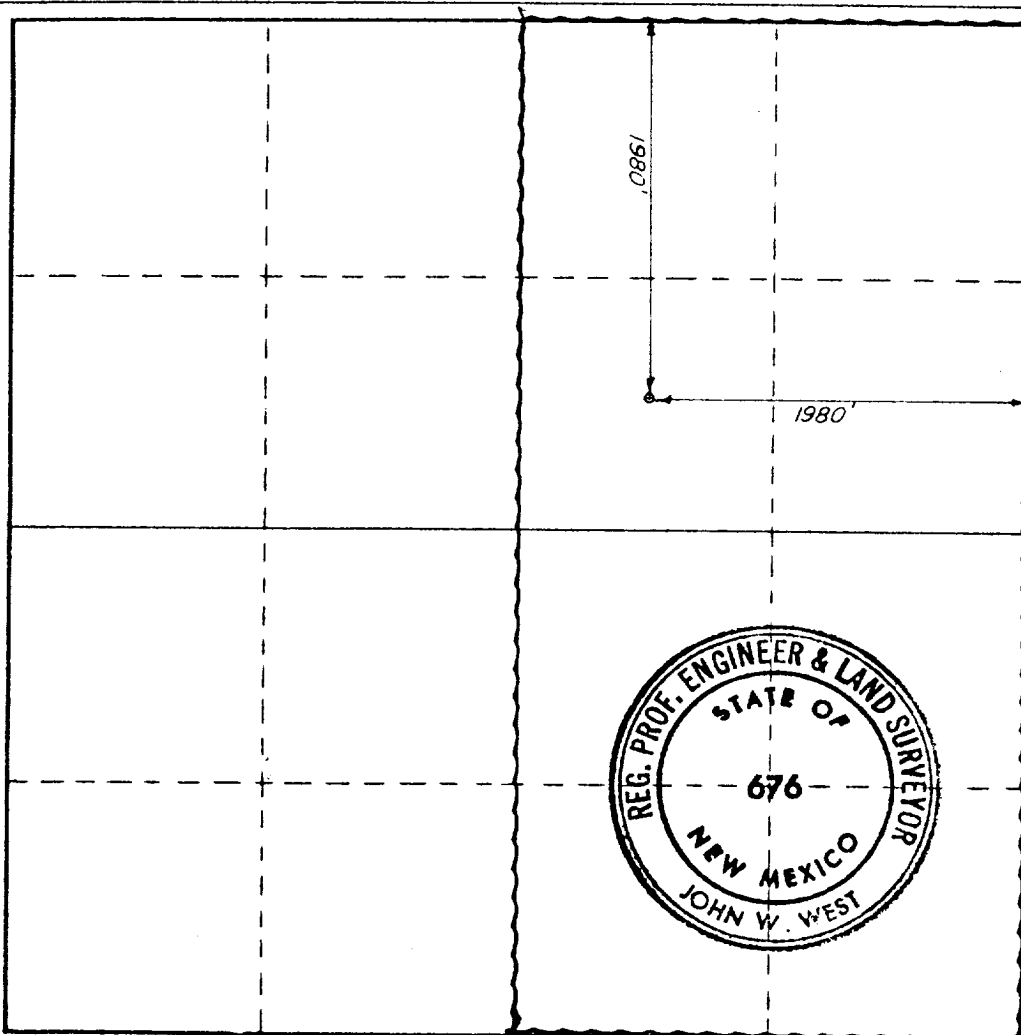
Operator AMOCO Production Co.		Lease State G R		Well No. 1
Unit Letter G	Section 17	Township 26 South	Range 33 East	County Lea
Actual Footage Location of Well: 1980 feet from the North line and 1980 feet from the East line				
Ground Level Elev. 3267.9	Producing Formation Morrow	Pool Und. Morrow	Dedicated Acreage: 320 Acres	

1. Outline the acreage dedicated to the subject well by colored pencil or hatchure marks on the plat below.
2. If more than one lease is dedicated to the well, outline each and identify the ownership thereof (both as to working interest and royalty).
3. If more than one lease of different ownership is dedicated to the well, have the interests of all owners been consolidated by communitization, unitization, force-pooling, etc?

☐ Yes ☐ No If answer is "yes," type of consolidation _____

If answer is "no," list the owners and tract descriptions which have actually been consolidated. (Use reverse side of this form if necessary.) _____

No allowable will be assigned to the well until all interests have been consolidated (by communitization, unitization, forced-pooling, or otherwise) or until a non-standard unit, eliminating such interests, has been approved by the Commission.



CERTIFICATION

I hereby certify that the information contained herein is true and complete to the best of my knowledge and belief.

Name **Bob Davis**
Position
Admin. Analyst
Company
Amoco Production Company

Date
5-1-80

I hereby certify that the well location shown on this plat was plotted from field notes of actual surveys made by me or under my supervision, and that the same is true and correct to the best of my knowledge and belief.

Date Surveyed
4-25-1980

Registered Professional Engineer and/or Land Surveyor

John W. West
Certificate No. **JOHN W. WEST 676**
PATRICK A. ROMERO 6883
Ronald J. Eidson 3239



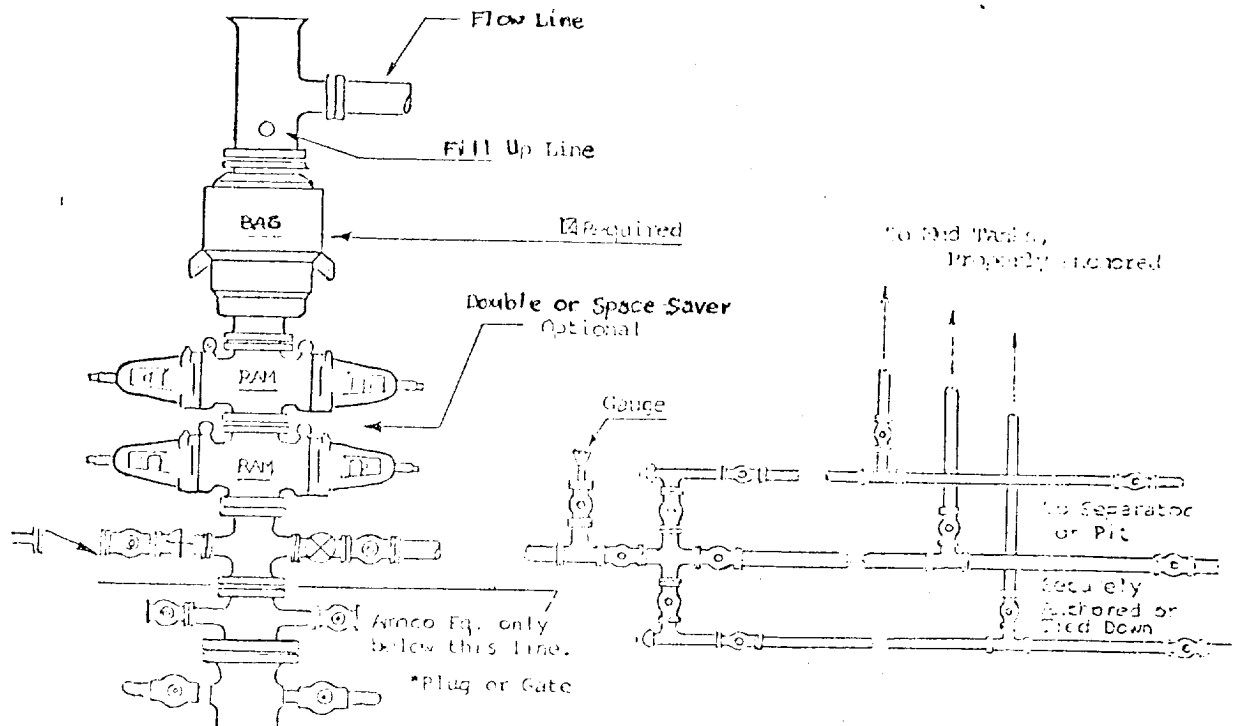
1. BOP'S TO BE FLUID OPERATED.
2. BOP'S AND ALL FITTINGS MUST BE IN GOOD CONDITION AND RATED AT 3000 PSI W.P. MINIMUM.
3. EQUIPMENT THROUGH WHICH BIT MUST PASS SHALL BE AT LEAST AS LARGE AS CASING SIZE BEING DRILLED THROUGH.
4. NIPPLE ABOVE BOP'S SHALL BE SAME SIZE AS LAST CASING SET.
5. UPPER KELLY COCK IS REQUIRED AND SHALL BE 3000# W.P. MINIMUM.
6. T. I. W. OR COMPARABLE SAFETY VALVE SHALL BE AVAILABLE ON RIG FLOOR WITH CONNECTION OR SUBS TO FIT ANY TOOL JOINT IN THE STRING. VALVE TO BE FULL BORE 5000# MIN.
7. VALVE NEXT TO SPOOL SHALL BE 4". OTHER EQUIPMENT MAY BE 3" OR 4". ALL CHOKE MANIFOLD EQUIPMENT SHALL BE FLANGED. FLOW LINE FROM MANIFOLD TO BE MINIMUM OF 3" AND STRAIGHT AS POSSIBLE WITH MINIMUM BENDS.
8. FLUID LINES FROM ACCUMULATOR TO BOP'S AND ALL REMOTE CONTROL FLUID LINES SHALL BE STEEL, AND RATED AT OR ABOVE MAXIMUM ACCUMULATOR PRESSURE. LINES SHALL BE ROUTED IN BUNDLES AND ADEQUATELY PROTECTED FROM DAMAGE.
9. USE RAMS IN FOLLOWING POSITIONS:*

	<u>DRILLING</u>	<u>RUNNING CASING</u>
UPPER RAM	DRILL PIPE	CASING
LOWER RAM	BLIND	BLIND

*AMOCO AREA SUPT. MAY REVERSE LOCATION OF RAMS.

10. CHOKE MANIFOLD, BEYOND SECOND VALVE FROM CROSS MAY BE OPTIONALLY POSITIONED OUTSIDE OF SUBSTRUCTURE.
11. EXTENSIONS AND HAND WHEELS TO BE INSTALLED AND BRACED AT ALL TIMES.
12. TWO INCH (2") LINES AND VALVES ARE PERMITTED ON THE KILL LINE.

NOTE: ALL UNMARKED VALVES MAY BE PLUG OR GATE VALVE, METAL TO METAL SEAL.



RECEIVED

MAY 2 1980

OIL CONSERVATION DIV.

100

LEA
AMOCO PRODUCTION CO.

Wildcat
1 State "GR"
Sec 17, T26S, R33E

NM
Page #3

1-12-81 Continued
LOG RUN: VEL5
12-27-80 TEMPORARY COMPLETION ISSUED
1-17-81 RE-ISSUE OF SUSPENDED COMPLETION

12-4-26 NM
IC 42-025-70277-80



Petroleum Information

RE-ISSUED COMPLETION

© Copyrighted Reproduction Prohibited

COUNTY	LEA	FIELD	Wildcat	STATE	NM
OPR	AMOCO PRODUCTION CO.			API	30-025-26785
NO	1	LEASE	State "GR"	MAP	
Sec 17, T26S, R33E				CO-ORD	
1980 FNL, 1980 FEL of Sec				12-4-26 NM	
37 mi SE/Halfway				SPD	5-10-80 CMP 12-1-80
CSG	WELL CLASS: INIT WF FIN WFD LSE. CODE				
16-802-950 sx	FORMATION	DATUM	FORMATION	DATUM	
10 3/4-4919-3900 sx					
7 5/8-12,400-950 sx					
5 1/2-lnr-11,891-15,931-800 sx					
2 7/8-13,760					
	ID	15,914 (MRRW)	PBD	15,165	
IP (Wolfcamp) Perfs 13,872-914 F 6500 MCFGPD. Pot based on 24 hr test thru 1/2 chk. GOR (NR): gty (NR); CP Pkr; TP 1000					
CONTR	Moranco #1	OPR ELEV	3045 GL	PD	15,500 RT

F.R. 6-16-80
 6-6-80 Drlg 8972
 6-13-80 Drlg 11,080 lm & sh
 6-23-80 TD 12,400; LDDP
 7-3-80 TD 13,056; Rng DST
 DST (Wolfcamp) 12,750-13,056, op 2 hrs 6 mins,
 rec 1870 FT DIST + 5500 FT WCUSH (Sampler rec
 17.3 CFT GAS + 1000 CC DIST @ 2500), 1 hr
 4 min ISIP 9163, FP 2495-3093, 2 hr 24 min
 FSIP 8522, HP 8622-8637
 7-8-80 Drlg 13,387 lm & sh
 7-18-80 Drlg 14,058 lm & sh
 7-24-80 Drlg 14,390 lm & sh
 7-28-80 TD 14,594; Fsg
 8-5-80 Drlg 14,069 lm & sd
 8-20-80 Drlg 15,723
 9-2-80 TD 15,914; WOCT
 9-25-80 TD 15,914; Rng Tbg

12-4-26 NM

LEA
AMOCO PRODUCTION CO.

Wildcat
1 State "GR"
Sec 17, T26S, R33E

NM
Page #2

10-6-80 TD 15,914; PBD 15,726; Tstg
Perf (Morrow) 15,064-624, 15,630 w/4 SPF
Flwd 65 BW in 11 hrs thru 48/64 chk
(15,604-636)
10-15-80 TD 15,914; PBD 15,726; Swbg
Perf (Morrow) 15,604-624, 15,630-636 w/4 SPF
Swbd 85 BW w/10-12 FT flare behind Swbd in
9 hrs (15,064-636)
10-20-80 TD 15,914; PBD 15,726; Swbg
Perf (Morrow) 15,386-396 w/4 SPF
10-27-80 TD 15,914; PBD 15,726; Prep Acid
11-3-80 TD 15,914; PBD 15,410; Swbg
PB to 15,410
Perf (Morrow) 15,386-396 w/4 SPF

12-4-26 NM

11-3-80 Continued
Acid (15,386-396) 2000 gals (7 1/2% MS)
Swbd 7 BLW + 13 BW in 7 hrs (15,386-396)
11-21-80 TD 15,914; PBD 15,410; Prep PB
11-26-80 TD 15,914; PBD 15,165; SI
PB to 15,165
Perf (Wolfcamp) 13,872-873, 13,914-917 w/2 SPF
Flwd small amt DIST w/15 ft flare thru 15/64
chk (13,872-917)
1-12-81 TD 15,914; PBD 15,165; Complete
Acid (13,872-917) 4000 gals (15% HCL)
Wolfcamp Discovery; No Suggested Field Name
LOG TOPS: Delaware Sand 4857, Bone Spring
9003, 3rd Bone Spring 11,632, Wolfcamp 12,071,
Strawn 14,218, Atoka 14,439, Morrow 14,730
12-4-26 NM

Petroleum Information.

COUNTY **LEA** FIELD **Wildcat** STAT **NM**
 OPR **AMOCO PRODUCTION CO.** API **30-02416785**
 NO **1** LEASE State **"GR"** MAP
 Sec **17, T26S, R33E** CO-ORD
1980 FNL, 1980 FEL of Sec **8-2-75 NM**
37 mi SE/Halfway RE SPD **12-23-81** REP **8-2-81**

CSG	WELL CLASS	INTWOX	FINWO	LSE. CODE
16-802-950 sx	FORMATION	DATE	FORMATION	DATE
10 3/4-4919-3900 sx	802	10-1-80		
7 5/8-12,400-950 sx	10-21	10-1-80		
5 1/2-1nr-11,891-15,931-800 sx	10-22	10-1-80		
	10-23	10-1-80		
	TD 15,914 (MRRW)			

DRY & ABANDONED

CONTR OPRSELEV **3045 GL** sub-s

8-9-82 F.R.C. 8-14-82 OWWO
 PD 15,165 WO (Atoka)
 (Orig. Cmp 12-1-80 thru (Wolfcamp) Perfs
 13,872-914; OTD 15,914; OPB 15,165)
 TD 15,914; Dry & Abandoned
 Cmt ret @ 13,870
 Sqzd (13,872-914) 50 sx
 DOC to 15,165
 Perf (Upper Wolfcamp) 13,555-804
 Acid (13,555-804) 5200 gals
 Swbd 1d w/NS (13,555-804)
 Cmt ret @ 13,455
 Sqzd (13,555-677) 100 sx
 DOC to 15,165
 Perf (Atoka) 14,737-970, 15,060-096
 Acid (14,737-15,096) 8000 gals + 1000
 SCFN2/bbl

8-2-75 NM

LEA
AMCCO PRODUCTION CO.

Wildcat
1 State "GR"
Sec 17, T26S, R33E

NM
Page #2

8-9-82

Continued

Flwd 2 BO + 20 BW in 6 hrs thru 24/64 chk, TP
120 (14,737-15,096)

CIBP @ 14,658

Cmt ret @ 13,407

Re-Sqz (13,55-677) 400 sx

DOC to 14,625

Perf. (Atoka) 14,478-484, 14,504-520,

14,530-556, 14,570-576, 14,594-598 w/2 SPF

Acid (14,478-598) 6700 gals + 1000 SCFN2/bbl

Swbd 8 BW w/NS (14,478-598)

8-14-82

COMPLETION ISSUED

8-2-75 NM

IC 30-025-70658-82

**NEW MEXICO OIL CONSERVATION COMMISSION
WELL LOCATION AND ACREAGE DEDICATION PLAT**

Form C-102
Supersedes C-128
Effective 1-1-65

All distances must be from the outer boundaries of the Section.

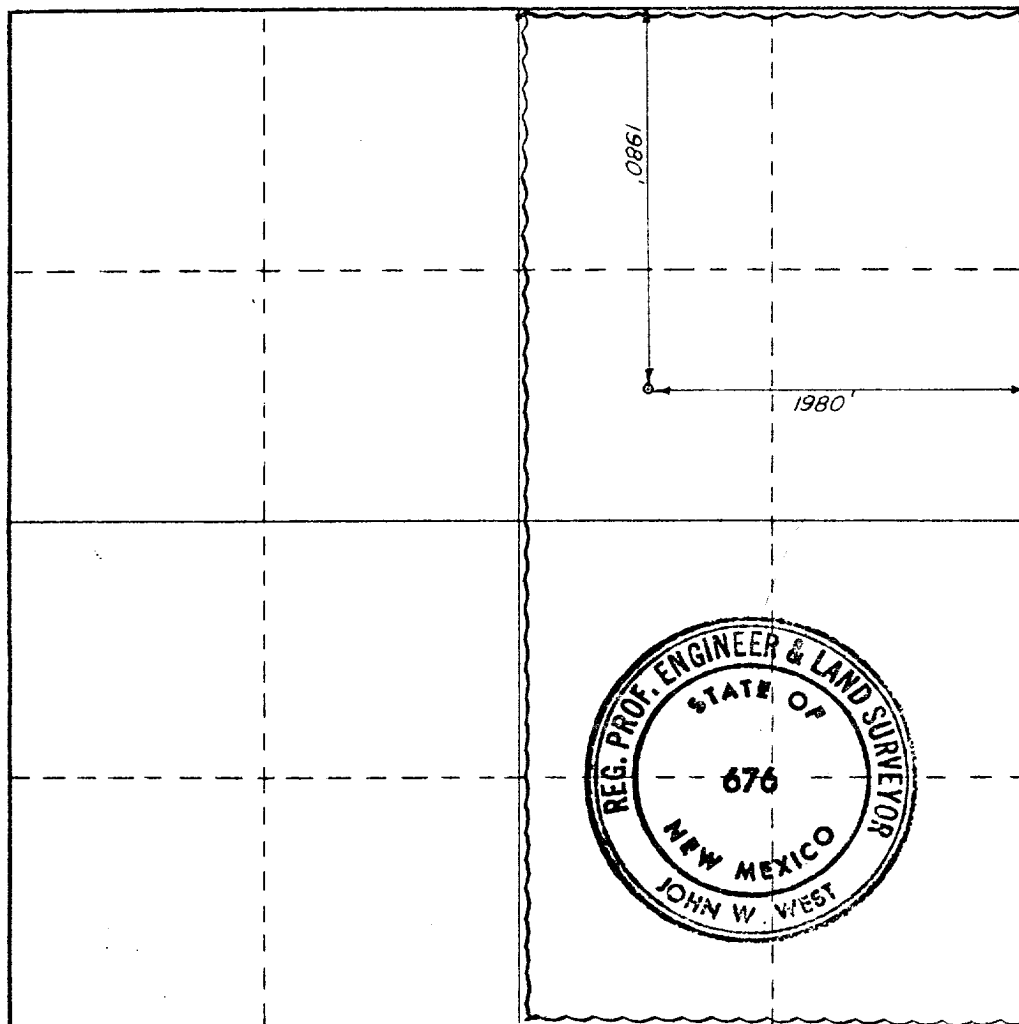
Operator AMOCO Production Co.			Lease State G R		Well No. 1
Unit Letter G	Section 17	Township 26 South	Range 33 East	County Lea	
Actual Footage Location of Well: 1980 feet from the North line and 1980 feet from the East line					
Ground Level Elev. 3267.9	Producing Formation Wolfcamp	Pool Und. Wolfcamp		Dedicated Acreage: 320 Acres	

1. Outline the acreage dedicated to the subject well by colored pencil or hachure marks on the plat below.
2. If more than one lease is dedicated to the well, outline each and identify the ownership thereof (both as to working interest and royalty).
3. If more than one lease of different ownership is dedicated to the well, have the interests of all owners been consolidated by communitization, unitization, force-pooling, etc?

☐ Yes ☐ No If answer is "yes," type of consolidation _____

If answer is "no," list the owners and tract descriptions which have actually been consolidated. (Use reverse side of this form if necessary.) _____

No allowable will be assigned to the well until all interests have been consolidated (by communitization, unitization, forced-pooling, or otherwise) or until a non-standard unit, eliminating such interests, has been approved by the Commission.



CERTIFICATION

I hereby certify that the information contained herein is true and complete to the best of my knowledge and belief.

Name Benton Green
 Position Assist. Admin. Analyst
 Company Amoco Production Company
 Date 1-20-81

I hereby certify that the well location shown on this plat was plotted from field notes of actual surveys made by me or under my supervision, and that the same is true and correct to the best of my knowledge and belief.

Date Surveyed 4-25-1980
 Registered Professional Engineer and/or Land Surveyor

John W. West
 Certificate No. JOHN W. WEST 67
PATRICK A. ROMERO 64
Ronald J. Eidson 37

