

RELEASED

NOV 18 1980

NOV 18 1980

HYDROSTATIC PRESSURE TEST - B.O.P.'s

AMOCO - STATE IT #1

MGF - RIG # 25

OCTOBER 4, 1980

by

YELLOW JACKET TOOLS AND SERVICES, INC.

CARLSBAD, NEW MEXICO

TESTED BY: RICHARD THORPE

SECTION - 16
TOWNSHIP - 26S
RANGE - 37E

TICKET NO. 31786

RECEIVED

NOV 03 1980

October 13, 1980

O. C. D.
ARTESIA CITY

Gentlemen,

We made a hydrostatic pressure test on your State IT #1, located in the Lea County, New Mexico area, in the Levelland, Texas district.

Test was made using (plug) 10" OCT or (packer) _____ or (both) _____.

When we arrived, the rig was nippling up stack

These changes were made to BOP since previous test first test

List any delay observed to operation of BOPs during test: and, loss of closing pressure (other than hydril test) none

(Corrected) _____

List items replaced during testing: none

Closures were made using pump _____ accumulators x both _____ with observed pressure of 1800 for test to ram type BOPs and 1800 for test on Hydril.

Accumulator bottles 8 were pressured to 2500 at end of test.

Control valves operating as indicated on closing unit manifold except: OK

Extensions were _____ or were not x hooked up to BOPs at end of test.

No test desired to _____ Casing, Kelly cock or safety valve _____

Not in rig inventors at time of test _____

Items leaking at the conclusion of testing and/or malfunction of BOPs at end of test; none

A drawing of surface control equipment has been prepared to show any leaks and malfunctions. A report taken from field notes and a pressure chart of the test, are also enclosed.

Your comments and suggestions will be appreciated, 915-366-4436.

Sincerely yours,

Yellow Jacket Tools and Services, Inc.



Billy Duff
President
bde/Enclosures

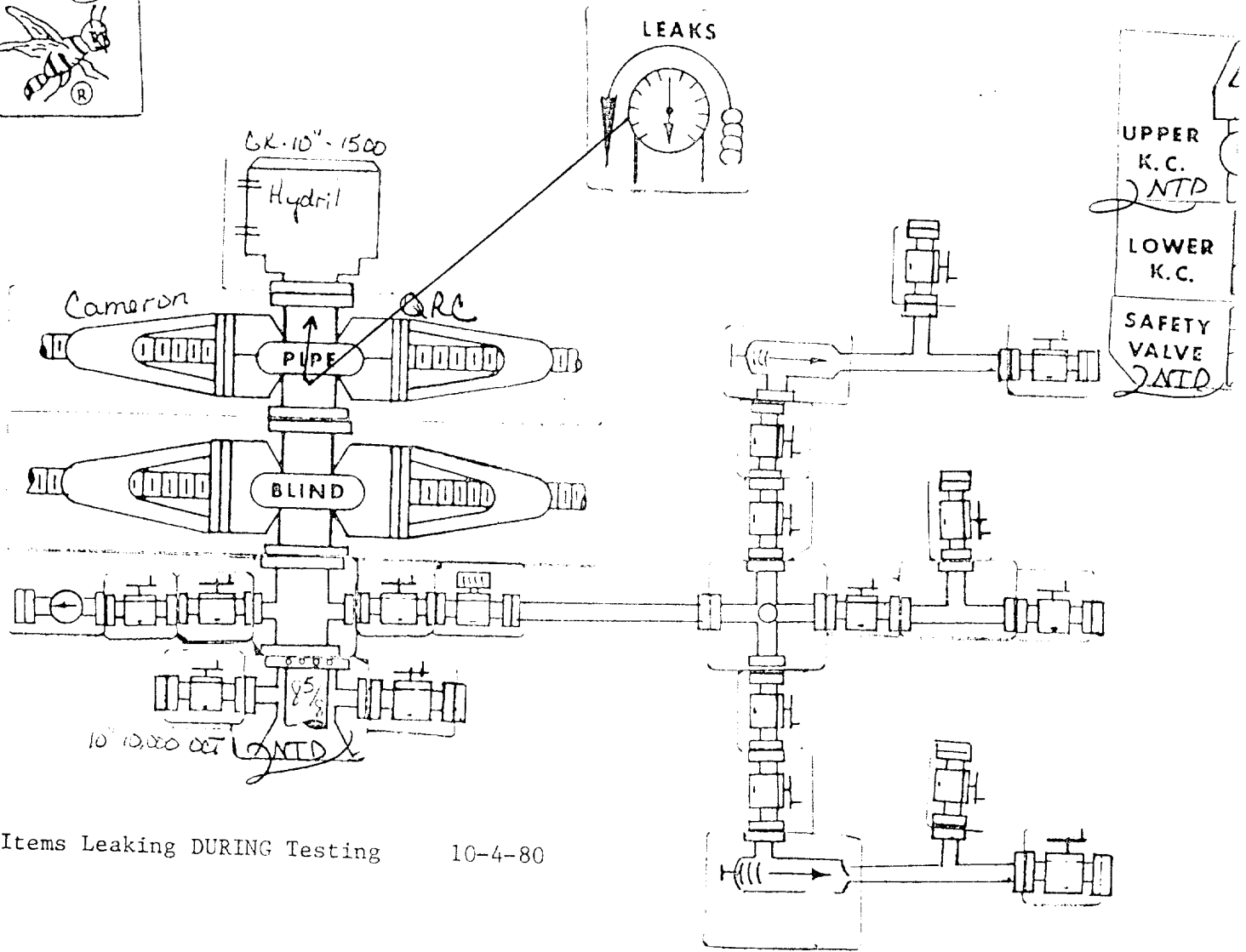
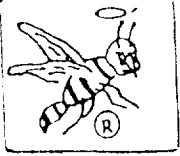


Test #	Items Tested	Pressure Pt. gauge connection	Pressure	Minutes Held	Results
1	Manifold with inside chokeline valve and inside valves closed		5000#	15 min	No visible leak, closed outside valves, outlet and upper outlet valve
2	"	"	5000#	15 min	No visible leak, closed wing valves and upper wing valves
3	"	"	5000#	15 min	No visible leak
4	Swaco valve	"	5000#	15 min	No visible leak
5	Blind rams, inside kill-line valve and inside valves on manifold closed	"	5000#	15 min	No visible leak, closed outside kill-line valve, operate 5000# No visible leak, test check valve 1000#, No visible leak
6	"	"	1000#check 5000#	10 min 15 min	No visible leak
7	Pipe rams, inside kill-line valve and outside chokeline valve closed	down drill pipe	1000#		Leak through pipe rams operate
8	"	"	2000#		Same leak, operate
9	"	"	2000#		Same leak, operate
10	"	"	1800#		Same leak, operate
11	"	"	5000#	15 min	No visible leak
12	Hydril, inside kill-line and chokeline valves closed	"	5000#	15 min	Lost & repressure No visible leak
2nd Chart					

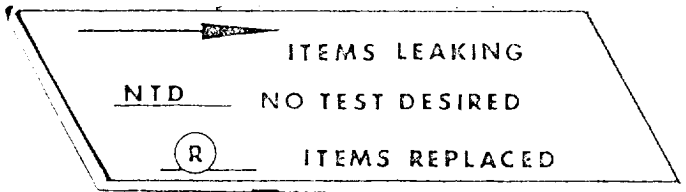
13 Kelly

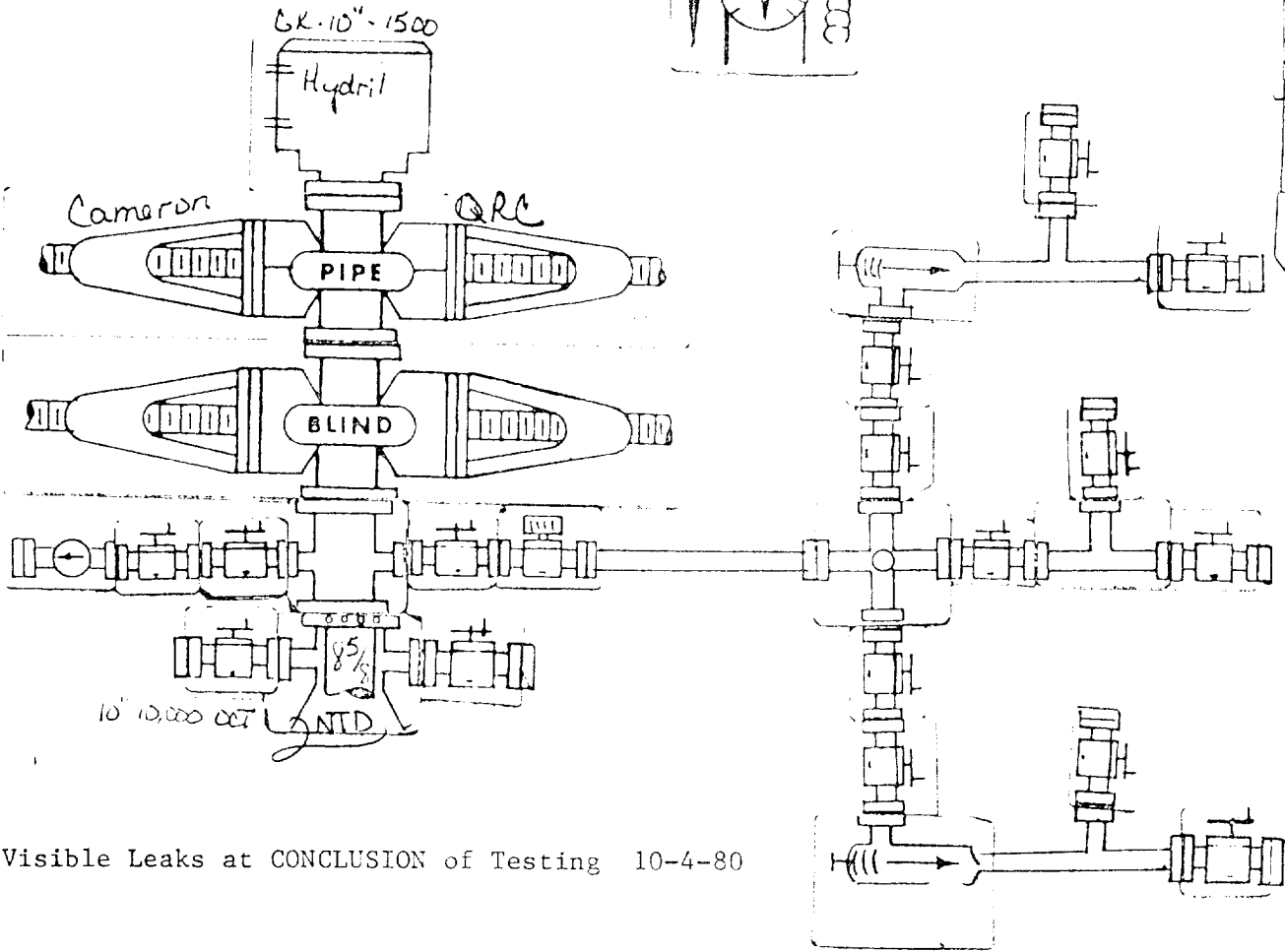
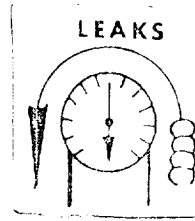
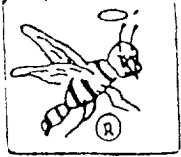
kelly sub

Toop Pusher N.T.D. to Kelly



Items Leaking DURING Testing 10-4-80





No Visible Leaks at CONCLUSION of Testing 10-4-80

