

Submit 3 Copies

to Appropriate

District Office

DISTRICT I

PO Box 1980, Hobbs, NM 88241-1980

DISTRICT II

PO Drawer DD, Artesia, NM 88210

DISTRICT III

1000 Rio Brazos Rd., Aztec, NM 87410

State of New Mexico  
Energy, Minerals and Natural Resources Department

Form C-103

Revised 1-1-89

**OIL CONSERVATION DIVISION**

2040 Pacheco St.  
Santa Fe, NM 87505

WELL API NO.

30-025-27212

5. Indicate Type of Lease

STATE ☐

FEE ☐

6. State Oil & Gas Lease No.

7. Lease Name or Unit Agreement Name

Whitten

1. Type of Well

OIL

GAS

WELL ☒

WELL ☐

OTHER

2. Name of Operator

Primal Energy Corporation

3. Address of Operator

222 Pennbriant, Suite 115, Houston, TX 77090

4. Well Location

Unit Letter E 1650 Feet From The North Line and 2310 Feet From The West Line

Section 33

Township 23S

Range 36E

NMPM

Lea

County

10 Elevation (Show whether DF, RKB, RT, GR, etc.)

3415.5'GR

Check Appropriate Box to Indicate Nature of Notice, Report, or Other Data

**NOTICE OF INTENTION TO:**

PERFORM REMEDIAL WORK ☐

PLUG AND ABANDON ☒

TEMPORARILY ABANDON ☐

CHANGE PLANS ☐

PULL OR ALTER CASING ☐

OTHER ☐

**SUBSEQUENT REPORT OF:**

REMEDIAL WORK ☐

ALTERING CASING ☐

COMMENCE DRILLING OPNS ☐

PLUG & ABANDONMENT ☐

CASING TEST & CEMENT JOB ☐

OTHER ☐

12. Describe Proposed or Completed Operations (Clearly state all pertinent details, and give pertinent dates, including estimated date of starting any proposed work) SEE RULE 1103

1. POCH with rods, pump and tubing.
2. Set CIBP @ 3200' with 20' cement cap.
3. Set cement plug from 1400' to 1200' using 20 sx.
4. Set cement plug from 100' to surface using 10 sx.
5. Install marker in top of well.

I hereby certify that the information above is true and complete to the best of my knowledge and belief.

SIGNATURE

TITLE Manager, Operations & Engineering

DATE 3/1/97

TYPE OR PRINT NAME

John Abernethy

TELEPHONE NO. 281-875-5100

(This space for State Use)

APPROVED BY

TITLE

DATE

CONDITIONS OF APPROVAL, IF ANY

**MAR 11 1997**

Whitten #1  
Lea Co., NM  
Proposed Wellbore Schematic

Surface plug w/ 10 sx. from 100' - 0'

Cmt. plug #2 w/ 20 sx. from 1200-1400'

8 5/8", 24ppf, K-55 set @ 1287'.  
Cmt'd w/600 sx. C+4% gel followed  
by 250 sx. C+2% CaCl

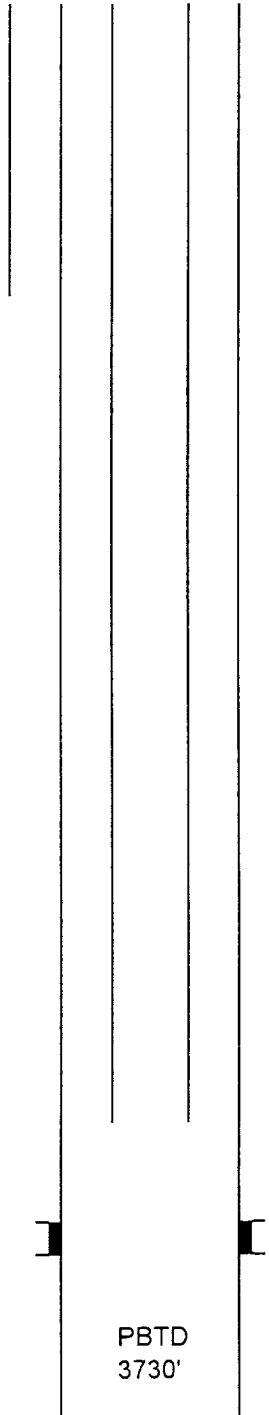
CIBP w/ 20' cement @ 3200'

Prod. perms - 3480-3706'

PBTD  
3730'

5 1/2", 15.5ppf, K-55 set @3748'.  
Cmt'd w/600 sx. Lite + 250 sx.  
C:Poz Circ. to surface.

Whitten #1  
Lea Co., NM  
Present Wellbore Schematic



8 5/8", 24ppf, K-55 set @ 1287'.  
Cmt'd w/600 sx. C+4% gel followed  
by 250 sx. C+2% CaCl

2 3/8" tubing @ 3686'  
S.N. @ 3655'

Prod. perms - 3480-3706'

PBTD  
3730'

5 1/2", 15.5ppf, K-55 set @3748'.  
Cmt'd w/600 sx. Lite + 250 sx.  
C:Poz. Circ. to surface.