

COPY TO O. G. S.

SUBMIT IN TRIPLICATE
(Other instructions on
reverse side)

30-025-27375

Form approved.
Budget Bureau No. 42-R1425.

LC 068281-B

UNITED STATES
DEPARTMENT OF THE INTERIOR
GEOLOGICAL SURVEY

APPLICATION FOR PERMIT TO DRILL, DEEPEN, OR PLUG BACK

1a. TYPE OF WORK

DRILL ☒DEEPEN ☐PLUG BACK ☐

b. TYPE OF WELL

OIL
WELL ☒GAS
WELL ☐

OTHER

SINGLE
ZONE ☒MULTIPLE
ZONE ☐

2. NAME OF OPERATOR

CONOCO INC.

3. ADDRESS OF OPERATOR

P. O. Box 460, Hobbs, N.M. 88240

4. LOCATION OF WELL (Report location clearly and in accordance with any State requirements.)*

At surface 660' FSL & 1720' FWL

At proposed prod. zone

14. DISTANCE IN MILES AND DIRECTION FROM NEAREST TOWN OR POST OFFICE*

15. DISTANCE FROM PROPOSED*

LOCATION TO NEAREST
PROPERTY OR LEASE LINE, FT.
(Also to nearest drlg. unit line, if any)

18. DISTANCE FROM PROPOSED LOCATION*

TO NEAREST WELL, DRILLING, COMPLETED,
OR APPLIED FOR, ON THIS LEASE, FT.

21. ELEVATIONS (Show whether DF, RT, GR, etc.)

3191' GR (est)

23.

PROPOSED CASING AND CEMENTING PROGRAM

| SIZE OF HOLE | SIZE OF CASING | WEIGHT PER FOOT | SETTING DEPTH | QUANTITY OF CEMENT |
|--------------|----------------|-----------------|---------------|--------------------|
| 12 1/4" | 8 5/8" | 24 # | 1500' | 1232 5x circulate |
| 7 7/8" | 5 1/2" | 15.5 # | 4500' | 1393 5x circulate |

It is proposed to drill a straight hole to a total depth of 4500' and complete it as an East Mason Delaware oil well.

See attachments for 10 point well plan and 13 point surface use plan.

RECEIVED

MAR 11 1981

U.S. GEOLOGICAL SURVEY
HOBBS, NEW MEXICO

IN ABOVE SPACE DESCRIBE PROPOSED PROGRAM: If proposal is to deepen or plug back, give data on present productive zone and proposed new productive zone. If proposal is to drill or deepen directionally, give pertinent data on subsurface locations and measured and true vertical depths. Give blowout preventer program, if any.

24.

SIGNED

Administrative Supervisor

DATE March 10, 1981

(This space for Federal or State office use)

PERMIT NO.

(Sgt.) GEORGE H. STEWART

APPROVAL DATE

APPROVED BY

TITLE

DATE

CONDITIONS OF APPROVAL

JAMES A. GILLHAM
DISTRICT SUPERVISOR

*See Instructions On Reverse Side

CHICAGO

RECEIVED

APR 21 1981

OTC CONSERVATION DIV.

NEW MEXICO OIL CONSERVATION COMMISSION
WELL LOCATION AND ACREAGE DEDICATION PLAT

Form O-102
Supersedes O-128
Effective 1-1-65

All distances must be from the outer boundaries of the Section.

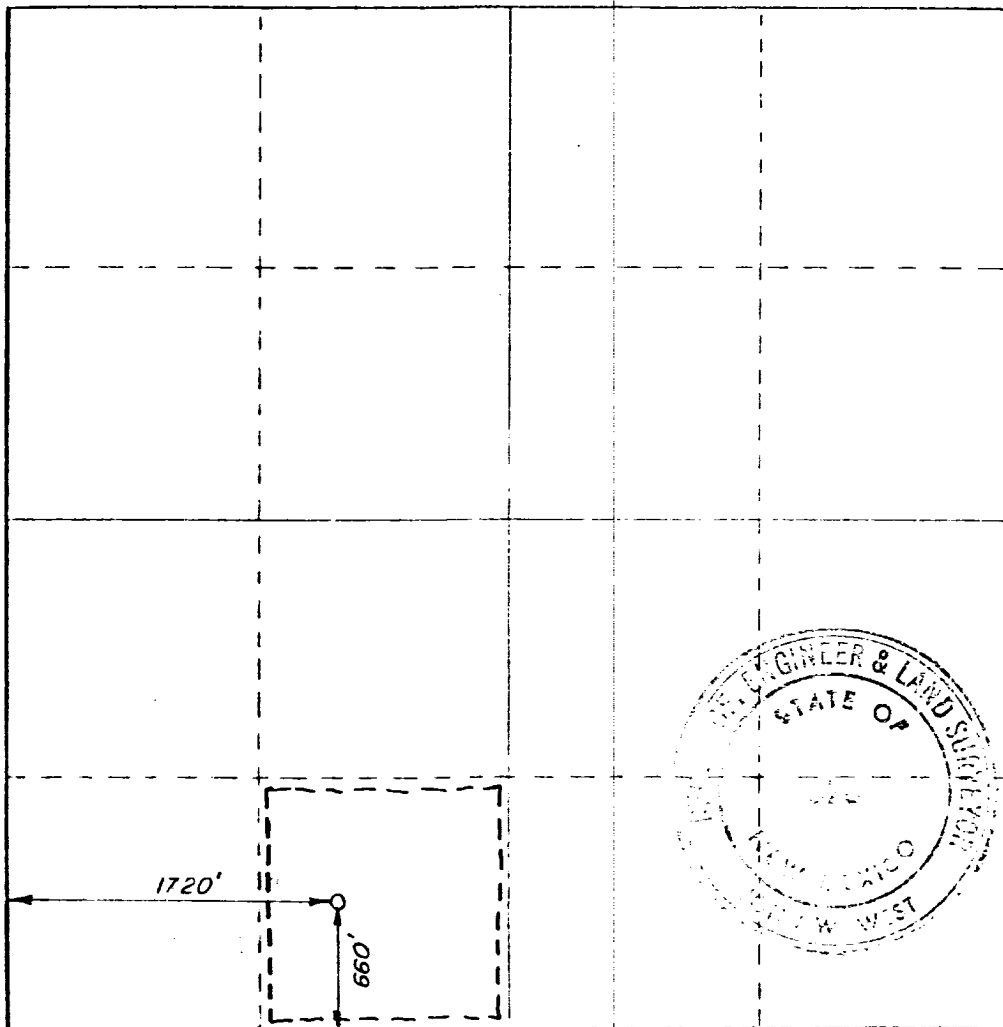
| | | | | | | | | |
|---|--|-----------------------------|------------------------------------|---|--|---------------------------------------|--|--|
| Operator CONOCO INC. | | | Lease RUSSELL FED. 17 | | | Well No. 1 | | |
| Unit Letter N | Section 17 | Township 26 South | Range 32 East | County Lea County, New Mexico | | | | |
| Actual Footage Location of Well: 660 feet from the South line and 1720 feet from the West line | | | | | | | | |
| Ground Level Elev. 3190.8 | Producing Formation Delaware | | Pool East Mason Delaware | | | Dedicated Acreage: 40 Acres | | |

1. Outline the acreage dedicated to the subject well by colored pencil or hatchure marks on the plat below.
2. If more than one lease is dedicated to the well, outline each and identify the ownership thereof (both as to working interest and royalty).
3. If more than one lease of different ownership is dedicated to the well, have the interests of all owners been consolidated by communitization, unitization, force-pooling, etc?

☐ Yes ☐ No If answer is "yes," type of consolidation _____

If answer is "no," list the owners and tract descriptions which have actually been consolidated. (Use reverse side of this form if necessary.) _____

No allowable will be assigned to the well until all interests have been consolidated (by communitization, unitization, forced-pooling, or otherwise) or until a non-standard unit, eliminating such interests, has been approved by the Commission.



CERTIFICATION

I hereby certify that the information contained herein is true and complete to the best of my knowledge and belief.

Name W. A. Butler
Position Administrative Supervisor
Company Conoco Inc.
Date March 10, 1981

I hereby certify that the well location shown on this plat was plotted from field notes of actual surveys made by me or under my supervision, and that the same is true and correct to the best of my knowledge and belief.

Date Surveyed January 22, 1981

Registered Professional Engineer
No. 171 State of N.M. Surveyor

John W. West
Certificate No. JOHN W. WEST 678
PATRICK A. POWERS 2463
Donald L. Fisher 3230

RECEIVED
APR 21 1984
OIL CONSERVATION DIV.