

NEW MEXICO OIL CONSERVATION COMMISSION
WELL LOCATION AND ACREAGE DEDICATION PLAT

Form C-102
Supersedes C-128
Effective 1-1-65

All distances must be from the outer boundaries of the Section

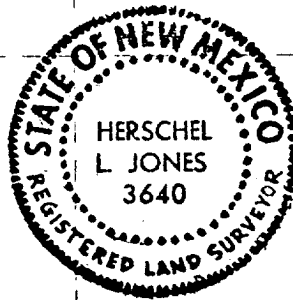
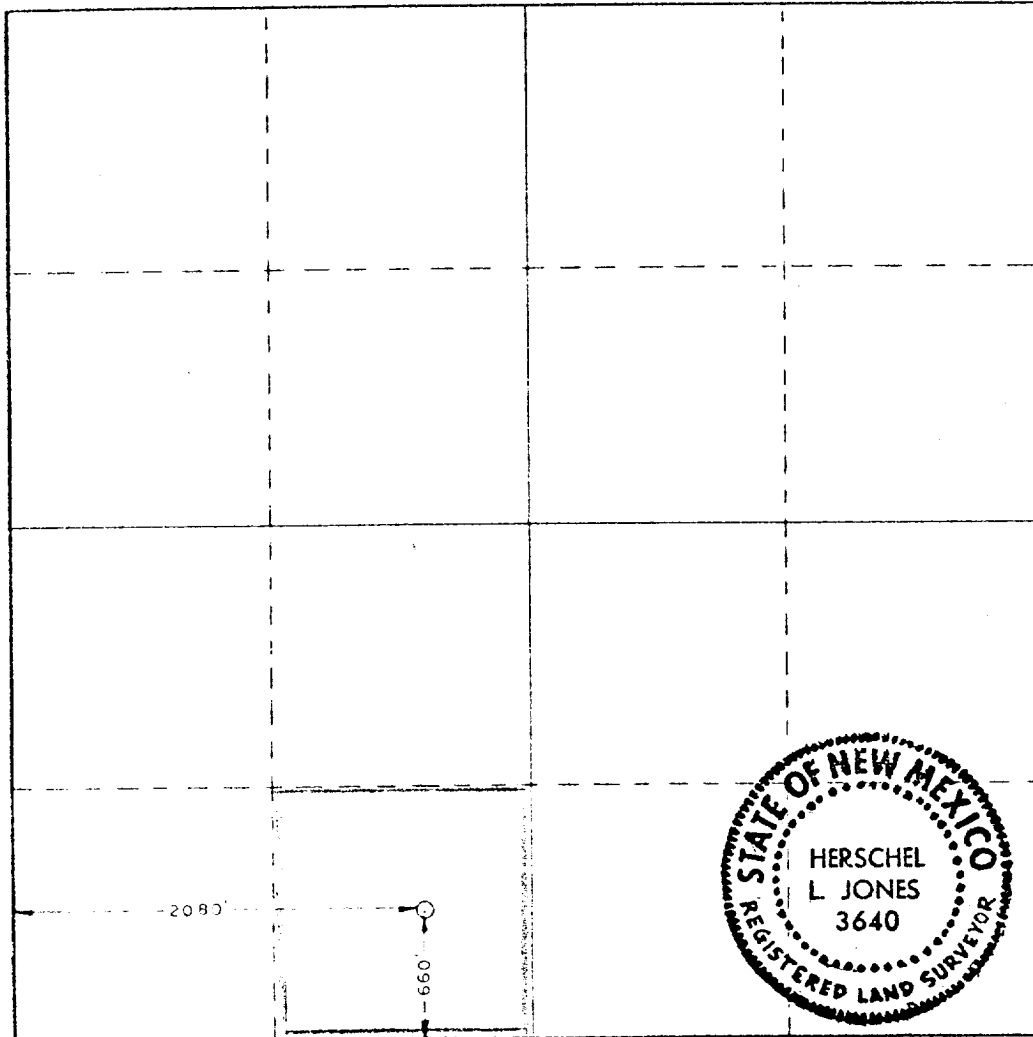
| | | | | | |
|--|-------------------------------------|--|---|----------------------|-----------------------|
| Operator GETTY OIL COMPANY | | | Lease Myers Langlie Mattix Unit | | Well No. 40 |
| Tract Letter N | Section 30 | Township 23 South | Range 37 East | County Lea | |
| Actual Well Location of Well: | | | | | |
| 660 feet from the South line and | | 2080 feet from the West line | | | |
| Well Depth (feet) 3342.1 | Producing Formation Queen | Pool Langlie Mattix | Estimated Acreage 40 Acres | | |

1. Outline the acreage dedicated to the subject well by colored pencil or hachure marks on the plat below.
2. If more than one lease is dedicated to the well, outline each and identify the ownership thereof (both as to working interest and royalty).
3. If more than one lease of different ownership is dedicated to the well, have the interests of all owners been consolidated by communitization, unitization, force-pooling, etc?

Yes No If answer is "yes," type of consolidation _____

If answer is "no," list the owners and tract descriptions which have actually been consolidated. (Use reverse side of this form if necessary.) _____

No allowable will be assigned to the well until all interests have been consolidated (by communitization, unitization, forced-pooling, or otherwise) or until a non-standard unit, eliminating such interests, has been approved by the Commission.



CERTIFICATION

I hereby certify that the information contained herein is true and complete to the best of my knowledge and belief.

Dale R. Crockett
Signature

Dale R. Crockett

Position

Area Superintendent

Company

Getty Oil Company

Date

April 7, 1981

I hereby certify that the well location shown on this plat was plotted from field notes of actual surveys made by me or under my supervision, and that the same is true and correct to the best of my knowledge and belief.

Date surveyed

March 28, 1981

Registered Professional Engineer and or Land Surveyor

Herschel L. Jones
Signature

Certificate No.

3640