

COUNTY LEA FIELD *Wildcat
 OPR HNG OIL CO.
 NO 1 LEASE Madera "32" State Com.
 Sec 32, T24S, R34E
 660 FNL, 1980 FWL of Sec
 31 mi SE/Halfway
 SPD 12-24-81
 MAP 5-5-82
 RECORD 6-1-40 NM

WELL CLASS. INIT	D	FIN	*WFL	USE CODE
FORMATION	DATUM	FORMATION	DATUM	
13 3/8-585-550 sx				
9 5/8-5170-3375 sx				
7-13,250-1100 sx				
4 1/2-1nr-12,927-15,400-450 sx				
2 7/8-12,925				
TD 15,400 (PSLV)				
PRD 15,302				

IP (Morrow) Perfs 14,723-15,018 CAOF 8485 MCF/GPD. GOR 183;
 gty (Gas) .584; (Cond) 43.6; SIWHP 7253; SIBHP 9112

CONTR Parker #211 OPRSELY 3468 GL sub-s 19

1-4-82 F.R. 12-14-81
 1-11-82 PD 16,000 RT (Morrow)
 1-15-82 Drlg 4413 Anhy & 1m
 1-25-82 Drlg 5790 sd
 2-8-82 Drlg 8301 sd & 1m
 2-16-82 Drlg 9856 sh, 1m & cht
 3-1-82 TD 13,250; Rng 7 Csg
 3-8-82 Drlg 13,710
 3-22-82 Drlg 14,275 sh
 3-29-82 Drlg 14,639 sh & 1m
 4-5-82 Drlg 14,909 sh
 4-12-82 Drlg 15,295 sh
 4-19-82 TD 15,400; WOC
 TD 15,400; WOCU
 TD 15,400 SI
 Perf (Morrow) 15,243-250
 Acid (15,243-250) 3000 gals

6-1-40 NM

LEA
HNC OIL CO.

*Wildcat
1 Madera "32" State Com. NM
Sec 32, T24S, R34E Page #2

4-19-82 Continued
Flwd wtr w/2 ft flare in 2 hrs 30 mins
(15,243-250)
5-3-82 TD 15,400; PBD 15,302; Tstg
Sqzd (15,243-250) 100 sx; DOC to 15,302
Perf (Morrow) 14,723-726, 14,960, 14,961, 14,974,
14,975, 14,980, 14,982, 14,984, 14,986, 14,988,
14,990, 14,992, 14,994, 15,000, 15,002, 15,008,
15,010, 15,012, 15,014, 15,016, 15,018
Acid (14,723-15,018) 5000 gals
5-10-82 TD 15,400; PBD 15,302, WO PLC
FARO 3900 MCFGPD, TP 5150 (14,723-15,018)
5-31-82 TD 15,400; PBD 15,302; Complete
6-1-40 NM

5-31-82

Continued
(Morrow) FOUR POINT GAUGES:
Flwd 1325 MCFGPD, adj chk, 60 mins, TP 6882
Flwd 2464 MCFGPD adj chk, 60 mins, TP 6407
Flwd 3848 MCFGPD, adj chk, 60 mins, TP 5667
Flwd 4388 MCFGPD, adj chk, 60 mins, TP 5128
*Morrow Discovery, No Suggested Field Name
LOG TOPS: Rustler 1115, Delaware 5292,
Cherry Canyon 6284, Wolfcamp 12,286, Strawn
13,606, Atoka 13,764, Morrow Lime 14,200, Morrow
Clastics 14,410
BHT 203 deg @ 12,800

* Denotes changes & additions

6-1-40 NM

LEA
HNG OIL CO.

*Wildcat NM
1 Madera "32" State Com. Page #3
Sec 32, T24S, R34E

6-5-82
6-26-82

COMPLETION ISSUED
RE-ISSUED COMPLETION TO AMEND FIELD: Formerly
Double X, W.

6-1-40 NM
IC 30-025-70717-81

**NEW MEXICO OIL CONSERVATION COMMISSION
WELL LOCATION AND ACREAGE DEDICATION PLAT**

Form C-102
Supersedes C-128
Effective 1-1-65

All distances must be from the outer boundaries of the Section.

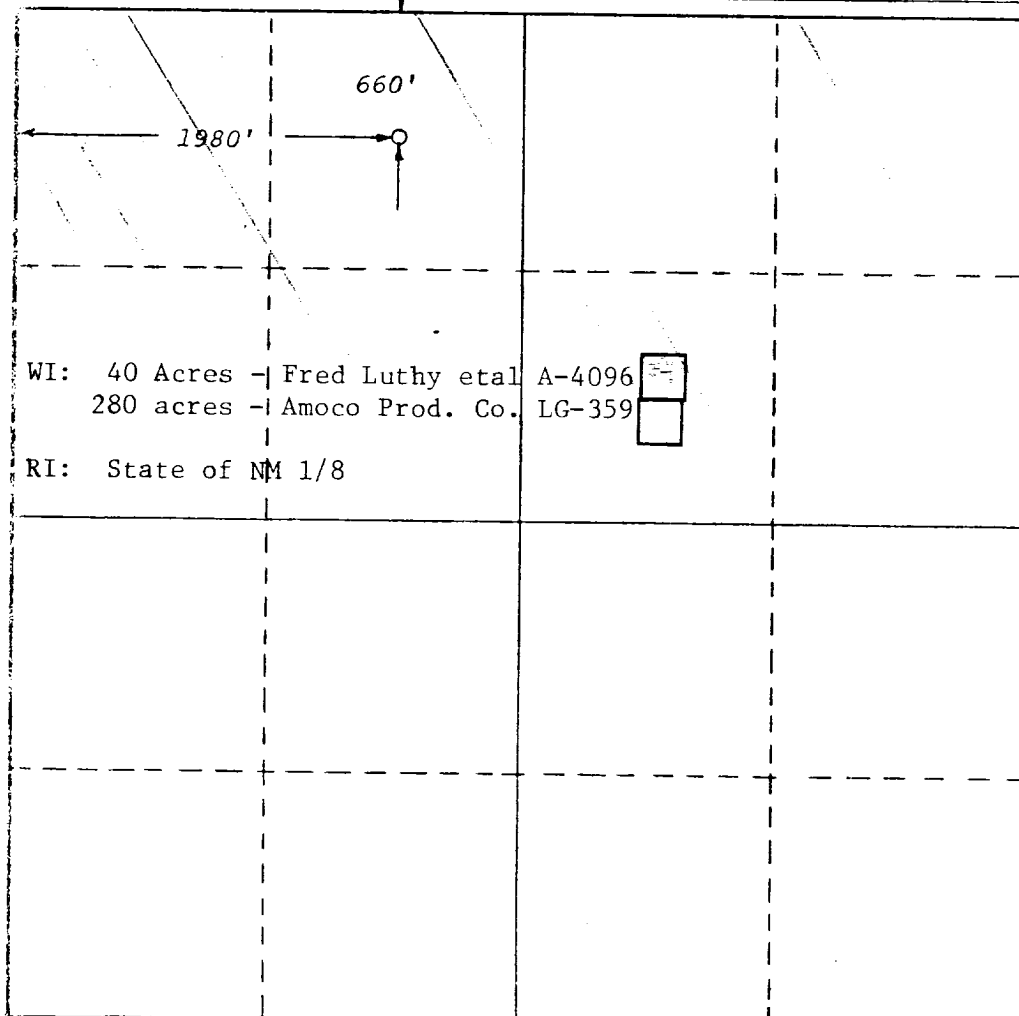
Operator H.N.G. OIL COMPANY			Lease MADERA 32 STATE COM		Well No. 1
Unit Letter C	Section 32	Township T-24-S	Range R-34-E	County LEA	
Actual Footage Location of Well:					
660 feet from the NORTH line and		1980 feet from the WEST line			
Ground Level Elev. 3468'	Producing Formation Atoka		Pool Wildcat	Dedicated Acreage: 320 Acres	

1. Outline the acreage dedicated to the subject well by colored pencil or hachure marks on the plat below.
2. If more than one lease is dedicated to the well, outline each and identify the ownership thereof (both as to working interest and royalty).
3. If more than one lease of different ownership is dedicated to the well, have the interests of all owners been consolidated by communitization, unitization, force-pooling, etc?

☐ Yes ☐ No If answer is "yes," type of consolidation Communitization agreement being circulated for execution.

If answer is "no," list the owners and tract descriptions which have actually been consolidated. (Use reverse side of this form if necessary.) _____

No allowable will be assigned to the well until all interests have been consolidated (by communitization, unitization, forced-pooling, or otherwise) or until a non-standard unit, eliminating such interests, has been approved by the Commission.



CERTIFICATION

I hereby certify that the information contained herein is true and complete to the best of my knowledge and belief.

Betty Gildon

Name

Betty Gildon

Position

Regulatory Analyst

Company

HNG OIL COMPANY

Date

April 30, 1982

I hereby certify that the well location shown on this plat was plotted from field notes of actual surveys made by me or under my supervision, and that the same is true and correct to the best of my knowledge and belief.

Date Surveyed

GARY D. BOSWELL
Dec. 3, 1981

Registered Professional Engineer and/or Land Surveyor

Certificate No.

6689