

NEW MEXICO OIL CONSERVATION COMMISSION
WELL LOCATION AND ACREAGE DEDICATION PLAT

Form C-102
Supersedes C-128
Effective 1-1-65

All distances must be from the outer boundaries of the Section

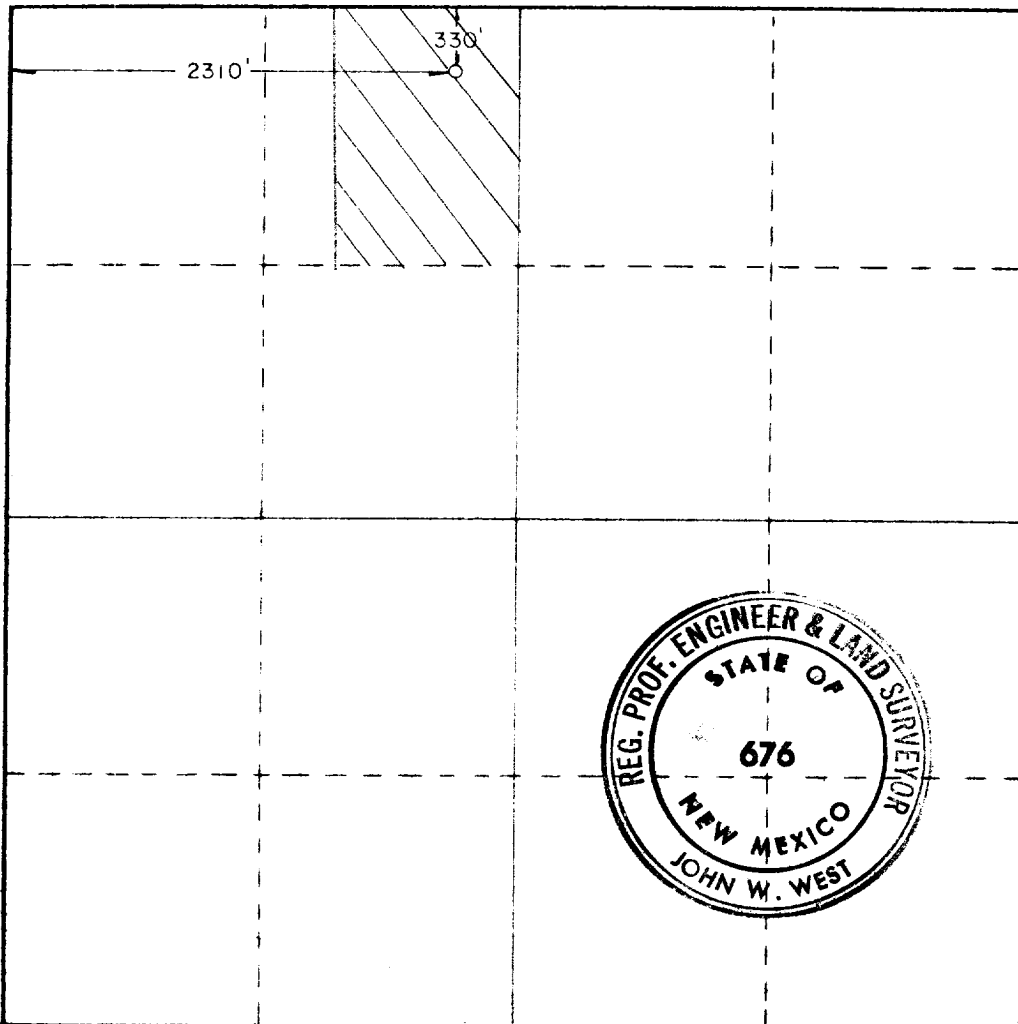
Operator Lewis B. Burleson, Inc.			Lease Jameson		Well No. 1
Unit Letter C	Section 15	Township 24 South	Range 36 East	County Lea	
Actual Footage Location of Well: 330 feet from the north line and 2310 feet from the west line					
Ground Level Elev. 3382 L	Producing Formation Yates		Pool Jalmat	Dedicated Acreage: 90 Acres	

1. Outline the acreage dedicated to the subject well by colored pencil or hachure marks on the plat below.
2. If more than one lease is dedicated to the well, outline each and identify the ownership thereof (both as to working interest and royalty).
3. If more than one lease of different ownership is dedicated to the well, have the interests of all owners been consolidated by communitization, unitization, force-pooling, etc?

☐ Yes ☐ No If answer is "yes," type of consolidation _____

If answer is "no," list the owners and tract descriptions which have actually been consolidated. (Use reverse side of this form if necessary.) _____

No allowable will be assigned to the well until all interests have been consolidated (by communitization, unitization, forced-pooling, or otherwise) or until a non-standard unit, eliminating such interests, has been approved by the Commission.



CERTIFICATION

I hereby certify that the information contained herein is true and complete to the best of my knowledge and belief.

Name William J. Jones
Position **Superintendent**

Company **Lewis B. Burleson, Inc.**

Date **May 14, 1982**

I hereby certify that the well location shown on this plat was plotted from field notes of actual surveys made by me or under my supervision, and that the same is true and correct to the best of my knowledge and belief.

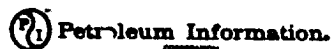
Date Surveyed
4-30-82

Registered Professional Engineer and/or Land Surveyor

John W. West
Certificate No. **JOHN W. WEST 676**
PATRICK A. ROMERO 6665
Ronald J. Eidson 3239



RECEIVED
MAY 17 982
FBI
FEDERAL BUREAU OF INVESTIGATION
U.S. DEPARTMENT OF JUSTICE



A Division of H. K. Brown Company

© Copyrighted Reproduction Prohibited

COUNTY LEA FIELD Jalmat STATE NM
OPR BURLESON, LEWIS B., INC. API 30-025-27825
NO 1 LEASE Jameson MAP
Sec 15, T24S, R36E CO-ORD
330 FNL, 2310 FWL of Sec 7-5-65 NM
8 mi NW/Jal SPD 6-1-82 CMP 7-7-82

CSG 8 5/8-1445-500 sx 4 1/2-3649-300 sx 2 3/8-3595	WELL CLASS: INIT D FIN DO LSE CODE			
	FORMATION	DATUM	FORMATION	DATUM
	ID 3666 (SVRV)	PBD		

IP (Seven Rivers) OH 3649-66 F 15 BOPD + 25 BW. Pot based
on 24 hr test thru 16/64 chk. GOR 9000; gty (NR), Pkr; TP 20

CONTR Rod Ric #11 OPRSELEV 3282 GL sub-s 9

F.R. 5-24-82
PD 3900 RT (Seven Rivers)
7-31-82 AMEND ZONE: Formerly (Yates)
6-7-82 TD 3666; Trip
6-15-82 TD 3666; WOCU
7-1-82 TD 3666; Prep Acid OH
7-6-82 TD 3666; SI
Acid (3649-59) 2700 gals
Swbd gas w/SSO (3649-59)
7-13-82 TD 3666; SI Bldg Batt.
Flwd 15 BO + 25 BW + 135 MCFGPD in 24 hrs thru
16/64 chk (3649-59)
7-26-82 TD 3666; Complete
LOG TOPS: Rustler 1420, Salt 1520, Base Salt
1810, Yates 3354, Seven Rivers 3650
7-31-82 COMPLETION ISSUED
7-5-65 NM
IC 30-025-70445-82