

**NEW MEXICO OIL CONSERVATION COMMISSION
WELL LOCATION AND ACREAGE DEDICATION PLAT**

Form C-102
Supersedes C-128
Effective 1-1-65

All distances must be from the outer boundaries of the Section.

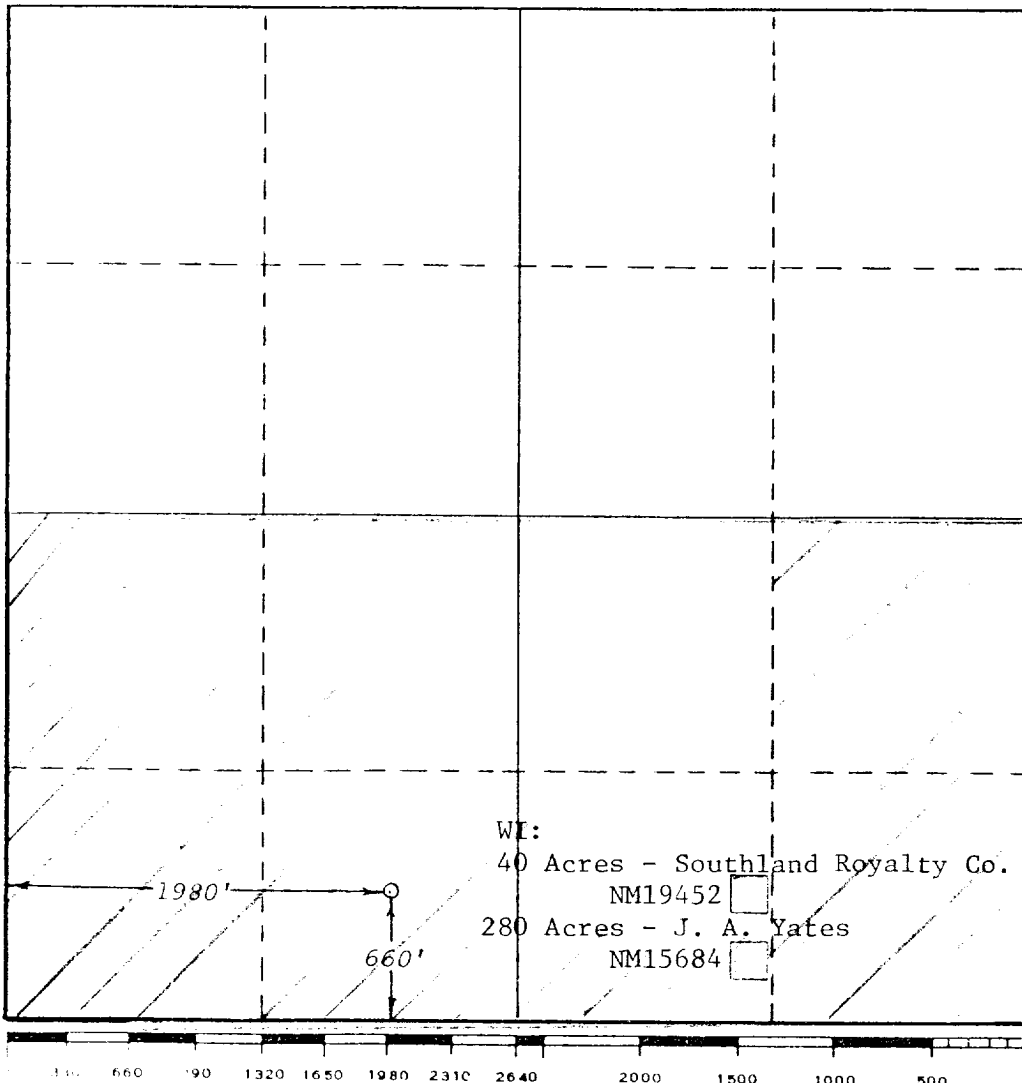
Operator H.N.G. OIL COMPANY			Lease Medera 28 Federal Com		Well No. 1
Unit Letter	Section 28	Township 24-S	Range 34-E	County LEA	
Actual Footage Location of Well:					
660	feet from the	SOUTH	line and	1980	feet from the WEST line
Ground Level Elev. 3460'	Producing Formation Morrow		Pool Wildcat		Dedicated Acreage: 320 Acres

1. Outline the acreage dedicated to the subject well by colored pencil or hachure marks on the plat below.
2. If more than one lease is dedicated to the well, outline each and identify the ownership thereof (both as to working interest and royalty).
3. If more than one lease of different ownership is dedicated to the well, have the interests of all owners been consolidated by communitization, unitization, force-pooling, etc?

☐ Yes ☐ No If answer is "yes," type of consolidation _____

If answer is "no," list the owners and tract descriptions which have actually been consolidated. (Use reverse side of this form if necessary.) _____

No allowable will be assigned to the well until all interests have been consolidated (by communitization, unitization, forced-pooling, or otherwise) or until a non-standard unit, eliminating such interests, has been approved by the Commission.



CERTIFICATION

I hereby certify that the information contained herein is true and complete to the best of my knowledge and belief.

Cheryl Minces

Name

Cheryl Minces

Position

Regulatory Manager

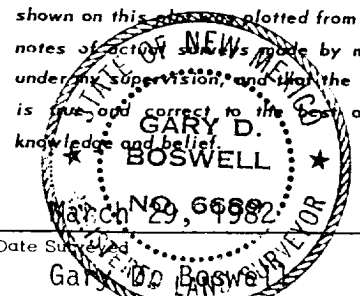
Company

HNG Oil Company

Date

April 30, 1982

I hereby certify that the well location shown on this plat was plotted from field notes of actual surveys made by me or under my supervision, and that the same is true and correct to the best of my knowledge and belief.



Date Surveyed

March 29, 1982

Registered Professional Engineer and/or Land Surveyor

Gary D. Boswell
Certificate No.

6689