

COUNTY LZA FIELD Scarborough STATE NM  
 OFR HUFF, JACK API 30-025-27998  
 NO 1 LEASE Shearn State MAP  
Sec 32, T26S, R37E CO-ORD  
544 FSL, 1980 FEL of Sec 1-3-55 NM  
5 mi S/Bennett SPD 10-31-82 CMP \*2-28-83

CSC

8 5/8-\*1209-300 SX  
 4 1/2- 3350-350 SX  
 \*2 7/8-3221

WELL CLASS: INIT D FIN *DO LSE. CODE			
FORMATION	DATUM	FORMATION	DATUM
TD 3350 (*SVRV)		PBD *3293	

\*IP (Yates- Seven Rivers) Perfs 2983-3220 P 67 BOPD + 968 BWL  
 Pot based on 24 hr test. GOR 865; gty 36

CONF OPRS ELEV 2945 GL

11-1-82 F.R. 11-1-82  
 11-15-82 PD 3200 RT (Yates)  
 11-22-82 Drlg 1000  
 11-17-83 TD 3350; WOCT  
 \*Perf (Yates-Seven Rivers) @ 2983, 2985, 2987, 2989, 2991, 2993, 2995, 2997, 2999, 3001, 3003, 3005, 3007, 3009, 3011, 3013, 3015, 3017, 3019, 3021, 3023, 3025, 3027, 3029, 3031, 3033, 3035, 3037, 3039, 3041, 3043, 3045, 3047, 3049, 3051, 3053, 3055, 3057, 3059, 3061, 3063, 3065, 3067, 3069, 3071, 3073, 3075, 3077, 3079, 3081, 3083, 3085, 3087, 3089, 3091, 3093, 3095, 3097, 3099, 3101, 3103, 3105, 3107, 3109, 3111, 3113, 3115, 3117, 3119, 3121, 3123, 3125, 3127, 3129, 3131, 3133, 3135, 3137, 3139, 3141, 3143, 3145, 3147, 3149, 3151, 3153, 3155, 3157, 3159, 3161, 3163, 3165, 3167, 3169, 3171, 3173, 3175, 3177, 3179, 3181, 3183, 3185, 3187, 3189, 3191, 3193, 3195, 3197, 3199, 3201, 3203, 3205, 3207, 3209, 3211, 3213, 3215, 3217, 3219, 3221, 3223, 3225, 3227, 3229, 3231, 3233, 3235, 3237, 3239, 3241, 3243, 3245, 3247, 3249, 3251, 3253, 3255, 3257, 3259, 3261, 3263, 3265, 3267, 3269, 3271, 3273, 3275, 3277, 3279, 3281, 3283, 3285, 3287, 3289, 3291, 3293, 3295, 3297, 3299, 3301, 3303, 3305, 3307, 3309, 3311, 3313, 3315, 3317, 3319, 3321, 3323, 3325, 3327, 3329, 3331, 3333, 3335, 3337, 3339, 3341, 3343, 3345, 3347, 3349, 3351, 3353, 3355, 3357, 3359, 3361, 3363, 3365, 3367, 3369, 3371, 3373, 3375, 3377, 3379, 3381, 3383, 3385, 3387, 3389, 3391, 3393, 3395, 3397, 3399, 3401, 3403, 3405, 3407, 3409, 3411, 3413, 3415, 3417, 3419, 3421, 3423, 3425, 3427, 3429, 3431, 3433, 3435, 3437, 3439, 3441, 3443, 3445, 3447, 3449, 3451, 3453, 3455, 3457, 3459, 3461, 3463, 3465, 3467, 3469, 3471, 3473, 3475, 3477, 3479, 3481, 3483, 3485, 3487, 3489, 3491, 3493, 3495, 3497, 3499, 3501, 3503, 3505, 3507, 3509, 3511, 3513, 3515, 3517, 3519, 3521, 3523, 3525, 3527, 3529, 3531, 3533, 3535, 3537, 3539, 3541, 3543, 3545, 3547, 3549, 3551, 3553, 3555, 3557, 3559, 3561, 3563, 3565, 3567, 3569, 3571, 3573, 3575, 3577, 3579, 3581, 3583, 3585, 3587, 3589, 3591, 3593, 3595, 3597, 3599, 3601, 3603, 3605, 3607, 3609, 3611, 3613, 3615, 3617, 3619, 3621, 3623, 3625, 3627, 3629, 3631, 3633, 3635, 3637, 3639, 3641, 3643, 3645, 3647, 3649, 3651, 3653, 3655, 3657, 3659, 3661, 3663, 3665, 3667, 3669, 3671, 3673, 3675, 3677, 3679, 3681, 3683, 3685, 3687, 3689, 3691, 3693, 3695, 3697, 3699, 3701, 3703, 3705, 3707, 3709, 3711, 3713, 3715, 3717, 3719, 3721, 3723, 3725, 3727, 3729, 3731, 3733, 3735, 3737, 3739, 3741, 3743, 3745, 3747, 3749, 3751, 3753, 3755, 3757, 3759, 3761, 3763, 3765, 3767, 3769, 3771, 3773, 3775, 3777, 3779, 3781, 3783, 3785, 3787, 3789, 3791, 3793, 3795, 3797, 3799, 3801, 3803, 3805, 3807, 3809, 3811, 3813, 3815, 3817, 3819, 3821, 3823, 3825, 3827, 3829, 3831, 3833, 3835, 3837, 3839, 3841, 3843, 3845, 3847, 3849, 3851, 3853, 3855, 3857, 3859, 3861, 3863, 3865, 3867, 3869, 3871, 3873, 3875, 3877, 3879, 3881, 3883, 3885, 3887, 3889, 3891, 3893, 3895, 3897, 3899, 3901, 3903, 3905, 3907, 3909, 3911, 3913, 3915, 3917, 3919, 3921, 3923, 3925, 3927, 3929, 3931, 3933, 3935, 3937, 3939, 3941, 3943, 3945, 3947, 3949, 3951, 3953, 3955, 3957, 3959, 3961, 3963, 3965, 3967, 3969, 3971, 3973, 3975, 3977, 3979, 3981, 3983, 3985, 3987, 3989, 3991, 3993, 3995, 3997, 3999, 4001, 4003, 4005, 4007, 4009, 4011, 4013, 4015, 4017, 4019, 4021, 4023, 4025, 4027, 4029, 4031, 4033, 4035, 4037, 4039, 4041, 4043, 4045, 4047, 4049, 4051, 4053, 4055, 4057, 4059, 4061, 4063, 4065, 4067, 4069, 4071, 4073, 4075, 4077, 4079, 4081, 4083, 4085, 4087, 4089, 4091, 4093, 4095, 4097, 4099, 4101, 4103, 4105, 4107, 4109, 4111, 4113, 4115, 4117, 4119, 4121, 4123, 4125, 4127, 4129, 4131, 4133, 4135, 4137, 4139, 4141, 4143, 4145, 4147, 4149, 4151, 4153, 4155, 4157, 4159, 4161, 4163, 4165, 4167, 4169, 4171, 4173, 4175, 4177, 4179, 4181, 4183, 4185, 4187, 4189, 4191, 4193, 4195, 4197, 4199, 4201, 4203, 4205, 4207, 4209, 4211, 4213, 4215, 4217, 4219, 4221, 4223, 4225, 4227, 4229, 4231, 4233, 4235, 4237, 4239, 4241, 4243, 4245, 4247, 4249, 4251, 4253, 4255, 4257, 4259, 4261, 4263, 4265, 4267, 4269, 4271, 4273, 4275, 4277, 4279, 4281, 4283, 4285, 4287, 4289, 4291, 4293, 4295, 4297, 4299, 4301, 4303, 4305, 4307, 4309, 4311, 4313, 4315, 4317, 4319, 4321, 4323, 4325, 4327, 4329, 4331, 4333, 4335, 4337, 4339, 4341, 4343, 4345, 4347, 4349, 4351, 4353, 4355, 4357, 4359, 4361, 4363, 4365, 4367, 4369, 4371, 4373, 4375, 4377, 4379, 4381, 4383, 4385, 4387, 4389, 4391, 4393, 4395, 4397, 4399, 4401, 4403, 4405, 4407, 4409, 4411, 4413, 4415, 4417, 4419, 4421, 4423, 4425, 4427, 4429, 4431, 4433, 4435, 4437, 4439, 4441, 4443, 4445, 4447, 4449, 4451, 4453, 4455, 4457, 4459, 4461, 4463, 4465, 4467, 4469, 4471, 4473, 4475, 4477, 4479, 4481, 4483, 4485, 4487, 4489, 4491, 4493, 4495, 4497, 4499, 4501, 4503, 4505, 4507, 4509, 4511, 4513, 4515, 4517, 4519, 4521, 4523, 4525, 4527, 4529, 4531, 4533, 4535, 4537, 4539, 4541, 4543, 4545, 4547, 4549, 4551, 4553, 4555, 4557, 4559, 4561, 4563, 4565, 4567, 4569, 4571, 4573, 4575, 4577, 4579, 4581, 4583, 4585, 4587, 4589, 4591, 4593, 4595, 4597, 4599, 4601, 4603, 4605, 4607, 4609, 4611, 4613, 4615, 4617, 4619, 4621, 4623, 4625, 4627, 4629, 4631, 4633, 4635, 4637, 4639, 4641, 4643, 4645, 4647, 4649, 4651, 4653, 4655, 4657, 4659, 4661, 4663, 4665, 4667, 4669, 4671, 4673, 4675, 4677, 4679, 4681, 4683, 4685, 4687, 4689, 4691, 4693, 4695, 4697, 4699, 4701, 4703, 4705, 4707, 4709, 4711, 4713, 4715, 4717, 4719, 4721, 4723, 4725, 4727, 4729, 4731, 4733, 4735, 4737, 4739, 4741, 4743, 4745, 4747, 4749, 4751, 4753, 4755, 4757, 4759, 4761, 4763, 4765, 4767, 4769, 4771, 4773, 4775, 4777, 4779, 4781, 4783, 4785, 4787, 4789, 4791, 4793, 4795, 4797, 4799, 4801, 4803, 4805, 4807, 4809, 4811, 4813, 4815, 4817, 4819, 4821, 4823, 4825, 4827, 4829, 4831, 4833, 4835, 4837, 4839, 4841, 4843, 4845, 4847, 4849, 4851, 4853, 4855, 4857, 4859, 4861, 4863, 4865, 4867, 4869, 4871, 4873, 4875, 4877, 4879, 4881, 4883, 4885, 4887, 4889, 4891, 4893, 4895, 4897, 4899, 4901, 4903, 4905, 4907, 4909, 4911, 4913, 4915, 4917, 4919, 4921, 4923, 4925, 4927, 4929, 4931, 4933, 4935, 4937, 4939, 4941, 4943, 4945, 4947, 4949, 4951, 4953, 4955, 4957, 4959, 4961, 4963, 4965, 4967, 4969, 4971, 4973, 4975, 4977, 4979, 4981, 4983, 4985, 4987, 4989, 4991, 4993, 4995, 4997, 4999, 5001, 5003, 5005, 5007, 5009, 5011, 5013, 5015, 5017, 5019, 5021, 5023, 5025, 5027, 5029, 5031, 5033, 5035, 5037, 5039, 5041, 5043, 5045, 5047, 5049, 5051, 5053, 5055, 5057, 5059, 5061, 5063, 5065, 5067, 5069, 5071, 5073, 5075, 5077, 5079, 5081, 5083, 5085, 5087, 5089, 5091, 5093, 5095, 5097, 5099, 5101, 5103, 5105, 5107, 5109, 5111, 5113, 5115, 5117, 5119, 5121, 5123, 5125, 5127, 5129, 5131, 5133, 5135, 5137, 5139, 5141, 5143, 5145, 5147, 5149, 5151, 5153, 5155, 5157, 5159, 5161, 5163, 5165, 5167, 5169, 5171, 5173, 5175, 5177, 5179, 5181, 5183, 5185, 5187, 5189, 5191, 5193, 5195, 5197, 5199, 5201, 5203, 5205, 5207, 5209, 5211, 5213, 5215, 5217, 5219, 5221, 5223, 5225, 5227, 5229, 5231, 5233, 5235, 5237, 5239, 5241, 5243, 5245, 5247, 5249, 5251, 5253, 5255, 5257, 5259, 5261, 5263, 5265, 5267, 5269, 5271, 5273, 5275, 5277, 5279, 5281, 5283, 5285, 5287, 5289, 5291, 5293, 5295, 5297, 5299, 5301, 5303, 5305, 5307, 5309, 5311, 5313, 5315, 5317, 5319, 5321, 5323, 5325, 5327, 5329, 5331, 5333, 5335, 5337, 5339, 5341, 5343, 5345, 5347, 5349, 5351, 5353, 5355, 5357, 5359, 5361, 5363, 5365, 5367, 5369, 5371, 5373, 5375, 5377, 5379, 5381, 5383, 5385, 5387, 5389, 5391, 5393, 5395, 5397, 5399, 5401, 5403, 5405, 5407, 5409, 5411, 5413, 5415, 5417, 5419, 5421, 5423, 5425, 5427, 5429, 5431, 5433, 5435, 5437, 5439, 5441, 5443, 5445, 5447, 5449, 5451, 5453, 5455, 5457, 5459, 5461, 5463, 5465, 5467, 5469, 5471, 5473, 5475, 5477, 5479, 5481, 5483, 5485, 5487, 5489, 5491, 5493, 5495, 5497, 5499, 5501, 5503, 5505, 5507, 5509, 5511, 5513, 5515, 5517, 5519, 5521, 5523, 5525, 5527, 5529, 5531, 5533, 5535, 5537, 5539, 5541, 5543, 5545, 5547, 5549, 5551, 5553, 5555, 5557, 5559, 5561, 5563, 5565, 5567, 5569, 5571, 5573, 5575, 5577, 5579, 5581, 5583, 5585, 5587, 5589, 5591, 5593, 5595, 5597, 5599, 5601, 5603, 5605, 5607, 5609, 5611, 5613, 5615, 5617, 5619, 5621, 5623, 5625, 5627, 5629, 5631, 5633, 5635, 5637, 5639, 5641, 5643, 5645, 5647, 5649, 5651, 5653, 5655, 5657, 5659, 5661, 5663, 5665, 5667, 5669, 5671, 5673, 5675, 5677, 5679, 5681, 5683, 5685, 5687, 5689, 5691, 5693, 5695, 5697, 5699, 5701, 5703, 5705, 5707, 5709, 5711, 5713, 5715, 5717, 5719, 5721, 5723, 5725, 5727, 5729, 5731, 5733, 5735, 5737, 5739, 5741, 5743, 5745, 5747, 5749, 5751, 5753, 5755, 5757, 5759, 5761, 5763, 5765, 5767, 5769, 5771, 5773, 5775, 5777, 5779, 5781, 5783, 5785, 5787, 5789, 5791, 5793, 5795, 5797, 5799, 5801, 5803, 5805, 5807, 5809, 5811, 5813, 5815, 5817, 5819, 5821, 5823, 5825, 5827, 5829, 5831, 5833, 5835, 5837, 5839, 5841, 5843, 5845, 5847, 5849, 5851, 5853, 5855, 5857, 5859, 5861, 5863, 5865, 5867, 5869, 5871, 5873, 5875, 5877, 5879, 5881, 5883, 5885, 5887, 5889, 5891, 5893, 5895, 5897, 5899, 5901, 5903, 5905, 5907, 5909, 5911, 5913, 5915, 5917, 5919, 5921, 5923, 5925, 5927, 5929, 5931, 5933, 5935, 5937, 5939, 5941, 5943, 5945, 5947, 5949, 5951, 5953, 5955, 5957, 5959, 5961, 5963, 5965, 5967, 5969, 5971, 5973, 5975, 5977, 5979, 5981, 5983, 5985, 5987, 5989, 5991, 5993, 5995, 5997, 5999, 6001, 6003, 6005, 6007, 6009, 6011, 6013, 6015, 6017, 6019, 6021, 6023, 6025, 6027, 6029, 6031, 6033, 6035, 6037, 6039, 6041, 6043, 6045, 6047, 6049, 6051, 6053, 6055, 6057, 6059, 6061, 6063, 6065, 6067, 6069, 6071, 6073, 6075, 6077, 6079, 6081, 6083, 6085, 6087, 6089, 6091, 6093, 6095, 6097, 6099, 6101, 6103, 6105, 6107, 6109, 6111, 6113, 6115, 6117, 6119, 6121, 6123, 6125, 6127, 6129, 6131, 6133, 6135, 6137, 6139, 6141, 6143, 6145, 6147, 6149, 6151, 6153, 6155, 6157, 6159, 6161, 6163, 6165, 6167, 6169, 6171, 6173, 6175, 6177, 6179, 6181, 6183, 6185, 6187, 6189, 6191, 6193, 6195, 6197, 6199, 6201, 6203, 6205, 6207, 6209, 6211, 6213, 6215, 6217, 6219, 6221, 6223, 6225, 6227, 6229, 6231, 6233, 6235, 6237, 6239, 6241, 6243, 6245, 6247, 6249, 6251, 6253, 6255, 6257, 6259, 6261, 6263, 6265, 6267, 6269, 6271, 6273, 6275, 6277, 6279, 6281, 6283, 6285, 6287, 6289, 6291, 6293, 6295, 6297, 6299, 6301, 6303, 6305, 6307, 6309, 6311, 6313, 6315, 6317, 6319, 6321, 6323, 6325, 6327, 6329, 6331, 6333, 6335, 6337, 6339, 6341, 6343, 6345, 6347, 6349, 6351, 6353, 6355, 6357, 6359, 6361, 6363, 6365, 6367, 6369, 6371, 6373, 6375, 6377, 6379, 6381, 6383, 6385, 6387, 6389, 6391, 6393, 6395, 6397, 6399, 6401, 6403, 6405, 6407, 6409, 6411, 6413, 6415, 6417, 6419, 6421, 6423, 6425, 6427, 6429, 6431, 6433, 6435, 6437, 6439, 6441, 6443, 6445, 6447, 6449, 6451, 6453, 6455, 6457, 6459, 6461, 6463, 6465, 6467, 6469, 6471, 6473, 6475, 6477, 6479, 6481, 6483, 6485, 6487, 6489, 6491, 6493, 6495, 6497, 6499, 6501, 6503, 6505, 6507, 6509, 6511, 6513, 6515, 6517, 6519, 6521, 6523, 6525, 6527, 6529, 6531, 6533, 6535, 6537, 6539, 6541, 6543, 6545, 6547, 6549, 6551, 6553, 6555, 6557, 6559, 6561, 6563, 6565, 6567, 6569, 6571, 6573, 6575, 6577, 6579, 6581, 6583, 6585, 6587, 6589, 6591, 6593, 6595, 6597, 6599, 6601, 6603, 6605, 6607, 6609, 6611, 6613, 6615, 6617, 6619, 6621, 6623, 6625, 6627, 6629, 6631, 6633, 6635, 6637, 6639, 6641, 6643, 6645, 6647, 6649, 6651, 6653, 6655, 6657, 6659, 6661, 6663, 6665, 6667, 6669, 6671, 6673, 6675, 6677, 6679, 6681, 6683, 6685, 6687, 6689, 6691, 6693, 6695, 6697, 6699, 6701, 6703, 6705, 6707, 6709, 6711, 6713, 6715, 6717, 6719, 6721, 6723, 6725, 6727, 6729, 6731, 6733, 6735, 6737, 6739, 6741, 6743, 6745, 6747, 6749, 6751, 6753, 6755, 6757, 6759, 6761, 6

COUNTY **LEA** FIELD **Scarborough** STATE **NM**  
 OPR **HUFF, JACK** API **30-025-27998**  
 NO **1** LEASE **Shearn State** MAP  
**Sec 32, T26S, R37E** COORD  
**544 FSL, 1980 FEL of Sec** **1-3-55 NM**  
**5 mi S/Bennett** SPD **10-31-82** CMP **1-10-83**

CSC  
**8 5/8-1250-300 sx**  
**4 1/2-3350-350 sx**

WELL CLASS: INIT D FIN SUS LSE. CODE			
FORMATION	DATUM	FORMATION	DATUM
TD 3350 (YTES)		PBD	

**SUSPENDED OPERATIONS**

CONTR OPRSELEV **2945 GL** sub-s

11-15-82 F.R. 11-1-82  
 11-22-82 PD 3200 RT (Yates)  
 1-10-83 Drlg 1000  
 1-15-83 TD 3350; WOCT  
 TD 3350; Suspended Operations  
 TEMPORARY COMPLETION ISSUED

1-3-55 NM  
 IC 30-025-70838-82

NEW MEXICO OIL CONSERVATION COMMISSION  
WELL LOCATION AND ACREAGE DEDICATION PLAT

Form O-1  
Supersedes O-128  
Effect 9-14-85

All distances must be from the outer boundaries of the Section

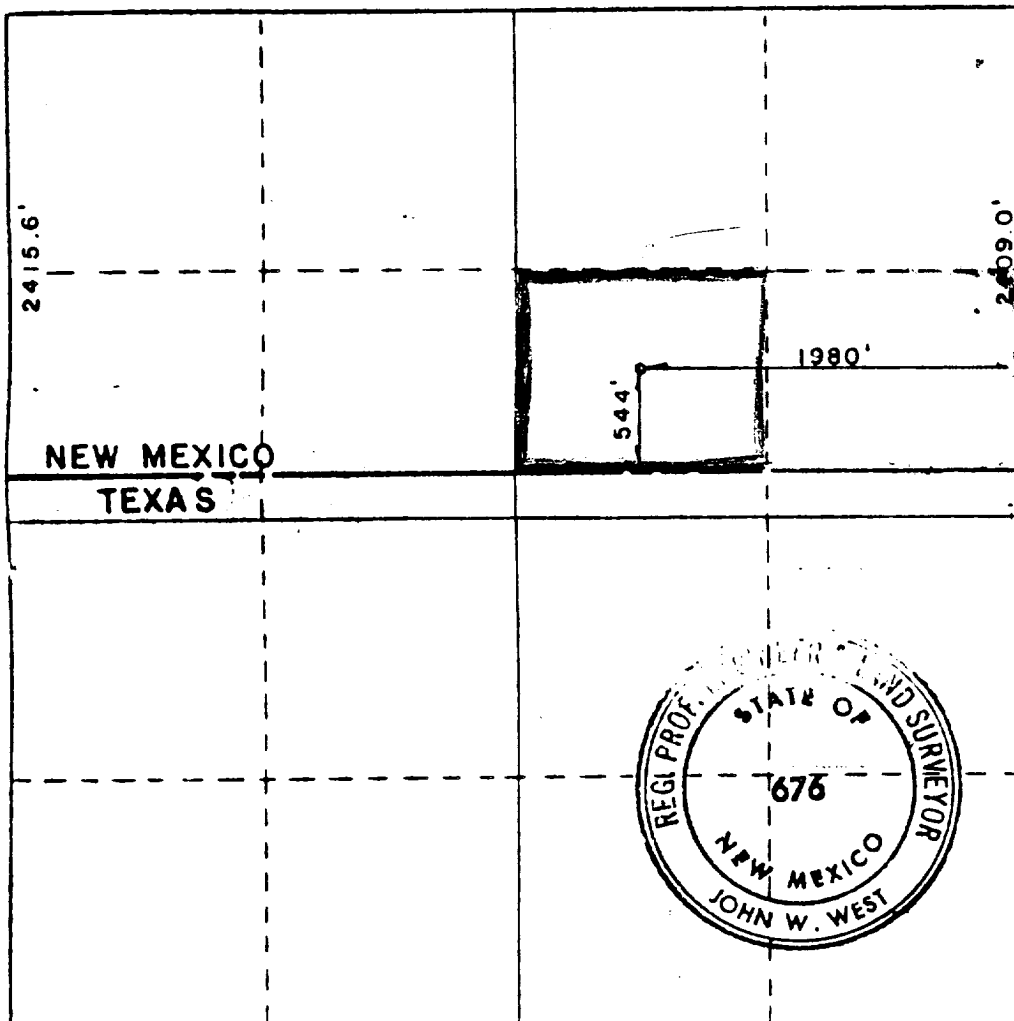
Operator <b>JACK HUFF,</b>		Lessee <b>SHERRIN STATE</b>		Well No. <b>1</b>
Unit Letter <b>G</b>	Section <b>32</b>	Township <b>26S</b>	Range <b>37E</b>	County <b>LEA</b>
Actual Footage Location of Well				
<b>544</b> feet from the <b>SOUTH</b> line and		<b>1980</b> feet from the <b>EAST</b> line		
Ground Level Elev. <b>2944.6</b>	Producing Formation <b>YATES 7-RIVERS</b>	Pool <b>SCARBOROUGH YATES 7-R</b>	Dedicated Acreage: <b>33.08</b> Acres	

1. Outline the acreage dedicated to the subject well by colored pencil or hatchure marks on the plat below.
2. If more than one lease is dedicated to the well, outline each and identify the ownership thereof (both as to working interest and royalty).
3. If more than one lease of different ownership is dedicated to the well, have the interests of all owners been consolidated by communitization, unitization, force-pooling, etc?

☐ Yes ☐ No If answer is "yes," type of consolidation \_\_\_\_\_

If answer is "no," list the owners and tract descriptions which have actually been consolidated. (Use reverse side of this form if necessary.) \_\_\_\_\_

No allowable will be assigned to the well until all interests have been consolidated (by communitization, unitization, forced-pooling, or otherwise) or until a non-standard unit, eliminating such interests, has been approved by the Commission.



CERTIFICATION

I hereby certify that the information contained herein is true and complete to the best of my knowledge and belief.

Name  
**CHRIS HUFF**  
Position  
**SUPERINTENDENT**  
Company  
**JACK HUFF**  
Date  
**MARCH 14, 1983**

I hereby certify that the well location shown on this plat was plotted from field notes of actual surveys made by me or under my supervision, and that the same is true and correct to the best of my knowledge and belief.

Date Surveyed  
**10/20/82**  
Registered Professional Engineer and/or Land Surveyor

*[Signature]*  
Certificate No.

RECEIVED  
JAN 16 1983  
O. G. S. L. L. L. E  
HOBBS OFFICE