

**NEW MEXICO OIL CONSERVATION COMMISSION  
WELL LOCATION AND ACREAGE DEDICATION PLAT**

Form C-102  
Supersedes C-128  
Effective 1-1-65

All distances must be from the outer boundaries of the Section.

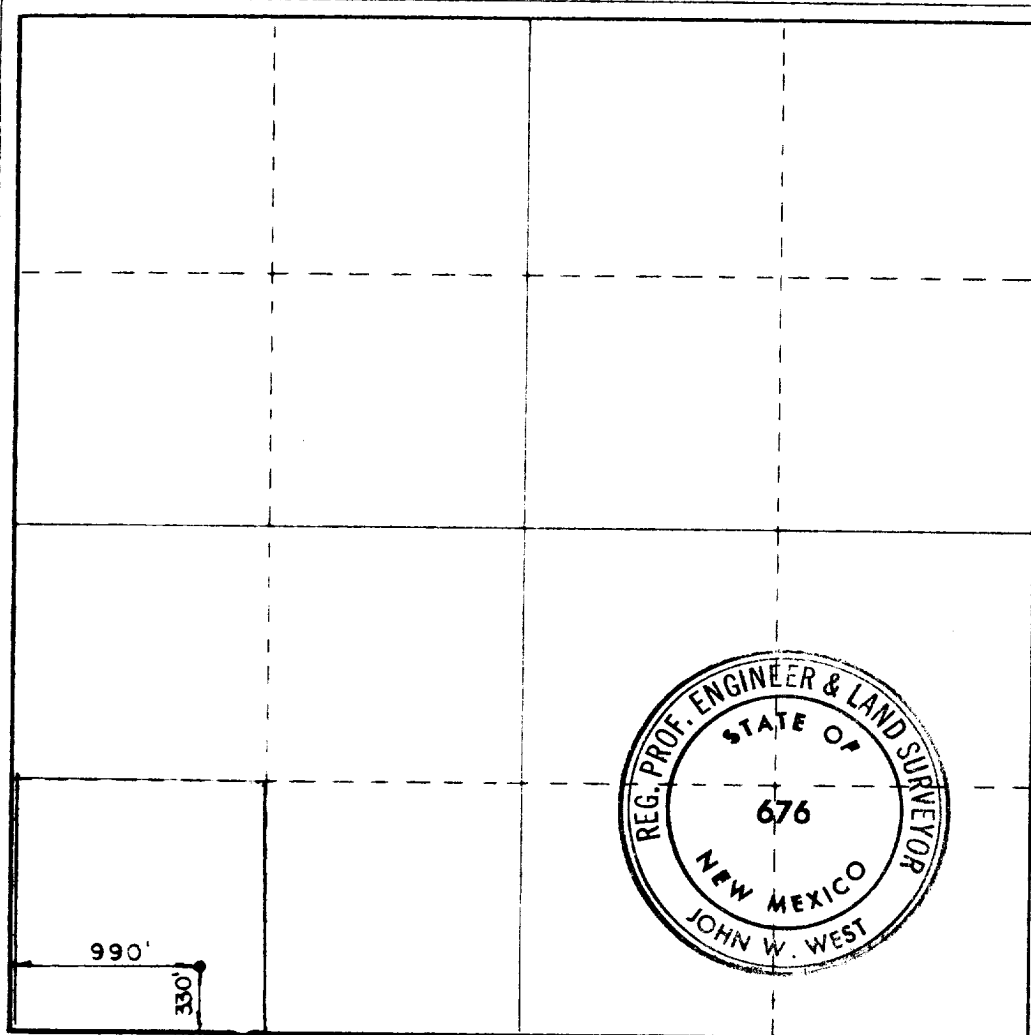
Operator <b>JAMES L. EVANS</b>			Lease <b>STEELER A</b>		Well No. <b>4</b>
Section Letter <b>M</b>	Section <b>20</b>	Township <b>23 SOUTH</b>	Range <b>37 EAST</b>	County <b>LEA</b>	
Actual Footage Location of Well:					
<b>330</b> feet from the <b>SOUTH</b> line and		<b>990</b> feet from the <b>WEST</b> line			
Ground Level Elev. <b>3312.8</b>	Producing Formation <b>Queen</b>	Pool <b>Langlie Mattix</b>		Dedicated Acreage: <b>40</b> Acres	

1. Outline the acreage dedicated to the subject well by colored pencil or hachure marks on the plat below.
2. If more than one lease is dedicated to the well, outline each and identify the ownership thereof (both as to working interest and royalty).
3. If more than one lease of different ownership is dedicated to the well, have the interests of all owners been consolidated by communitization, unitization, force-pooling, etc?

☐ Yes    ☐ No    If answer is "yes," type of consolidation \_\_\_\_\_

If answer is "no," list the owners and tract descriptions which have actually been consolidated. (Use reverse side of this form if necessary.) \_\_\_\_\_

No allowable will be assigned to the well until all interests have been consolidated (by communitization, unitization, forced-pooling, or otherwise) or until a non-standard unit, eliminating such interests, has been approved by the Commission.



**CERTIFICATION**

I hereby certify that the information contained herein is true and complete to the best of my knowledge and belief.

*James L. Evans*  
Name

Position

Company

Date

I hereby certify that the well location shown on this plat was plotted from field notes of actual surveys made by me or under my supervision, and that the same is true and correct to the best of my knowledge and belief.

Date Surveyed

**November 18, 1982**

Registered Professional Engineer  
and/or Land Surveyor

*John W. West*

Certificate No

**John W. West, N.M. #676**

RECEIVED  
NOV 22 1982  
FBI

COUNTY **LEA** FIELD **Langlie-Mattix** STATE **NM**  
 OPR **EVANS, JAMES L.** API **30-025-28044**  
 NO **4** LEASE **Steeler "A"** MAP  
**Sec 20, T23S, R37E** CO-ORD  
**330 FSL, 990 FWL of Sec** **1-5-57 NM**  
**11 mi S/Buckeye** SPD **12-6-82** CMP **1-8-83**

CSC.	WELL CLASS. INIT D FIN DO LSE. CODE			
	FORMATION	DATUM	FORMATION	DATUM
8 5/8-352-200 SX				
5 1/2-3680-850 SX				
2 3/8-3500				
	ID 3680 (QUEEN)		PBD 3640	

IP (Queen) Perfs 3512-3632 P 90 BOPD. Pot based on 24 hr test. GOR TSTM; gty 35

CONTR **Desert** OPRSELEV **3313 GL** sub-s

F.R. 11-29-82  
 PD 3700 RT (Queen)  
 12-14-82 TD 3680; WOCT  
 12-28-82 TD 3680; PBD 3640; Flwg  
 Perf (Queen) 3512-16, 3528-40, 3598-3608,  
 3614-18, 3626-32 w/1 SPF  
 Acid (3512-3632) 3000 gals  
 Frac (3512-3632) 40,000 gals + 40,000 gals  
 CO2 + 40,000# sd  
 1-24-83 TD 3680; PBD 3640; Complete  
 LOG TOPS: Rustler 1145, Salt 1250, Base  
 Salt 2560, Queen 3440  
 Rig Released 12-13-82  
 1-29-83 COMPLETION ISSUED

1-5-57 NM  
 IC 30-025-70922-82