

MEXICO OIL CONSERVATION COMMISS.
WELL LOCATION AND ACREAGE DEDICATION PLAT

Form C-102
 Supersedes C-128
 Effective 1-1-65

All distances must be from the outer boundaries of the Section

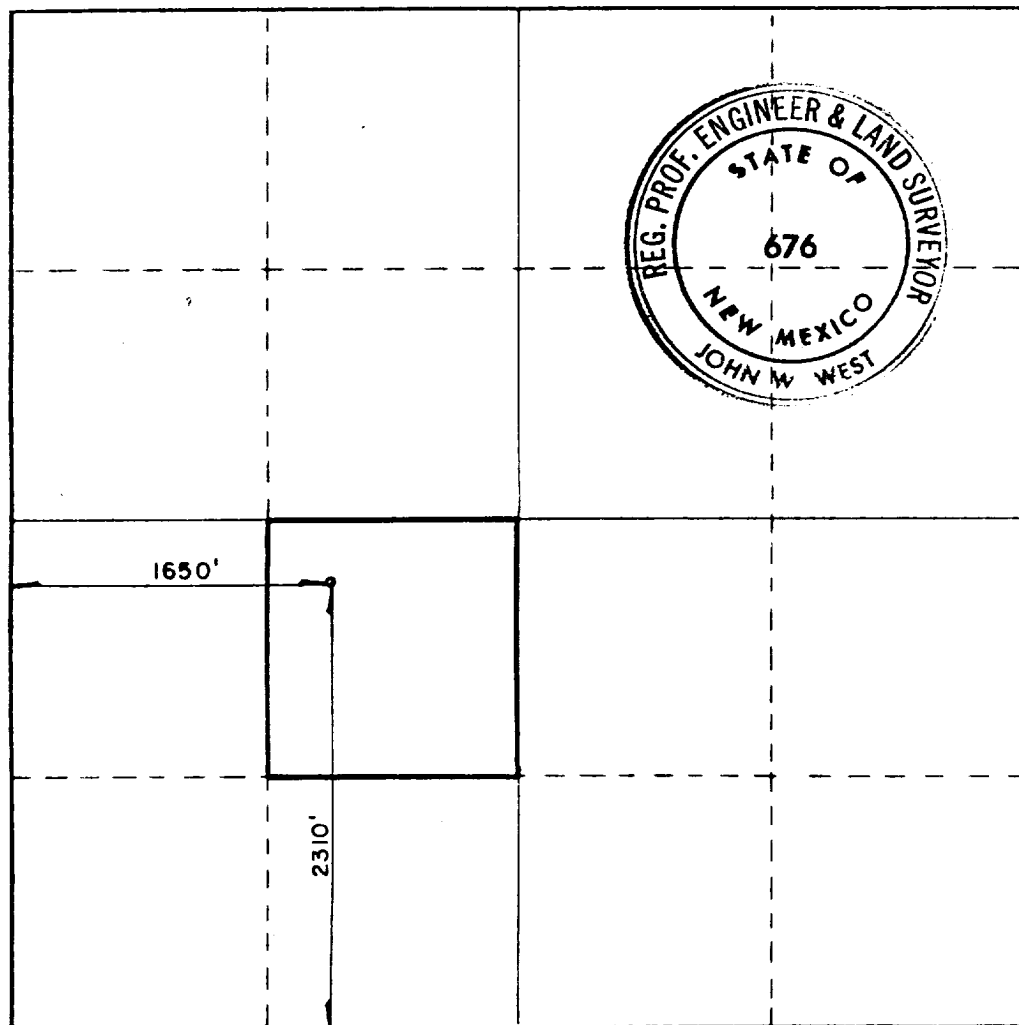
Operator JUBILEE ENERGY CORP.			Lease GRAHAM FED.		Well No. 1
Unit Letter K	Section 22	Township 24S	Range 32E	County LEA	
Actual Footage Location of Well: 1650 feet from the WEST line and 2310 feet from the SOUTH line					
Ground Level Elev. 3603.5	Producing Formation Delaware	Pool Double "X"		Dedicated Acreage: 40 Acres	

1. Outline the acreage dedicated to the subject well by colored pencil or hachure marks on the plat below.
2. If more than one lease is dedicated to the well, outline each and identify the ownership thereof (both as to working interest and royalty).
3. If more than one lease of different ownership is dedicated to the well, have the interests of all owners been consolidated by communitization, unitization, force-pooling, etc?

☐ Yes ☐ No If answer is "yes," type of consolidation _____

If answer is "no," list the owners and tract descriptions which have actually been consolidated. (Use reverse side of this form if necessary.) _____

No allowable will be assigned to the well until all interests have been consolidated (by communitization, unitization, forced-pooling, or otherwise) or until a non-standard unit, eliminating such interests, has been approved by the Commission.



CERTIFICATION

I hereby certify that the information contained herein is true and complete to the best of my knowledge and belief.

Name *James A. Knauf*
James A. Knauf

Position
Agent

Company
JUBILEE ENERGY CORP.

Date
December 4, 1982

I hereby certify that the well location shown on this plat was plotted from field notes of actual surveys made by me or under my supervision, and that the same is true and correct to the best of my knowledge and belief.

Date Surveyed
12/2/82

Registered Professional Engineer
 and/or Land Surveyor

John W. West
 Certificate No.
JOHN W. WEST N.M. #676

RECEIVED

DEC 14 1982

RECORDS OFFICE