

**NE EXICO OIL CONSERVATION COMMISSION  
WELL LOCATION AND ACREAGE DEDICATION PLAT**

Form C-102  
Supersedes C-128  
Effective 1-1-65

All distances must be from the outer boundaries of the Section.

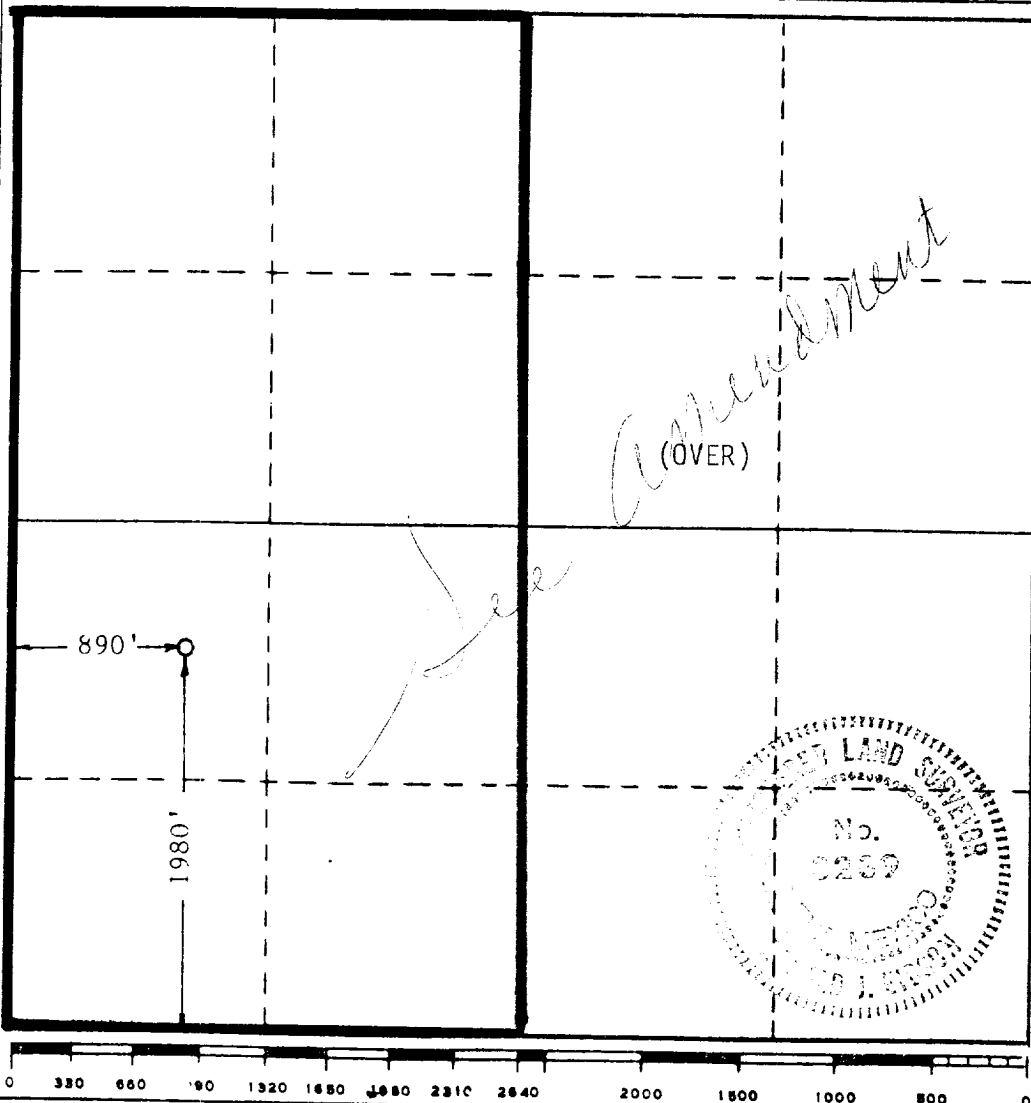
Operator <b>H.N.G. OIL COMPANY</b>			Lease <b>Marshall 29 Federal</b>		Well No. <b>1</b>
Unit Letter <b>L</b>	Section <b>29</b>	Township <b>24 South</b>	Range <b>34 East</b>	County <b>Lea</b>	
Actual Footage Location of Well: <div style="display: flex; justify-content: space-between;"> <span>1980 feet from the South line and</span> <span>890 feet from the West line</span> </div>					
Ground Level Elev. <b>3518.0'</b>	Producing Formation <b>Morrow</b>	Pool <b>Pitchfork Ranch</b>		Dedicated Acreage: <b>320</b> Acres	

1. Outline the acreage dedicated to the subject well by colored pencil or hachure marks on the plat below.
2. If more than one lease is dedicated to the well, outline each and identify the ownership thereof (both as to working interest and royalty).
3. If more than one lease of different ownership is dedicated to the well, have the interests of all owners been consolidated by communitization, unitization, force-pooling, etc?

☐ Yes    ☐ No    If answer is "yes," type of consolidation \_\_\_\_\_

If answer is "no," list the owners and tract descriptions which have actually been consolidated. (Use reverse side of this form if necessary.) \_\_\_\_\_

No allowable will be assigned to the well until all interests have been consolidated (by communitization, unitization, forced-pooling, or otherwise) or until a non-standard unit, eliminating such interests, has been approved by the Commission.



**CERTIFICATION**

*I hereby certify that the information contained herein is true and complete to the best of my knowledge and belief.*

*Betty Gildon*

Name  
**Betty Gildon**

Position  
**Regulatory Analyst**

Company  
**HNG OIL COMPANY**

Date  
**3/30/83**

*I hereby certify that the well location shown on this plat was plotted from field notes of actual surveys made by me or under my supervision, and that the same is true and correct to the best of my knowledge and belief.*

Date Surveyed  
**March 29, 1983**

Registered Professional Engineer  
and/or Land Surveyor

*Ronald J. Eldon*

Certificate No. **JOHN W. WEST 876**  
**PATRICK A. ROMERO 6663**  
**Ronald J. Eldon 3239**

WI - HNG Oil Company 59.837969  
Southland Royalty Co. 8.333333  
Amoco Production Co. 31.25  
Cyrene Maple .347240  
Cyrone Inman .115729  
Fred Luthy, Jr. .115729  
RI - U.S. Government 1/16