

NEW MEXICO OIL CONSERVATION COMMISSION
WELL LOCATION AND ACREAGE DEDICATION PLAT

Form C-102
Supersedes C-128
Effective 1-1-65

All distances must be from the outer boundaries of the Section

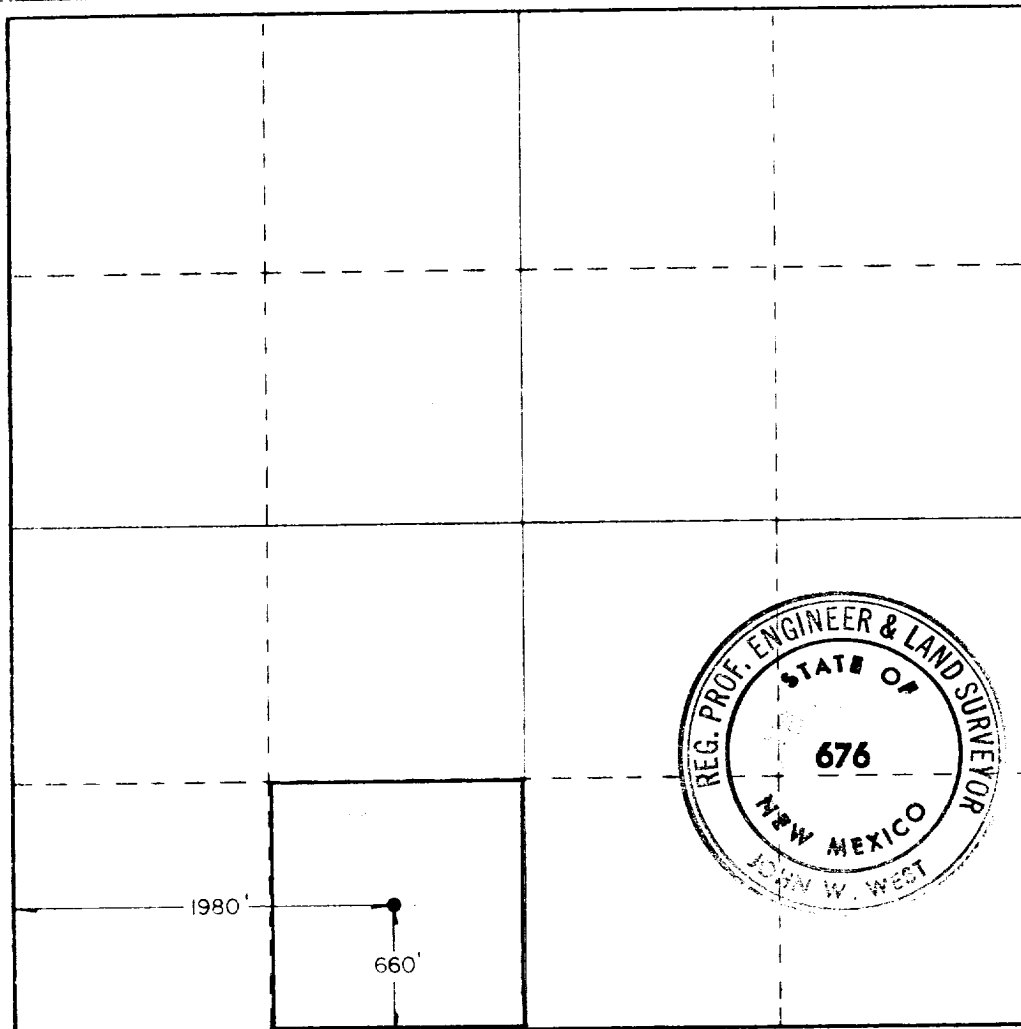
Operator Morris R. Antweil			Lease Gulf State			Well No. 1		
Section Letter N	Section 2	Township 23 South	Range 37 East	County Lea				
Actual Plotage Location of Well: 660 feet from the south line and 1980 feet from the west line								
Ground Level Elev. 3296.4'	Producing Formation Abo		Pool Undesignated			Dedicated Acreage 40 Acres		

- Outline the acreage dedicated to the subject well by colored pencil or hachure marks on the plat below.
- If more than one lease is dedicated to the well, outline each and identify the ownership thereof (both as to working interest and royalty).
- If more than one lease of different ownership is dedicated to the well, have the interests of all owners been consolidated by communitization, unitization, force-pooling, etc?

☐ Yes ☐ No If answer is "yes," type of consolidation _____

If answer is "no," list the owners and tract descriptions which have actually been consolidated. (Use reverse side of this form if necessary.) _____

No allowable will be assigned to the well until all interests have been consolidated (by communitization, unitization, forced-pooling, or otherwise) or until a non-standard unit, eliminating such interests, has been approved by the Commission.



CERTIFICATION

I hereby certify that the information contained herein is true and complete to the best of my knowledge and belief.

Jerry Hillard
Name

Jerry Hillard

Position

Agent

Company

Morris R. Antweil

Date

October 5, 1983

I hereby certify that the well location shown on this plat was plotted from field notes of actual surveys made by me or under my supervision, and that the same is true and correct to the best of my knowledge and belief.

Date Surveyed

July 28, 1983

Registered Professional Engineer and Land Surveyor

John W. West
Certificate No. JOHN W. WEST, 676
RONALD J. EIDSON, 3239

330 660 990 1320 1650 1980 2310 2640 2000 1800 1000 800 0

RECEIVED
OCT 6 1983
O.C.D.
HOBBS OFFICE

173