

UNITED STATES
DEPARTMENT OF THE INTERIOR
BUREAU OF LAND MANAGEMENT

SUBMIT IN 7 LIGATE*
(Other instructions on
reverse side)

Form approved.
Budget Bureau No. 1004-0136
Expires August 31, 1985

APPLICATION FOR PERMIT TO DRILL, DEEPEN, OR PLUG BACK

1a. TYPE OF WORK

DRILL ☐

DEEPEN ☐

PLUG BACK ☒

b. TYPE OF WELL

OIL
WELL ☐

GAS
WELL ☐

OTHER ☐

SINGLE
ZONE ☒

MULTIPLE
ZONE ☐

2. NAME OF OPERATOR

HNG OIL COMPANY

3. ADDRESS OF OPERATOR

P. O. Box 2267, Midland, Texas 79702

4. LOCATION OF WELL (Report location clearly and in accordance with any State requirements.)*

At surface

1980' FSL & 660' FWL

At proposed prod. zone

1980' FSL & 660' FWL

14. DISTANCE IN MILES AND DIRECTION FROM NEAREST TOWN OR POST OFFICE*

16 miles SW of Jal, NM

15. DISTANCE FROM PROPOSED*

LOCATION TO NEAREST
PROPERTY OR LEASE LINE, FT.
(Also to nearest drig. unit line, if any)

660'

16. NO. OF ACRES IN LEASE

320

17. NO. OF ACRES ASSIGNED
TO THIS WELL

320

18. DISTANCE FROM PROPOSED LOCATION*
TO NEAREST WELL, DRILLING, COMPLETED,
OR APPLIED FOR, ON THIS LEASE, FT.

None

19. PROPOSED DEPTH

13,755

20. ROTARY OR CABLE TOOLS

21. ELEVATIONS (Show whether DF, RT, GR, etc.)

3556' GR

22. APPROX. DATE WORK WILL START*

23.

PROPOSED CASING AND CEMENTING PROGRAM

SIZE OF HOLE	SIZE OF CASING	WEIGHT PER FOOT	SETTING DEPTH	QUANTITY OF CEMENT
17-1/2"	13-3/8"	61#	600'	600 sacks circulated
12-1/4"	9-5/8"	40 & 36#	5087'	2375 sacks circulated
8-3/4"	7"	26#	13420'	1150 sacks
6-1/2"	5-1/2" Liner	20#	15000'	TOL: 13060' - 200 sacks
5-3/4"	3-1/2" Liner	10.3#	14973'	TOL: 14036' - 140 sacks

Plug-back procedure from Morrow to Wolfcamp attached.

Acreage is dedicated.

IN ABOVE SPACE DESCRIBE PROPOSED PROGRAM: If proposal is to deepen or plug back, give data on present productive zone and proposed new productive zone. If proposal is to drill or deepen directionally, give pertinent data on subsurface locations and measured and true vertical depths. Give blowout preventer program, if any.

24.

SIGNER

Betty Gildon

Betty Gildon

TITLE

Regulatory Analyst

DATE

9/11/86

(This space for Federal or State office use)

PERMIT NO.

APPROVAL DATE

APPROVED BY

TITLE

DATE

9-30-86

CONDITIONS OF APPROVAL, IF ANY:

*See Instructions On Reverse Side

Title 18 U.S.C. Section 1001, makes it a crime for any person knowingly and willfully to make to any department or agency of the United States any false, fictitious or fraudulent statements or representations as to any matter within its jurisdiction.

RECEIVED

OCT 1 1986

C.S.C.
HOBBS OFFICE

HNG OIL COMPANY
Workover Procedure
Madera Ridge 25 Federal Com., Well No. 1
Sec. 25, T24S, R33E, Lea County, New Mexico

Existing Perfs: 14,644' - 14,682' (~~Morrow~~) *atek a*

1. Set 5-1/2" 20# CIBP at 13,795' and dump 35' of cement on top.
2. Set a 5-1/2" 20# Guiberson Uni V Packer at 13,420'⁺
3. Perforate the Wolfcamp 12,528' to 13,550" (12 holes 1 shot/2 feet).
4. Acidize with 4000 gallons 15% Spearhead acid, and flow to test.

RECEIVED
OCT 1 1986
G. D.
HOBBS OFFICE

NEW MEXICO OIL CONSERVATION COMMISSION
 LOCATION AND ACREAGE DEDICATION PLAT

Form C-102
 Supersedes C-128
 Effective 1-1-65

All distances must be from the outer boundaries of the Section

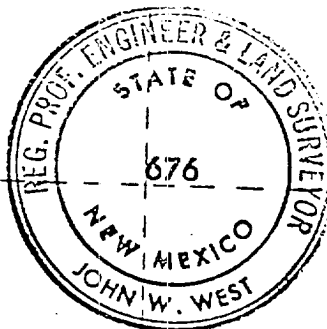
Operator HNG OIL COMPANY			Lease MADERA RIDGE 25 FED. COM.		Well No. 1
Unit Letter L	Section 25	Township 24 SOUTH	Range 33 EAST	County LEA	
Actual Footage Location of Well: 1980 feet from the SOUTH line and 660 feet from the WEST line Ground Level Elev. 3556.0 Producing Formation Wolfcamp Pool Pitchfork Ranch, West Dedicated Acreage: West 320 Acres					

1. Outline the acreage dedicated to the subject well by colored pencil or hatchure marks on the plat below.
2. If more than one lease is dedicated to the well, outline each and identify the ownership thereof (both as to working interest and royalty).
3. If more than one lease of different ownership is dedicated to the well, have the interests of all owners been consolidated by communitization, unitization, force-pooling, etc?
☒ Yes ☐ No If answer is "yes," type of consolidation Communitization

If answer is "no," list the owners and tract descriptions which have actually been consolidated. (Use reverse side of this form if necessary.)

No allowable will be assigned to the well until all interests have been consolidated (by communitization, unitization, forced-pooling, or otherwise) or until a non-standard unit, eliminating such interests, has been approved by the Commission.

NM 19858 Ed M. Smyth .25 ORR A. G. Andrikopoulos 4.75 ORR HNG 50% WI Southland Roy. 50% WI USA 1/8 Royalty	NM 21508 Ronald H. Hatch 5% ORR HNG 50% WI Southland Roy. 50% WI USA 1/8 Royalty
--	--



CERTIFICATION

I hereby certify that the information contained herein is true and complete to the best of my knowledge and belief.

Betty Gildon

Name
Betty Gildon
 Position
Regulatory Analyst
 Company
HNG OIL COMPANY

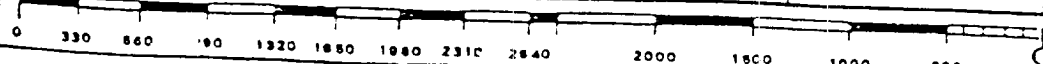
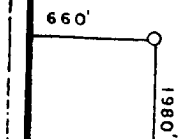
Date
9/11/86

I hereby certify that the well location shown on this plat was plotted from field notes of actual surveys made by me or under my supervision, and that the same is true and correct to the best of my knowledge and belief.

Date Surveyed
NOVEMBER 4, 1983
 Registered Professional Engineer
 and/or Land Surveyor

John W. West

Certificate No **JOHN W. WEST, 676**
RONALD J. EIDSON, 3239



RECEIVED
OCT 1 1986
G. C. C.
HOBBS OFFICE