

# WRS COMPLETION REPORT

COMPLETIONS  
PI# 30-T-0019 10/13/86 SEC 25 TWP 24S RGE 33E  
30-025-28533-0001 PAGE 1

NMEX LEA \* 1980FSL 660FWL SEC NW SW  
STATE COUNTY FOOTAGE  
HNG OIL  
OPERATOR 1  
WELL NO. 3556GR  
OPER ELEV

MADERA RIDGE "25" FEDERAL COM  
LEASE NAME

PITCHFORK RANCH W  
FIELD/POOL AREA

API 30-025-28533-0001  
PERMIT OR WELL I.D. NO.

09/08/1986 09/15/1986 LEASE TYPE/NO.  
SPUD DATE COMP. DATE  
13742 WOLFCAMP NOT RPTD  
PROJ. DEPTH PROJ. FORM CONTRACTOR  
DTD 15750

DRILLERS T.D. LOG T.D. PB 13742 OTD 15750 FM/TD MORROW  
PLUG BACK TO OLD T.D. FORM T.D.  
LOCATION DESCRIPTION

28 MI SE HALFWAY, NM

## TUBING DATA

TBG 2 7/8 AT 13420

## INITIAL POTENTIAL

IPF 2500.0MCFD  
WOLFCAMP PERF  
PERF 13528-13580 16/64CK 24HRS  
TP 8200 13528-13580 002

NO TRIMNT RPTD 13528-13580  
FCP PKR

GOR NR, GTY NR

## PRODUCTION TEST DATA

ATOKA PERF  
BRPG 14664-14682 14664-14682 001  
DEPTH 13742

## DRILLING PROGRESS DETAILS

HNG OIL  
BOX 2267  
MIDLAND, TX 79702  
915-686-3600  
OWWO: OLD INFO: FORMERLY HNG OIL 1 MADERA  
RIDGE "25" FEDERAL COM. ELEV 3556 GR. SPUD

Copyrighted  
Reproduction  
Prohibited



CONTINUED IC# 300257028586  
Petroleum Information  
CORPORATION

PI-WRS-GET  
Form No 187

COMPLETIONS  
PI# 30-T-0019 10/13/86 SEC 25 TWP 24S RGE 33E  
30-025-28533-0001 PAGE 2

HNG OIL  
1

MADERA RIDGE "25" FEDERAL COM

WSX WSD .

DRILLING PROGRESS DETAILS

12/27/83. 13 3/8 @ 600 W/600 SX, 9 5/8 @ 5087  
W/2375 SX, 7 @ 13,420 W/1150 SX, 5 1/2 LNR @  
13060-15000 W/200 SX, 3 1/2 LNR @ 14036-14973  
W/140 SX. LOG TOPS: STRAWN 13858, ATOKA 14042,  
MORROW CLASTICS 14742. OTD 15750. PB 14908.  
COMP 1/5/85. IPCAOF 12673 MCFGPD. PROD ZONE:  
ATOKA 14664-14682.  
10/06 LOC/1986/  
10/06 15750 TD, PB 13742  
COMP 9/15/86, IPF 2500 MCFGPD THRU 16/64  
CK, GOR NOT RPTD, GTY NOT  
RPTD, FTP 8200, FCP PKR  
10/06 PROD ZONE - WOLFCAMP 13528-13580  
FIRST REPORT & COMPLETION  
WOLFCAMP DISCOVERY-SHALLOWER POOL  
FIELD SUGGESTED PITCHFORK RANCH WEST

# NEW MEXICO CONSERVATION COMMISSION LOCATION AND ACREAGE DEDICATION PLAT

Form C-102  
 Supersedes C-12  
 Effective 1-1-65

All distances must be from the outer boundaries of the Section.

Operator <b>HNG OIL COMPANY</b>				Lease <b>MADERA RIDGE 25 FED. COM.</b>		Well No. <b>1</b>	
Unit Letter <b>L</b>	Section <b>25</b>	Township <b>24 SOUTH</b>	Range <b>33 EAST</b>		County <b>LEA</b>		

Actual Footage Location of Well: <b>1980</b> feet from the <b>SOUTH</b> line and <b>660</b> feet from the <b>WEST</b> line			
Ground Level Elev. <b>3556.0</b>	Producing Formation <b>Wolfcamp</b>	Pool <b>Pitchfork Ranch, West</b>	Dedicated Acreage: <b>West 320</b> Acres

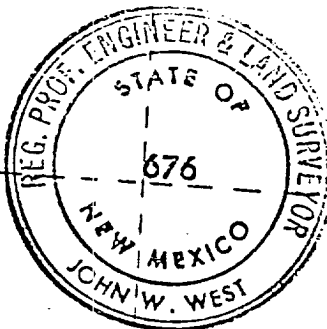
1. Outline the acreage dedicated to the subject well by colored pencil or hatchure marks on the plat below.
2. If more than one lease is dedicated to the well, outline each and identify the ownership thereof (both as to working interest and royalty).
3. If more than one lease of different ownership is dedicated to the well, have the interests of all owners been consolidated by communitization, unitization, force-pooling, etc?

☒ Yes ☐ No If answer is "yes," type of consolidation Communitization

If answer is "no," list the owners and tract descriptions which have actually been consolidated. (Use reverse side of this form if necessary.)

No allowable will be assigned to the well until all interests have been consolidated (by communitization, unitization, forced-pooling, or otherwise) or until a non-standard unit, eliminating such interests, has been approved by the Commission.

NM 19858 Ed M. Smyth .25 ORR A. G. Andrikopoulos 4.75 ORR HNG 50% WI Southland Roy. 50% WI USA 1/8 Royalty	INM 21508 Ronald H. Hatch 15% ORR HNG 50% WI Southland Roy. 50% WI USA 1/8 Royalty
--	--



## CERTIFICATION

I hereby certify that the information contained herein is true and complete to the best of my knowledge and belief.

*Betty Gildon*

Name  
**Betty Gildon**

Position  
**Regulatory Analyst**

Company  
**HNG OIL COMPANY**

Date  
**9/11/86**

I hereby certify that the well location shown on this plat was plotted from field notes of actual surveys made by me or under my supervision, and that the same is true and correct to the best of my knowledge and belief.

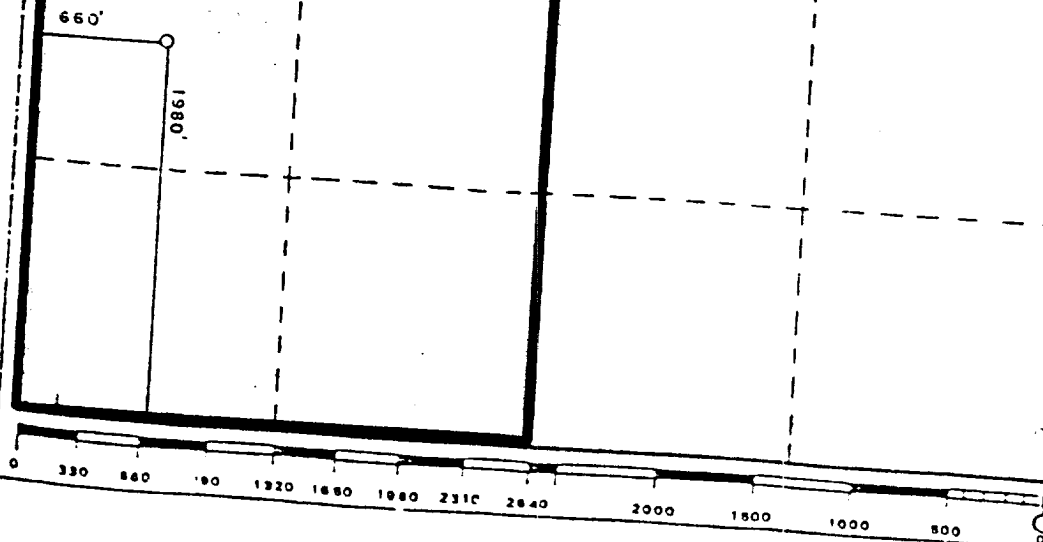
Date Surveyed

**NOVEMBER 4, 1983**

Registered Professional Engineer and/or Land Surveyor

*John W. West*

Certificate No. **JOHN W. WEST, 676**  
**RONALD J. EIDSON, 3239**



RECEIVED  
OCT 3 1986  
O.C.D.  
HOBBS OFFICE

NEW MEXICO OIL CONSERVATION COMMISSION  
WELL LOCATION AND ACREAGE DEDICATION PLAT

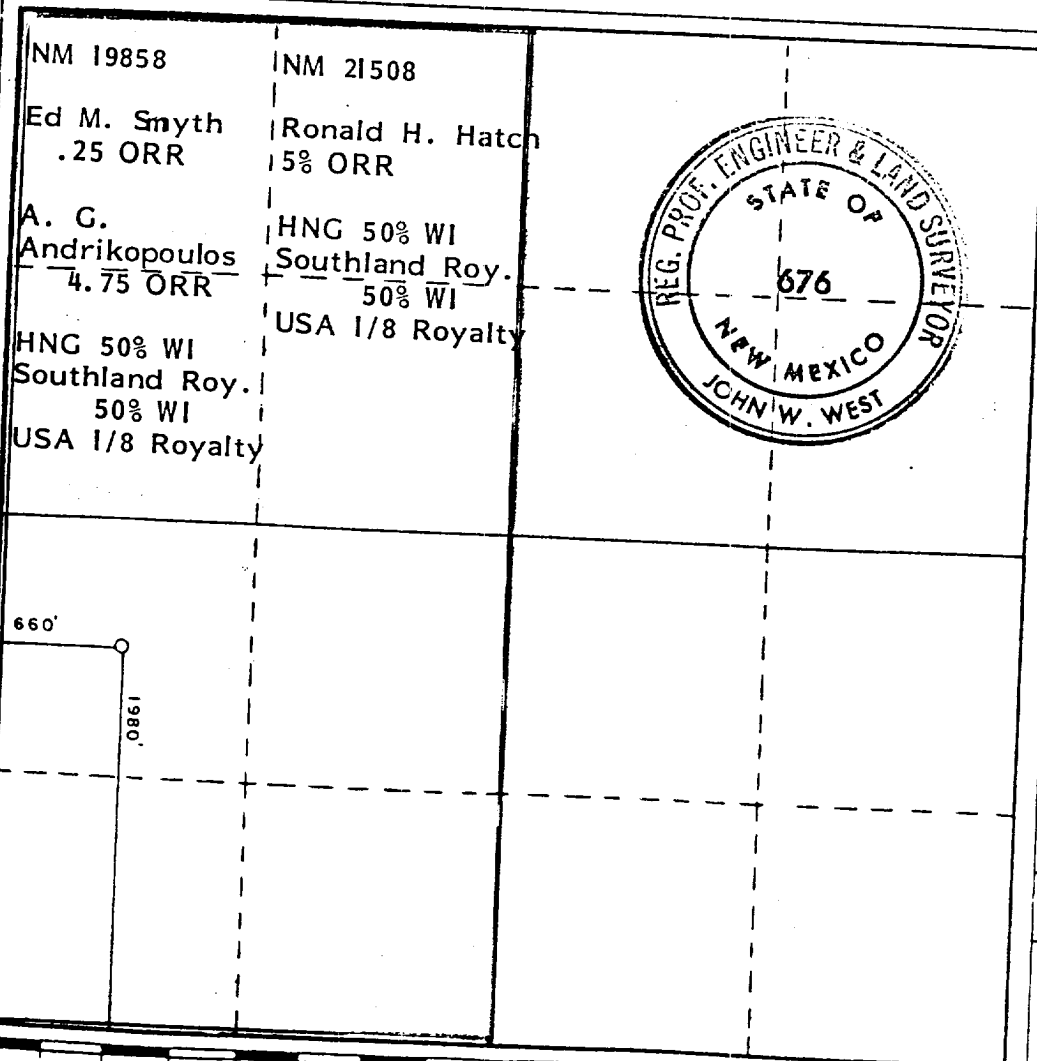
Form C-102  
Supersedes C-128  
Effective 1-1-65

All distances must be from the outer boundaries of the Section.

Operator <b>HNG OIL COMPANY</b>				Lease <b>MADERA RIDGE 25 FED. COM.</b>		Well No. <b>1</b>
Unit Letter <b>L</b>	Section <b>25</b>	Township <b>24 SOUTH</b>	Range <b>33 EAST</b>	Country <b>LEA</b>		
Actual Footage Location of Well: <b>1980</b> feet from the <b>SOUTH</b> line and <b>660</b> feet from the <b>WEST</b> line						
Ground Level Elev. <b>3556.0</b>	Producing Formation <b>Atoka</b>		Pool <b>Pitchfork Ranch, West</b>	Dedicated Acreage: <b>320</b> Acres		

1. Outline the acreage dedicated to the subject well by colored pencil or hatchure marks on the plat below.
2. If more than one lease is dedicated to the well, outline each and identify the ownership thereof (both as to working interest and royalty).
3. If more than one lease of different ownership is dedicated to the well, have the interests of all owners been consolidated by communitization, unitization, force-pooling, etc?  
☒ Yes   ☐ No   If answer is "yes," type of consolidation Communitization

If answer is "no," list the owners and tract descriptions which have actually been consolidated. (Use reverse side of this form if necessary.)  
 No allowable will be assigned to the well until all interests have been consolidated (by communitization, unitization, forced-pooling, or otherwise) or until a non-standard unit, eliminating such interests, has been approved by the Commission.



CERTIFICATION

I hereby certify that the information contained herein is true and complete to the best of my knowledge and belief.

*Betty Gildon*

Name  
**Betty Gildon**

Position  
**Regulatory Analyst**

Company  
**HNG OIL COMPANY**

Date  
**8/1/84**

I hereby certify that the well location shown on this plat was plotted from field notes of actual surveys made by me or under my supervision, and that the same is true and correct to the best of my knowledge and belief.

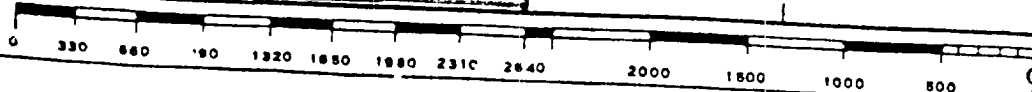
Date Surveyed

**NOVEMBER 4, 1983**

Registered Professional Engineer and/or Land Surveyor

*John W. West*

Certificate No. **JOHN W. WEST, 676**  
**RONALD J. EIDSON, 3239**



RECEIVED

AUG - 3 1984

O C S.  
HONORABLE OFFICE

NEW MEXICO OIL CONSERVATION COMMISSION  
WELL LOCATION AND ACREAGE DEDICATION PLAT

Form C-102  
Supersedes C-128  
Effective 1-1-65

All distances must be from the outer boundaries of the Section.

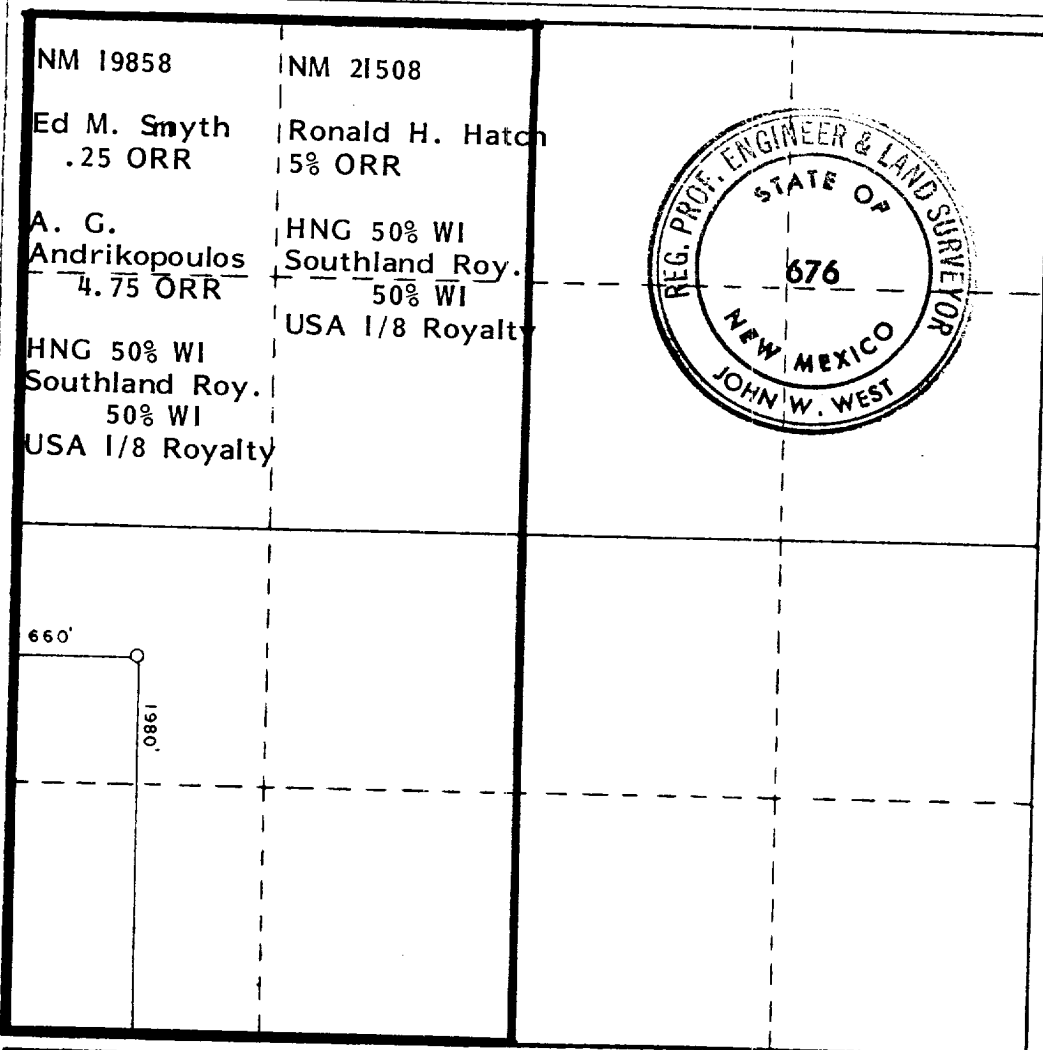
Operator <b>HNG OIL COMPANY</b>			Lease <b>MADERA RIDGE 25 FED. COM.</b>		Well No. <b>1</b>
Unit Letter <b>L</b>	Section <b>25</b>	Township <b>24 SOUTH</b>	Range <b>33 EAST</b>	County <b>LEA</b>	
Actual Footage Location of Well:					
<b>1980</b>		feet from the <b>SOUTH</b>	line and	<b>660</b>	feet from the <b>WEST</b> line
Ground Level Elev. <b>3556.0</b>	Producing Formation <b>Morrow</b>		Pool <b>Pitchfork Ranch</b>		Dedicated Acreage: <b>320</b> Acres

1. Outline the acreage dedicated to the subject well by colored pencil or hatchure marks on the plat below.
2. If more than one lease is dedicated to the well, outline each and identify the ownership thereof (both as to working interest and royalty).
3. If more than one lease of different ownership is dedicated to the well, have the interests of all owners been consolidated by communitization, unitization, force-pooling, etc?

☒ Yes ☐ No If answer is "yes," type of consolidation Communitization

If answer is "no," list the owners and tract descriptions which have actually been consolidated. (Use reverse side of this form if necessary.)

No allowable will be assigned to the well until all interests have been consolidated (by communitization, unitization, forced-pooling, or otherwise) or until a non-standard unit, eliminating such interests, has been approved by the Commission.



CERTIFICATION

I hereby certify that the information contained herein is true and complete to the best of my knowledge and belief.

*Betty Gildon*

Name  
**Betty Gildon**

Position  
**Regulatory Analyst**

Company  
**HNG OIL COMPANY**

Date  
**November 30, 1983**

I hereby certify that the well location shown on this plat was plotted from field notes of actual surveys made by me or under my supervision, and that the same is true and correct to the best of my knowledge and belief.

Date Surveyed

**NOVEMBER 4, 1983**

Registered Professional Engineer and/or Land Surveyor

*John W. West*

Certificate No. **JOHN W. WEST, 676**  
**RONALD J. EIDSON, 3239**

0 330 660 990 1320 1650 1980 2310 2640 2970 3300 3630 3960 4290 4620 4950 5280 5610 5940 6270 6600