

**MEXICO OIL CONSERVATION COMMISSION
WELL LOCATION AND ACREAGE DEDICATION PLAT**

Form D-102
Supersedes C-128
Effective 1-1-65

All distances must be from the outer boundaries of the Section.

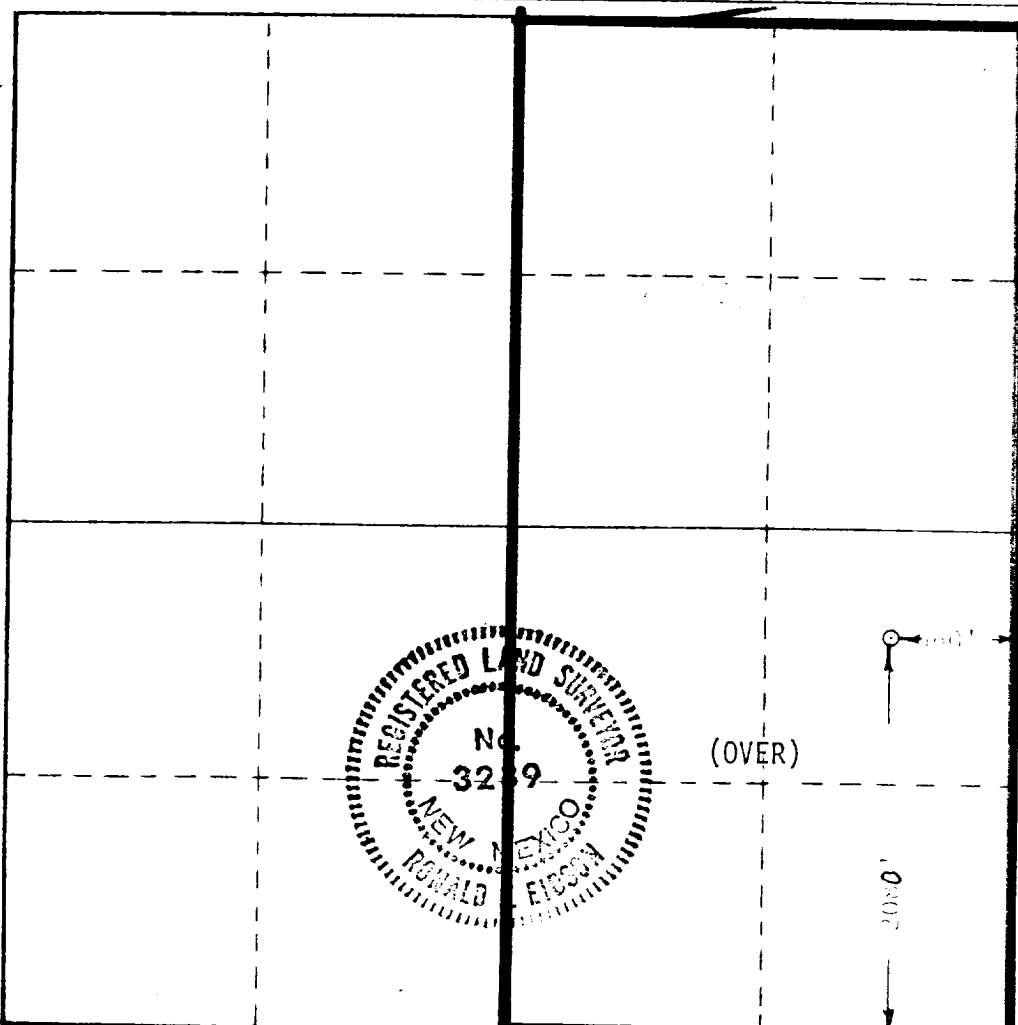
Operator HNG Oil Company			Lease Dillon 31		Well No. 1
Unit Letter I	Section 31	Township 24 South	Range 34 East	County Lea	
Actual Footage Location of Well: 2080 feet from the South line and 660 feet from the East line					
Ground Level Elev. 3442.2	Producing Formation Morrow		Pool Pitchfork Ranch		Dedicated Acreage: 320 Acres

1. Outline the acreage dedicated to the subject well by colored pencil or hatchure marks on the plat below.
2. If more than one lease is dedicated to the well, outline each and identify the ownership thereof (both as to working interest and royalty).
3. If more than one lease of different ownership is dedicated to the well, have the interests of all owners been consolidated by communitization, unitization, force-pooling, etc?

☐ Yes ☐ No If answer is "yes," type of consolidation _____

If answer is "no," list the owners and tract descriptions which have actually been consolidated. (Use reverse side of this form if necessary.) _____

No allowable will be assigned to the well until all interests have been consolidated (by communitization, unitization, forced-pooling, or otherwise) or until a non-standard unit, eliminating such interests, has been approved by the Commission.



CERTIFICATION

I hereby certify that the information contained herein is true and complete to the best of my knowledge and belief.

Betty Gildon

Name

Betty Gildon

Position

Regulatory Analyst

Company

HNG OIL COMPANY

Date

April 11, 1984

I hereby certify that the well location shown on this plat was plotted from field notes of actual surveys made by me or under my supervision, and that the same is true and correct to the best of my knowledge and belief.

Date Surveyed

March 12, 1984

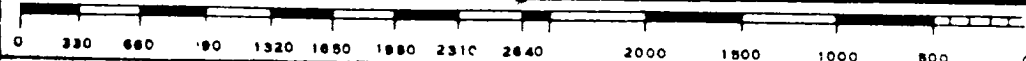
Registered Professional Engineer and/or Land Surveyor

Ronald J. Eidson

Certificate No. **JOHN W. WEST**

676

Ronald J. Eidson 3239



WORKING INTEREST:

HNG OIL COMPANY -	.58228328
Southland Royalty Company -	.08333333
Amoco Production Company -	.31250000
Cyrene Mapel -	.00347240
Cyrene Inman -	.00115729
Fred Luthy, Jr. -	.00115729
Roden Exploration Company -	.00188125
Roden Associates, Ltd. -	.00037625
W. F. Roden -	.00056437
Roden Participants, Ltd. -	.00188125

RECEIVED

1964 JUN 10

1964 JUN 10