

**NEW MEXICO OIL CONSERVATION COMMISSION
WELL LOCATION AND ACREAGE DEDICATION PLAT**

Form C-102
Supersedes C-128
Effective 1-4-65

All distances must be from the outer boundaries of the Section.

Operator <i>Gulf Oil Corp.</i>			Lease <i>Willcox "O" Acre</i>		Well No. <i>1</i>
Unit Letter <i>E</i>	Section <i>24</i>	Township <i>36S</i>	Range <i>34E</i>	County <i>La</i>	
Actual Footage Location of Well: <i>No.</i> feet from the <i>1600</i> line and <i>160</i> feet from the <i>4050</i> line					
Ground Level Elev. <i>3320</i>	Producing Formation <i>Permian</i>		Pool <i>Willcox</i>	Dedicated Acreage: <i>4.6</i>	Acres

1. Outline the acreage dedicated to the subject well by colored pencil or hatchure marks on the plat below.
2. If more than one lease is dedicated to the well, outline each and identify the ownership thereof (both as to working interest and royalty).
3. If more than one lease of different ownership is dedicated to the well, have the interests of all owners been consolidated by communitization, unitization, force-pooling, etc?

☐ Yes ☐ No If answer is "yes," type of consolidation _____

If answer is "no," list the owners and tract descriptions which have actually been consolidated. (Use reverse side of this form if necessary.) _____

No allowable will be assigned to the well until all interests have been consolidated (by communitization, unitization, forced-pooling, or otherwise) or until a non-standard unit, eliminating such interests, has been approved by the Commission.

CERTIFICATION

I hereby certify that the information contained herein is true and complete to the best of my knowledge and belief.

James H. Howard
Name

for R.D. PITRE
Position

SEPTA ENGINEER

Company
GULF OIL CORP

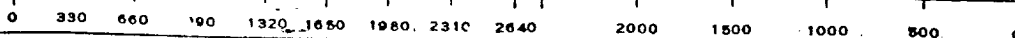
Date
12-7-84

I hereby certify that the well location shown on this plat was plotted from field notes of actual surveys made by me or under my supervision, and that the same is true and correct to the best of my knowledge and belief.

Date Surveyed

Registered Professional Engineer and/or Land Surveyor

Certificate No.



NEW MEXICO OIL CONSERVATION COMMISSION
WELL LOCATION AND ACREAGE DEDICATION PLAT

Form O-102
Supersedes O-128
Effective 1-1-65

All distances must be from the outer boundaries of the Section

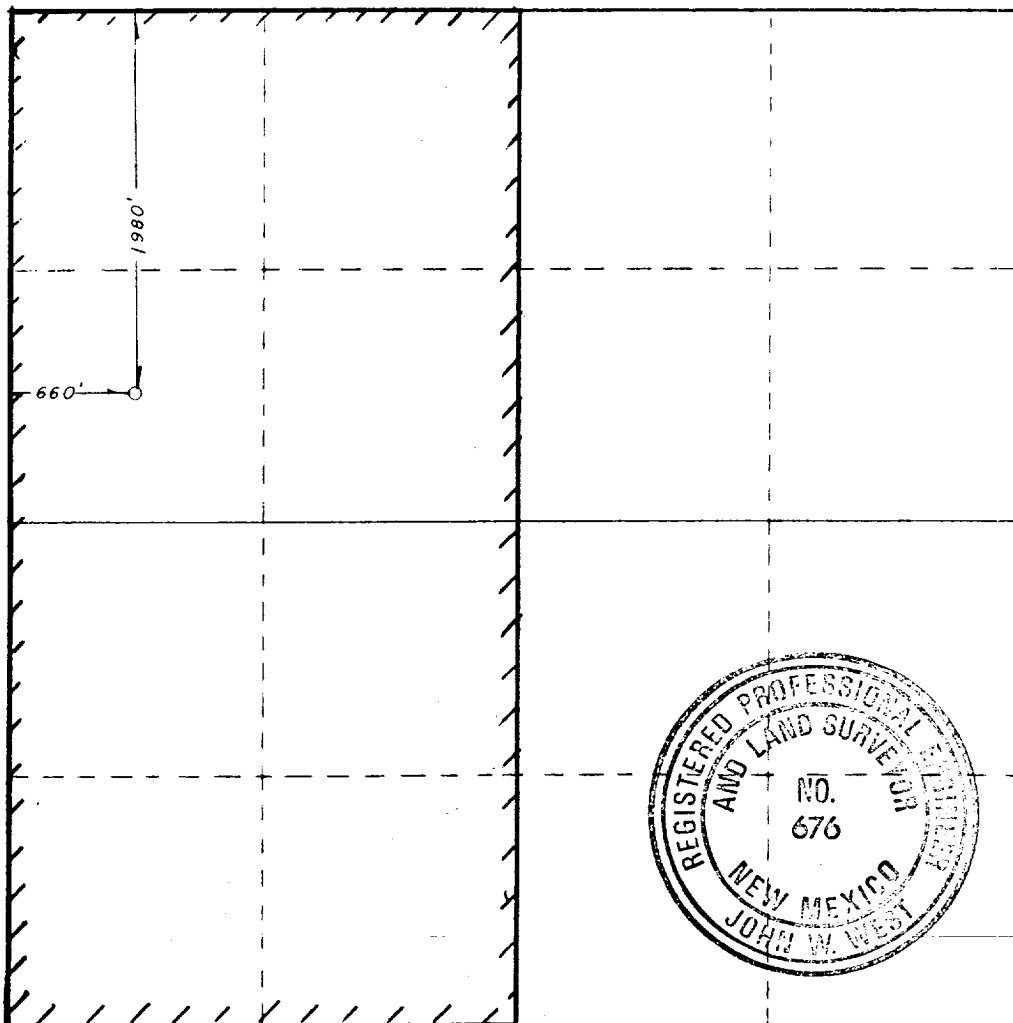
Lessor GULF OIL CORP.		Lessee WILSON "C" FEDERAL		Acres 1
Section Letter E	Section 29	Township 26S	Range 34E	County LEA
Approximate Location of Well:				
1980 feet from the NORTH line and		660 feet from the WEST line		
Ground Level Elev. 3356.6	Producing Formation ATOKA	Pool ATOKA	Estimated Acreage 320	

- Outline the acreage dedicated to the subject well by colored pencil or hachure marks on the plat below.
- If more than one lease is dedicated to the well, outline each and identify the ownership thereof (both as to working interest and royalty).
- If more than one lease of different ownership is dedicated to the well, have the interests of all owners been consolidated by communitization, unitization, force-pooling, etc?

☐ Yes ☒ No If answer is "yes," type of consolidation _____

If answer is "no," list the owners and tract descriptions which have actually been consolidated. (Use reverse side of this form if necessary.) _____

No allowable will be assigned to the well until all interests have been consolidated (by communitization, unitization, forced-pooling, or otherwise) or until a non-standard unit, eliminating such interests, has been approved by the Commission.



CERTIFICATION

I hereby certify that the information contained herein is true and complete to the best of my knowledge and belief.

John W. West

AREA PROD. MGR.

GULF OIL CORP.

I hereby certify that the well location shown on this plat was plotted from field notes of actual surveys made by me or under my supervision, and that the same is true and correct to the best of my knowledge and belief.

Date Surveyed

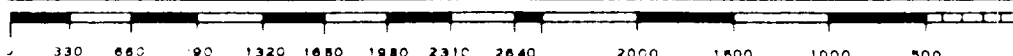
3/15/84

Registered Professional Engineer and Surveyor

John W. West

Certificate No. JOHN W. WEST, 676

RONALD J. EIDSON, 3239



ELF

RECEIVED
MAR 23 1984
O.C.D.
HOBBY OFFICE