

N. M. OIL COMMISSION
P. O. BOX 1380
HOBBS, NEW MEXICO 88240
DEPARTMENT OF THE INTERIOR
GEOLOGICAL SURVEY

SUBMIT IN TRIPLICATE*
(Other instructions on reverse side)

Form approved.
Budget Bureau No. 42-R1425.

30-025-28654

APPLICATION FOR PERMIT TO DRILL, DEEPEN, OR PLUG BACK

1a. TYPE OF WORK
 DRILL DEEPEN PLUG BACK

b. TYPE OF WELL
 OIL WELL GAS WELL OTHER

2. NAME OF OPERATOR
 JUBILEE ENERGY CORPORATION (Tom Garber)
 (915-686-0431)

3. ADDRESS OF OPERATOR
 3100 North A Street, Suite E-103, Midland, Texas 79701

4. LOCATION OF WELL (Report location clearly and in accordance with any State requirements.)*
 At surface 990' FSL & 1980' FWL of Section
 At proposed prod. zone Same (SE 1/4 SW 1/4)
 (Unit N)

14. DISTANCE IN MILES AND DIRECTION FROM NEAREST TOWN OR POST OFFICE*
 28 air miles west-northwest of Jal, New Mexico

15. DISTANCE FROM PROPOSED* LOCATION TO NEAREST PROPERTY OR LEASE LINE, FT. (Also to nearest drlg. unit line, if any) 990'

16. NO. OF ACRES IN LEASE 1720

17. NO. OF ACRES ASSIGNED TO THIS WELL 40

18. DISTANCE FROM PROPOSED LOCATION* TO NEAREST WELL, DRILLING, COMPLETED, OR APPLIED FOR, ON THIS LEASE, FT. 990'

19. PROPOSED DEPTH 5000' Delaware

20. ROTARY OR CABLE TOOLS Rotary

21. ELEVATIONS (Show whether DF, RT, GR, etc.) 3534' G.L.

22. APPROX. DATE WORK WILL START* February 29, 1984

5. LEASE DESIGNATION AND SERIAL NO.
 NM-16353

6. IF INDIAN, ALLOTTEE OR TRIBE NAME
 --

7. UNIT AGREEMENT NAME
 --

8. FARM OR LEASE NAME
 EXXON "A" FEDERAL

9. WELL NO.
 4

10. FIELD AND POOL, OR WILDCAT
 Double X Delaware

11. SEC., T., R., M., OR BLK. AND SURVEY OR AREA
 Sec. 27-24S-32E

12. COUNTY OR PARISH
 Lea

13. STATE
 NM

23. PROPOSED CASING AND CEMENTING PROGRAM

SIZE OF HOLE	SIZE OF CASING	WEIGHT PER FOOT	SETTING DEPTH	QUANTITY OF CEMENT
11"	8 5/8"	24#	1050'	Sufficient to circulate
7 7/8"	5 1/2"	14#	TD	150 sacks

Pay zone will be selectively perforated and stimulated as needed for optimum production.

- Attached are: 1. Well Location & Acreage Dedication Plat
 2. Supplemental Drilling Data
 3. Surface Use Plan

RECEIVED
 FEB 27 1984
 OIL & GAS
 DOBSON, NEW MEXICO

IN ABOVE SPACE DESCRIBE PROPOSED PROGRAM: If proposal is to deepen or plug back, give data on present productive zone and proposed new productive zone. If proposal is to drill or deepen directionally, give pertinent data on subsurface locations and measured and true vertical depths. Give blowout preventer program, if any.

24. SIGNED James A. Knau f TITLE Agent DATE February 15, 1984
 (This space for Federal or State office use)

PERMIT NO. _____ APPROVAL DATE District Manager
 APPROVED BY 'Orig. Sgd.' Earl R. Cunningham TITLE _____
 CONDITIONS OF APPROVAL, IF ANY:

MAR 26 1984
 APPROVAL SUBJECT TO
 GENERAL REQUIREMENTS AND
 SPECIAL STIPULATIONS
 ATTACHED

RECEIVED
MAR 27 1984
O.C.D.
HOBBS OFFICE

RECEIVED
MAR 27 1984
O.C.D.
HOBBS OFFICE

RECEIVED
MAR 27 1984
O.C.D.
HOBBS OFFICE

NEW MEXICO OIL CONSERVATION COMMISSION
WELL LOCATION AND ACREAGE DEDICATION PLAT

Form O-112
Supersedes O-124
Effective 10/43

All distances must be from the outer boundaries of the Section

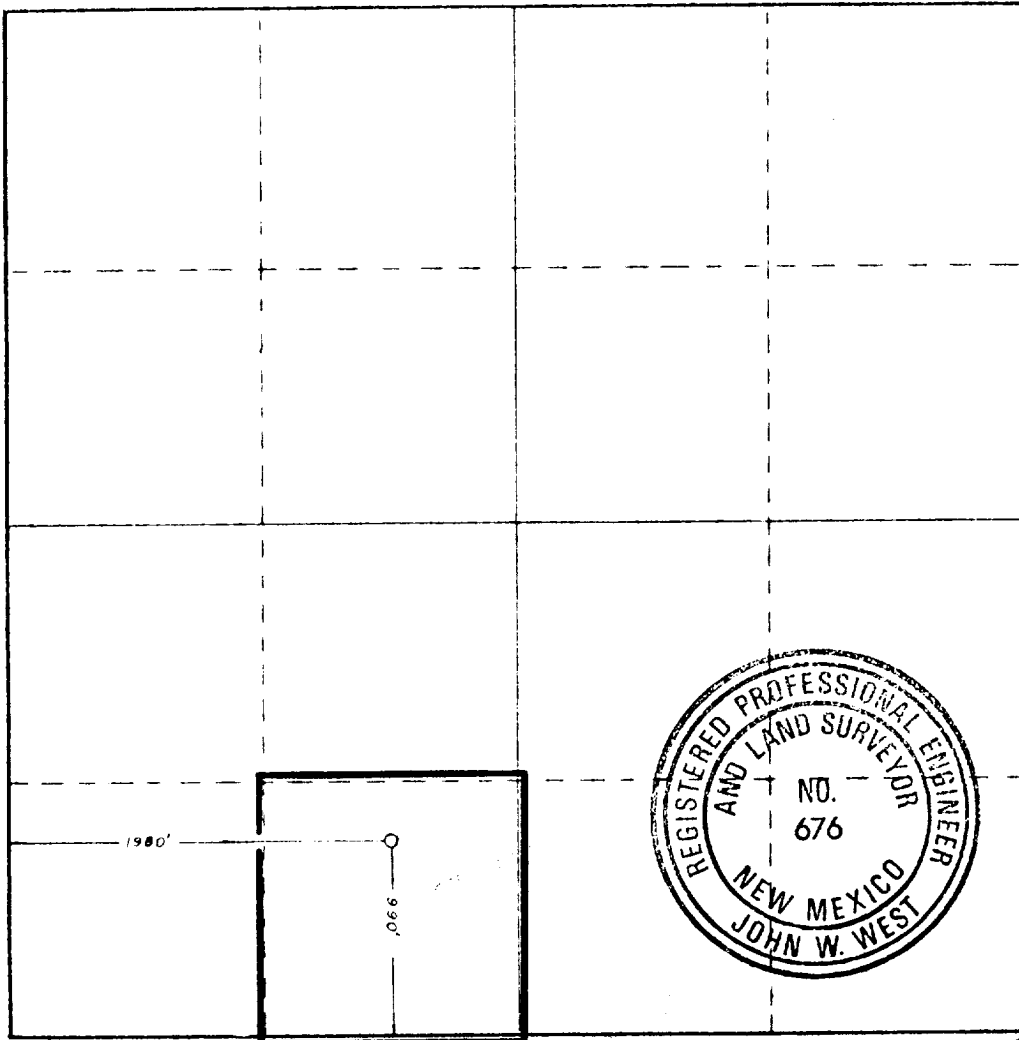
Operator JUBILEE ENERGY CORP.		Lease EXXON "A" FEDERAL		Well No. 4	
Unit Letter N	Section 27	Township 24S	Range 32E	County LEA	
Actual Footage Location of Well:					
990 feet from the SOUTH line and		1980 feet from the WEST line			
Ground Level Elev. 3533.8	Producing Formation Delaware	Pool Double X Delaware	Dedicated Acreage .40		

1. Outline the acreage dedicated to the subject well by colored pencil or hachure marks on the plat below.
2. If more than one lease is dedicated to the well, outline each and identify the ownership thereof (both as to working interest and royalty).
3. If more than one lease of different ownership is dedicated to the well, have the interests of all owners been consolidated by communitization, unitization, force-pooling, etc?

Yes No If answer is "yes," type of consolidation _____

If answer is "no," list the owners and tract descriptions which have actually been consolidated. (Use reverse side of this form if necessary.) _____

No allowable will be assigned to the well until all interests have been consolidated (by communitization, unitization, forced-pooling, or otherwise) or until a non-standard unit, eliminating such interests, has been approved by the Commission.



CERTIFICATION

I hereby certify that the information contained herein is true and complete to the best of my knowledge and belief.

James A. Knauf
Name

James A. Knauf

Position
Agent

Company
JUBILEE ENERGY CORPORATION

Date
February 15, 1984

I hereby certify that the well location shown on this plat was plotted from field notes of actual surveys made by me or under my supervision, and that the same is true and correct to the best of my knowledge and belief.

Date Surveyed
2/1/84

Registered Professional Engineer and/or Land Surveyor

John W. West

Certificate No. JOHN W. WEST, 676
RONALD J. EIDSON, 3039

SUPPLEMENTAL DRILLING DATA

JUBILEE ENERGY CORPORATION
WELL #4 EXXON "A" FEDERAL
990' FSL & 1980' FWL SEC. 27-24S-32E
LEA COUNTY, NEW MEXICO

1. SURFACE FORMATION: Alluvium soils of Quaternary Age. (Elevation 3534')

2. ESTIMATED TOPS OF GEOLOGIC MARKERS:

Anhydrite	980'	Delaware Sand	4835'
Salado Salt	1260'	Ford Shale	4935'
Base Lower Salt	4570'	Delaware Olds	4950'
Delaware Lime	4800'		

3. ANTICIPATED POROSITY ZONES:

Water: Above 350'
Oil: 4835' - 5000'

4. CASING DESIGN:

<u>Size</u>	<u>Interval</u>	<u>Weight</u>	<u>Grade</u>	<u>Joint</u>
8 5/8"	0 - 1050'	24#	J-55	STC
5 1/2"	0 - 5000'	14#	J-55	STC

5. PRESSURE CONTROL EQUIPMENT: Two Ram-Type Preventors (600 Series).
A sketch of BOP is attached.

6. CIRCULATING MEDIUM:

0 - 1050' Fresh water with gel or lime as needed for viscosity.

1050 - 5000' Brine conditioned as necessary for control of
viscosity and water loss.

7. AUXILIARY EQUIPMENT: Drill string safety valve.

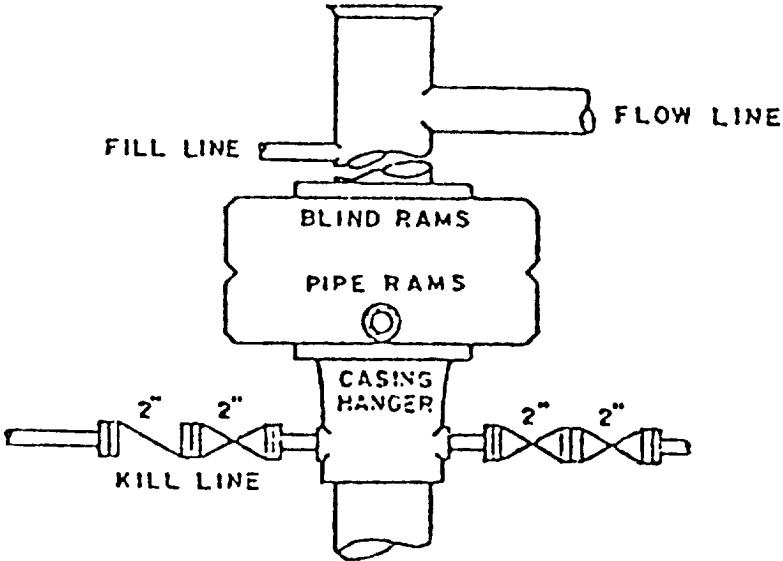
8. TESTING, LOGGING AND CORING PROGRAMS: No coring or DST's are planned.
Electric logs will include a Compensated Neutron Log with Gamma Ray.

9. ABNORMAL PRESSURES, TEMPERATURES OR GAS: None anticipated.

10. ANTICIPATED STARTING DATE: Road and pad construction: February 25, 1984.
Spud well: February 29, 1984. Duration of drilling, testing, and completion operations should be 15 to 40 days.

RECEIVED
MAR 27 1984
O.C.D.
HOBBS OFFICE

BLOWOUT PREVENTER SKETCH
Jubilee Energy Corporation
Well #4 Exxon "A" Federal
990' FSL & 1980' FWL Sec. 27-24S-32E



ELF

RECEIVED
MAR 27 1984
O.C. n
HOBBS OFFICE