

OIL CONSERVATION DIVISION

STATE OF NEW MEXICO
ENERGY AND MINERALS DEPARTMENTP. O. BOX 2088
SANTA FE, NEW MEXICO 87501Form C-102
Revised 10-1-78

All distances must be from the outer boundaries of the Section.

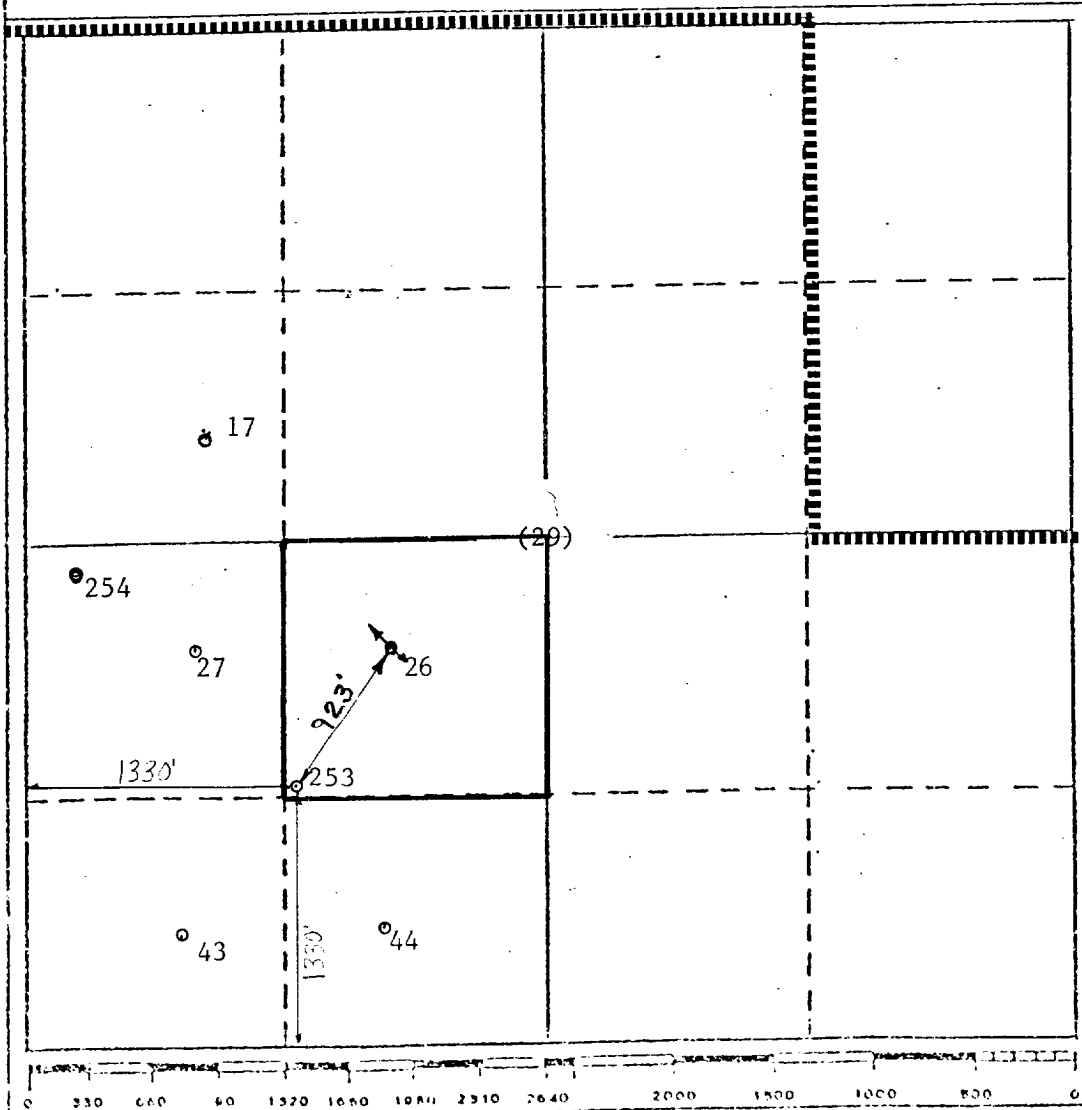
Operator Texaco Producing Inc.		Lease Myers Langlie Mattix Unit		Well No. 253
Unit Letter K	Section 29	Township 23-S	Range 37-E	County Lea
Actual Footage Location of Well:				
1330 feet from the South line and		1330 feet from the West line		
Ground Level Elev. 3316'	Producing Formation Seven Rivers & Queen	Pool Langlie Mattix	Dedicated Acreage: 40 Acres	

1. Outline the acreage dedicated to the subject well by colored pencil or hatchure marks on the plat below.
2. If more than one lease is dedicated to the well, outline each and identify the ownership thereof (both as to working interest and royalty).
3. If more than one lease of different ownership is dedicated to the well, have the interests of all owners been consolidated by communitization, unitization, force-pooling, etc?

☒ Yes ☐ No If answer is "yes," type of consolidation Unitization

If answer is "no," list the owners and tract descriptions which have actually been consolidated. (Use reverse side of this form if necessary.)

No allowable will be assigned to the well until all interests have been consolidated (by communitization, unitization, forced-pooling, or otherwise) or until a non-standard unit, eliminating such interests, has been approved by the Division.



CERTIFICATION

I hereby certify that the information contained herein is true and complete to the best of my knowledge and belief.

B. L. Eiland

Name

B. L. Eiland

Position

Division Surveyor

Company

Texaco Producing Inc.

Date

November 1, 1985

I hereby certify that the well location shown on this plat was plotted from field notes of actual surveys made by me or under my supervision, and that the same is true and correct to the best of my knowledge and belief.

Date Surveyed

October 3, 1985

Registered Professional Engineer
and Land Surveyor

B. L. Eiland
B. L. Eiland

Certificate No. 386