

All distances must be from the outer boundaries of the Section.

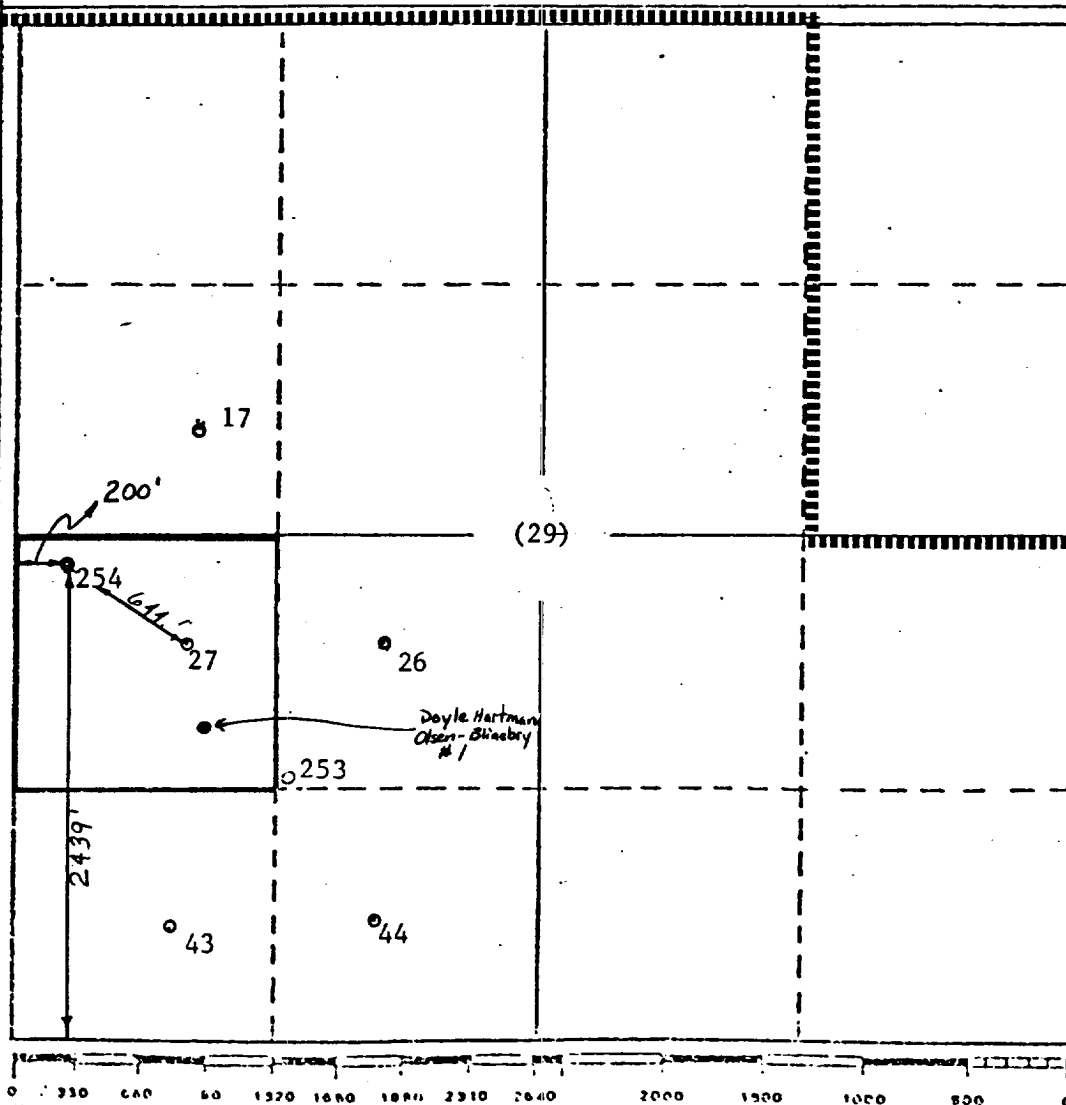
Operator <b>Texaco Producing Inc.</b>			Lease <b>Myers Langlie Mattix Unit</b>		Well No. <b>254</b>
Unit Letter <b>L</b>	Section <b>29</b>	Township <b>23-S</b>	Range <b>37-E</b>	County <b>Lea</b>	
Actual Footage Location of Well: <b>2439</b> feet from the <b>South</b> line and <b>200</b> feet from the <b>West</b> line					
Ground Level Elev. <b>3313'</b>	Producing Formation <b>Seven Rivers &amp; Queen</b>		Pool <b>Langlie Mattix</b>		Dedicated Acreage: <b>40</b> Acres

1. Outline the acreage dedicated to the subject well by colored pencil or hachure marks on the plat below.
2. If more than one lease is dedicated to the well, outline each and identify the ownership thereof (both as to working interest and royalty).
3. If more than one lease of different ownership is dedicated to the well, have the interests of all owners been consolidated by communitization, unitization, force-pooling, etc?

☒ Yes ☐ No If answer is "yes," type of consolidation Unitization

If answer is "no," list the owners and tract descriptions which have actually been consolidated. (Use reverse side of this form if necessary.)

No allowable will be assigned to the well until all interests have been consolidated (by communitization, unitization, forced-pooling, or otherwise) or until a non-standard unit, eliminating such interests, has been approved by the Division.



CERTIFICATION

I hereby certify that the information contained herein is true and complete to the best of my knowledge and belief.

*B. L. Eiland*

Name

B. L. Eiland

Position

Division Surveyor

Company

Texaco Producing Inc.

Date

February 18, 1986

I hereby certify that the well location shown on this plat was plotted from field notes of actual surveys made by me or under my supervision, and that the same is true and correct to the best of my knowledge and belief.

Witnessed

February 18, 1986

Registered Professional Engineer

State of New Mexico

14388

B. L. Eiland

Certified by L. EILAND

14386