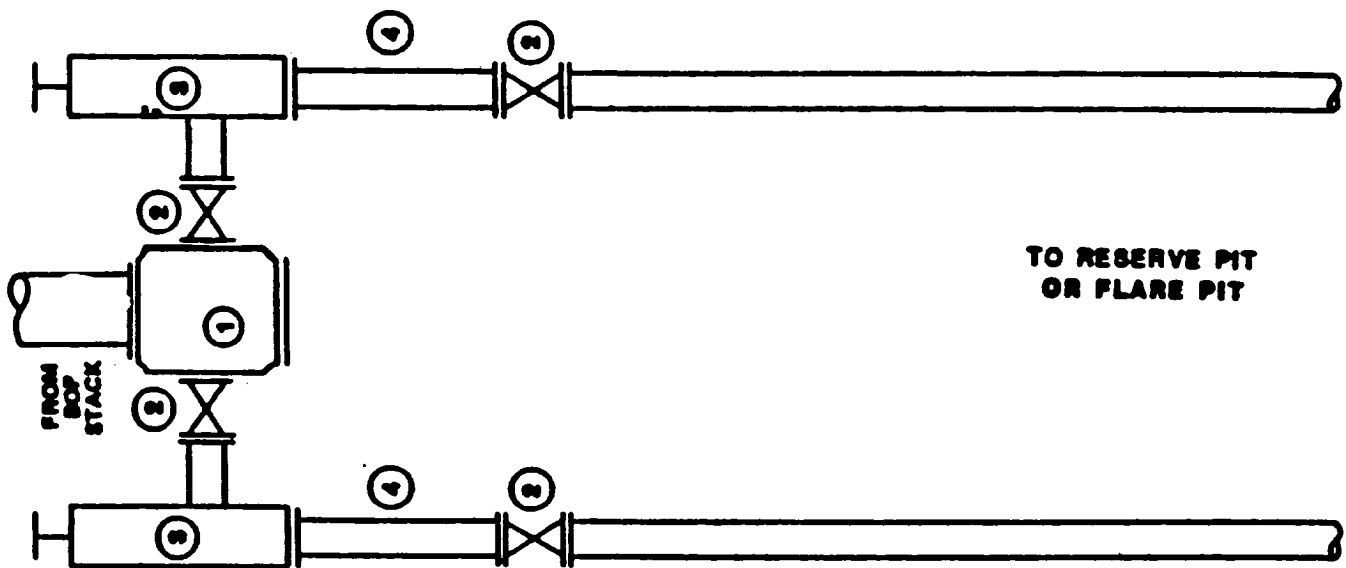


## TYPE- 2 CHOKE MANIFOLD



### COMPONENT SPECIFICATIONS Type 2 CHOKE Manifold

1. Flanged or studded cross - 3" x 3" x 2" x 2" minimum nominal diameter with blind flange and equipped with needle valve pressure gauge.
2. Flanged plug or gate valve -- 2" minimum nominal diameter -- valve to have same working pressure rating as choke.
3. Flanged manually - adjustable choke equipped with tungsten carbide stems and seats and at least 3/4" orifice opening.
4. Flanged spacer spool - 2" minimum nominal diameter and approximately 18" length.