

**MEXICO OIL CONSERVATION COMMISS**  
**WELL LOCATION AND ACREAGE DEDICATION PLAT**

Form C-102  
 Supersedes C-128  
 Effective 1-1-65

All distances must be from the outer boundaries of the Section.

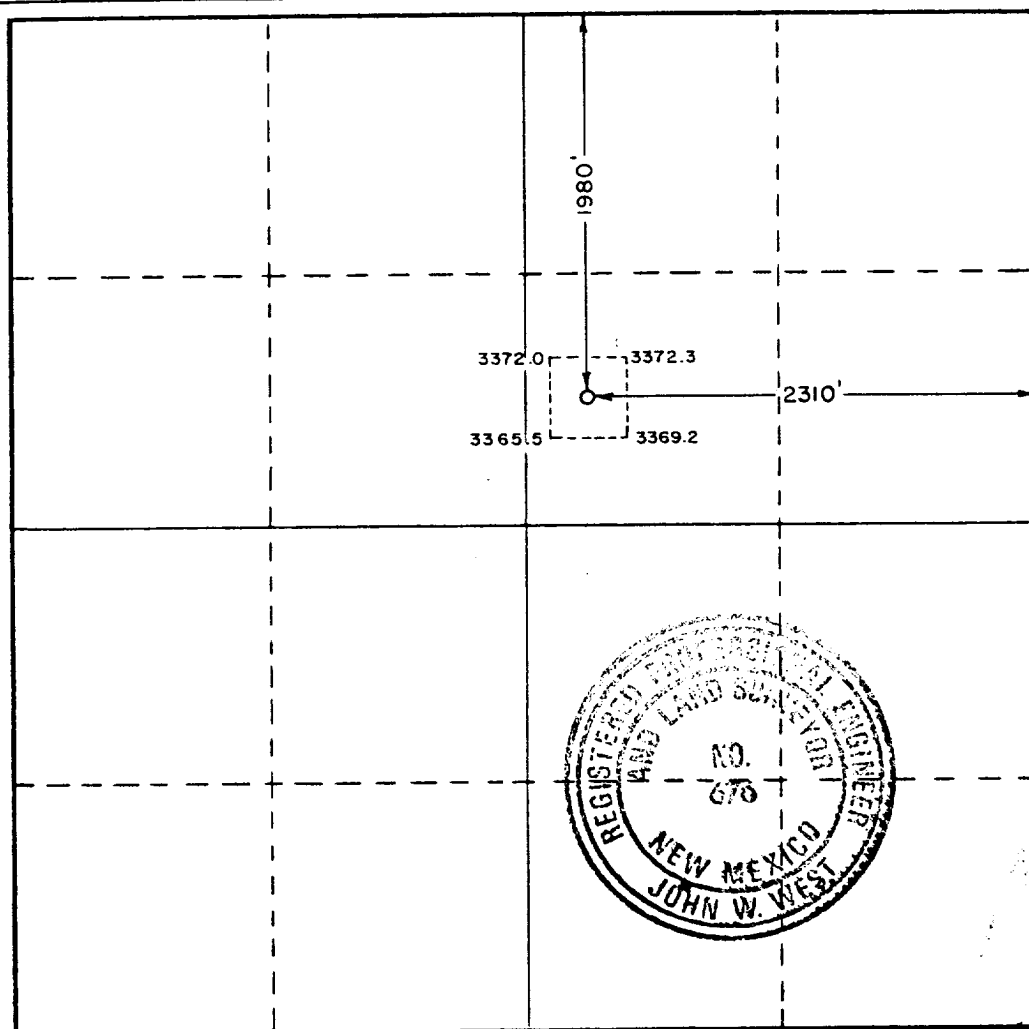
|  |                                      |                                |  |  |                      |
|--|--------------------------------------|--------------------------------|--|--|----------------------|
| Operator<br><b>ENRON OIL &amp; GAS COMPANY</b>   |                                      |                                | Lease<br><b>C INTA ROJA 17 FEDERAL COM</b> |  | Well No.<br><b>1</b> |
| Unit Letter<br><b>G</b>  | Section<br><b>17</b>                 | Township<br><b>24 SOUTH</b>    | Range<br><b>35 EAST</b>                    | County<br><b>LEA</b>                   |                      |
| Actual Footage Location of Well:<br><b>1980</b> feet from the <b>NORTH</b> line and <b>2310</b> feet from the <b>EAST</b> line |                                      |                                |  |  |                      |
| Ground Level Elev.<br><b>3369.2</b>  | Producing Formation<br><b>Morrow</b> | Pool<br><b>Und. Cinta Roja</b> |  | Dedicated Acreage:<br><b>640</b> Acres |                      |

1. Outline the acreage dedicated to the subject well by colored pencil or hachure marks on the plat below.
2. If more than one lease is dedicated to the well, outline each and identify the ownership thereof (both as to working interest and royalty).
3. If more than one lease of different ownership is dedicated to the well, have the interests of all owners been consolidated by communitization, unitization, force-pooling, etc?

☒ Yes    ☐ No    If answer is "yes," type of consolidation Communitization

If answer is "no," list the owners and tract descriptions which have actually been consolidated. (Use reverse side of this form if necessary.) \_\_\_\_\_

No allowable will be assigned to the well until all interests have been consolidated (by communitization, unitization, forced-pooling, or otherwise) or until a non-standard unit, eliminating such interests, has been approved by the Commission.



**CERTIFICATION**

I hereby certify that the information contained herein is true and complete to the best of my knowledge and belief.

*Betty Gildon*

Name  
 Betty Gildon

Position  
 Regulatory Analyst

Company  
 Enron Oil & Gas Company

Date  
 August 25, 1987

I hereby certify that the well location shown on this plat was plotted from field notes of actual surveys made by me or under my supervision, and that the same is true and correct to the best of my knowledge and belief.

Date Surveyed  
 AUGUST 20, 1987

Registered Professional Engineer  
 and/or Land Surveyor

*Ronald J. Eidson*

Certificate No. **JOHN W. WEST, 676**  
**RONALD J. EIDSON, 3239**