

NEW MEXICO OIL CONSERVATION COMMISSION
WELL LOCATION AND ACREAGE DEDICATION PLAT

Form C-102
Supersedes C-128
Effective 1-1-65

All distances must be from the outer boundaries of the Section.

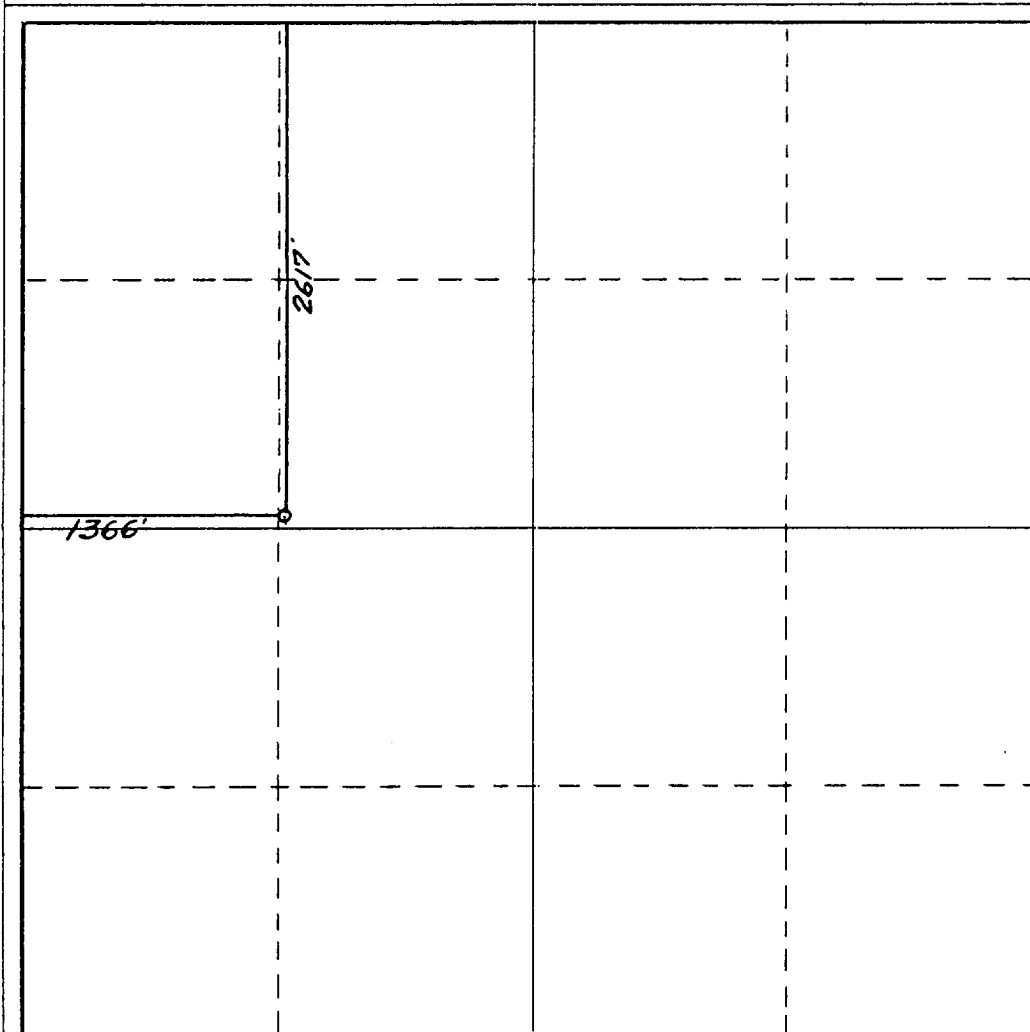
Operator SIRGO-COLLIER, INC.			Lease 5 Kelly Penrose B Unit		Well No. 64
Unit Letter F	Section 5	Township 23 South	Range 37 East	County Lea County, N.M.	
Actual Footage Location of Well: 2617 feet from the North line and 1366 feet from the West line					
Ground Level Elev. 3353.	Producing Formation Queen	Pool Langlie Mattix		Dedicated Acreage: 40 Acres	

1. Outline the acreage dedicated to the subject well by colored pencil or hachure marks on the plat below.
2. If more than one lease is dedicated to the well, outline each and identify the ownership thereof (both as to working interest and royalty).
3. If more than one lease of different ownership is dedicated to the well, have the interests of all owners been consolidated by communitization, unitization, force-pooling, etc?

☒ Yes ☐ No If answer is "yes," type of consolidation Unitization, R-

If answer is "no," list the owners and tract descriptions which have actually been consolidated. (Use reverse side of this form if necessary.)

No allowable will be assigned to the well until all interests have been consolidated (by communitization, unitization, forced-pooling, or otherwise) or until a non-standard unit, eliminating such interests, has been approved by the Commission.



CERTIFICATION

I hereby certify that the information contained herein is true and complete to the best of my knowledge and belief.

Amy L. Whitley

Name

Amy L. Whitley

Position

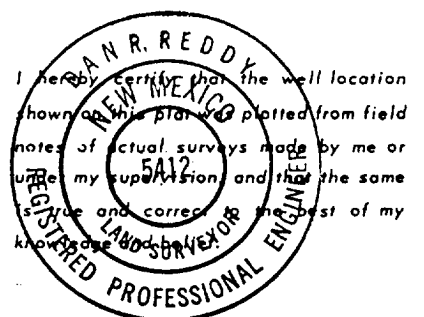
Agent

Company

Sirgo-Collier, Inc.

Date

February 18, 1988



Date Surveyed

January 30, 1988

Registered Professional Engineer
and/or Land Surveyor

Alan R. Reddy

Certificate No.

NM PE&LS NO. 5412

