

STATE OF NEW MEXICO
ENERGY AND MINERALS DEPARTMENT

OIL CONSERVATION DIVISION

P. O. BOX 2088
SANTA FE, NEW MEXICO 87501

30-025-30252
Form C-101
Revised 10-1-78

NO. OF COPIES RECEIVED	
DISTRIBUTION	
SANTA FE	
FILE	
U.S.G.S.	
LAND OFFICE	
OPERATOR	

5A. Indicate Type of Lease
STATE ☒ FEE ☐

5. State Oil & Gas Lease No.
B-9312

APPLICATION FOR PERMIT TO DRILL, DEEPEN, OR PLUG BACK

1a. Type of Work

DRILL ☒

DEEPEN ☐

PLUG BACK ☐

b. Type of Well

OIL WELL ☒

GAS WELL ☐

OTHER

SINGLE ZONE ☒

MULTIPLE ZONE ☐

2. Name of Operator

Sirgo-Collier, Inc.

3. Address of Operator

P. O. Box 3531, Midland, Texas 79702

4. Location of Well

UNIT LETTER G LOCATED 1470 FEET FROM THE North LINE

AND 1520 FEET FROM THE East LINE OF SEC. 5 TWP. 25S RGE. 38E NMPM

7. Unit Agreement Name
West Dollarhide Queen Sand Unit

8. Farm or Lease Name

9. Well No.

119

10. Field and Pool, or Wildcat

Dollarhide Queen

12. County

Lea

11. Elevations (Show whether DF, RT, etc.)

3162' GR 3173.5' KB

21A. Kind & Status Plug. Bond

Cash Statewide

19. Proposed Depth

4000

19A. Formation

Queen

20. Rotary or C.T.

Rotary

22. Approx. Date Work will start

March 3, 1988

23.

PROPOSED CASING AND CEMENT PROGRAM

SIZE OF HOLE	SIZE OF CASING	WEIGHT PER FOOT	SETTING DEPTH	SACKS OF CEMENT	EST. TOP
12-1/4"	8-5/8"	24#	420'	250	Surface
7-7/8"	5-1/2"	15.5 & 17#	4000'	1200	Surface

The Queen zone will be selectively perforated and stimulated as needed for optimum production.

Texaco Producing, Inc. operates the West Dollarhide Drinkard Unit #83, also located in this quarter quarter section.

ABOVE SPACE DESCRIBE PROPOSED PROGRAM; IF PROPOSAL IS TO DEEPEN OR PLUG BACK, GIVE DATA ON PRESENT PRODUCTIVE ZONE AND PROPOSED NEW PRODUCTION ZONE. GIVE BLOWOUT PREVENTER PROGRAM, IF ANY.

I hereby certify that the information above is true and complete to the best of my knowledge and belief.

Signed Army L. Whitley Title Agent Date February 23, 1988

(This space for State Use)

ORIGINAL SIGNED BY JERRY SEXTON

APPROVED BY DISTRICT 1 SUPERVISOR TITLE _____ DATE FEB 25 1988

CONDITIONS OF APPROVAL, IF ANY:

Permit Expires 6 Months From Approval
Date Unless Drilling Underway.

782-2469

NE MEXICO OIL CONSERVATION COMMISSION
WELL LOCATION AND ACREAGE DEDICATION PLAT

Form C-102
Supersedes C-128
Effective 1-1-65

All distances must be from the outer boundaries of the Section.

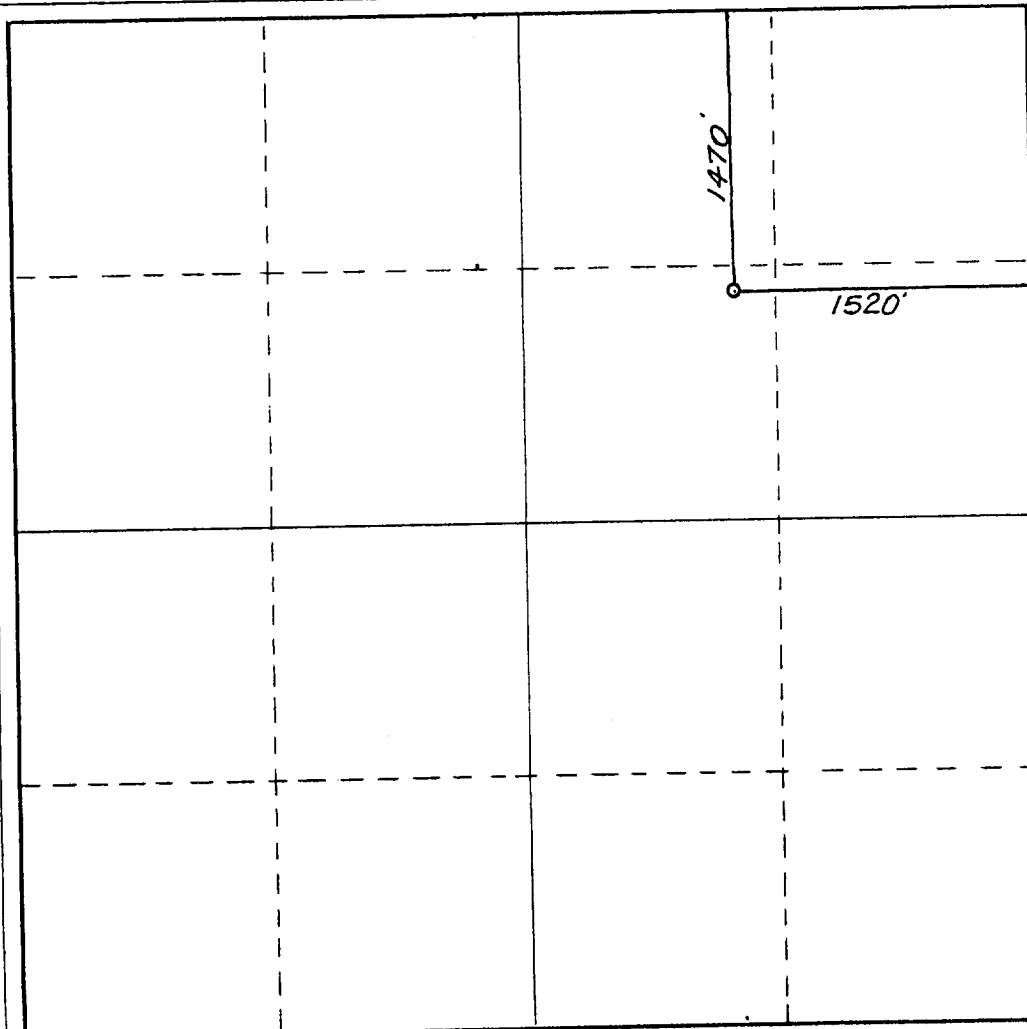
Operator SIRGO-COLLIER, INC.			Lease WDQSU (West Dollarhide Queen Sand Unit)		Well No. 119
Unit Letter G	Section 5	Township 25 South	Range 38 East	County Lea County, N.M.	
Actual Footage Location of Well: 1470 feet from the North line and 1520 feet from the East line					
Ground Level Elev. 3162.	Producing Formation Queen		Pool Dollarhide Queen		Dedicated Acreage: 40 Acres

1. Outline the acreage dedicated to the subject well by colored pencil or hachure marks on the plat below.
2. If more than one lease is dedicated to the well, outline each and identify the ownership thereof (both as to working interest and royalty).
3. If more than one lease of different ownership is dedicated to the well, have the interests of all owners been consolidated by communitization, unitization, force-pooling, etc?

☒ Yes ☐ No If answer is "yes," type of consolidation Unitization, R-2356

If answer is "no," list the owners and tract descriptions which have actually been consolidated. (Use reverse side of this form if necessary.) _____

No allowable will be assigned to the well until all interests have been consolidated (by communitization, unitization, forced-pooling, or otherwise) or until a non-standard unit, eliminating such interests, has been approved by the Commission.



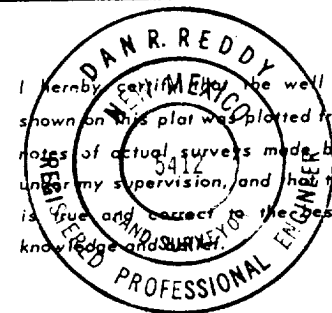
CERTIFICATION

I hereby certify that the information contained herein is true and complete to the best of my knowledge and belief.

Amy L. Whitley

Name
Amy L. Whitley
Position
Agent
Company
Sirgo-Collier, Inc.
Date
February 23, 1988

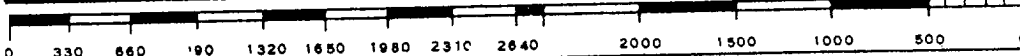
I hereby certify that the well location shown on this plat was plotted from field notes of actual surveys made by me or under my supervision, and that the same is true and correct to the best of my knowledge and belief.

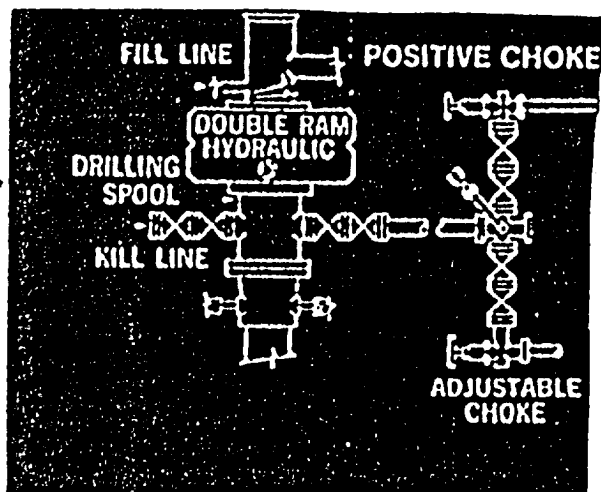


Date Surveyed
February 12, 1988
Registered Professional Engineer
and/or Land Surveyor

Dan R. Reddy
Certificate No.

NM PE&LS NO. 5412





RECEIVED
FEB 24 1988
OCCD
HOBBS OFFICE

~~REC'D 4-1-88~~
~~ELF~~

~~REC'D 6-28-88~~
~~ELF~~